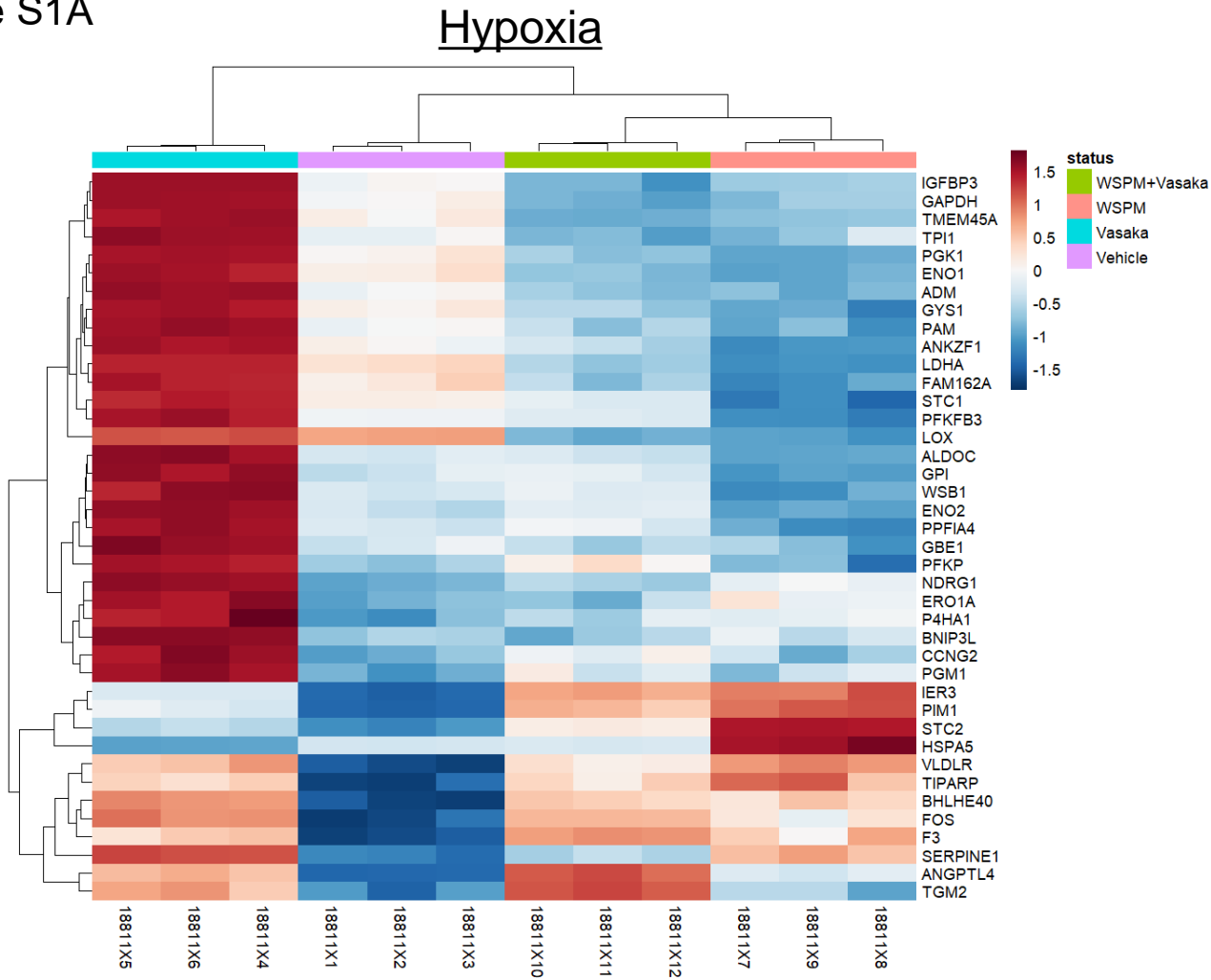
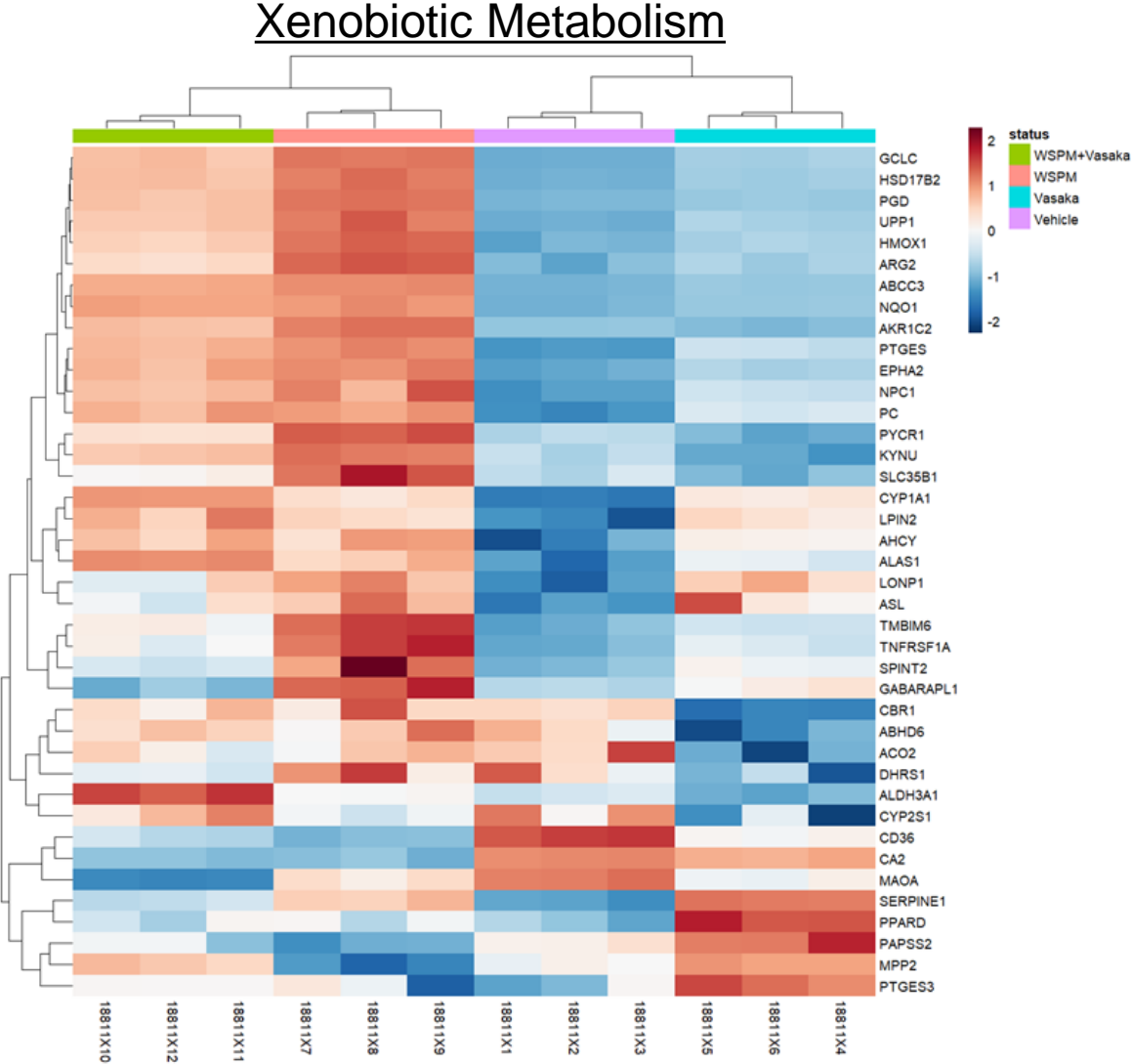


Supplemental Figure S1A

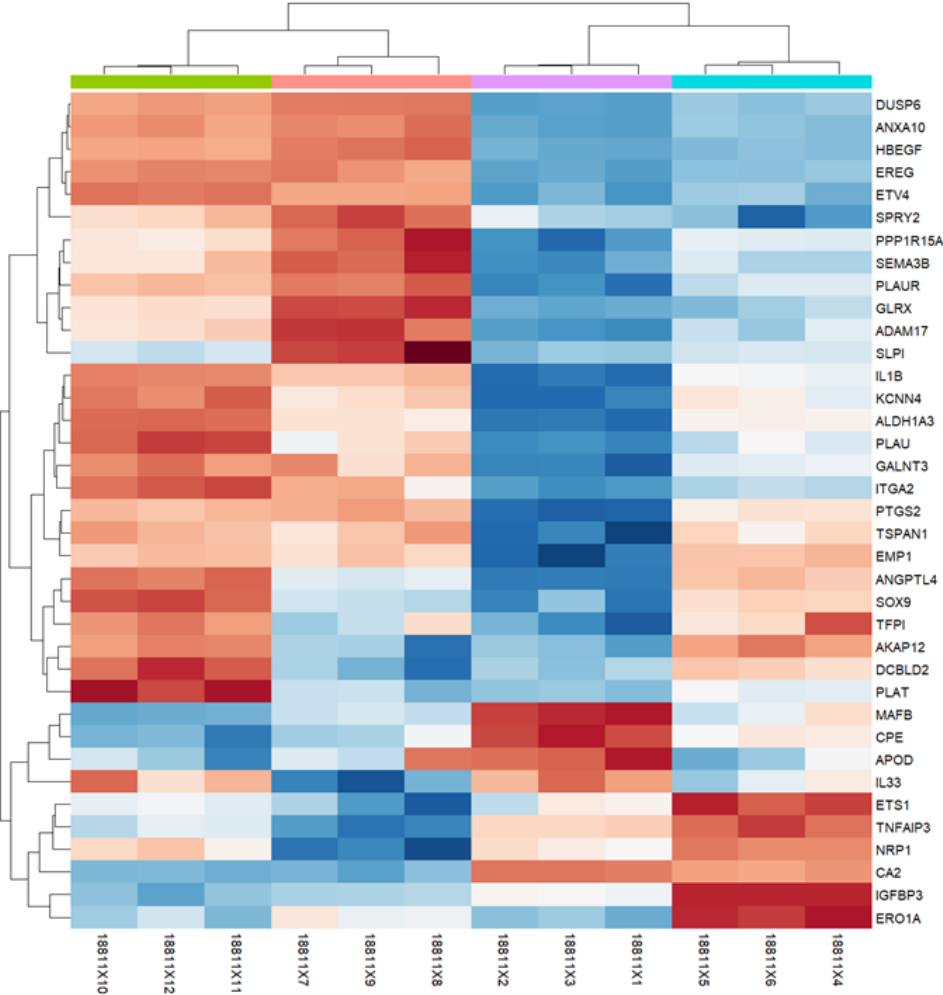


Supplemental Figure S1B

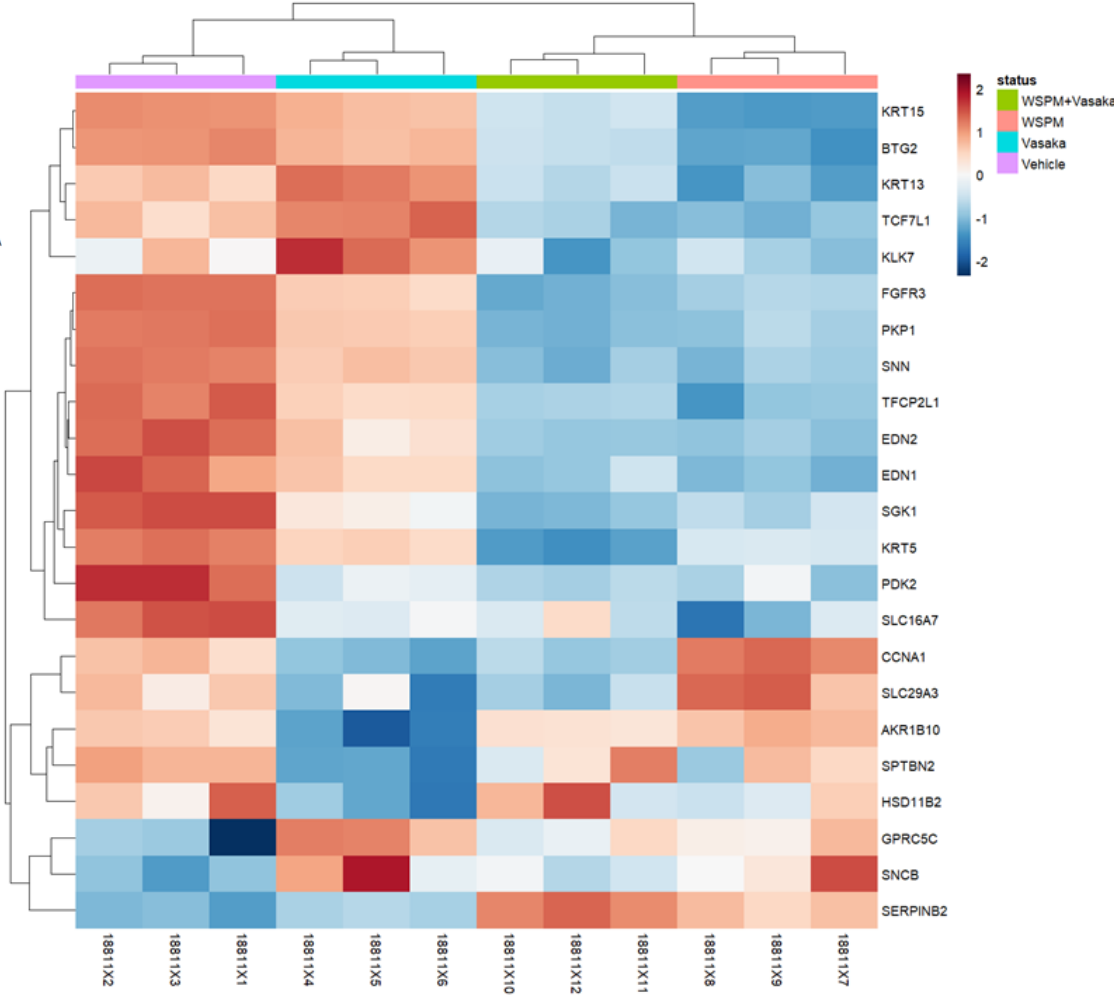


Supplemental Figure S1C

Kras Up

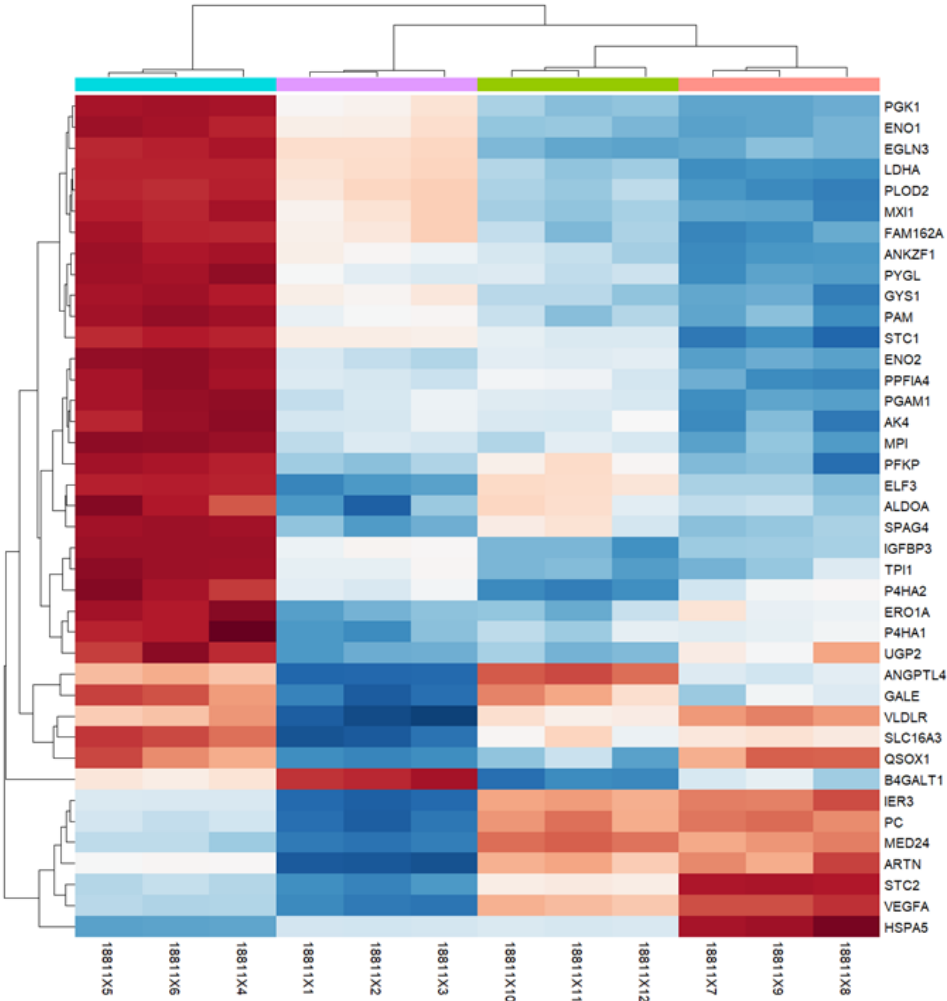


Kras Down

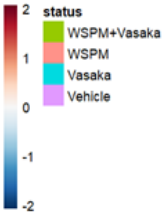
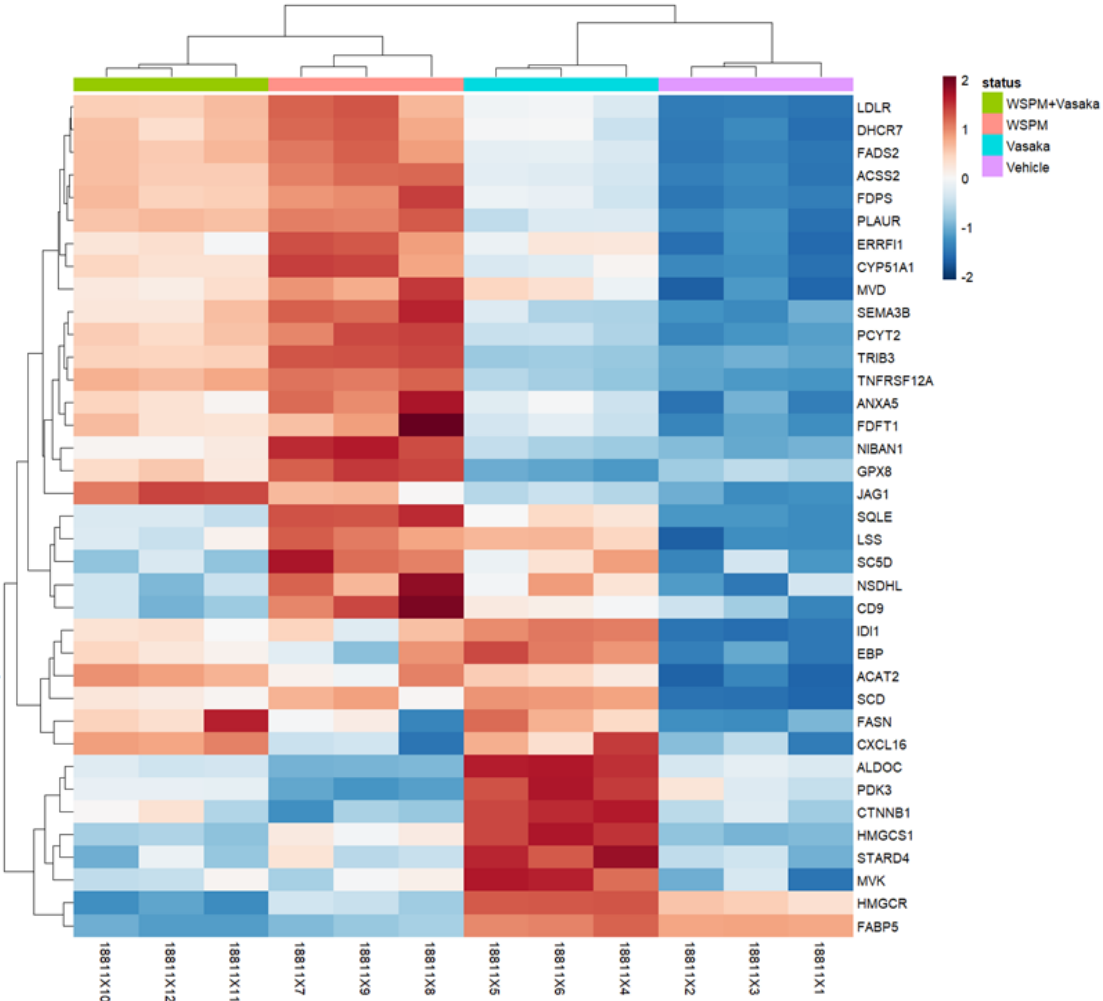


Supplemental Figure S1D

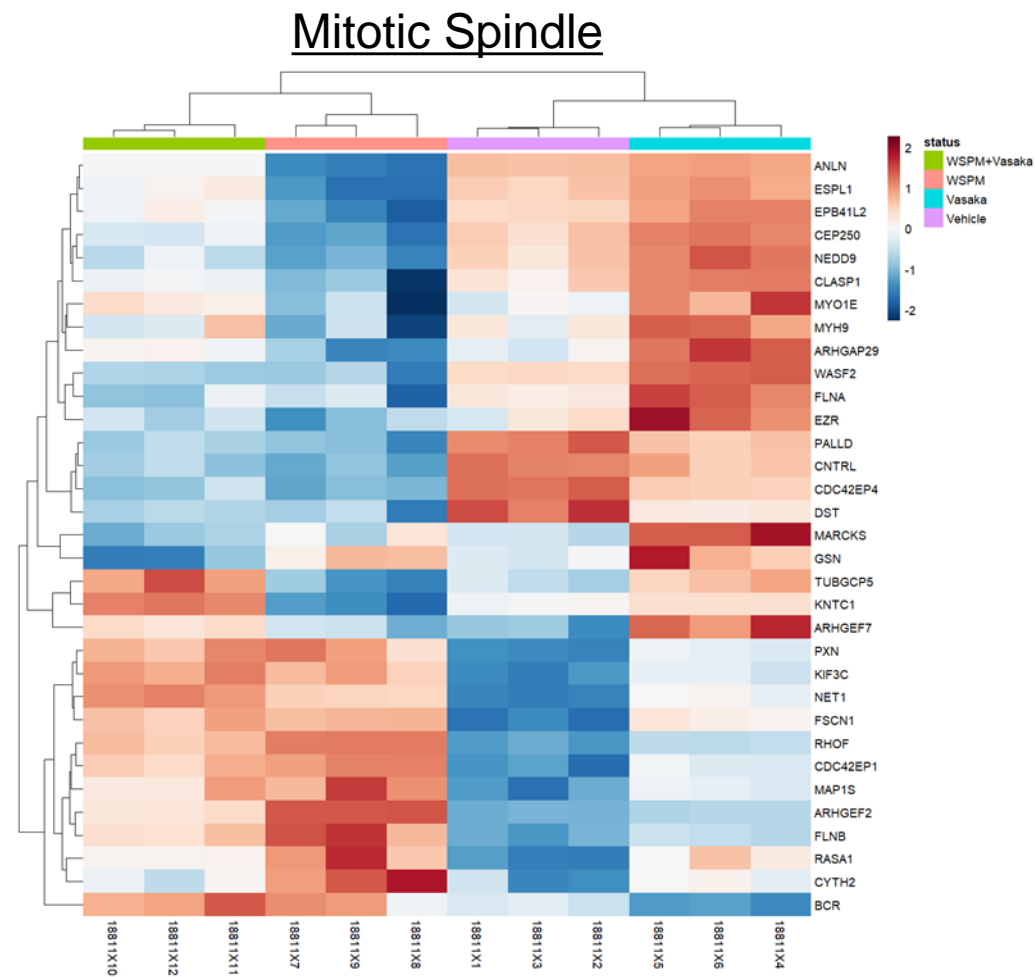
Glycolysis



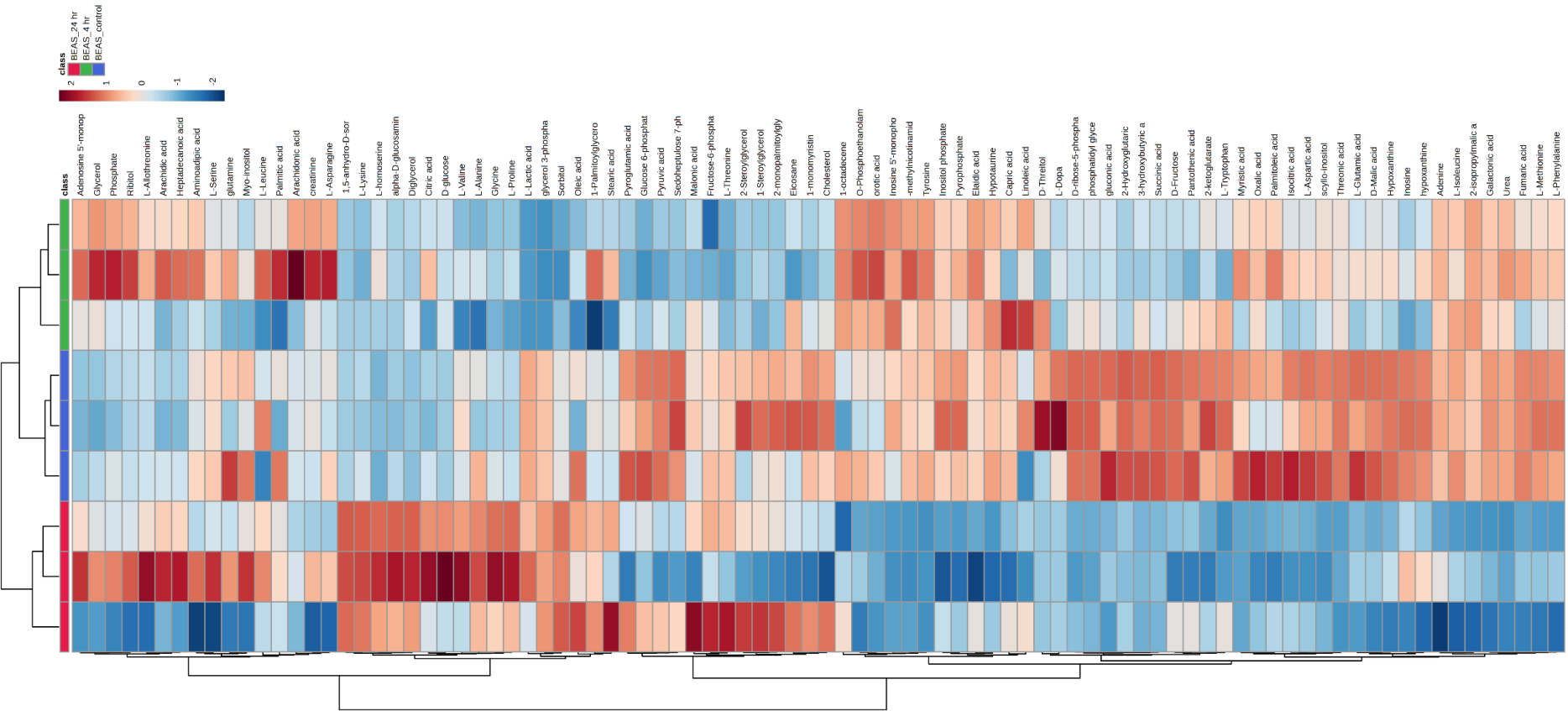
Cholesterol Homeostasis



Supplemental Figure S1E

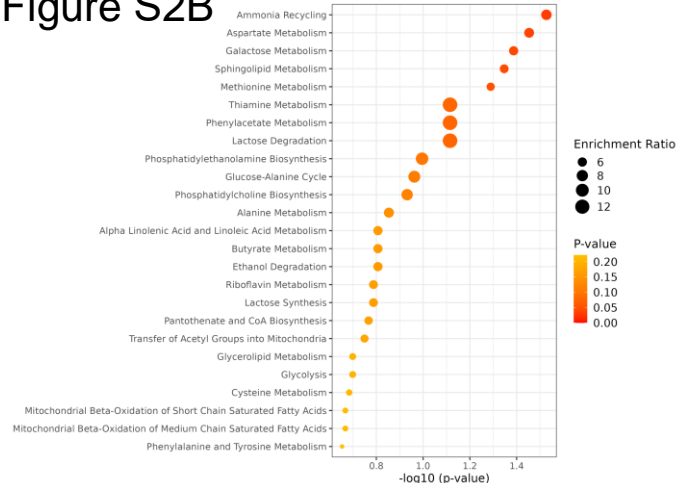


Supplemental Figure S2A

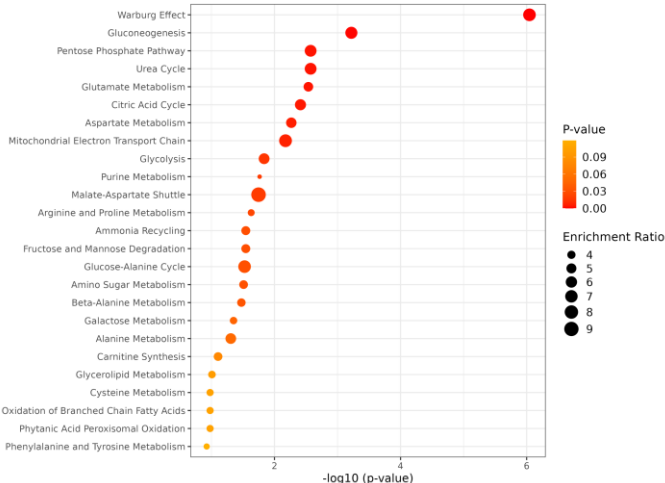


Supplemental
Figure S2B

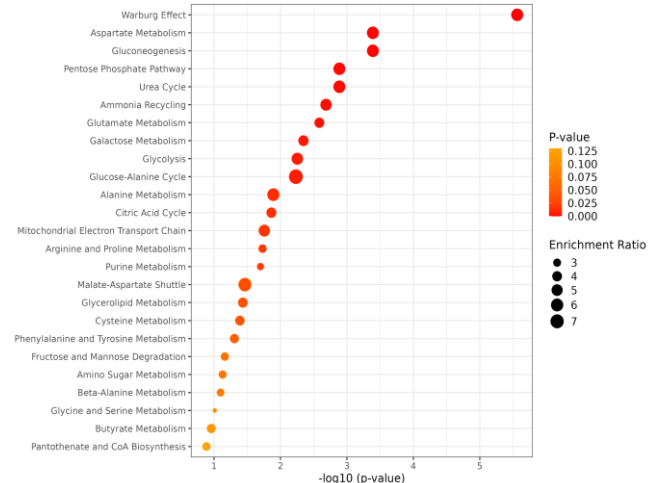
4h WSPM>Control
Overview of Enriched Metabolite Sets (Top 25)



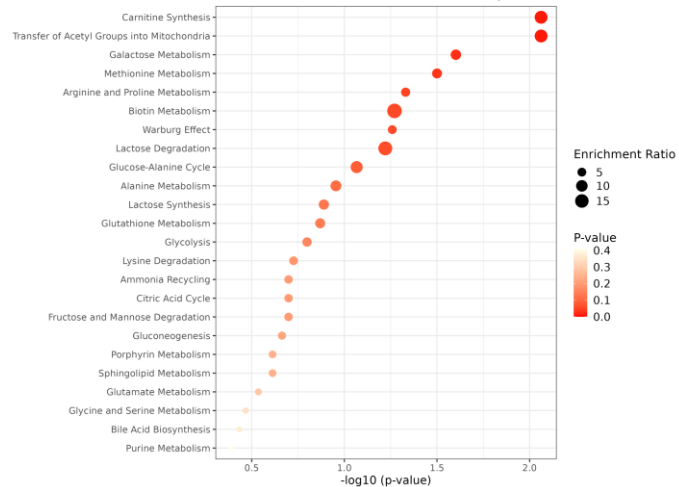
4h WSPM<Control
Overview of Enriched Metabolite Sets (Top 25)



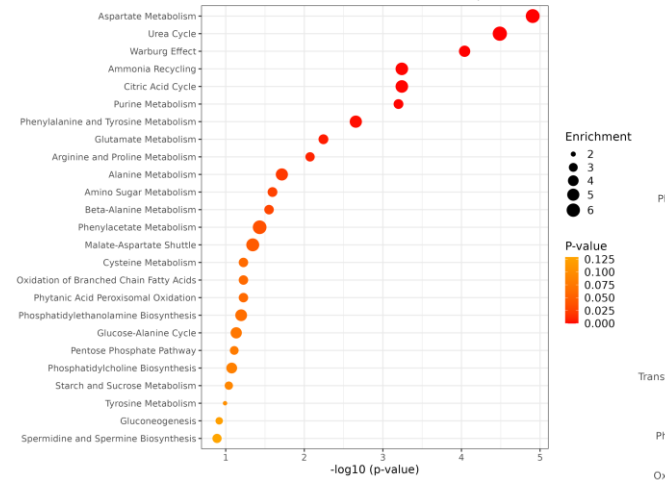
4h WSPM >1.25x
Overview of Enriched Metabolite Sets (Top 25)



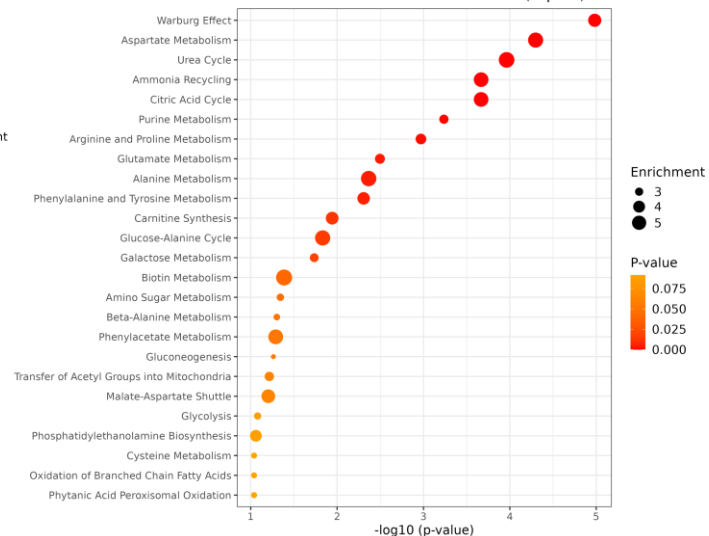
24h WSPM>Control
Overview of Enriched Metabolite Sets (Top 25)



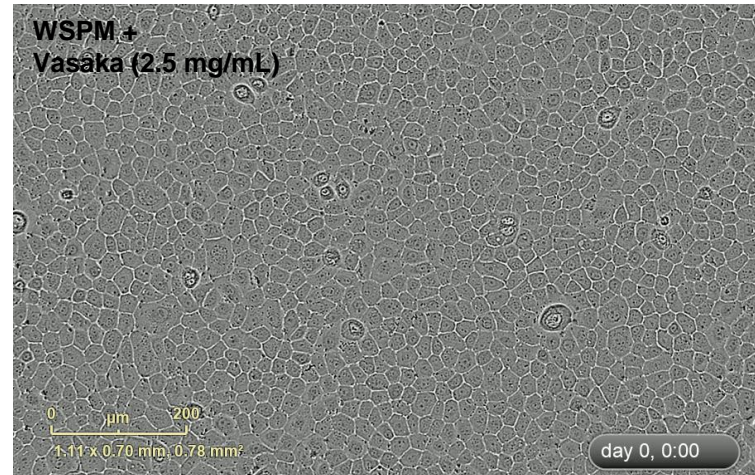
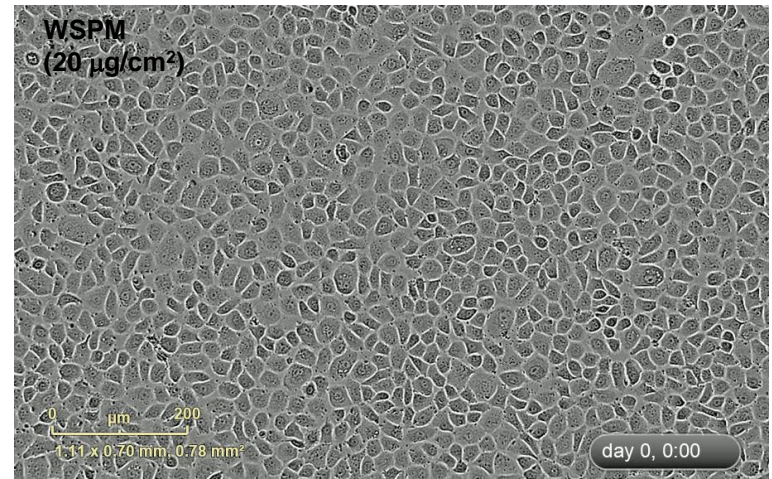
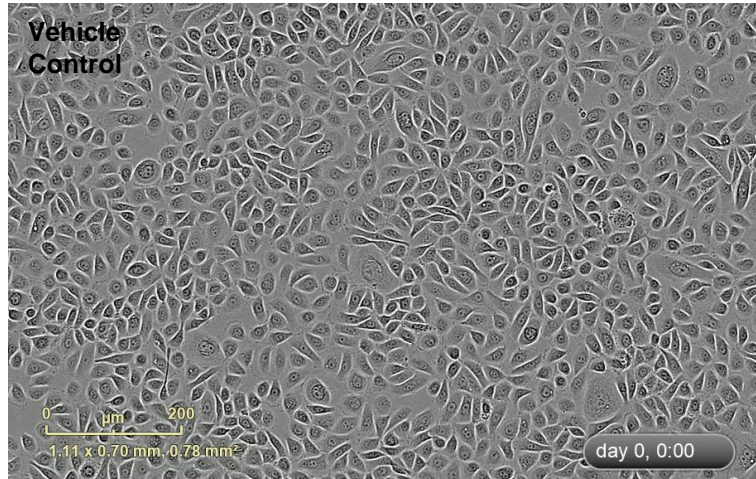
24h WSPM<Control
Overview of Enriched Metabolite Sets (Top 25)



24h WSPM >1.25x
Overview of Enriched Metabolite Sets (Top 25)

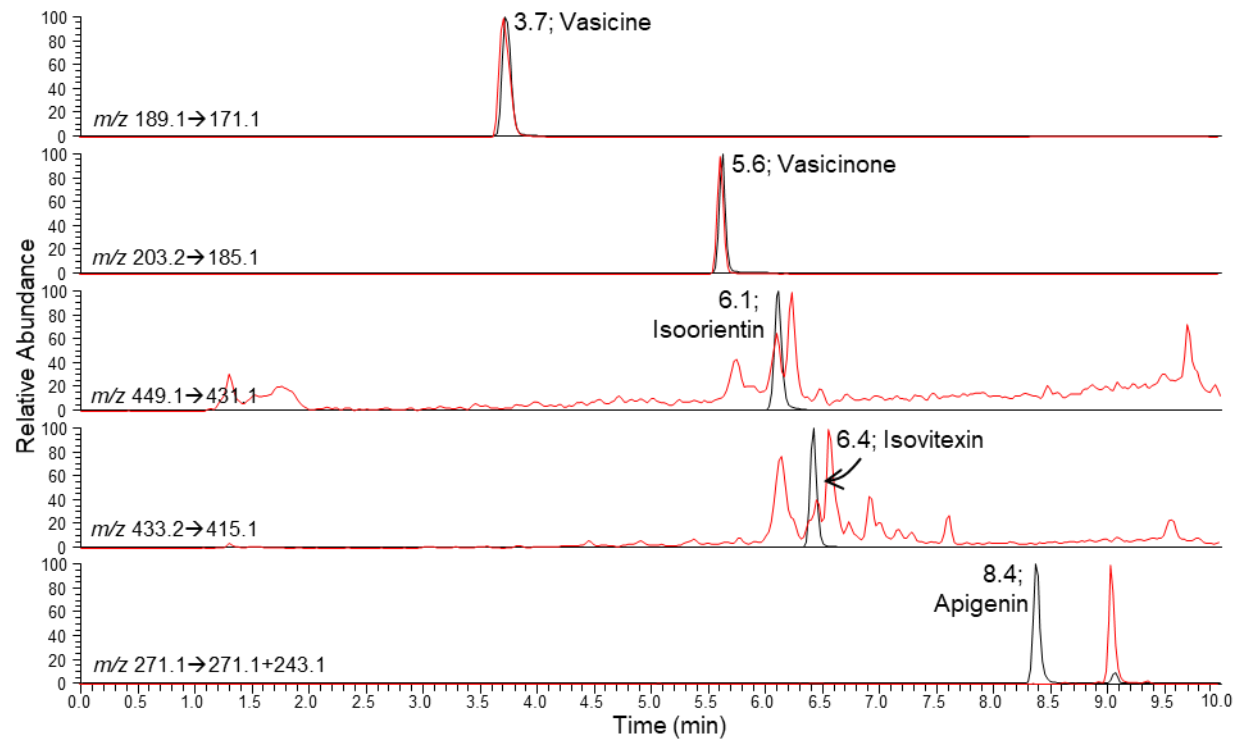


Supplemental Figure S3 (Movies)



Supplemental Figure S4A

Vasaka tea vs. Standard mix



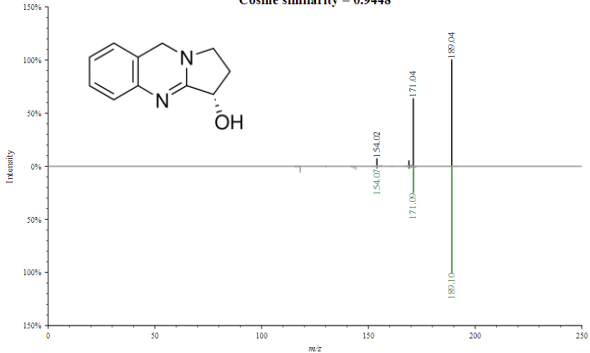
Supplemental Figure S4B

Vasicine (peganine) in Vasaka

Top: mzspec:GNPS:TASK-70ee48d645ee477d979dbcf5b7bd8eb6-spec/spec-00003.mzML:scan:1678
Precursor m/z : 189.07 Charge: 0

Bottom: mzspec:GNPS:GNPS-LIBRARY:accession:CCMSLIB00005741884
Precursor m/z : 189.10 Charge: 1

Cosine similarity = 0.9448

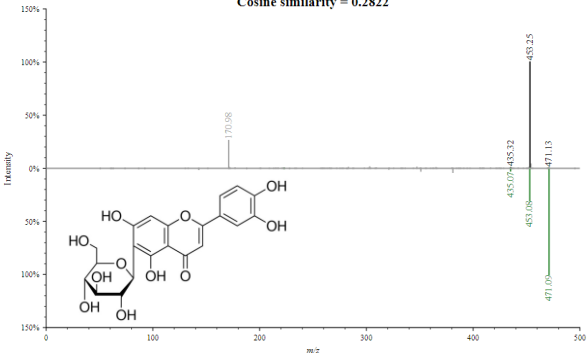


Isoorientin (Homoorientin; Luteolin 6-C-glucoside) in Vasaka

Top: mzspec:GNPS:TASK-70ee48d645ee477d979dbcf5b7bd8eb6-spec/spec-00018.mzML:scan:8604
Precursor m/z : 470.34 Charge: 0

Bottom: mzspec:GNPS:GNPS-LIBRARY:accession:CCMSLIB00006706566
Precursor m/z : 471.09 Charge: 1

Cosine similarity = 0.2822

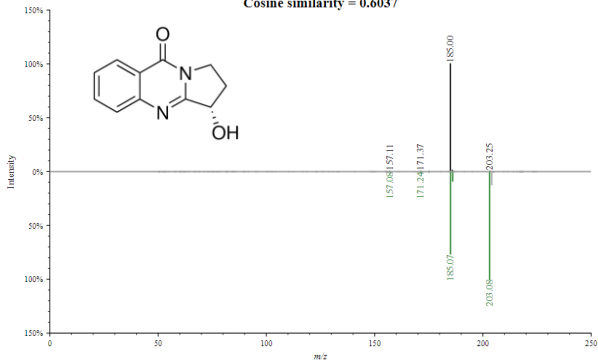


Vasicinone in Vasaka

Top: mzspec:GNPS:TASK-70ee48d645ee477d979dbcf5b7bd8eb6-spec/spec-00021.mzML:scan:3645
Precursor m/z : 202.96 Charge: 0

Bottom: mzspec:GNPS:GNPS-LIBRARY:accession:CCMSLIB00004693581
Precursor m/z : 203.08 Charge: 1

Cosine similarity = 0.6037

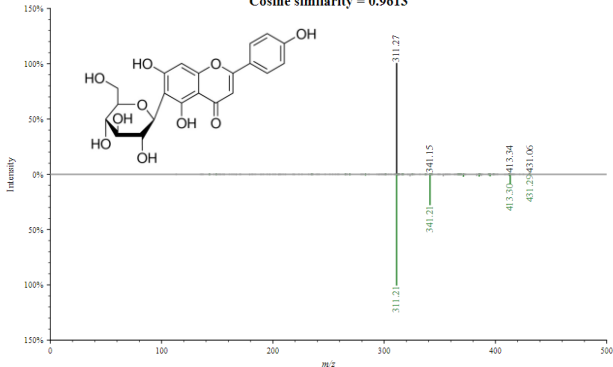


Isovitexin (Homovitexin; Apigenin 6-C-glucoside) in Vasaka

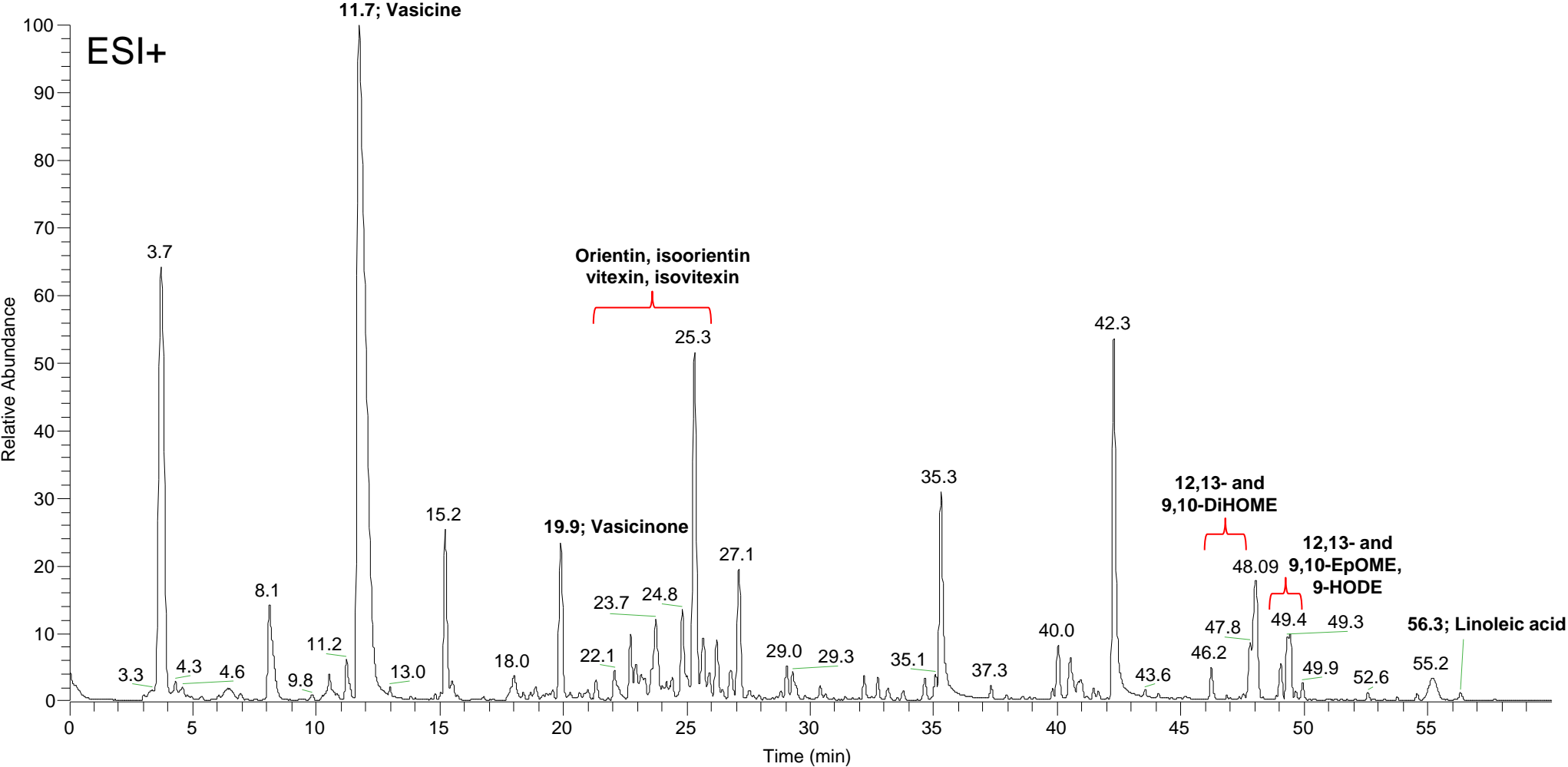
Top: mzspec:GNPS:TASK-70ee48d645ee477d979dbcf5b7bd8eb6-spec/spec-00022.mzML:scan:18279
Precursor m/z : 430.38 Charge: 0

Bottom: mzspec:GNPS:GNPS-LIBRARY:accession:CCMSLIB00003137388
Precursor m/z : 431.10 Charge: 1

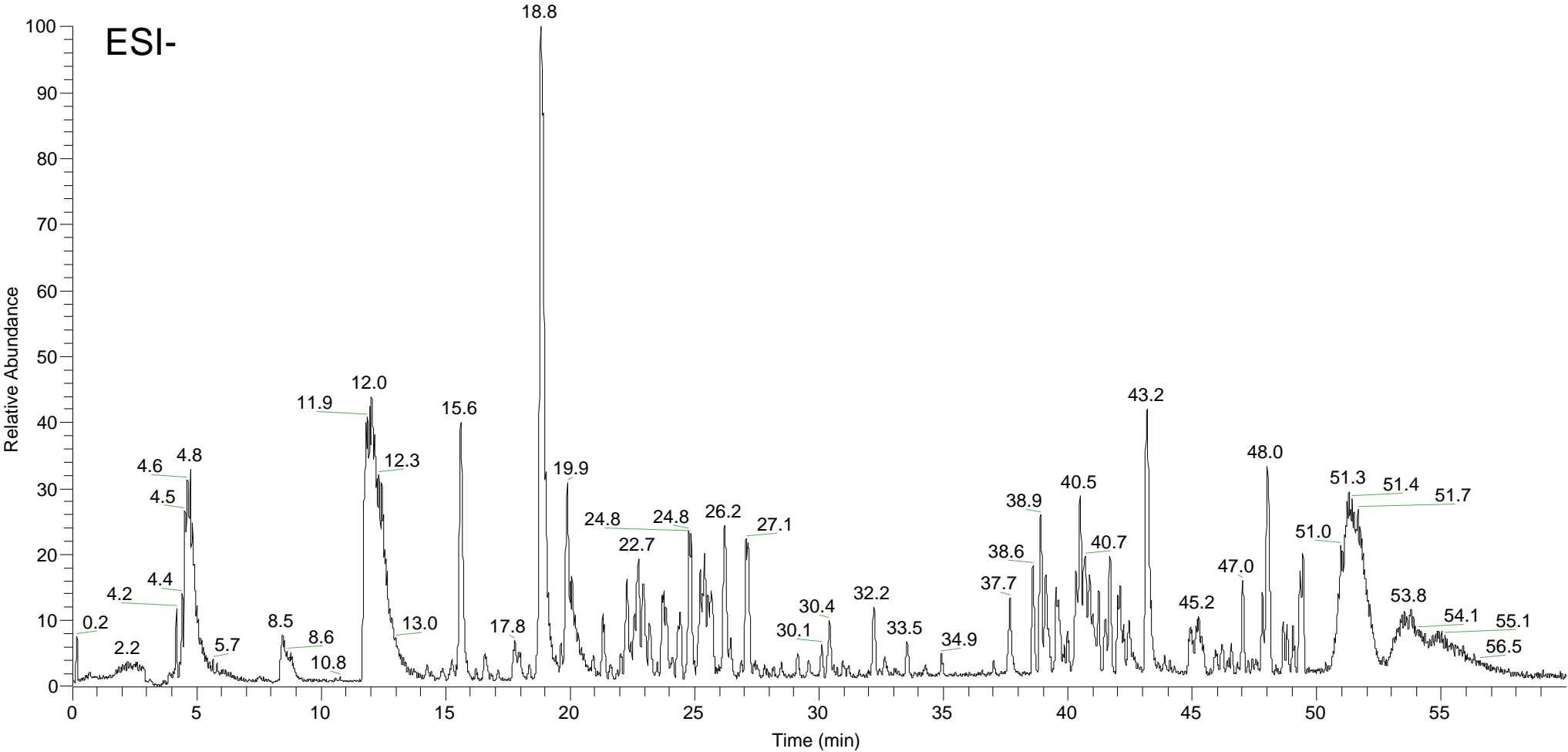
Cosine similarity = 0.9613



Supplemental Figure S5a



Supplemental Figure S5b



Supplemental Figure S6A

9(10)-EpOME in Vasaka

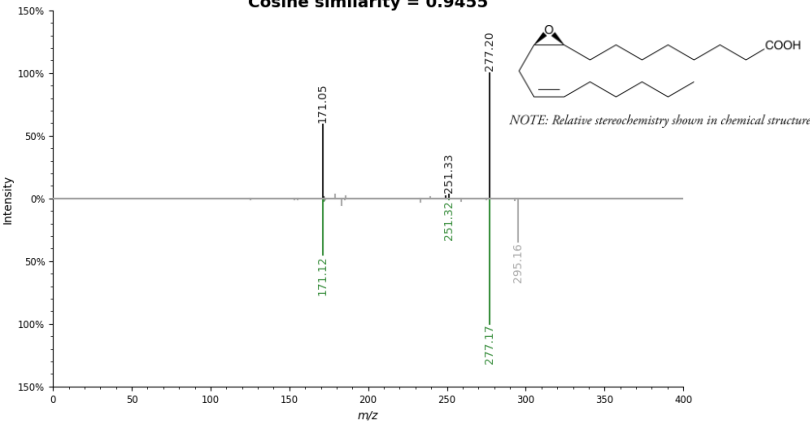
Top: mzspect:GNPS:TASK-f9e0145ef8344d44b6e526e646b8b818-spec/spec-00004.mzML:scan:25298

Precursor m/z: 295.22 Charge: 0

Bottom: mzspect:GNPS:GNPS-LIBRARY:accession:CCMSLIB00005751808

Precursor m/z: 295.23 Charge: 1

Cosine similarity = 0.9455



12(13)-EpOME in Vasaka

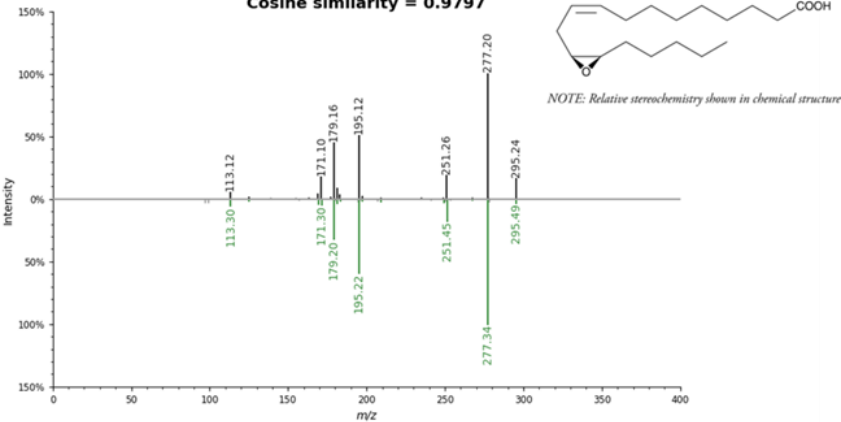
Top: mzspect:GNPS:TASK-efde7d7d1b7c467a97fe3811d1f82e29-spec/spec-00000.mzML:scan:4776

Precursor m/z: 295.24 Charge: 6

Bottom: mzspect:GNPS:GNPS-LIBRARY:accession:CCMSLIB00003137296

Precursor m/z: 295.23 Charge: 1

Cosine similarity = 0.9797



Supplemental Figure S6B

9,10-DiHOME in Vasaka

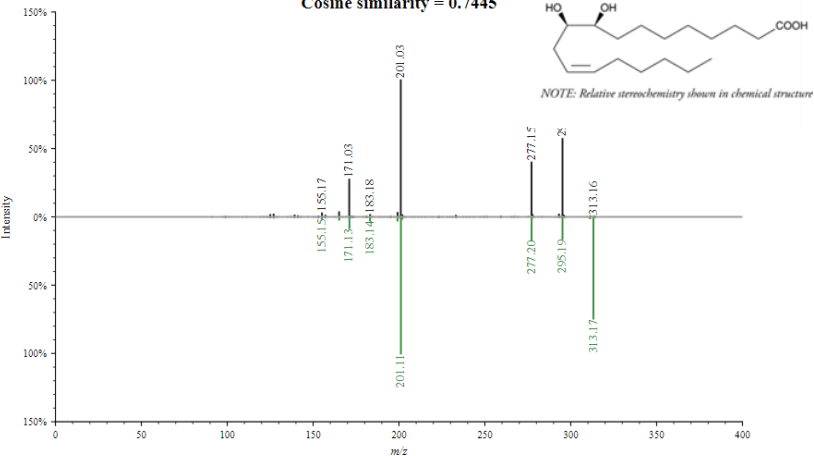
Top: mzspect:GNPS:TASK-70ee48d645ee477d979dbcf5b7bd8eb6-spec/spec-00019.mzML:scan:7124

Precursor m/z: 313.20 Charge: 0

Bottom: mzspect:GNPS:GNPS-LIBRARY:accession:CCMSLIB00005752037

Precursor m/z: 313.24 Charge: 1

Cosine similarity = 0.7445



12,13-DiHOME in Vasaka

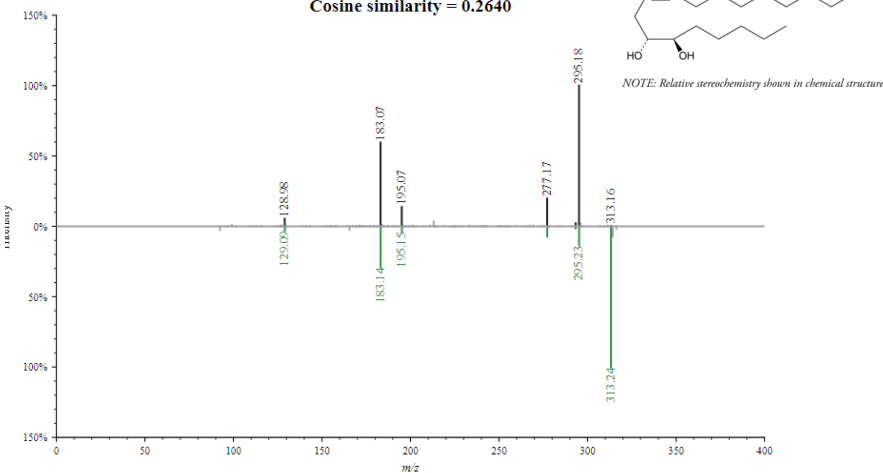
Top: mzspect:GNPS:TASK-70ee48d645ee477d979dbcf5b7bd8eb6-spec/spec-00019.mzML:scan:7062

Precursor m/z: 313.18 Charge: 0

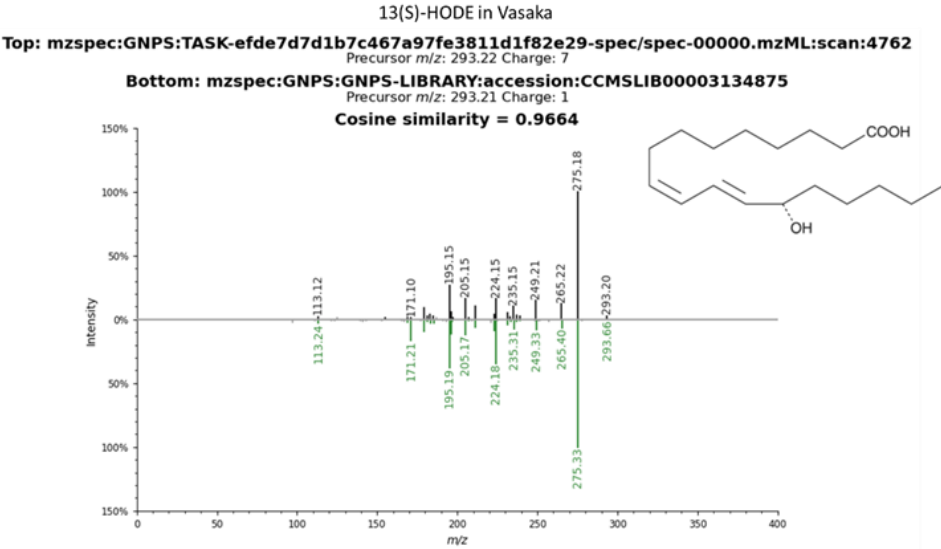
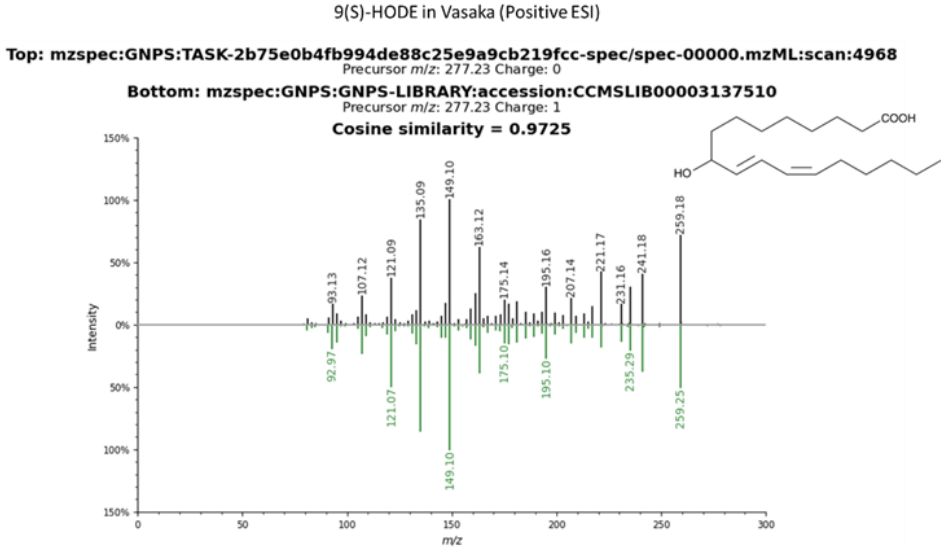
Bottom: mzspect:GNPS:GNPS-LIBRARY:accession:CCMSLIB00003136517

Precursor m/z: 313.25 Charge: 1

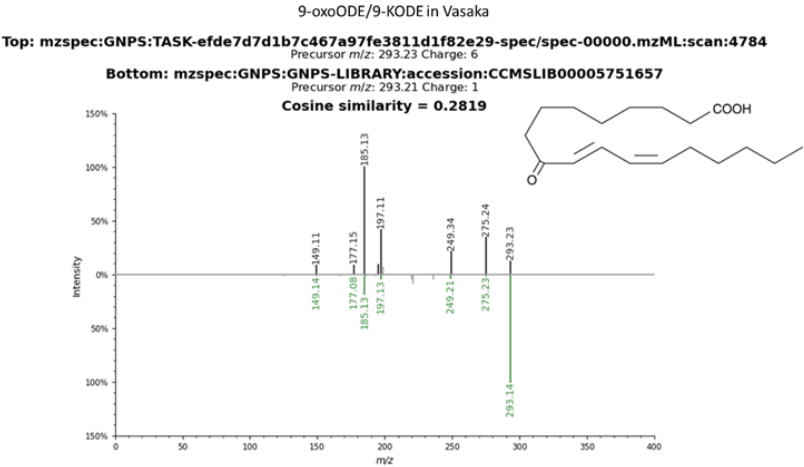
Cosine similarity = 0.2640



Supplemental Figure S6C



Supplemental Figure S6D

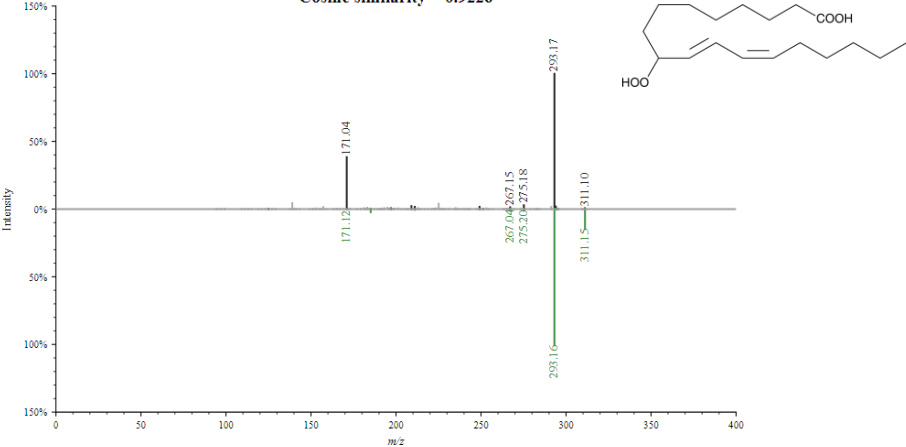


Supplemental Figure S6E

9-HpODE in Vasaka

Top: mzspect:GNPS:TASK-70ee48d645ee477d979dbcf5b7bd8eb6-spec/spec-00019.mzML:scan:6594
Precursor m/z : 311.16 Charge: 0
Bottom: mzspect:GNPS:GNPS-LIBRARY:accession:CCMSLIB00005752901
Precursor m/z : 311.22 Charge: 1

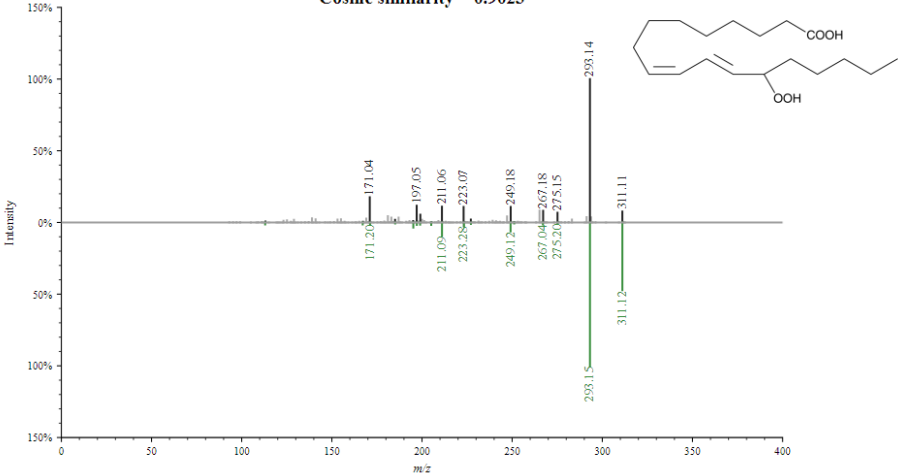
Cosine similarity = 0.9226



13-HpODE in Vasaka

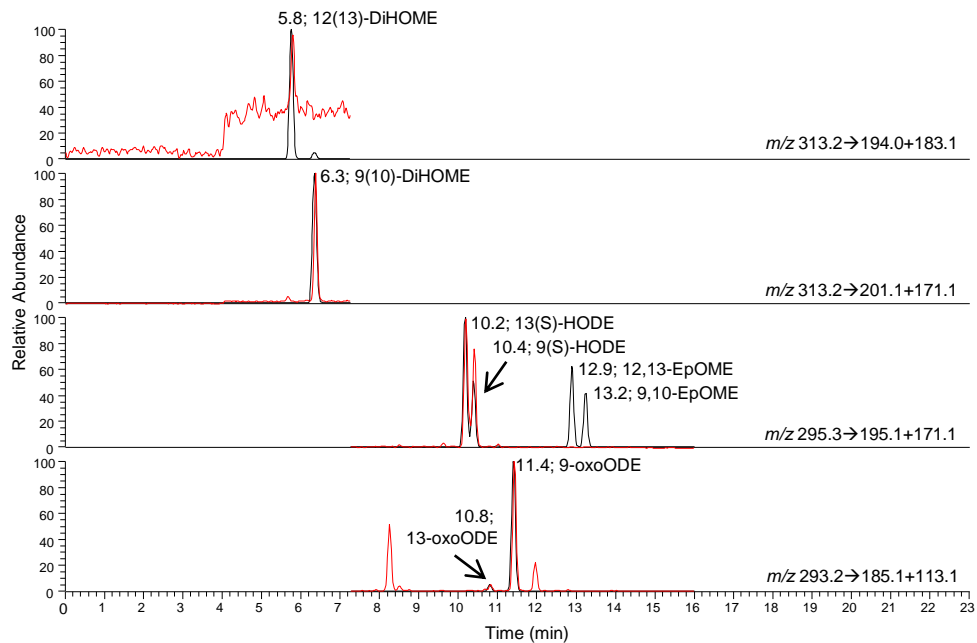
Top: mzspect:GNPS:TASK-70ee48d645ee477d979dbcf5b7bd8eb6-spec/spec-00019.mzML:scan:7150
Precursor m/z : 311.15 Charge: 0
Bottom: mzspect:GNPS:GNPS-LIBRARY:accession:CCMSLIB00005751861
Precursor m/z : 311.22 Charge: 1

Cosine similarity = 0.9023



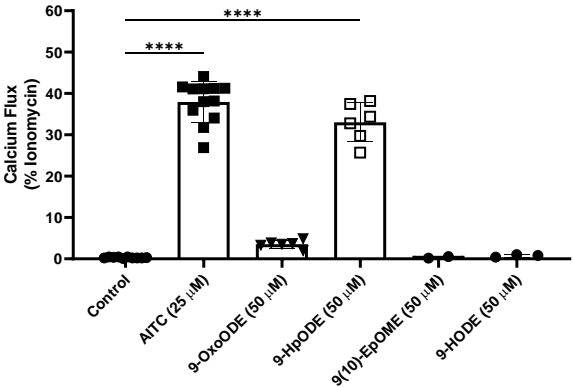
Supplemental Figure S6F

Vasaka tea vs. Oxylin standard mix

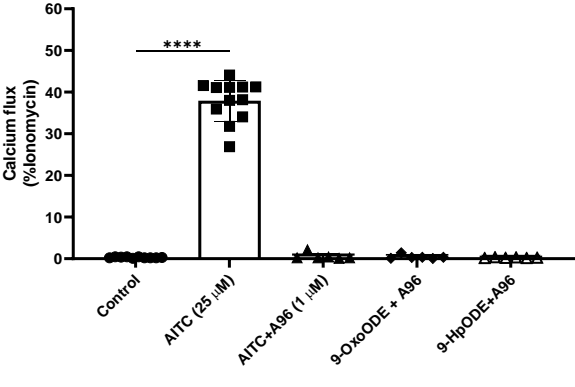


Supplemental Figure S7

TRPA1 Activation



TRPA1 Activation +A967079



TRPA1 Inhibition

