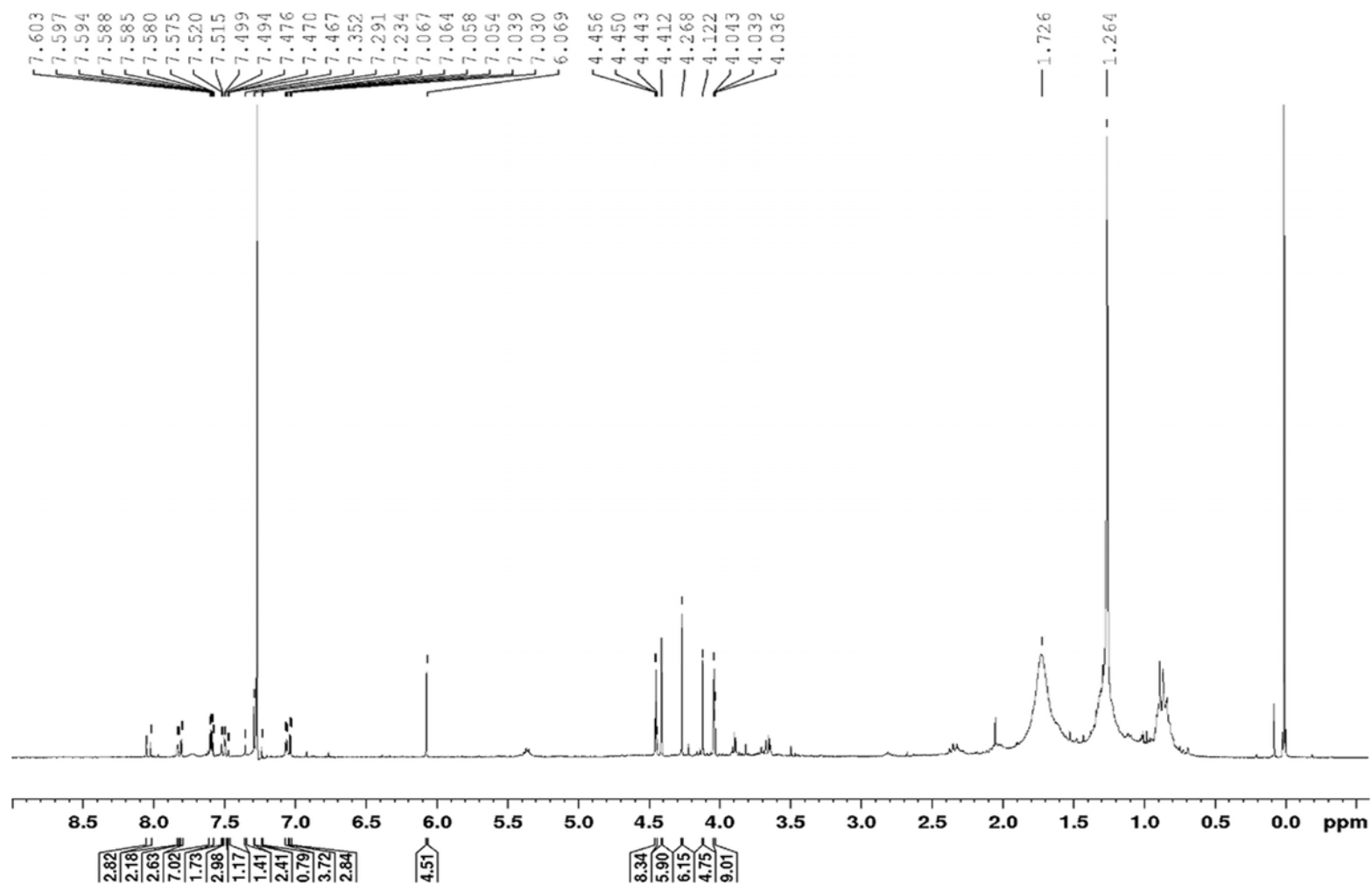


Figure S1. The analyses by TLC plates (A) and (B) LC-DAD (UV/DAD; $\lambda = 245$ nm) from *P. capillacea*.



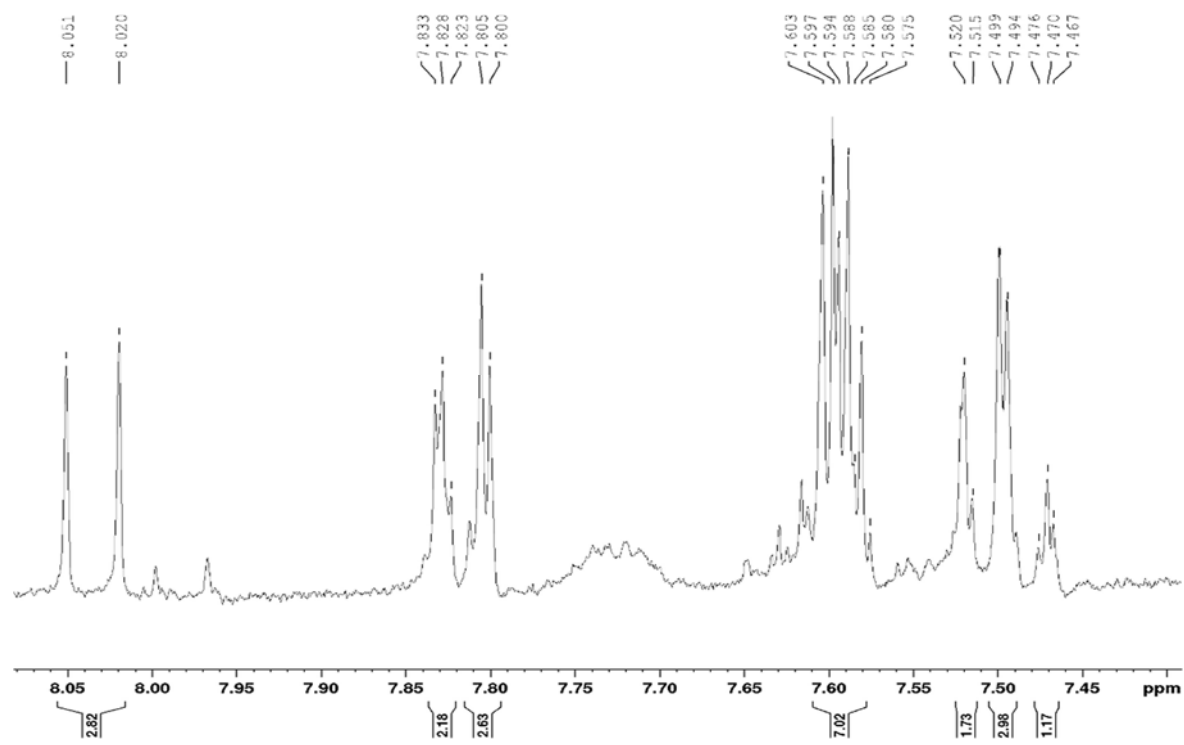


Figure S2. ^1H NMR spectrum ($\text{CDCl}_3\text{-d}_6$, 300 MHz) for the alkaloidal fraction (AF) obtained from *P. capillacea*.