

Figure S1. PSII effective quantum yield of photosynthesis (YII) of *T. occidentalis* and *P. orientalis* data presented are means \pm standard error.

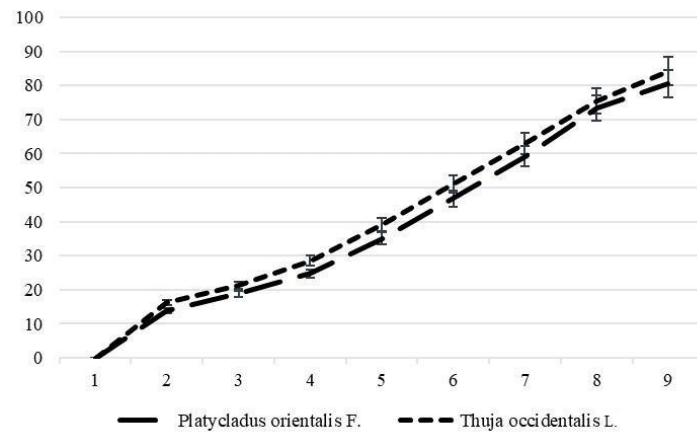


Figure S2. ETR dynamic of *T. occidentalis* and *P. orientalis* data presented are means \pm standard error.

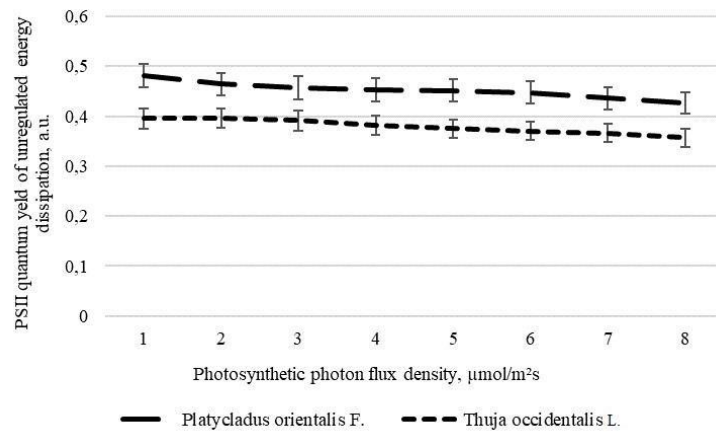


Figure S3. PSII quantum yield of nonregulated energy dissipation (Y(NO)) of *T. occidentalis* and *P. orientalis* data presented are means \pm standard error.

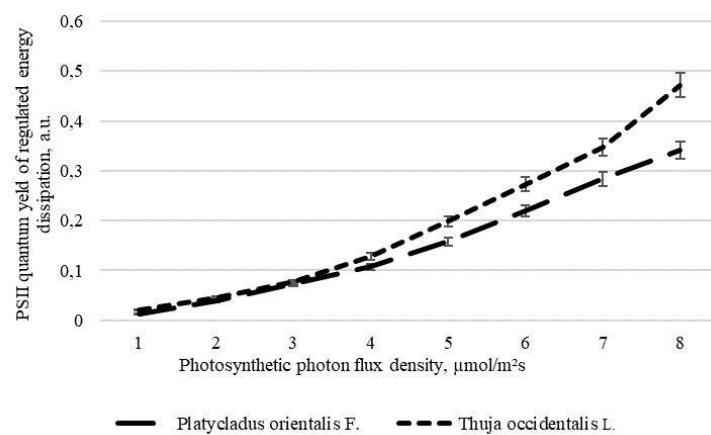


Figure S4. PSII quantum yield of regulated energy dissipation (Y(NPQ)) of *T. occidentalis* and *P. orientalis* data presented are means \pm standard error.

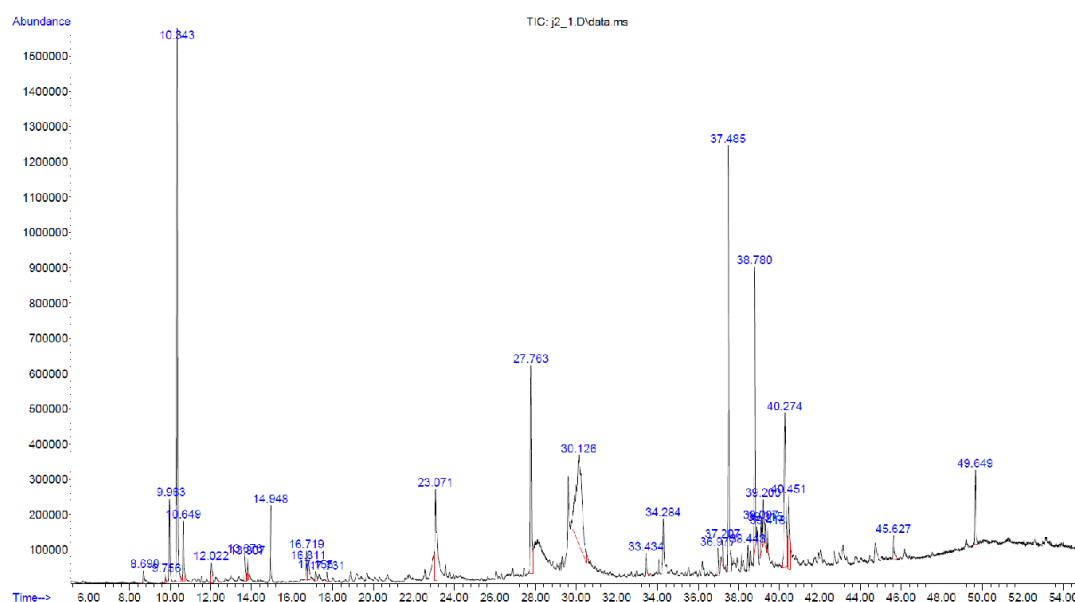


Figure S5. Chromatographic profile of *T. occidentalis* leaf extract.

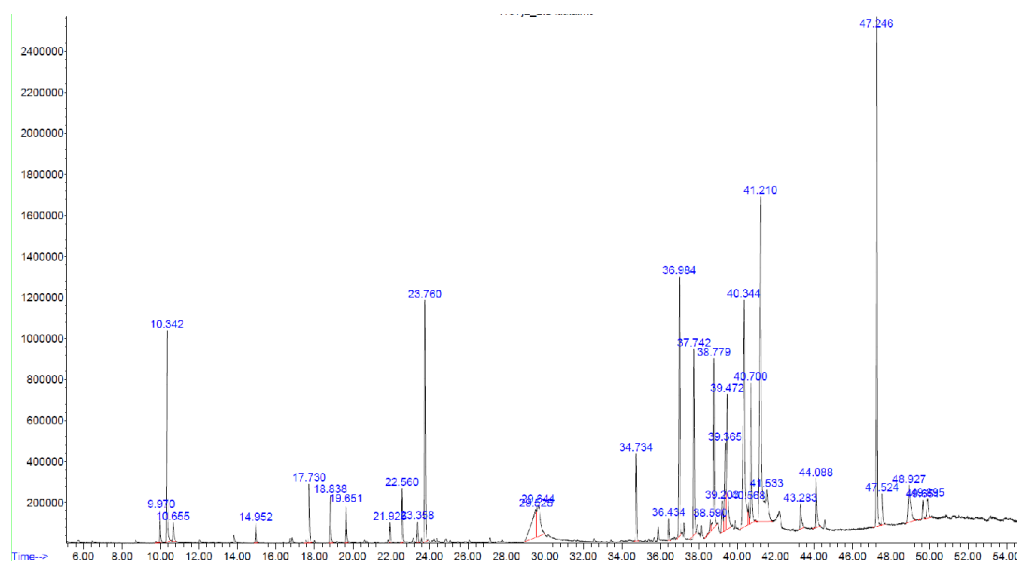


Figure S6. Chromatographic profile of *P. orientalis* leaf extract.