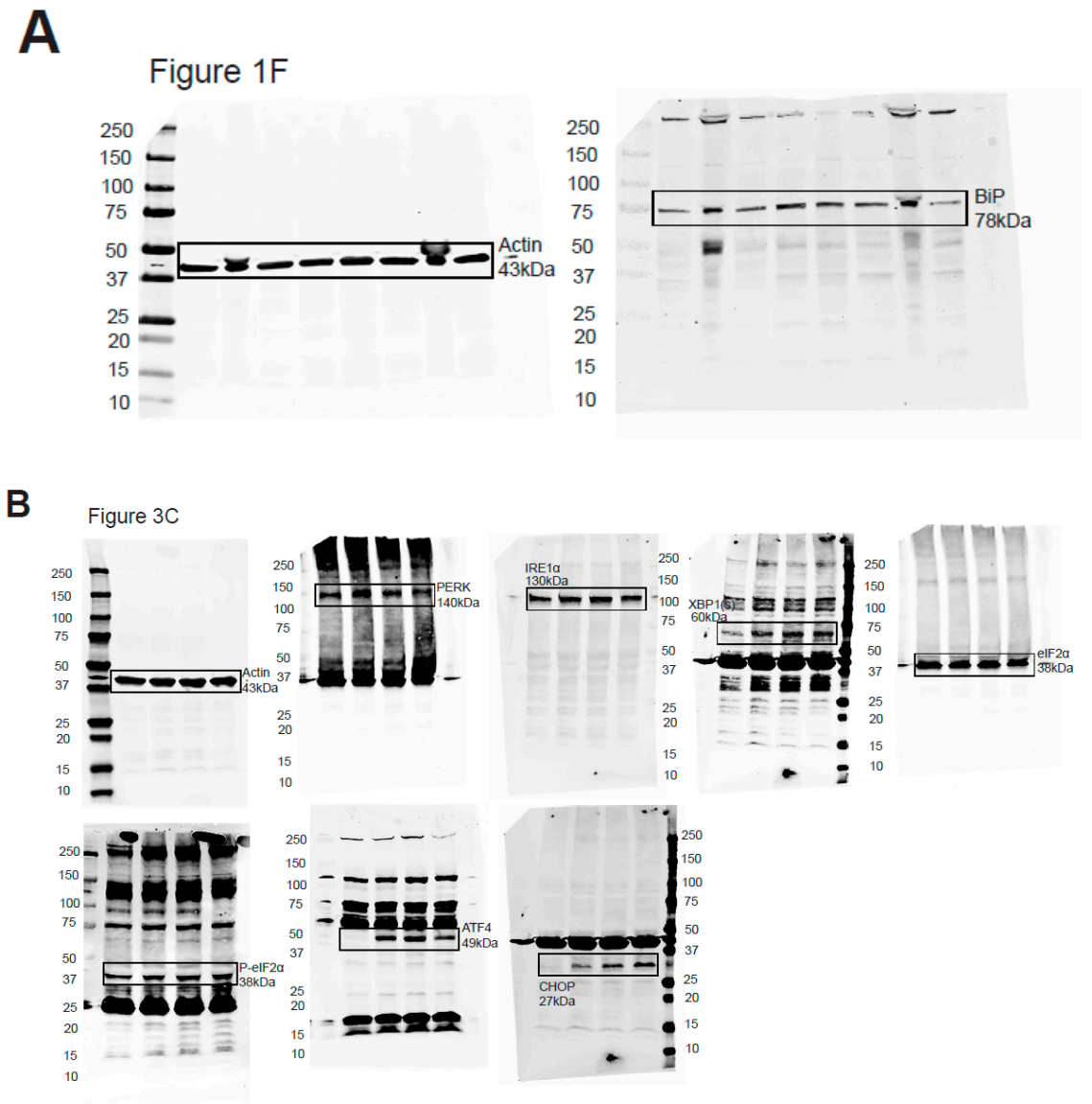
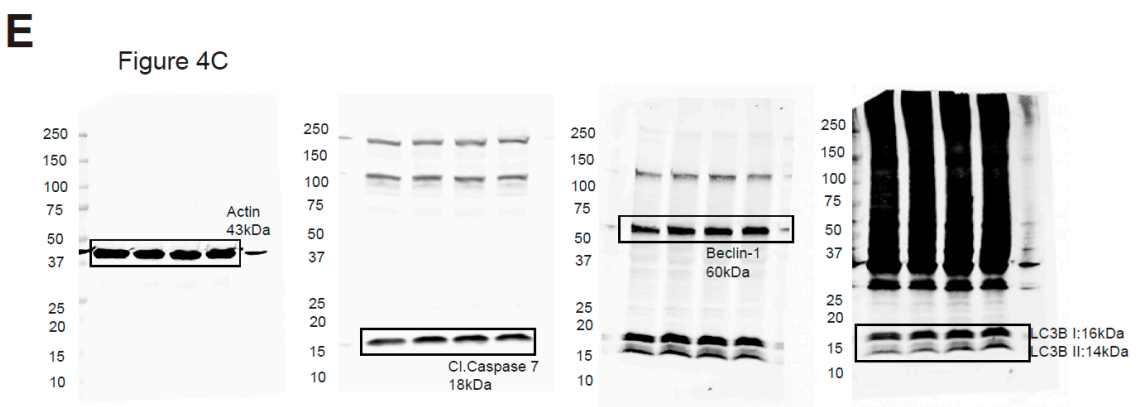
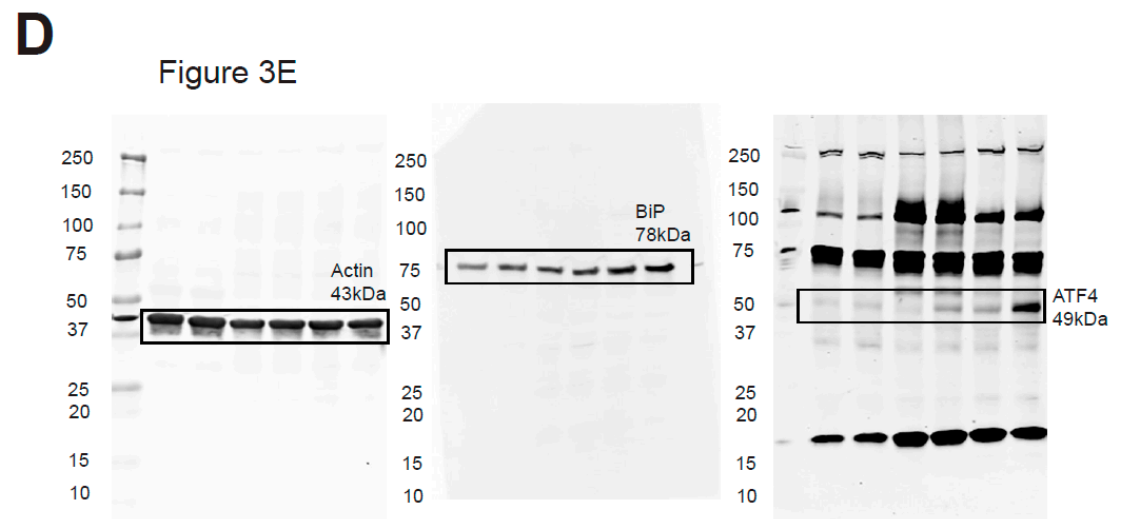
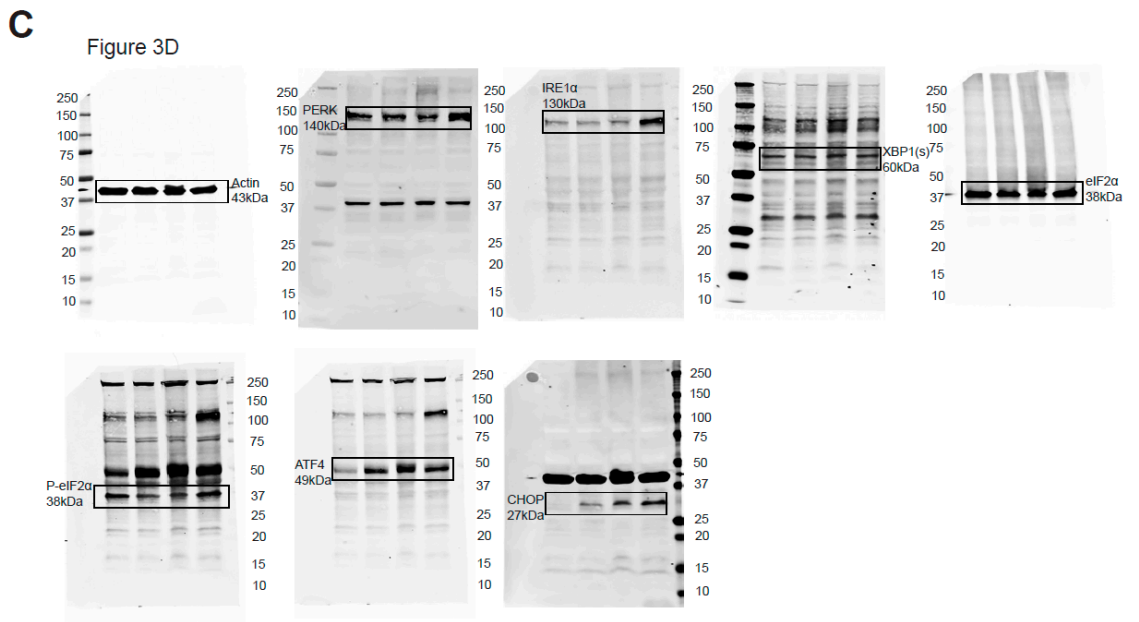


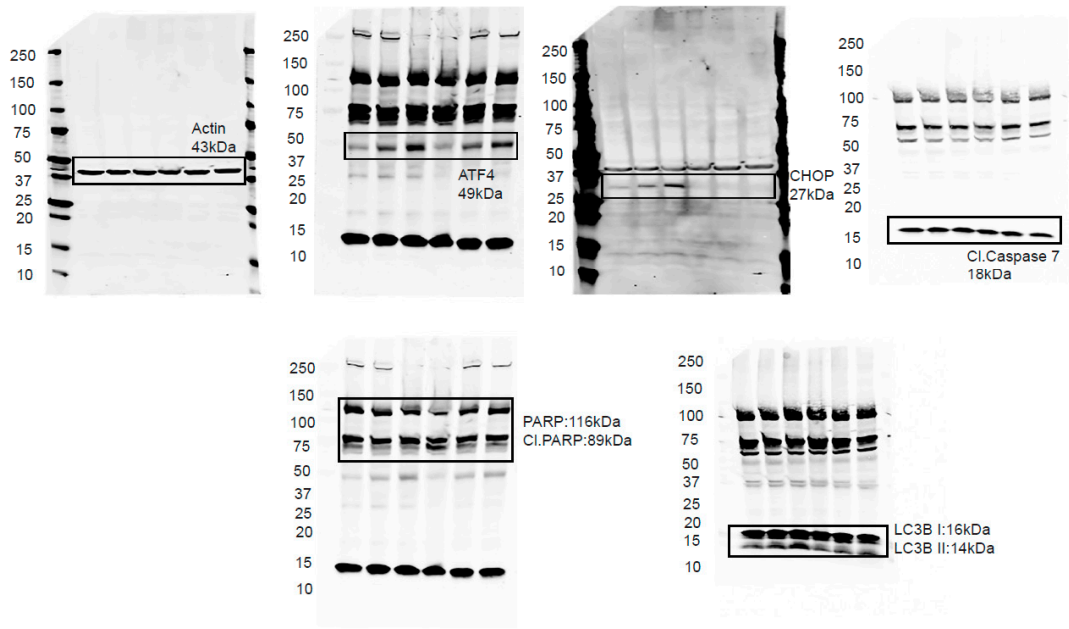
Supplementary Materials: Endoplasmic reticulum stress signaling as a therapeutic target in malignant pleural mesothelioma





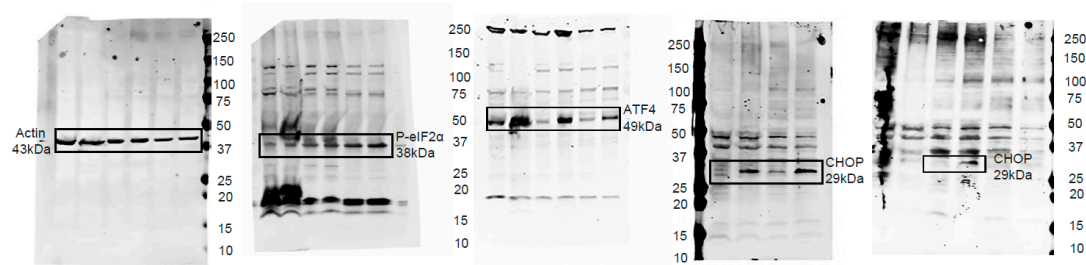
F

Figure 4G



G

Figure 5G



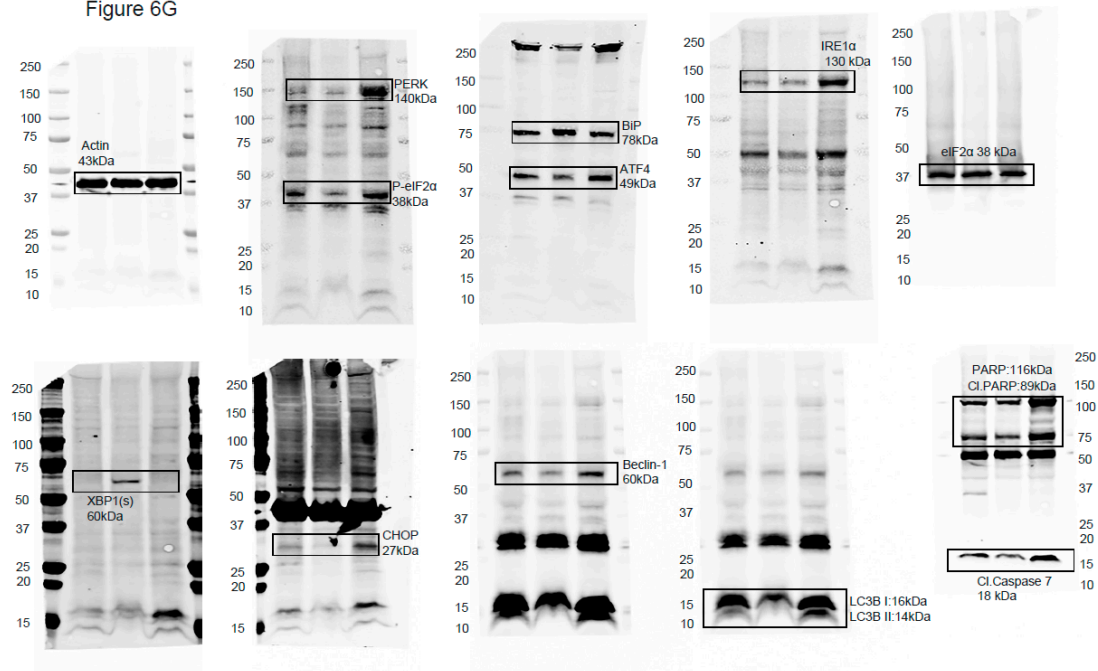
H**Figure 6G**

Figure S1 (A-H). Uncropped blots from Figure 1F, 3C-E, 4C, G, 5G and 6G. Numbers next to the blot indicate molecular weight (kDa) of the marker.