

Figure S1, related to Fig 1D. Colony forming units (CFUs mL⁻¹) after 4-h treatment of SS-1 and/or SS-2 with different drugs. (A) Colony forming units (CFUs mL⁻¹) after 4-h treatment of SS-1 with PBS (solvent control), 20 μ g/mL 5-FU (4 \times MIC), 10 μ g/mL Amoxicillin (4 \times MIC), or 2 mg/mL Polymyxin B (4 \times MIC). (B) Colony forming units (CFUs mL⁻¹) after 4-h treatment of SS-2 with PBS (solvent control), 20 μ g/mL 5-FU (4 \times MIC), 10 μ g/mL Amoxicillin (4 \times MIC), or 2 mg/mL Polymyxin B (4 \times MIC). Data points at 1×10^2 CFU mL⁻¹ are below the level of detection. Each data point represents 3 biological replicates. Mean \pm SD are shown.

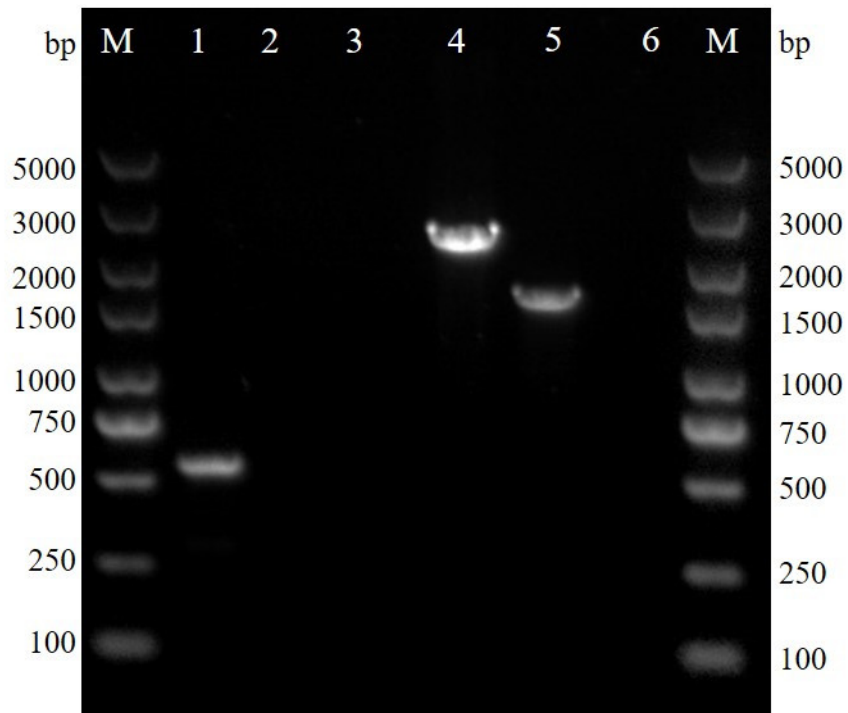


Figure S2. PCR confirmation of the knockout mutant strain $\Delta thyA$. Lane 1, primers ORF-S/ORF-A, HA9801; lane 2, primers ORF-S/ORF-A, $\Delta thyA$; lane 4, primers XY-S/XY-A, HA9801; lane 5, primers XY-S/XY-A, $\Delta thyA$. Lanes 3 and 6 represent the negative control.

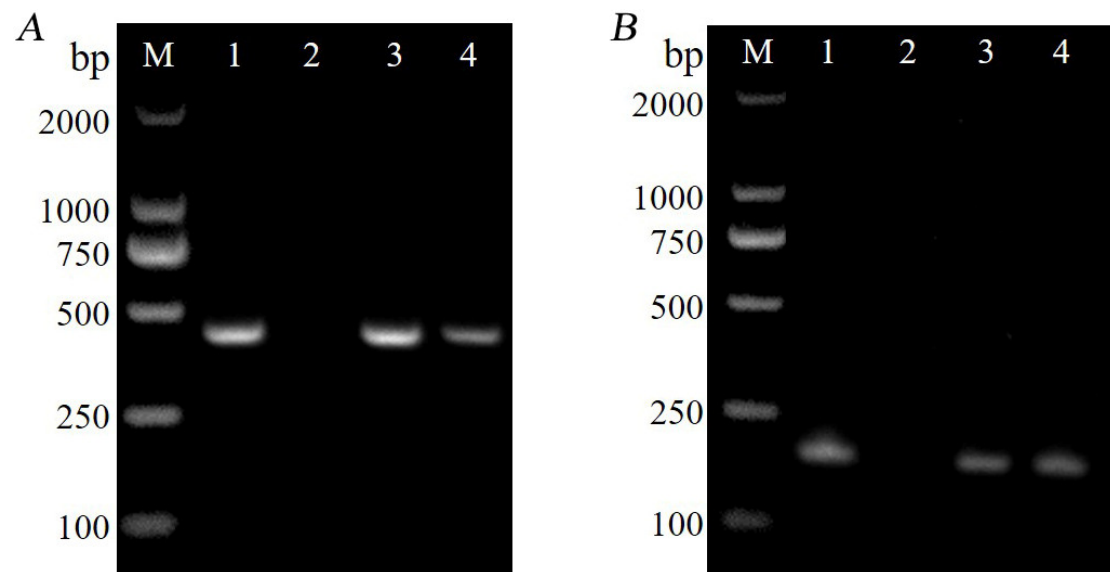


Figure S3. Identification of strain types and serotypes of SS-1 and SS-2. (A) PCR confirmation of *gdh* gene. Lane 1, HA9801; lane 2, negative control; lane 3, SS-1; lane 4, SS-2. **(B)** PCR confirmation of *cps2* gene. Lane 1, HA9801; lane 2, negative control; lane 3, SS-1; lane 4, SS-2.