

Table S1. Primer sequences used for semi-quantitative RT-PCR reactions.

Gene	Forward (5'-3')	Reverse (5'-3')
Bax	5'-CGGCGAATTGGAGATGAACTGG-3'	5'-CTAGCAAAGTAGAAGAGGGCAACC-3'
Caspase-3	5'-GTGGAACTGACGATGATATGGC-3'	5'-CGCAAAGTGAAGTGGATGAACC-3'
Bcl-2	5'-TGTGGATGACTGACTACCTGAACC-3'	5'-CAGCCAGGAGAAATCAAACAGAGG-3'

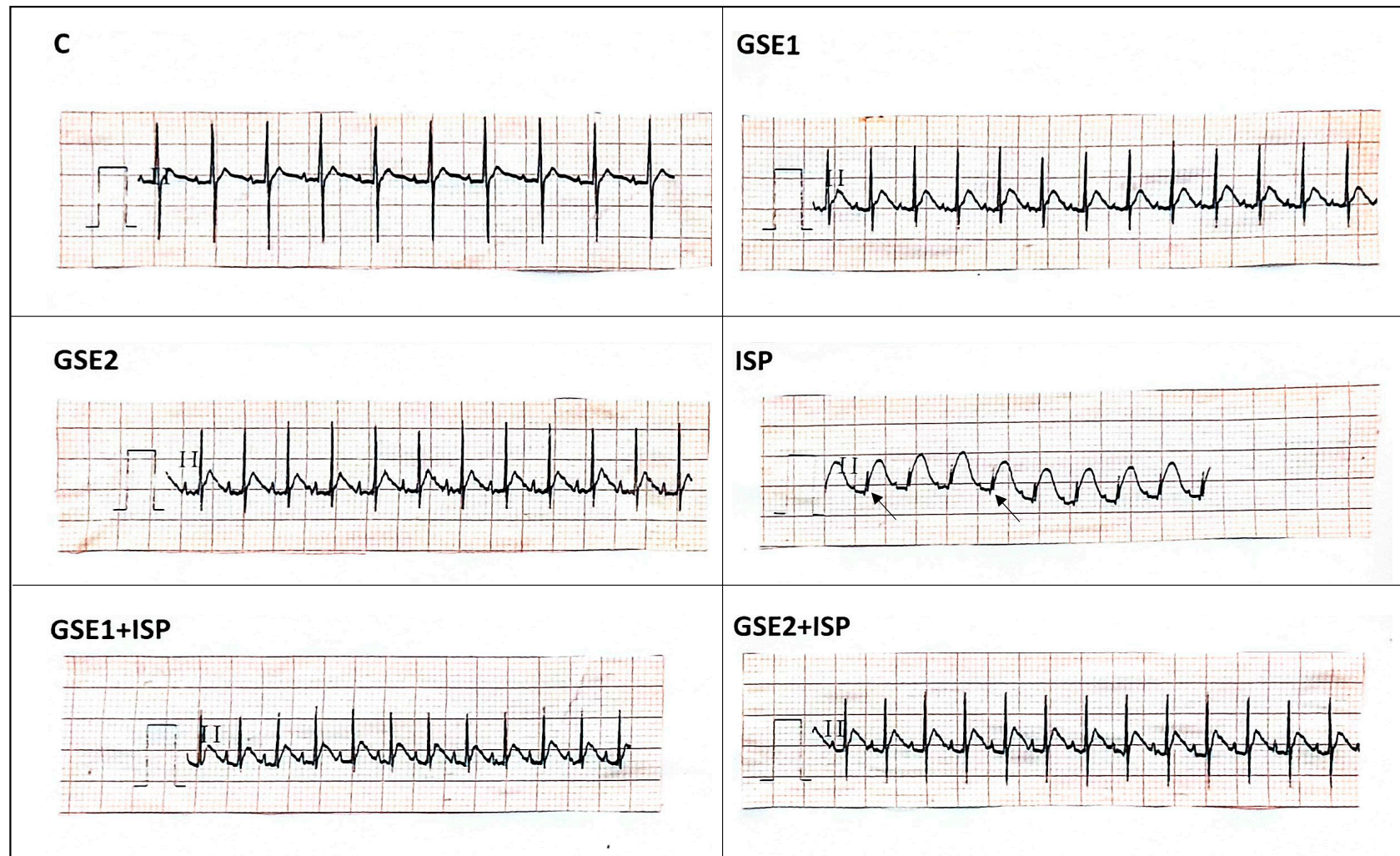


Figure S1. Electrocardiogram (ECG) pattern of control (C) and experimental animals. The control group showed a normal ECG pattern. The isoproterenol (ISP)-treated group showed pathological changes as ST-segment elevation (Pardee Wave) (arrow). GSE: grapevine shoot extract.