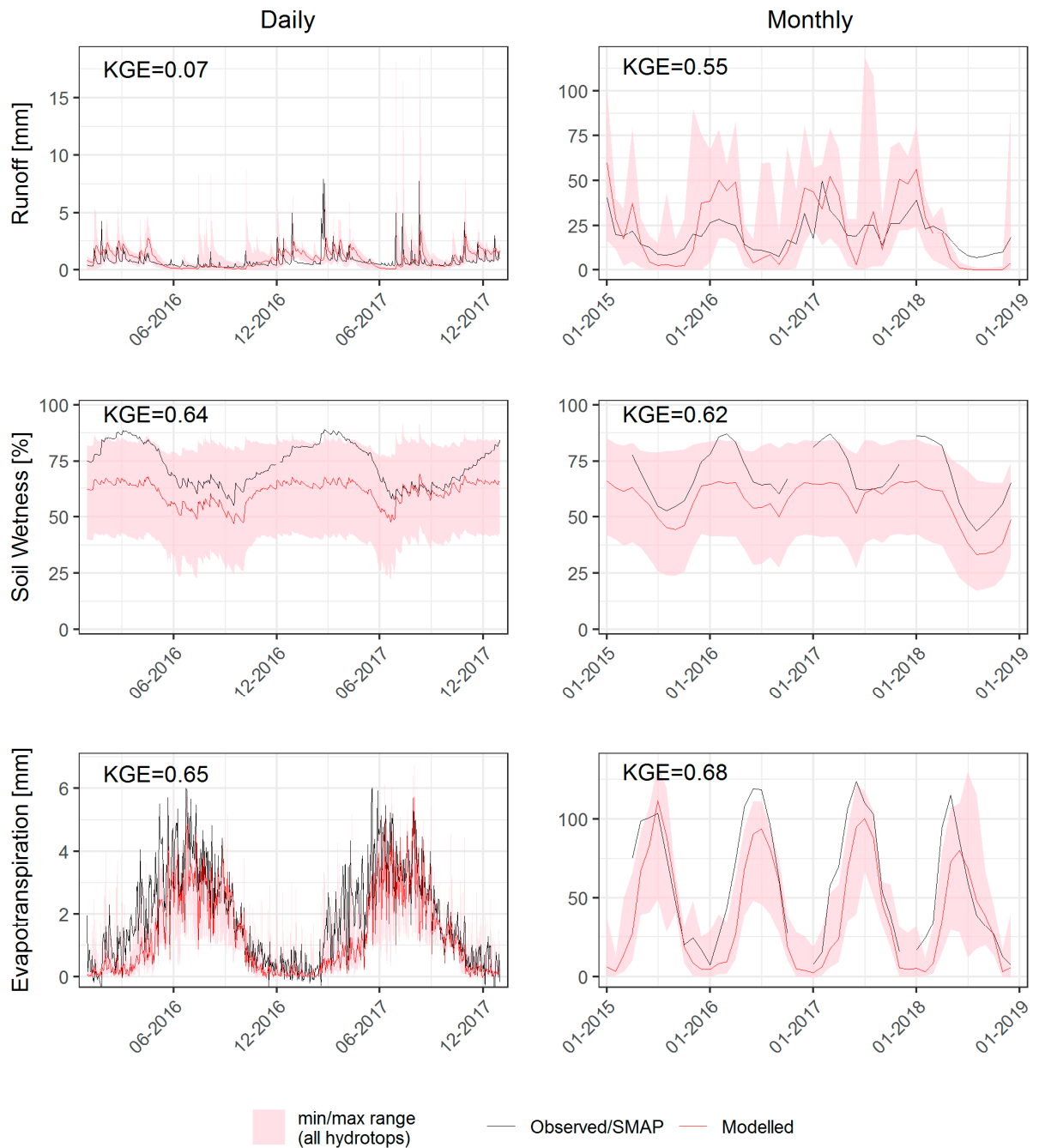


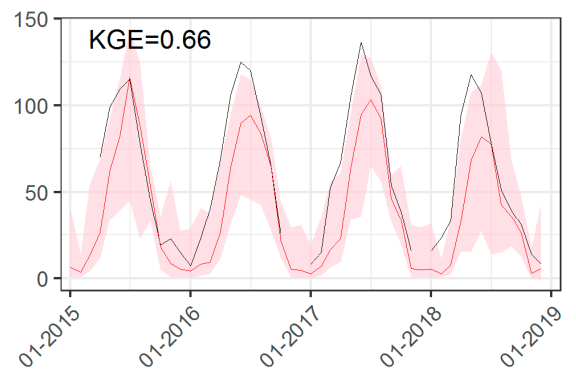
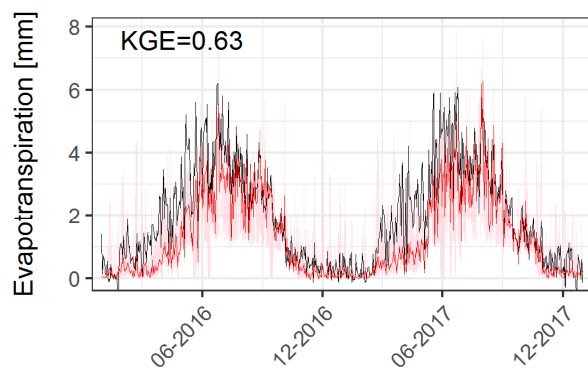
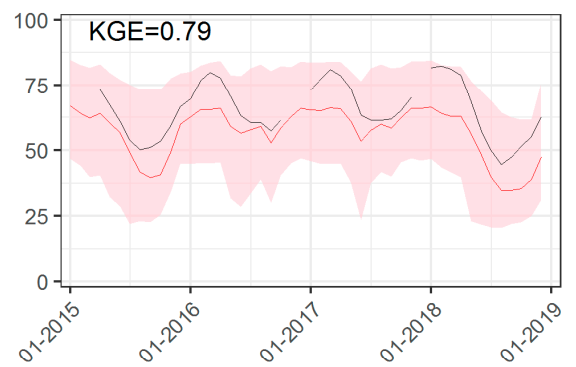
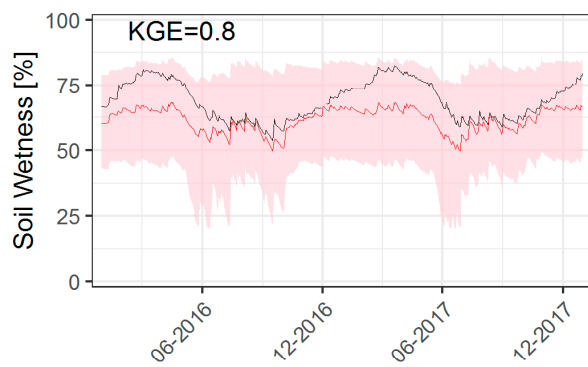
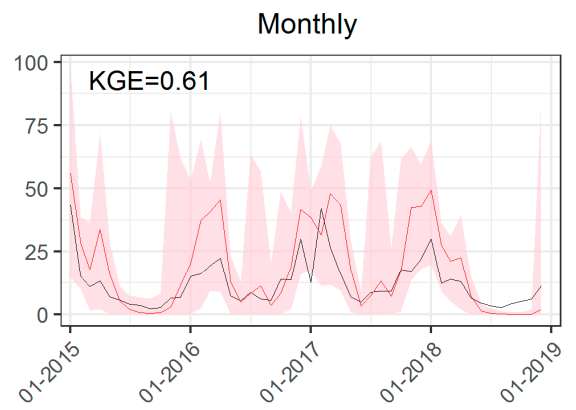
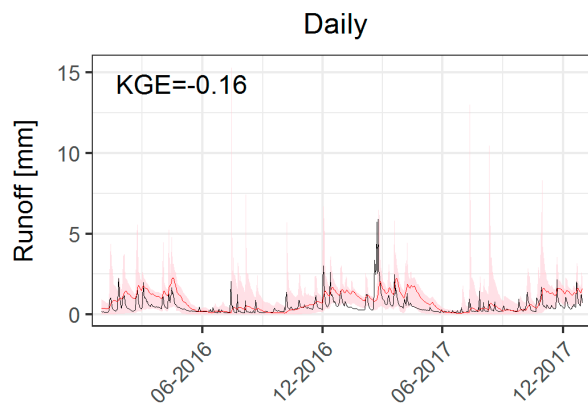
Supplementary Materials

Supplementary Materials: the following are available online at <https://zenodo.org/record/4095208#.X6K9P7sxnCo>, Figure S. 1-9: Daily and monthly time series of simulated (weighted mean and max/min range from all hydrotops) runoff, soil wetness and ET compared with observations for the selected catchment (IDs from 1–3 and 5–10).

Großscheidnitz (1)

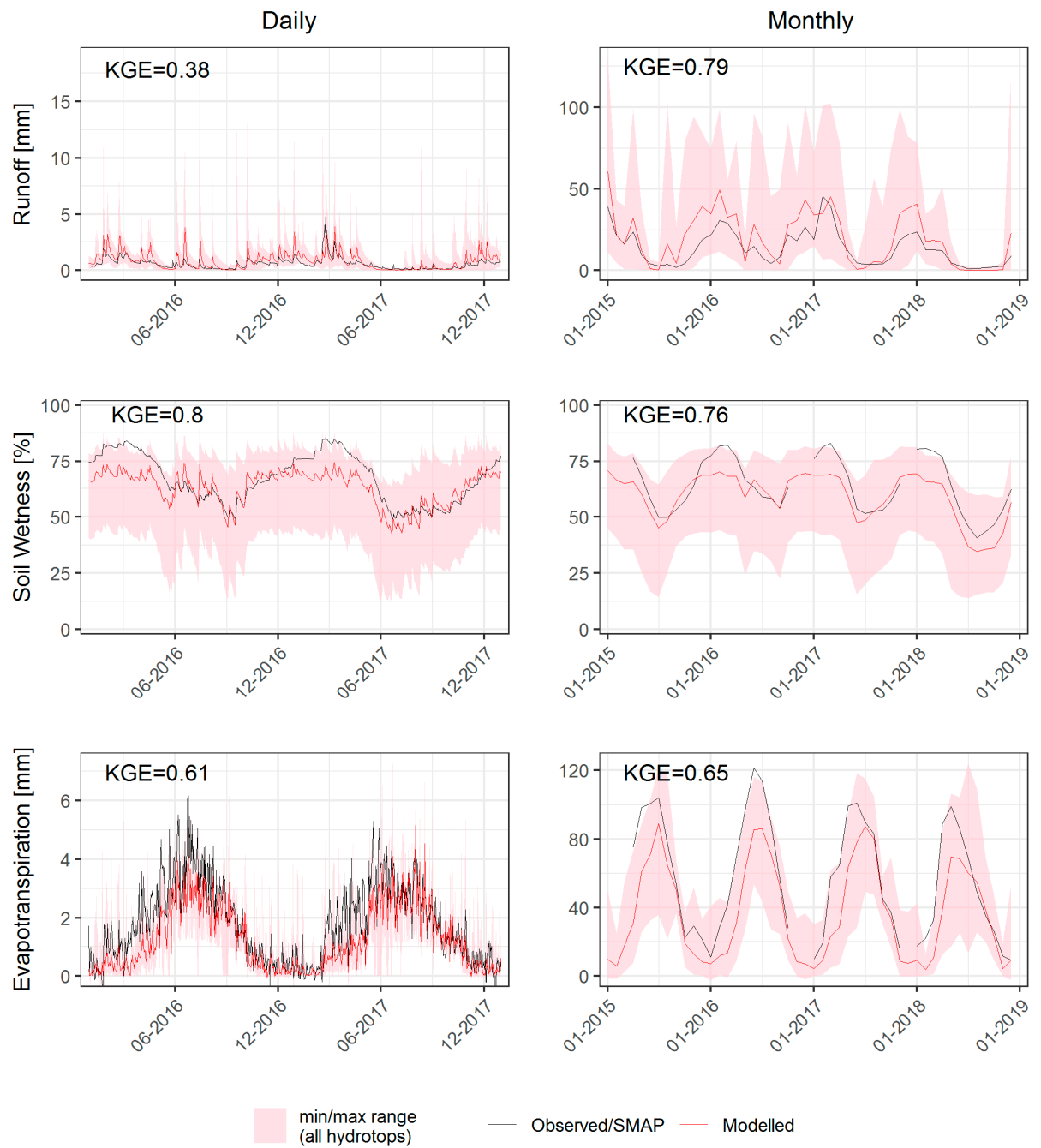


Holtendorf (2)

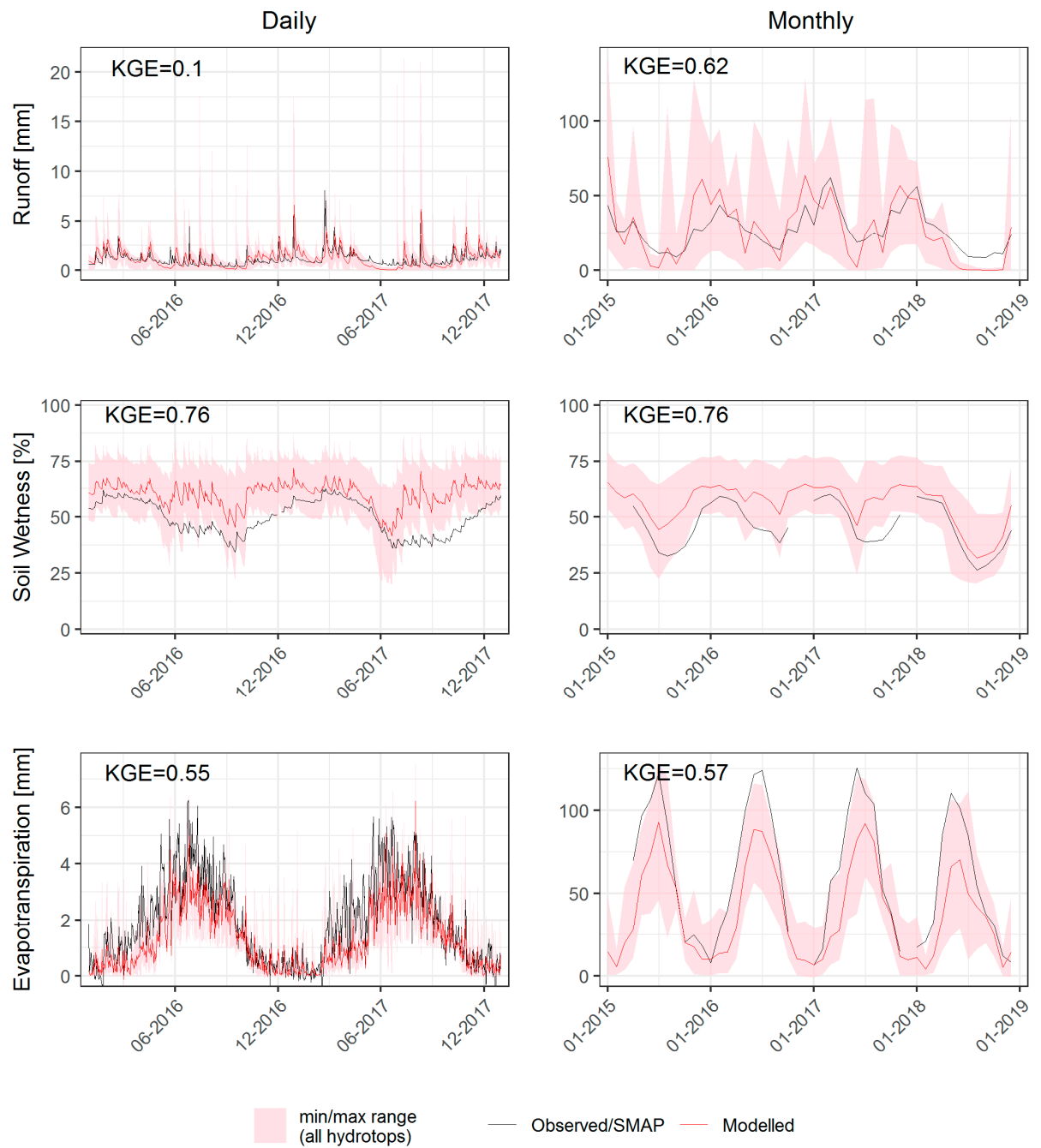


min/max range (all hydrotops)
 Observed/SMAP
 Modelled

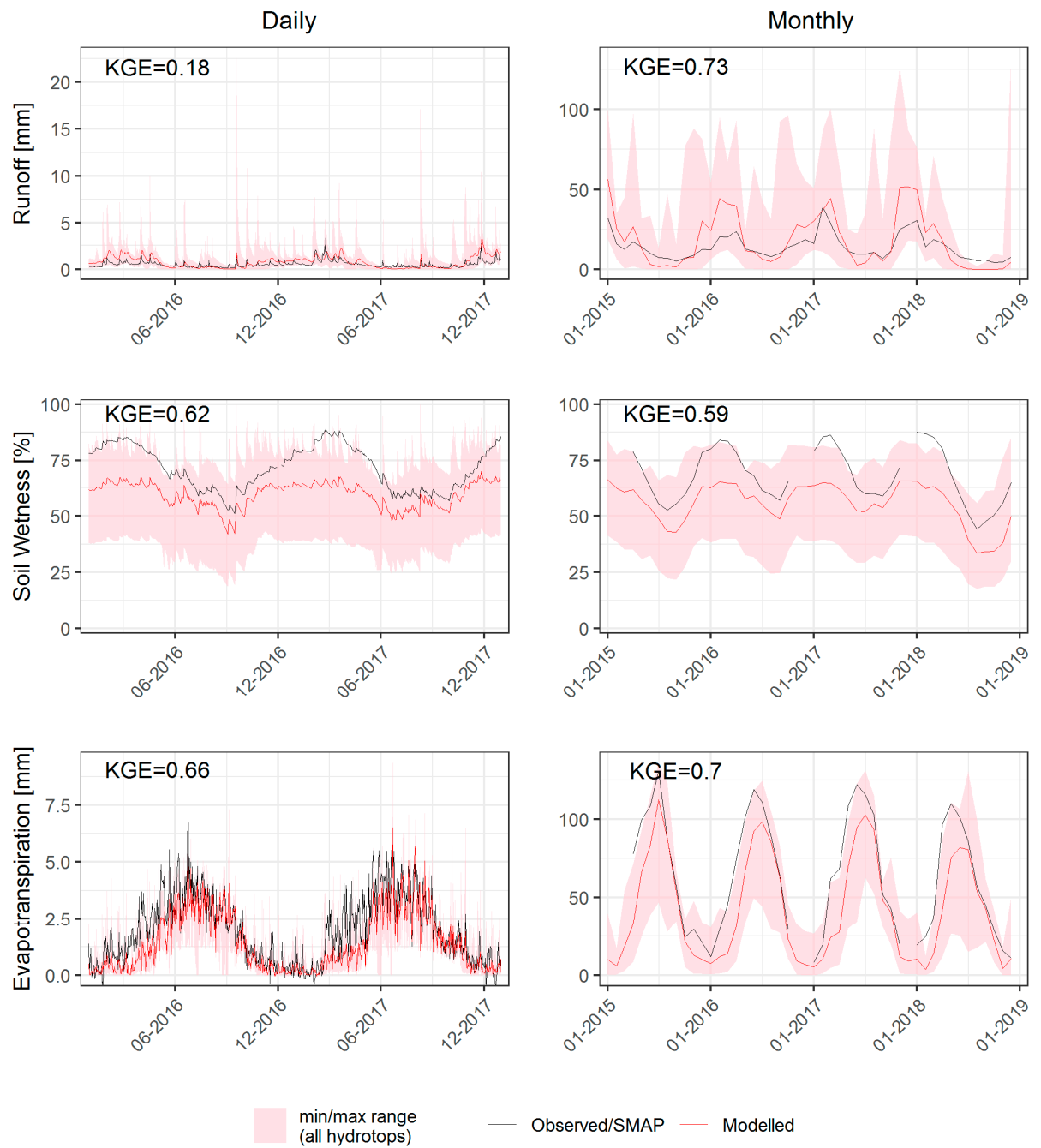
Kreischa (3)



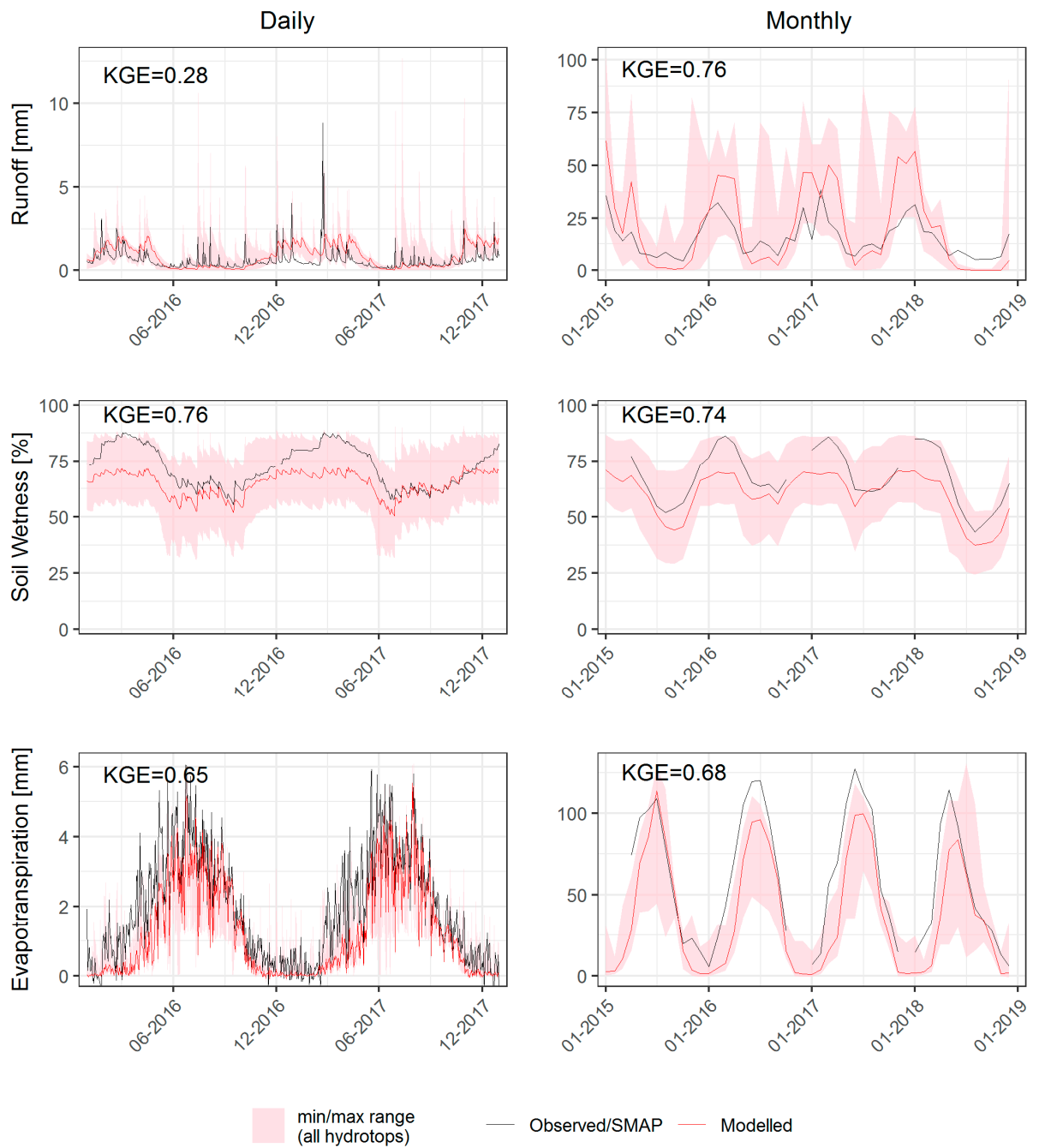
Neustadt (5)



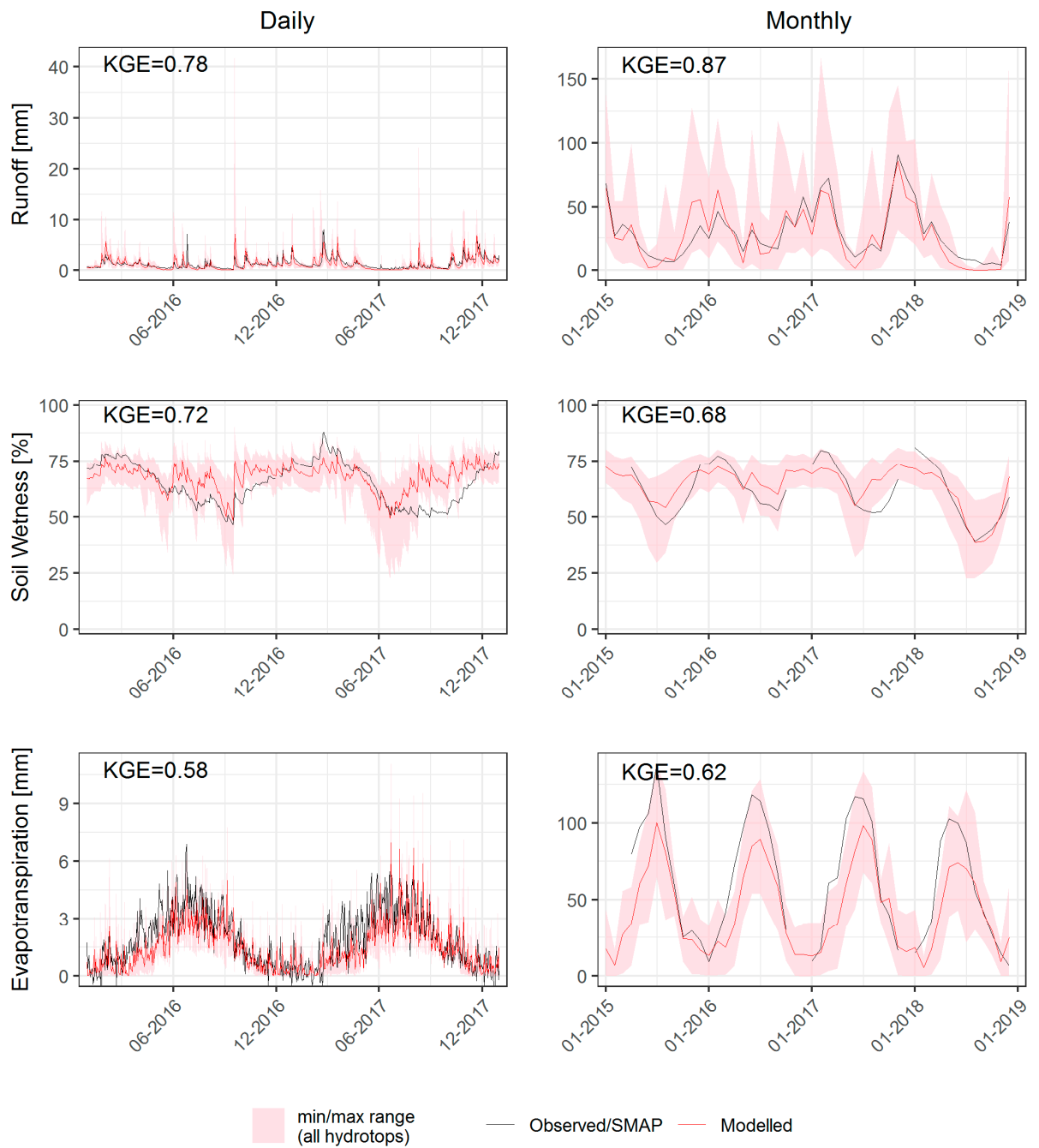
Niedermuelsen (6)



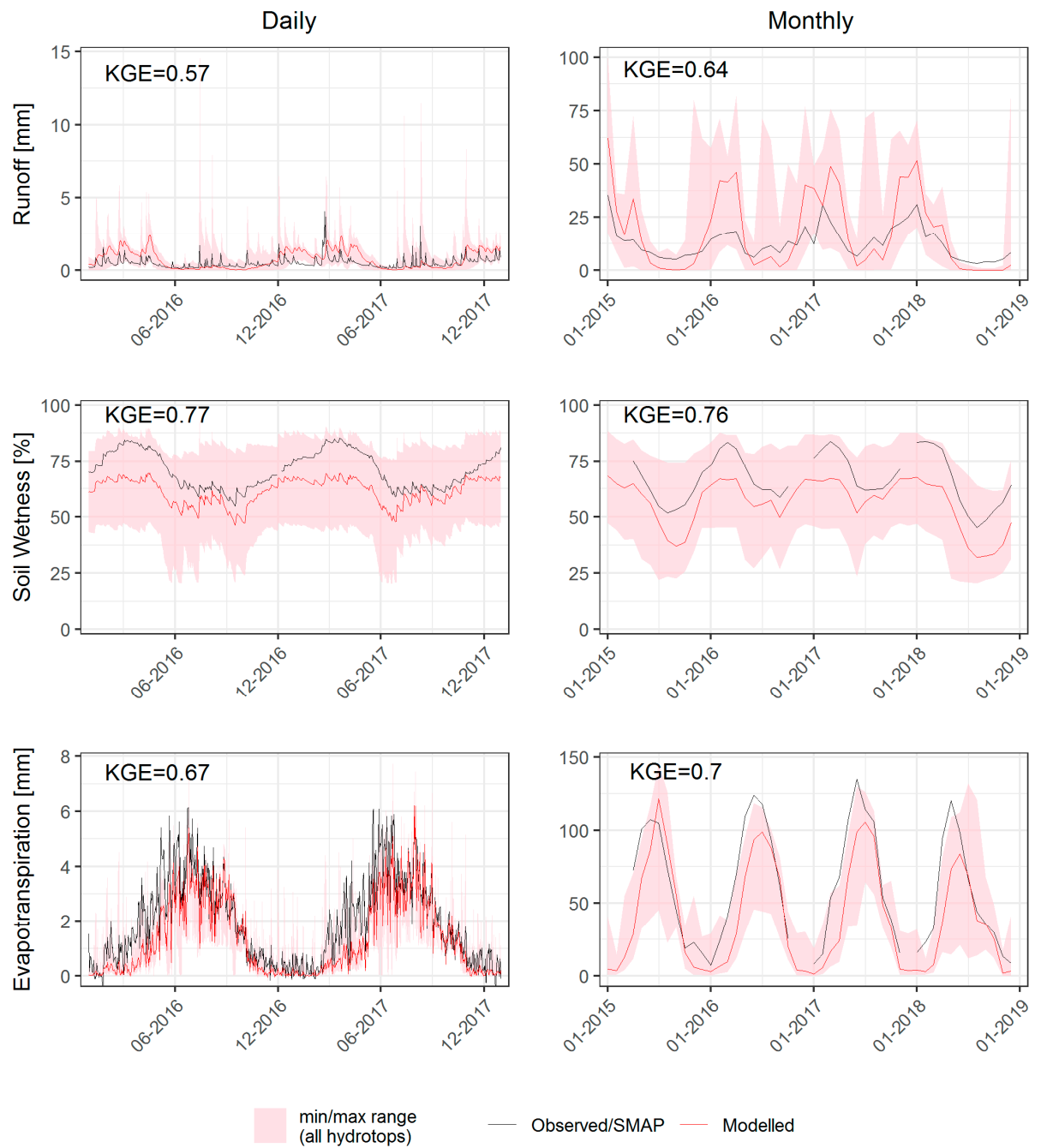
Nideroderwitz (7)



Niederzwoenitz (8)



Reichenbach-Oberlausitz (9)



Tannenberg (10)

