

Figure S1. Structure of tannic acid

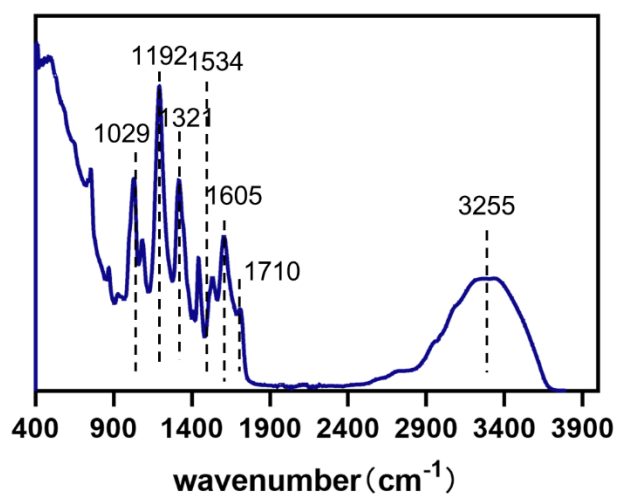


Figure S2. FTIP of the hydrogel in the wet state

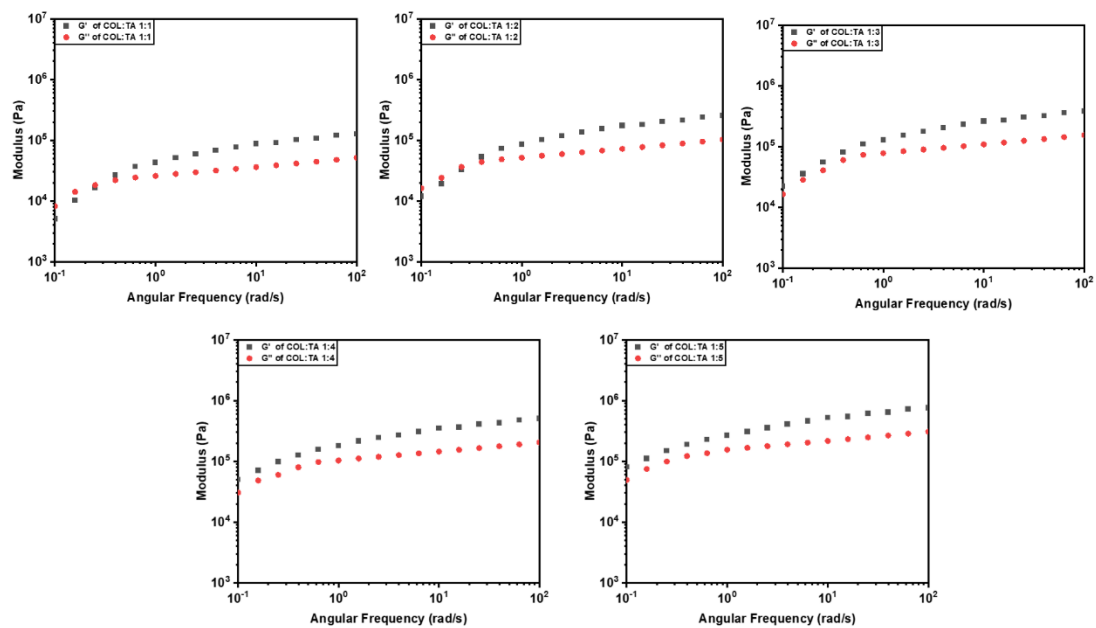


Figure S3. The G' and G'' of hydrogels

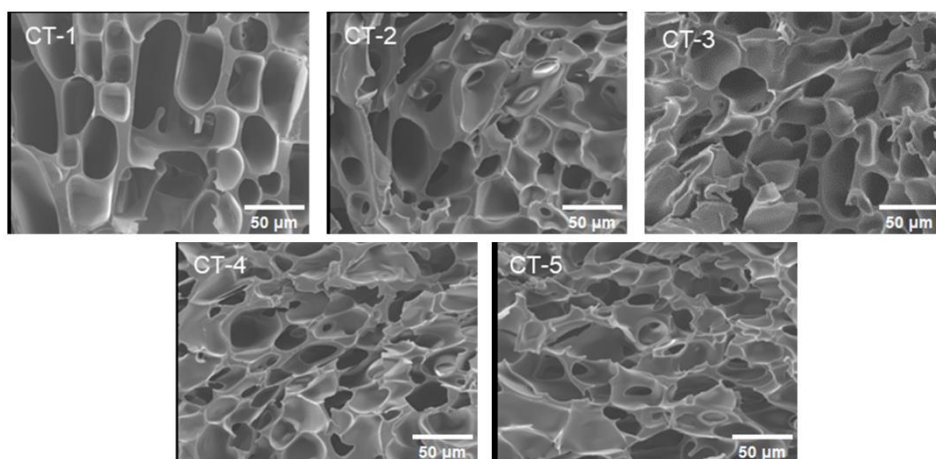


Figure S4. SEM of the hydrogel

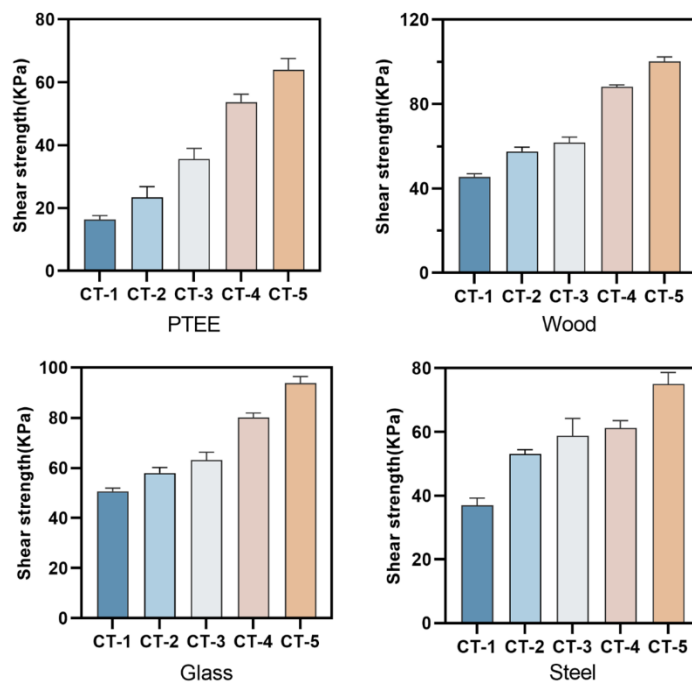


Figure S5. Tensile strength of common substrates

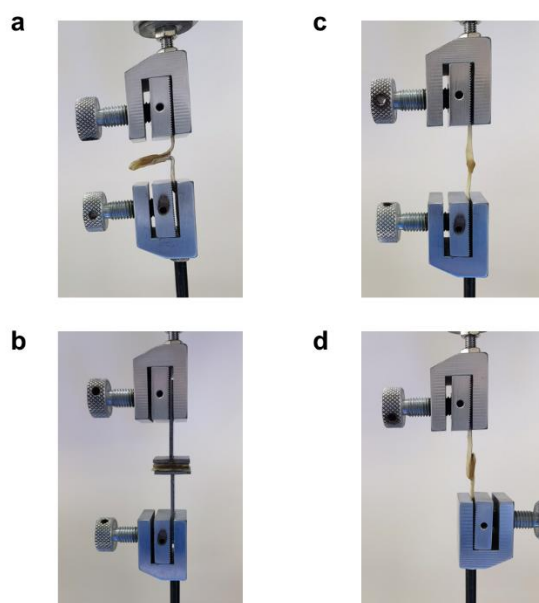


Figure S6. Tensile shear and peel strength.

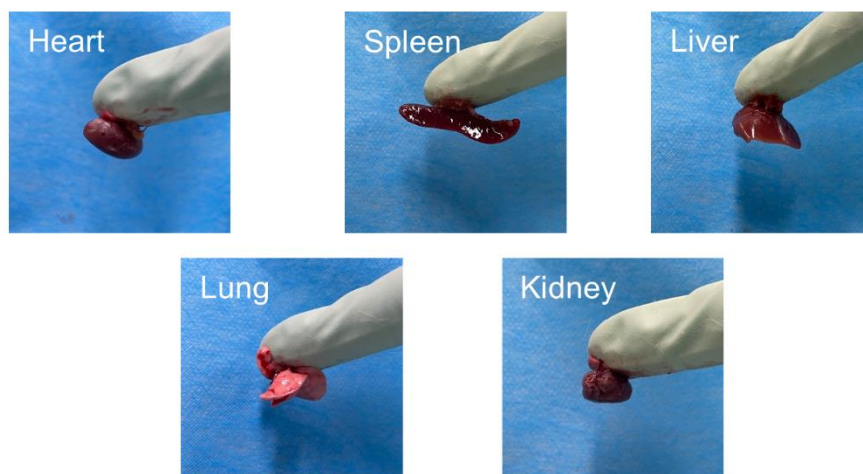


Figure S7. Adhesion capacity of major organs.

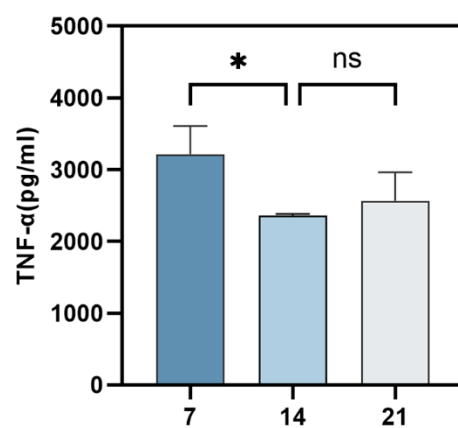


Figure S8. TNF-α content in vivo degradation assays

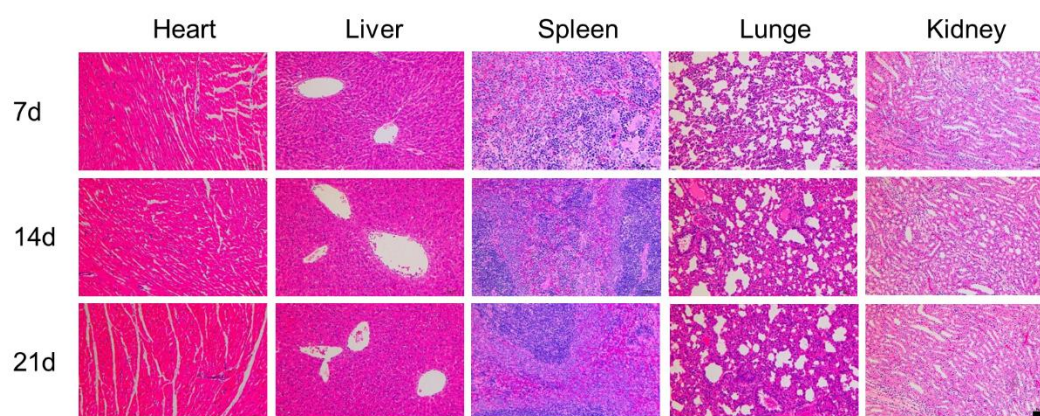


Figure S9. Pathological sections of major organs for in vivo degradation experiments. scale bar: 100μm

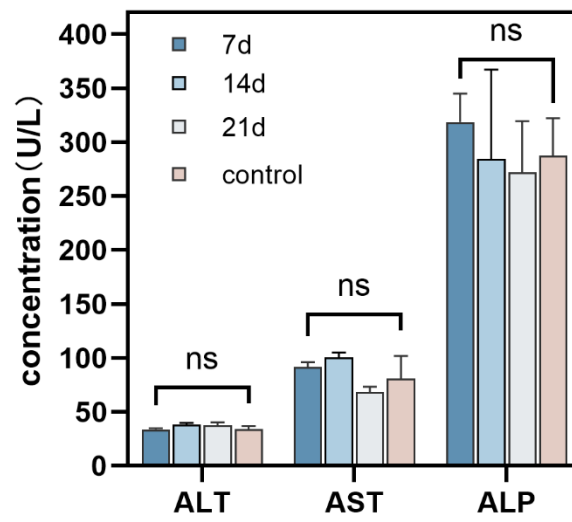


Figure S10. Blood biochemistry analysis of ALT, AST, and ALP.