

Figure supplementary materials



Fig. S1 Seedlings of *A. sinensis* (cultivar Mingui 1) with root-tip diameter 0.4-0.5 cm.



Fig. S2 Plantlets contained two leaves after 15 days.

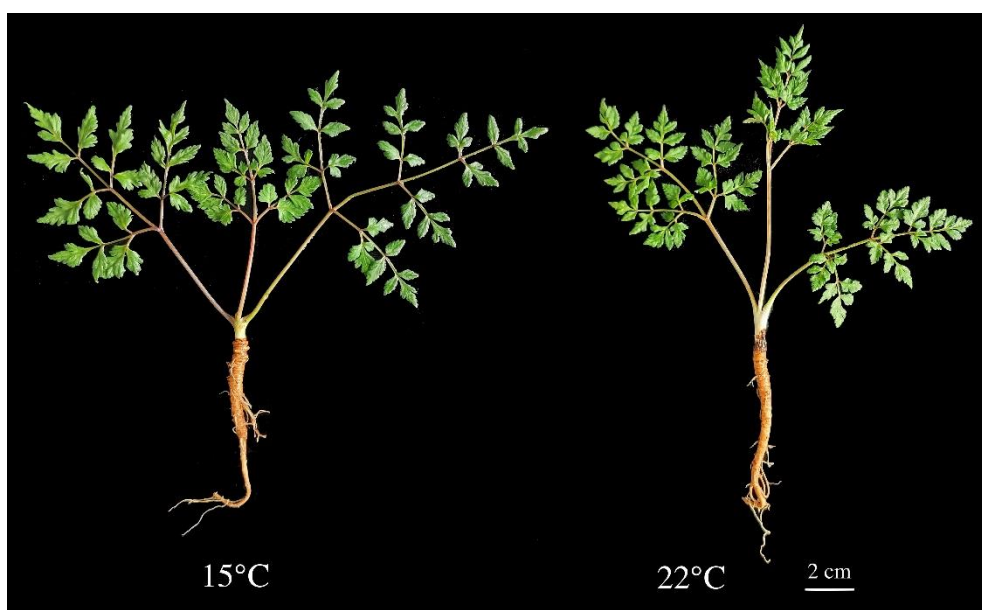


Fig. S3 Plants treated at 15 and 22°C after 30 days.

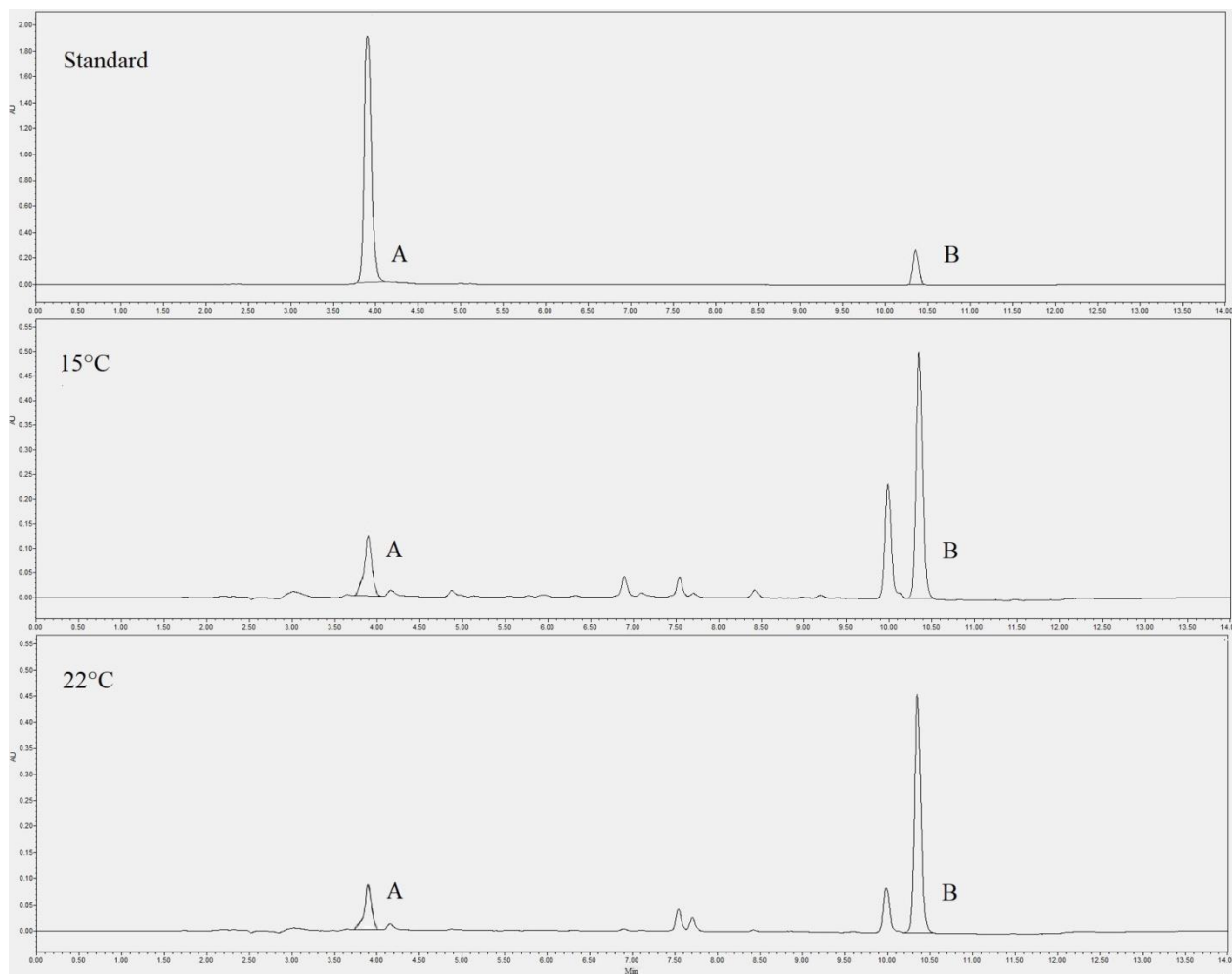


Fig. S4 Representative HPLC chromatograms of standard and samples at 15°C and 22°C. A and B represent ferulic acid and ligustilide.