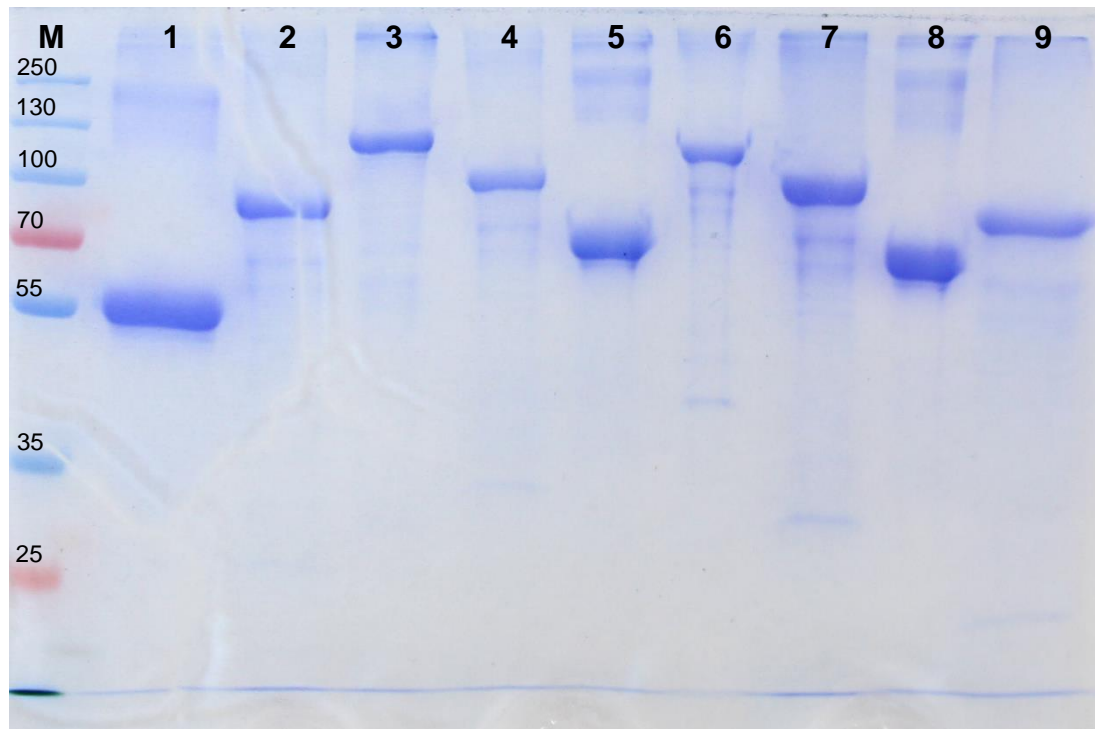


Gel A



Gel B

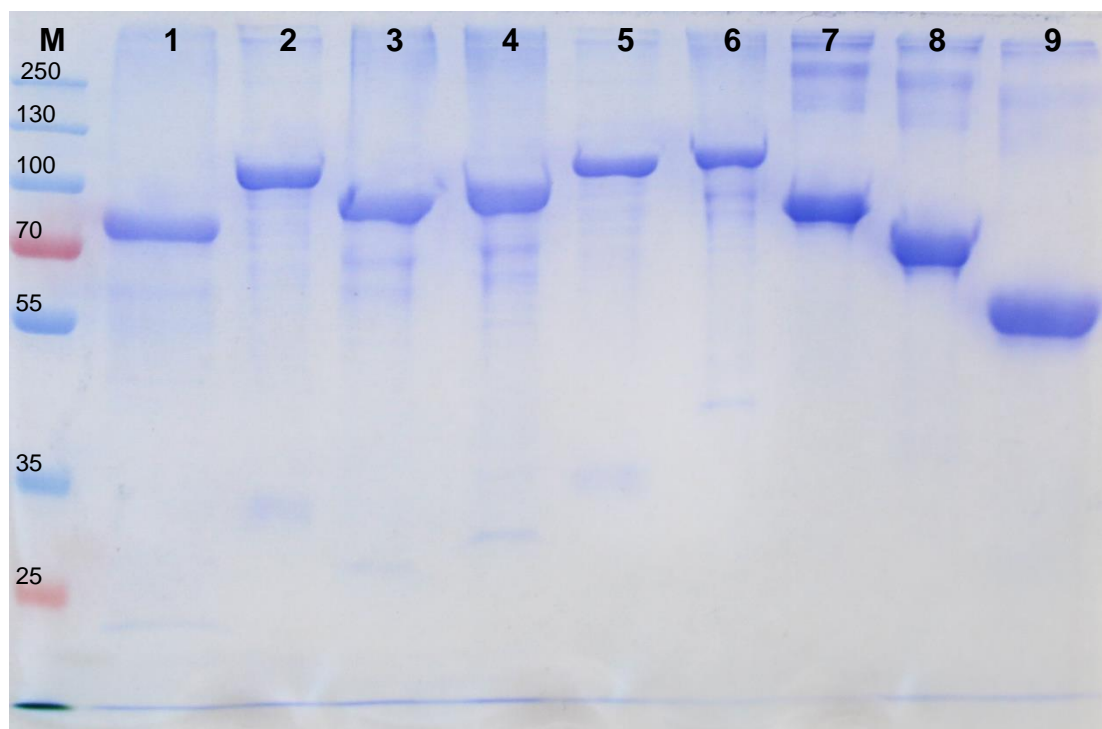


Figure S7. Coomassie blue-stained SDS-PAGE (10% polyacrylamide gel) separation of purified recombinant chimeric proteins.

Gel A lines:

M – PageRuler™ Plus Prestained Protein Ladder (Thermo Fisher Scientific, Waltham, MA, USA)

1 – SAG1-SAG2

2 – SAG1-SAG2-MAG1S

3 – SAG1-SAG2-MIC1

4 – SAG1-SAG2-GRA9

5 – SAG1-SAG2-P35S
6 – SAG1-SAG2-P35
7 – SAG1-SAG2-GRA7
8 – SAG1-SAG2-GRA2
9 – SAG1-SAG2-GRA1

Gel B lines:

M – PageRuler™ Plus Prestained Protein Ladder (Thermo Fisher Scientific, Waltham, MA, USA)

1 – SAG1-SAG2-GRA6
2 – SAG1-SAG2-MAG1
3 – SAG1-SAG2-ROP1
4 – SAG1-SAG2-LDH2
5 – SAG1-SAG2-AMA1S
6 – SAG1-SAG2-AMA1C
7 – SAG1-SAG2-MIC3
8 – SAG1-SAG2-MIC1ex2
9 – SAG1-SAG2-GRA5

Additionally, we attach uncropped photos of the gels.

