

SUPPLEMENTARY FIGURES

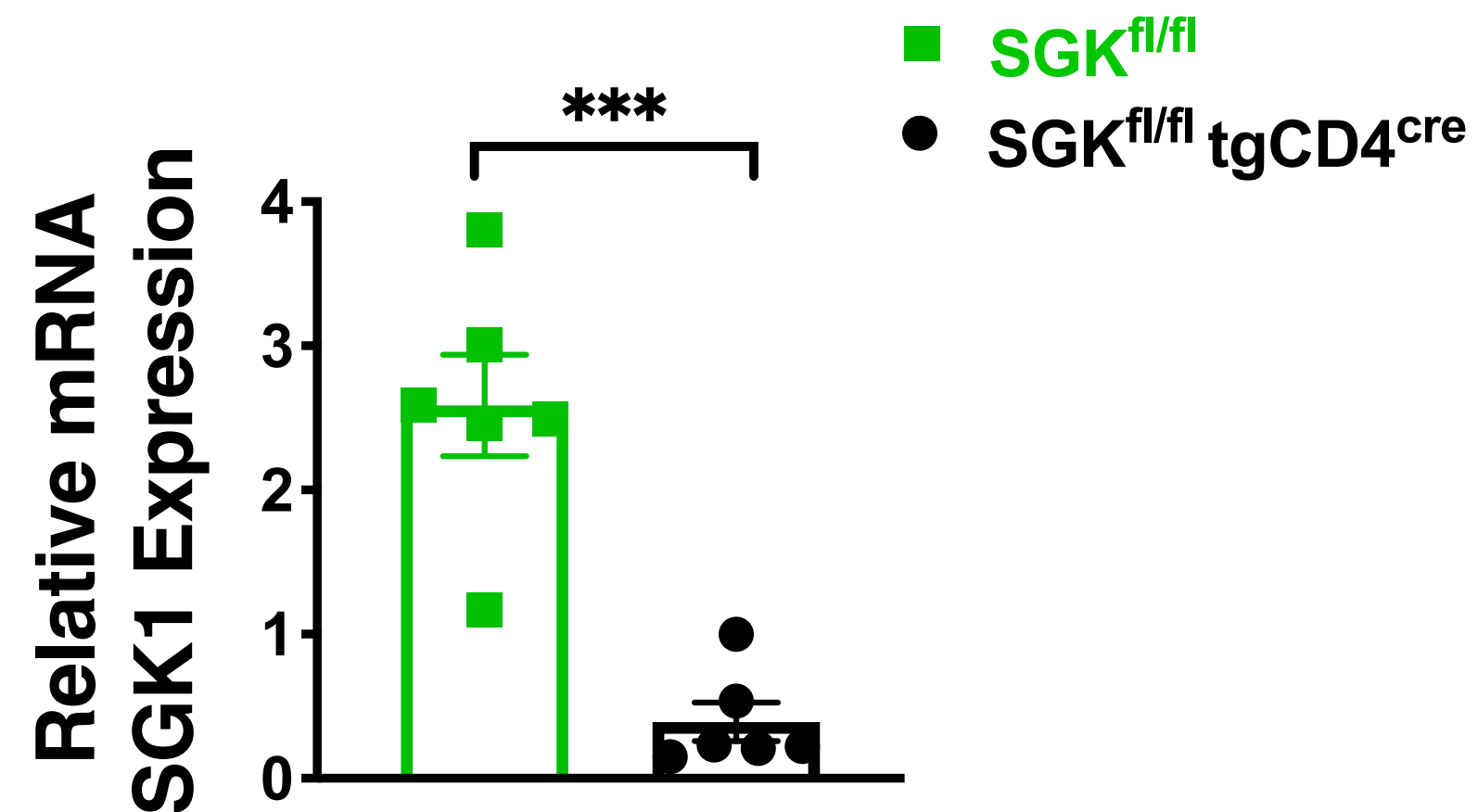


Figure S1. SGK1 expression in bone marrow T cells.

T cells were isolated from the bone marrow of $SGK1^{fl/fl}$ and $SGK1^{fl/fl}tgCD4^{cre}$ mice using a Miltenyi cell separation kit according to the manufacturer's instructions and a MACS magnetic cell sorter. SGK1 expression was then quantified by RT-qPCR (N=6). Data are expressed as mean \pm SEM, P-value calculated by independent t-test, *** $P < 0.001$.

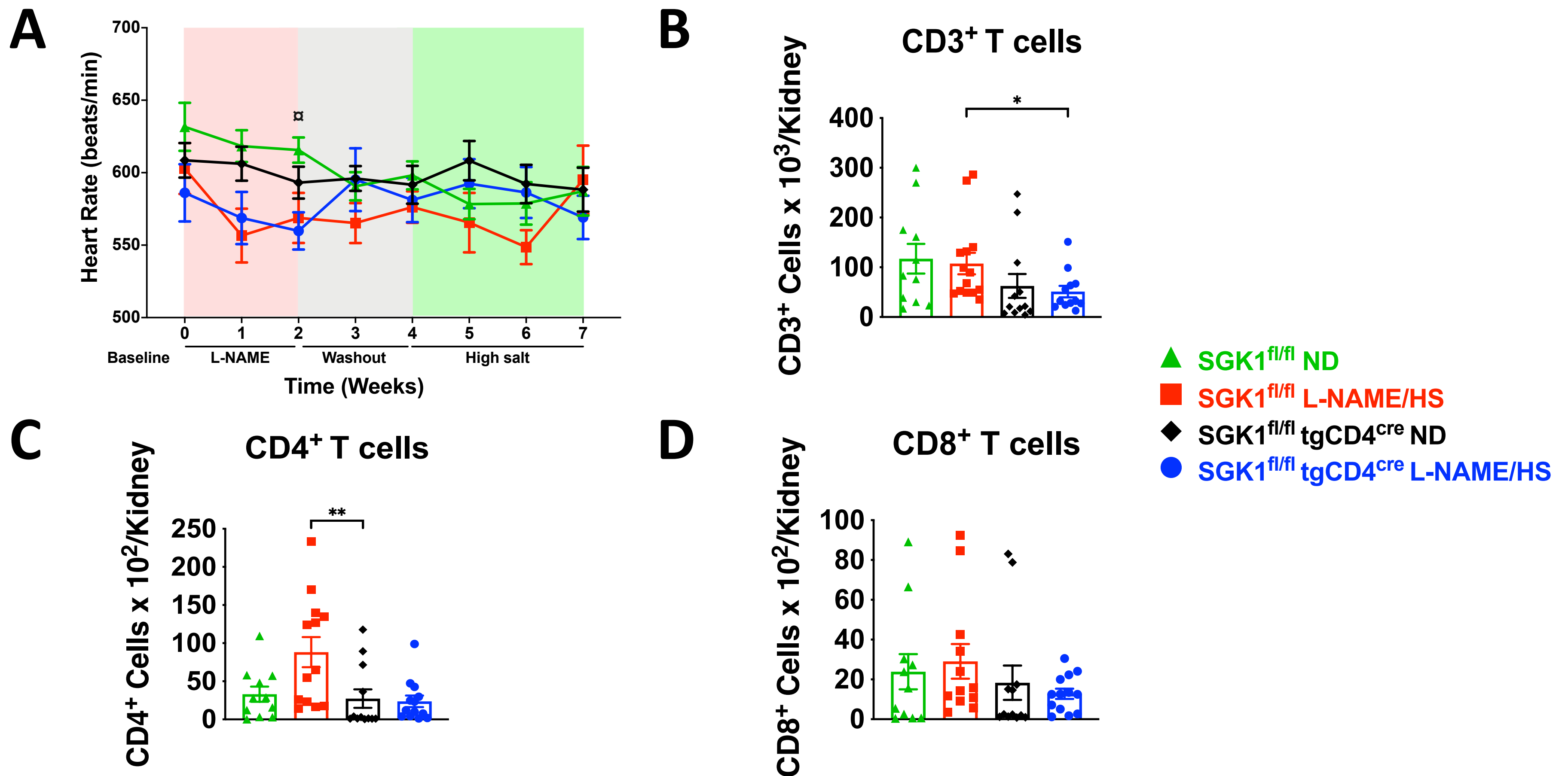


Figure S2. Differences in Heart rate and in total renal CD3⁺, CD4⁺ and CD8⁺ T lymphocytes.

(A) Heart rate measured noninvasively using the tail-cuff method (N=12 -15). Data are expressed as mean \pm SEM, and P-values calculated by multiple t-tests at each time point multiplied by the number of comparisons are shown. α P< 0.05 for SGK1^{fl/fl}tgCD4^{Cre} L-NAME/HS vs. SGK1^{fl/fl}tgCD4^{cre} ND mice; (B) CD3⁺ T lymphocytes; (C) CD4⁺ T lymphocytes; (D) CD8⁺ T lymphocytes (N=11-14). Data are expressed as mean \pm SEM, and P-values calculated by 2-way ANOVA are shown. *P<0.05, ** P< 0.01.