

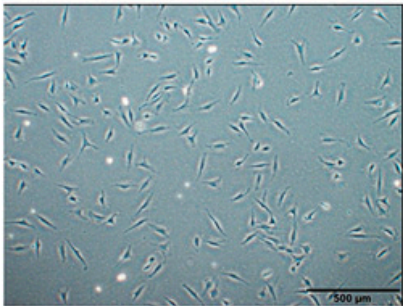
## **Supplementary Data**

### **Supplementary Figure Legend**

**Supplementary Figure S1.** Characteristics of AMM/I. (A) Microscopic view of AMM/I (passage 4). Bar: 500µm. (B) Representative FACS surface markers of AMM/I exhibiting MSC-specific cell surface markers. Black colour represents the isotype control and red colour represents the specific monoclonal antibody.

Supplementary Figure S1.

**A**



**B**

