

Table S1. Laboratory characteristics of patients and drug therapy

Parameters	MIOCA n = 155	MINOCA n= 114	p
Laboratory data			
Hemoglobin level, g/L	146 (134;155)	146 (135;155)	0.733
Platelets, 10 ⁹ /l	254 (215;300)	249 (212;286)	0.789
Cholesterol total	4.3 (4.5;5.8)	4.4 (3.6;6.2)	0.557
Creatinine, mkmol/l	82 (75;91)	81.5 (75;93)	0.702
Triglycerides, mmol/l	1.65 (1;2.3)	1.4(0.9;2.4)	0.307
Glucose, mmol/l	5.9 (5.2;7.1)	5.95 (5.2;7.2)	0.945
Drug therapy			
Acetylsalicylic acid, %	57.4	58.8	0.824
Other antiaggregant	29	28.9	0.987
Nitrates, %	8.4	7	0.679
ACE inhibitors, %	37.4	36.8	0.923
ARA, %	8.4	9.6	0.720
Beta-blockers, %	55.5	52.6	0.643
Calcium antagonists, %	5.8	6.1	0.909
Statins, %	54.2	53.5	0.911
Other lipid-lowering drugs	11	10.5	0.908

ACE – angiotensin-converting enzyme; ARA – angiotensin receptor antagonist.

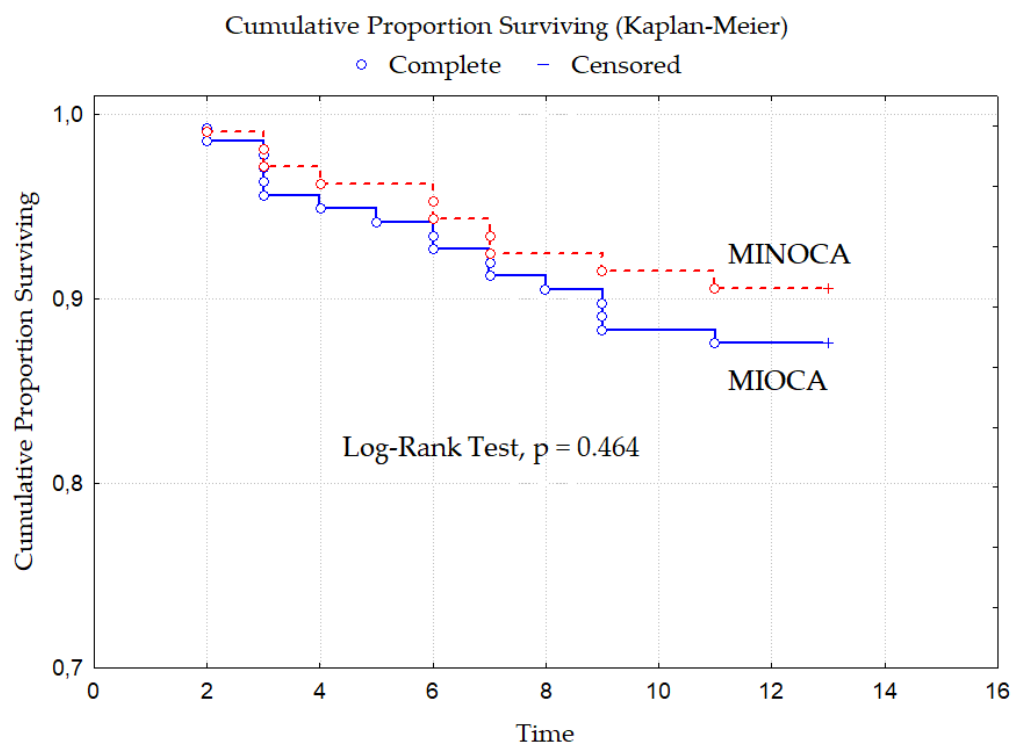
Figure S1. Kaplan–Meier survival and freedom from mortality.

Figure S2. Kaplan–Meier survival and freedom from MI.

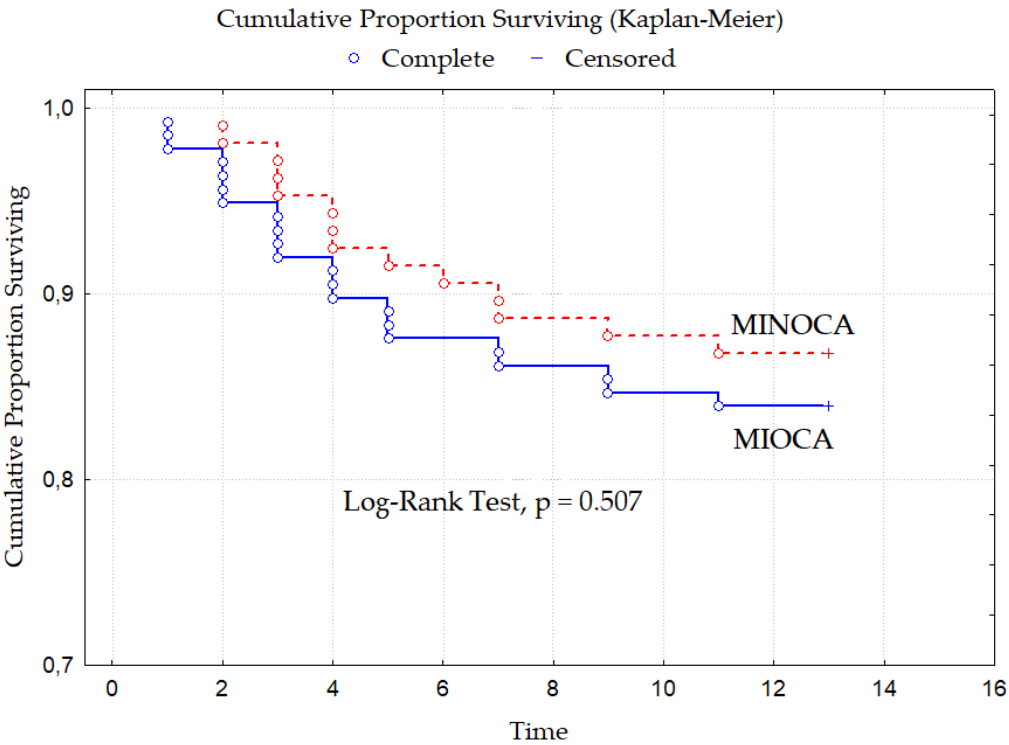


Figure S3. Kaplan–Meier survival and freedom from acute cerebrovascular incident/stroke.

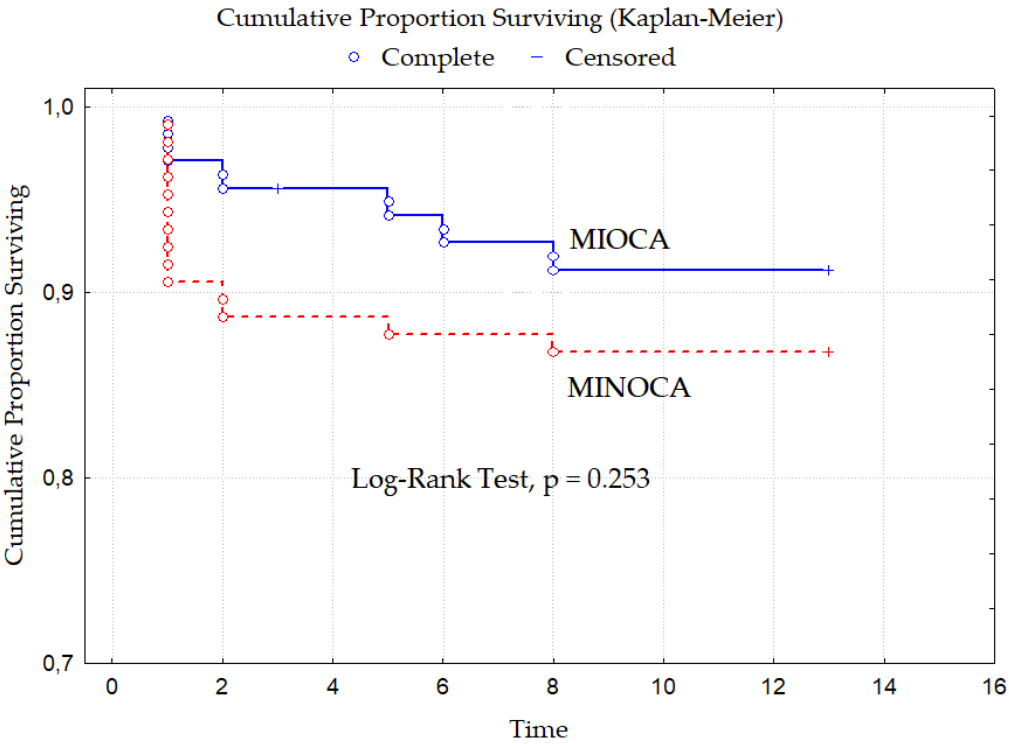


Figure S4. Kaplan–Meier survival and freedom from hospitalization.

