



Figure S1. Examples of raw electrocardiographic data. Subsequent RR intervals are indicated.

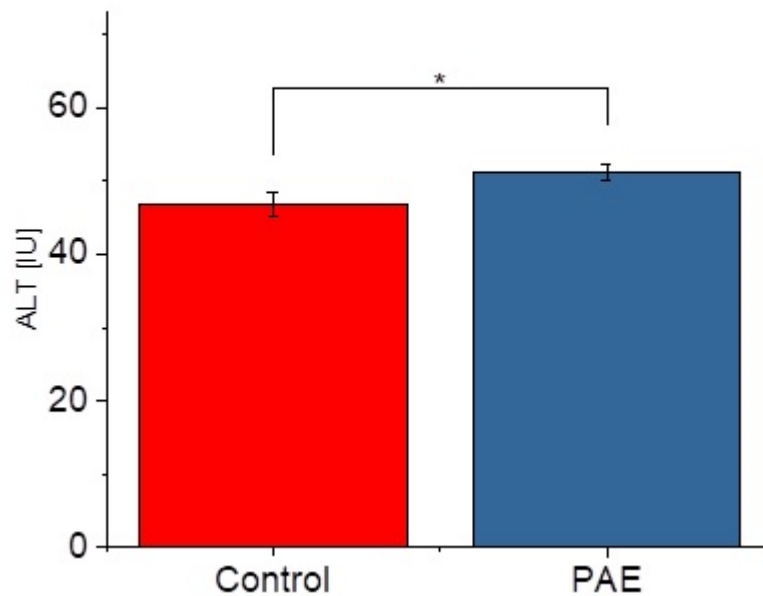


Figure S2. ALT, concerning group. Data are expressed as mean \pm standard error (SE). Groups: control rats received glucose p.o. during pregnancy; PAE rats received ethanol p.o. during pregnancy. * demonstrates a statistically significant difference ($p < 0.05$)

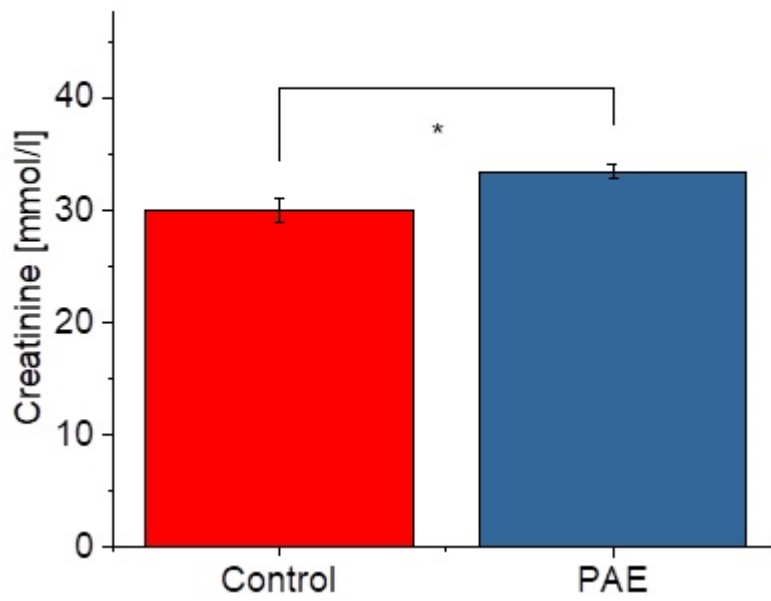


Figure S3. Creatinine, concerning group. Data are expressed as mean \pm standard error (SE). Groups: control rats received glucose p.o. during pregnancy; PAE rats received ethanol p.o. during pregnancy. * demonstrates a statistically significant difference ($p<0.05$)

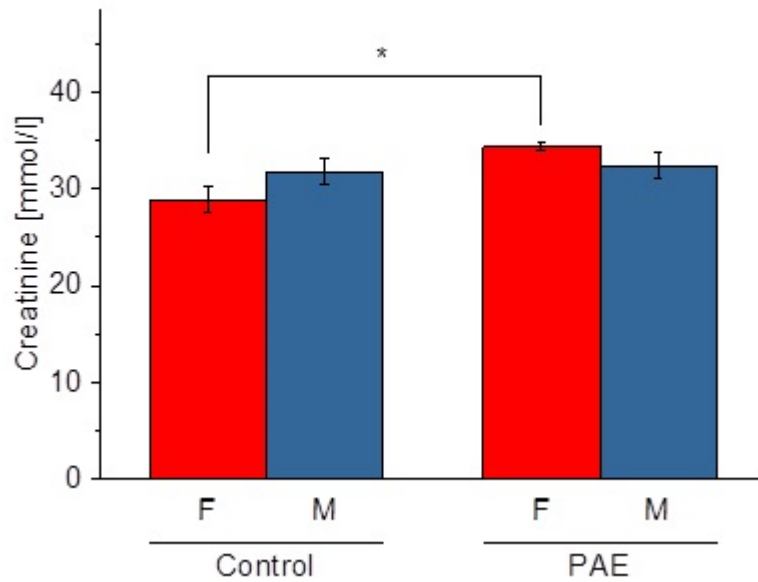


Figure S4 Creatinine, concerning group and sex. Data are expressed as mean \pm standard error (SE). Groups: control rats received glucose p.o. during pregnancy; PAE rats received ethanol p.o. during pregnancy; sex: F- female, M- male. * demonstrates statistically significant differences ($p<0.05$)

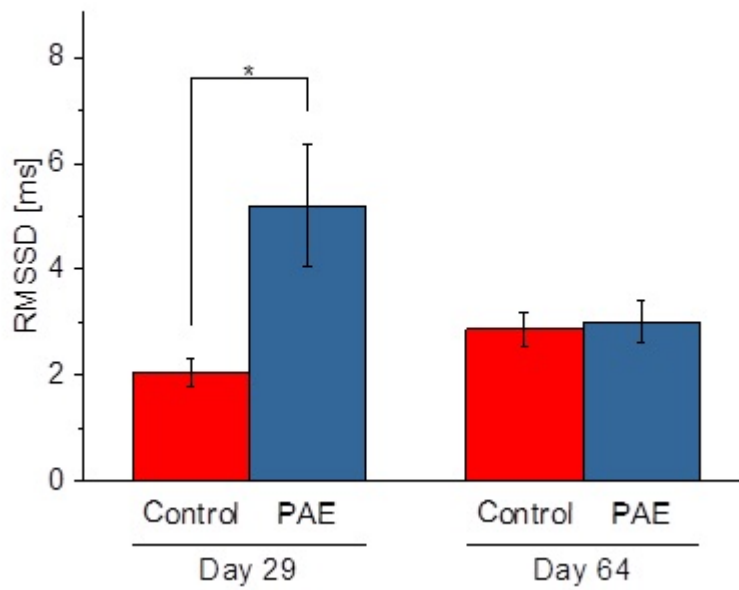


Figure S5. RMSSD, concerning day and group. Data are expressed as mean \pm standard error (SE). Groups: control rats received glucose p.o. during pregnancy; PAE rats received ethanol p.o. during pregnancy. * demonstrates statistically significant differences ($p < 0.05$)

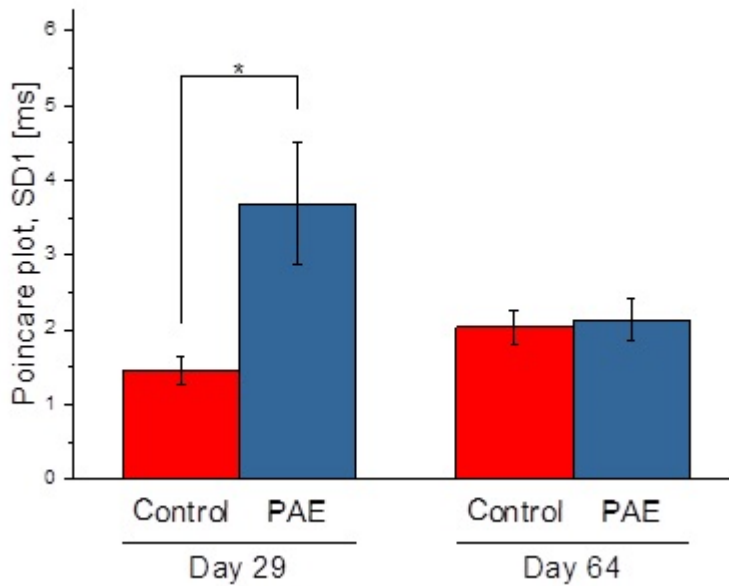


Figure S6. SD1, concerning day and group. Data are expressed as mean \pm standard error (SE). Groups: control rats received glucose p.o. during pregnancy; PAE rats received ethanol p.o. during pregnancy. * demonstrates statistically significant differences ($p < 0.05$)

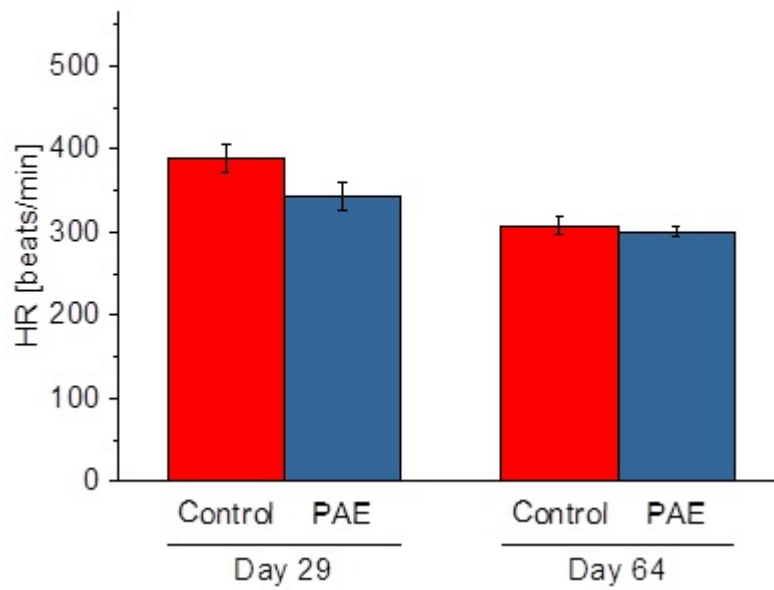


Figure S7. Heart rate, concerning day and group. Data are expressed as mean \pm standard error (SE). Groups: control rats received glucose p.o. during pregnancy; PAE rats received ethanol p.o. during pregnancy. * demonstrates statistically significant differences ($p < 0.05$)

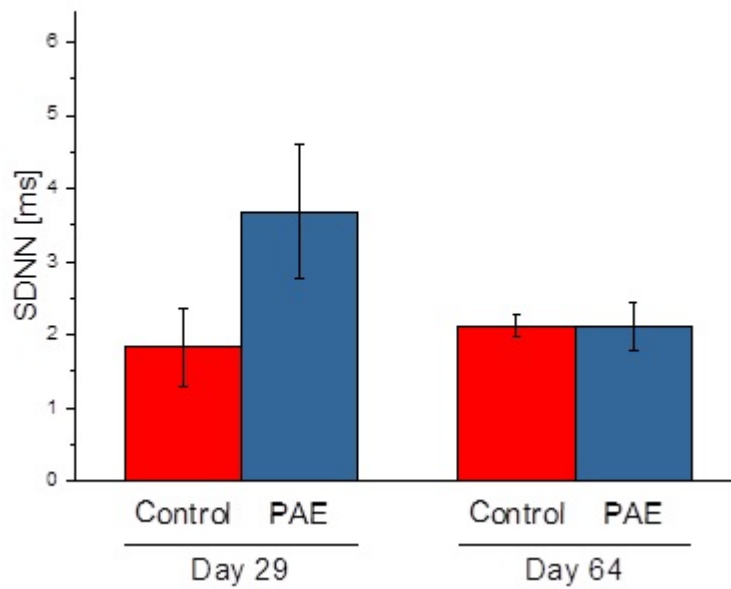


Figure S8. SDNN, concerning day and group. Data are expressed as mean \pm standard error (SE). Groups: control rats received glucose p.o. during pregnancy; PAE rats received ethanol p.o. during pregnancy. * demonstrates statistically significant differences ($p < 0.05$)

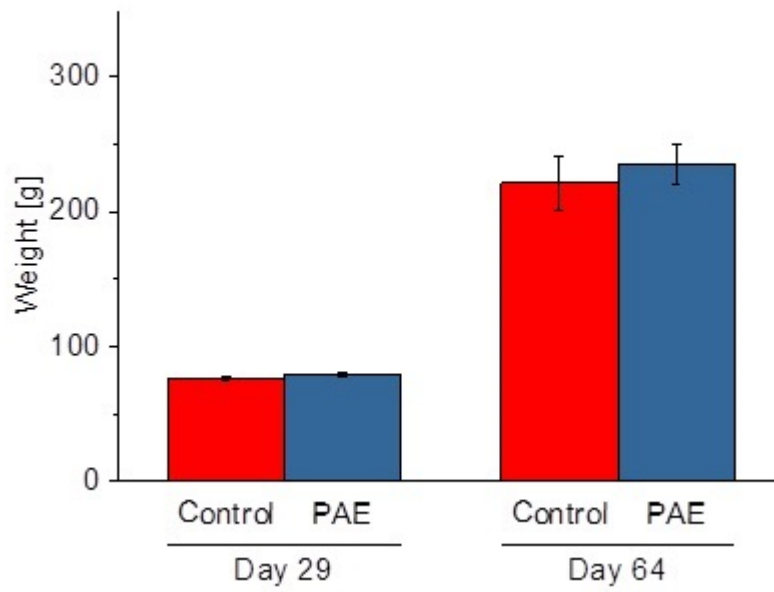


Figure S9. Weight, concerning day and group. Data are expressed as mean \pm standard error (SE). Groups: control rats received glucose p.o. during pregnancy; PAE rats received ethanol p.o. during pregnancy. * demonstrates statistically significant differences ($p < 0.05$)