

Supplementary material

Table S1. Formulations of study diets. CD = control diet, SFA-KD = ketogenic diet with saturated fatty acids, LA-KD = ketogenic diet with linoleic acid.

	CD TD.220115	SFA-KD TD.220117.PWD	LA-KD TD.220116.PWD
Ingredient	g/kg	g/kg	g/kg
Casein	100.0	180.0	180.0
DL-Methionine	1.6	2.88	2.88
Corn Starch	512.46	0	0
Sucrose	100.0	0	0
Maltodextrin	155.0	0	0
Vegetable Shortening	25.0	0	590.0
Safflower Oil	25.0	0	85.0
Cellulose	44.648	70.206	70.164
Mineral Mix, w/o Ca & P (98057)	13.4	24.8	24.8
Calcium Phosphate, dibasic	10.1	18.6	18.6
Calcium Carbonate	5.0	9.4	9.4
Vitamin Mix, w/o choline, A, D, E (83171)	5.0	13.875	13.875
Choline Bitartrate	2.5	4.625	4.625
Vitamin E, DL-alpha tocopheryl acetate (500 IU/g)	0.225	0.41	0.41
Vitamin A, palmitate (500,000 IU/g)	0.027	0.008	0.05
Vitamin D3, cholecalciferol (50,000 IU/g in sucrose)	0.03	0.056	0.056
TBHQ, antioxidant	0.01		0.14
Anhydrous Milkfat		675.0	
Ethoxyquin, antioxidant		0.14	

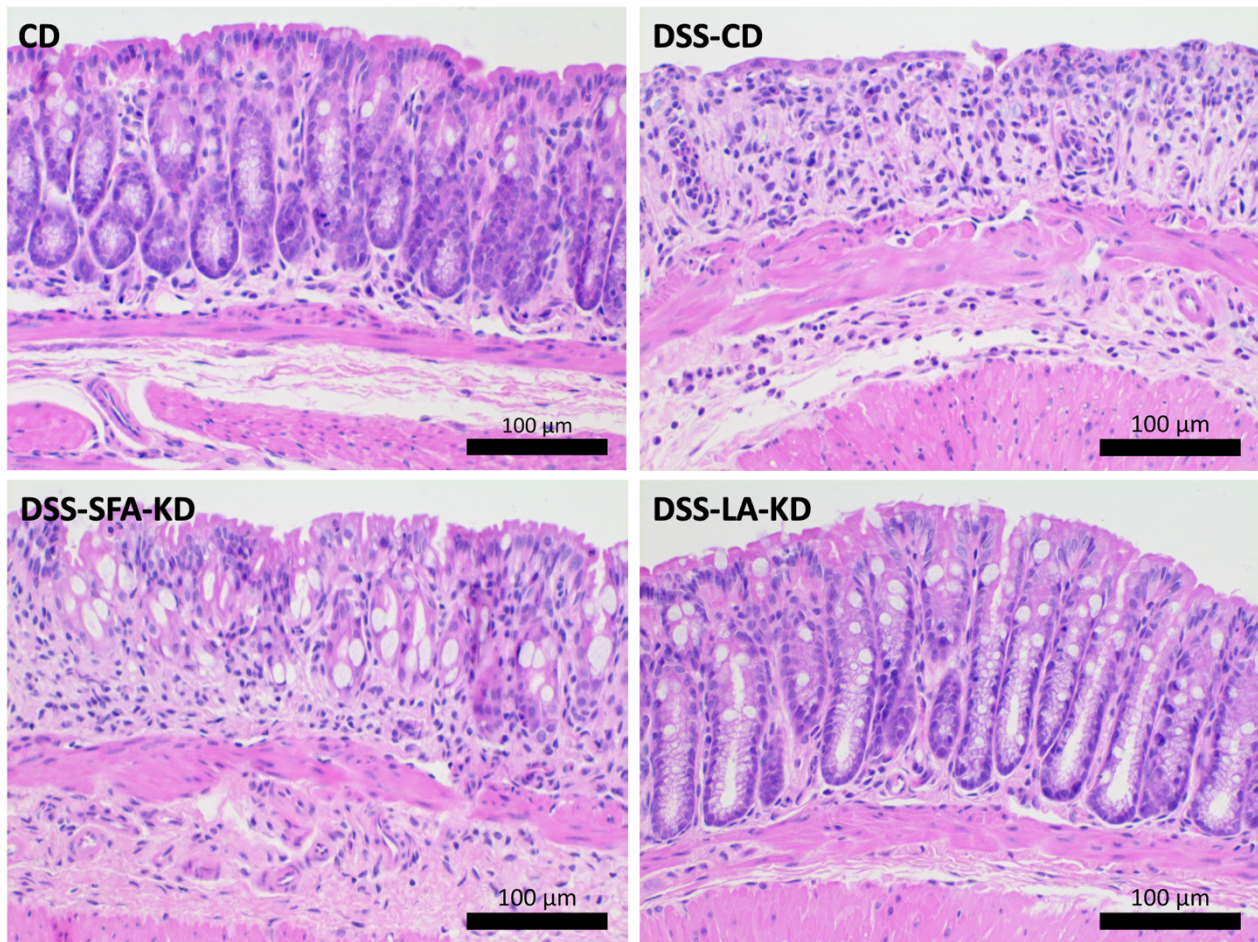
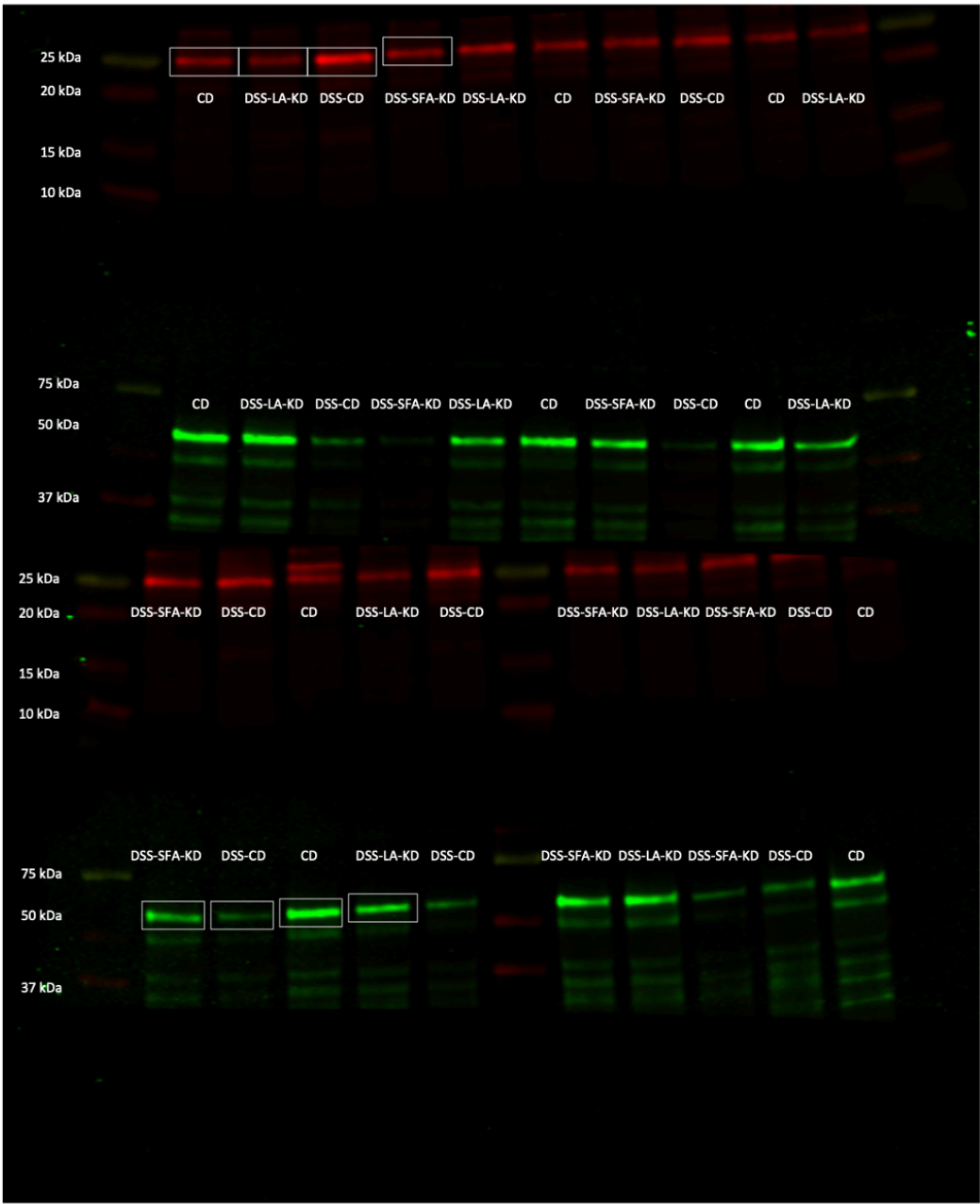


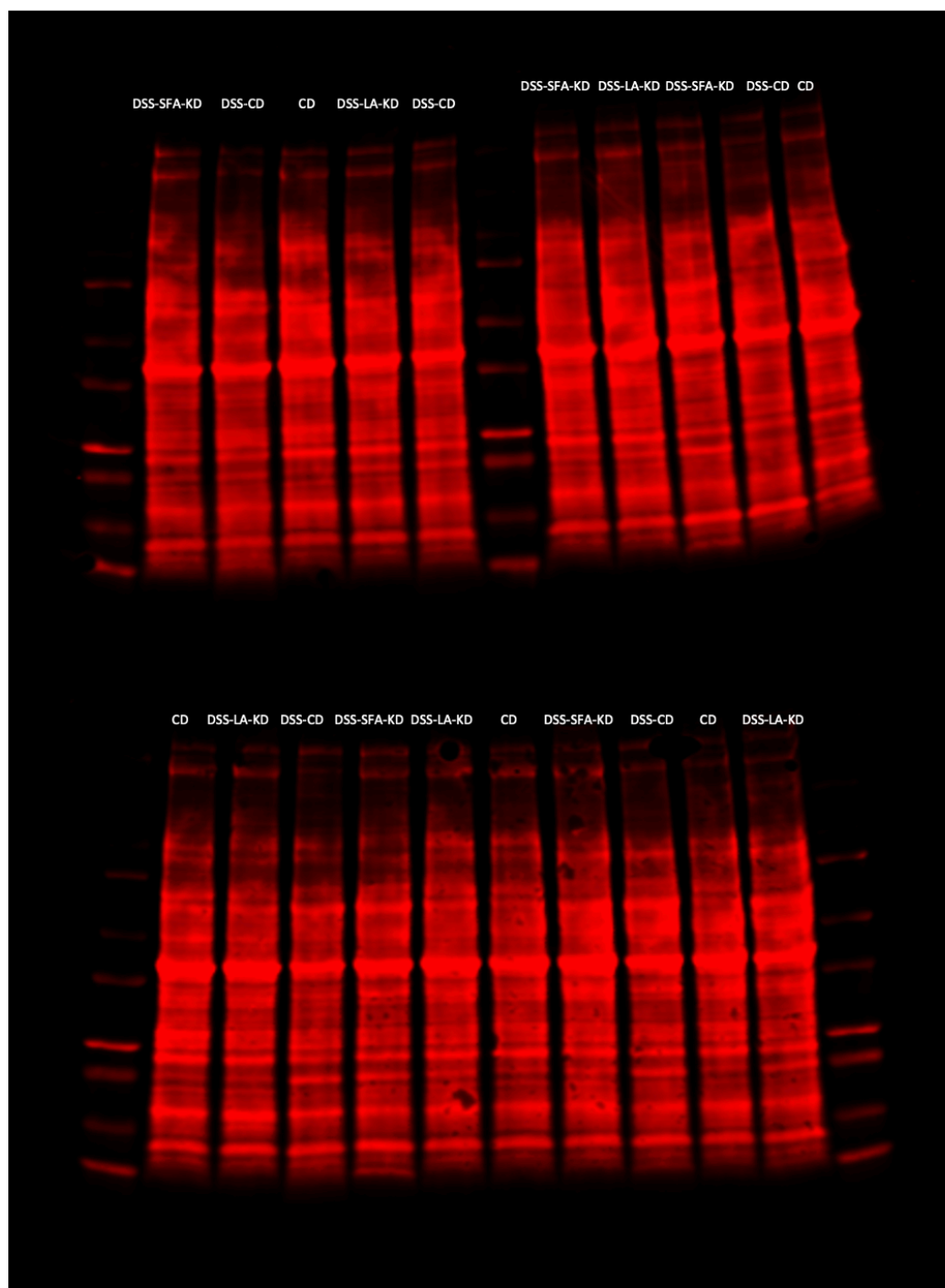
Figure S1. Original microphotographs of HE-stained colon sections. CD = healthy group with control diet, DSS-CD = DSS group with control diet, DSS-LA-KD = DSS group with diet high in linoleic acid, DSS-SFA-KD = DSS group with diet high in saturated fatty acids, HE = hematoxylin and eosin.

A

Claudin-1 and occludin

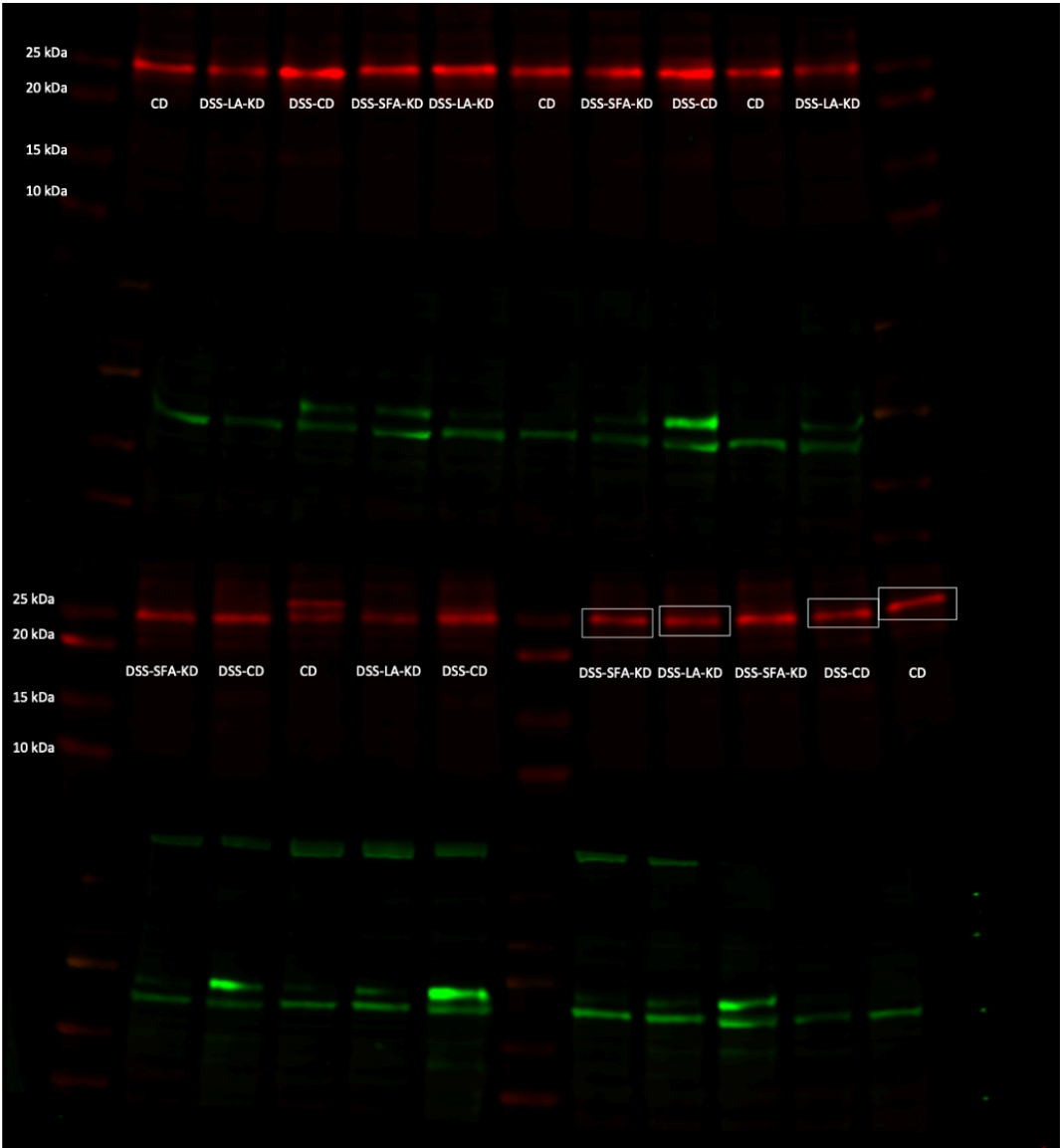


Total protein for claudin-1 and occludin

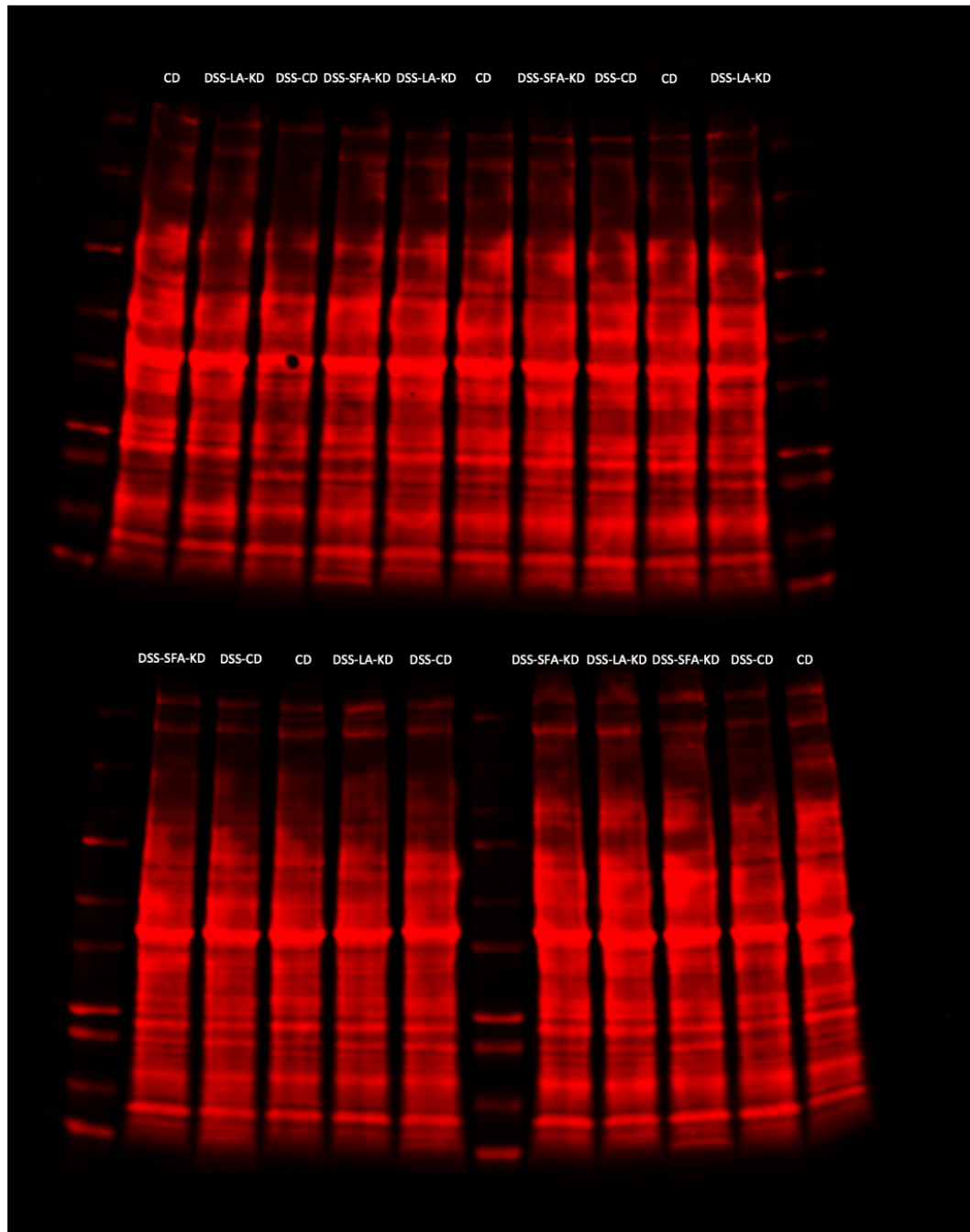


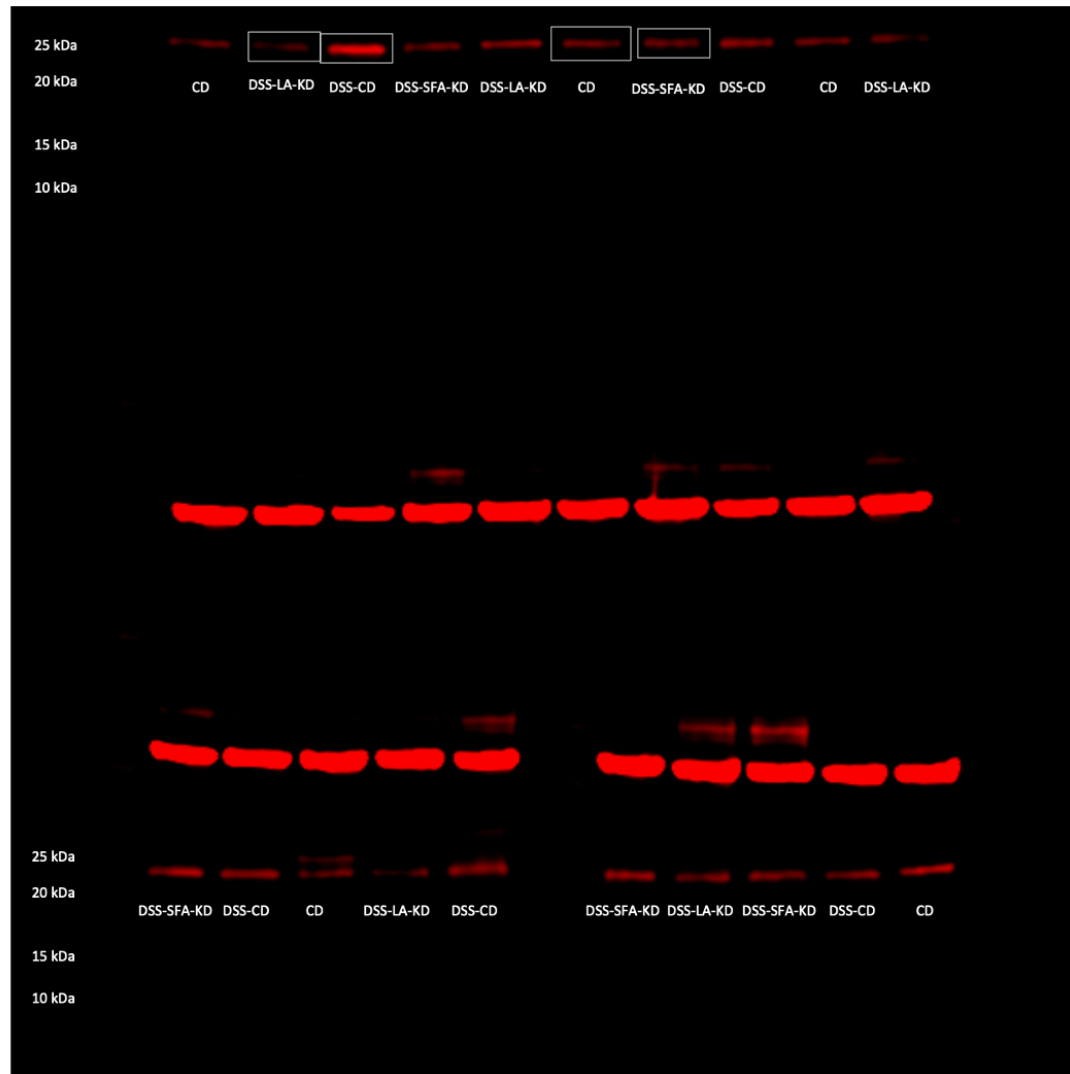
B

Claudin-2



Total protein for claudin-2



C**Claudin-4**

Total protein for claudin-4

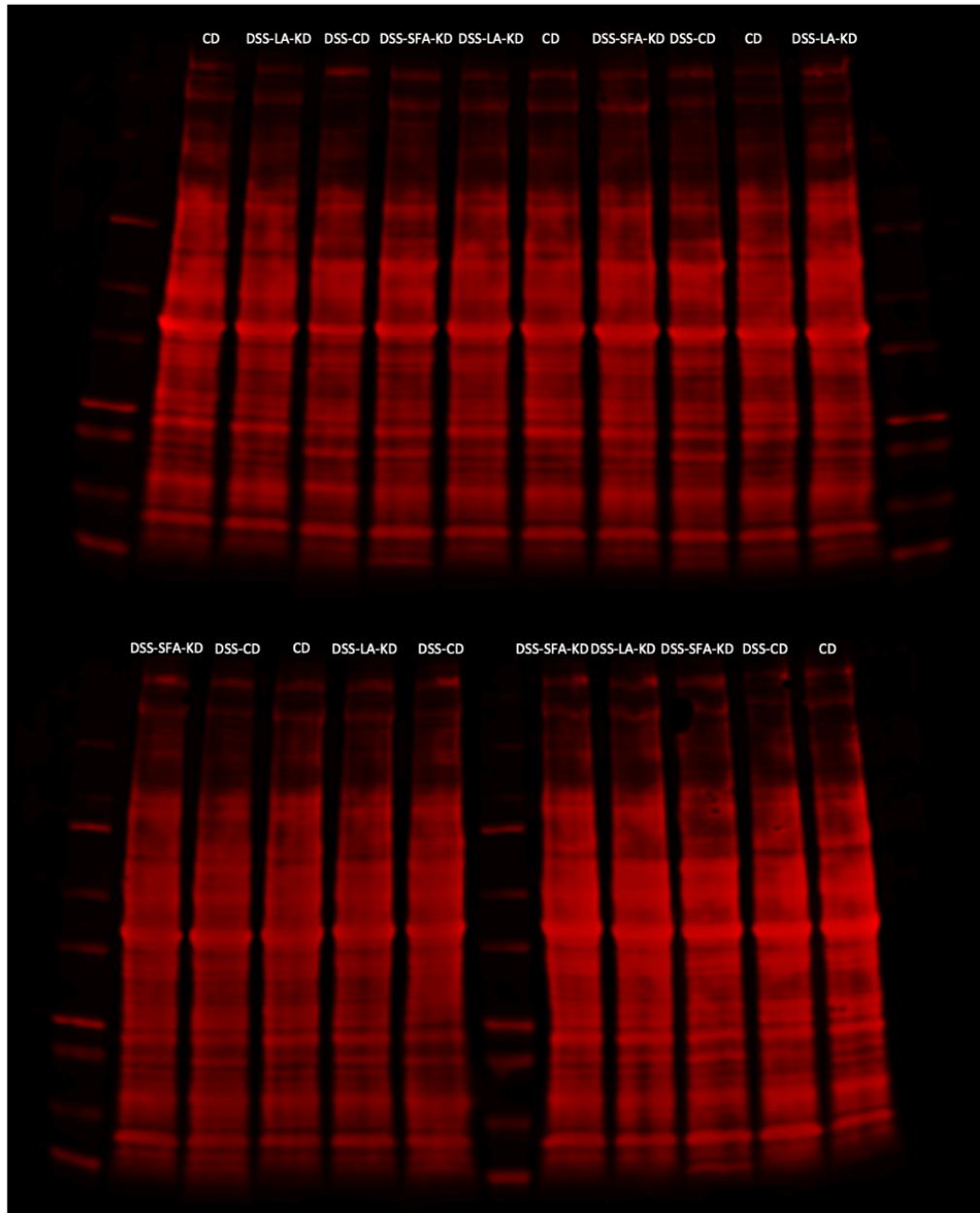


Figure S2. Original and unmodified Western Blot images of colonic tight junction proteins. A. Claudin-1 and occludin, B. claudin-2, C. claudin-4 and total protein. The bands presented in the manuscript are circled. CD = healthy group with control diet, DSS-CD = DSS group with control diet, DSS-LA-KD = DSS group with diet high in linoleic acid, DSS-SFA-KD = DSS group with diet high in saturated fatty acids.