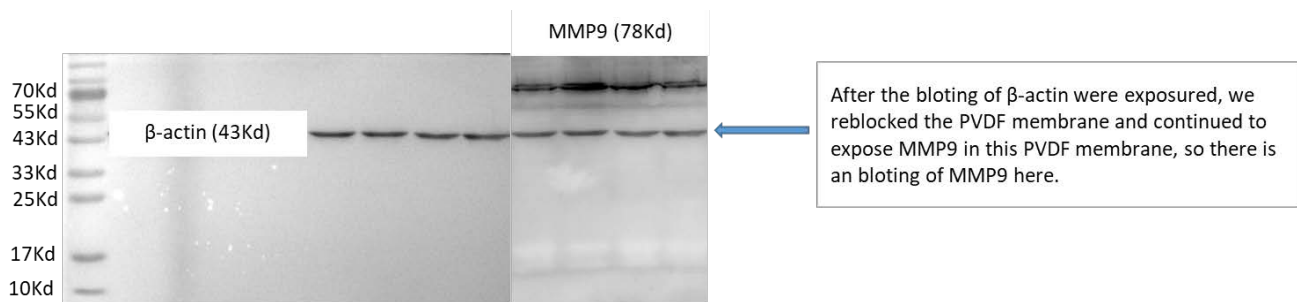


1. Figure S1: Western blot of MMP9 in MDA-MB-231-S, MDA-MB-231-R, MDA-MB-231-S^{ovESM1} and MDA-MB-231-R^{shESM1} cells in Figure 3j

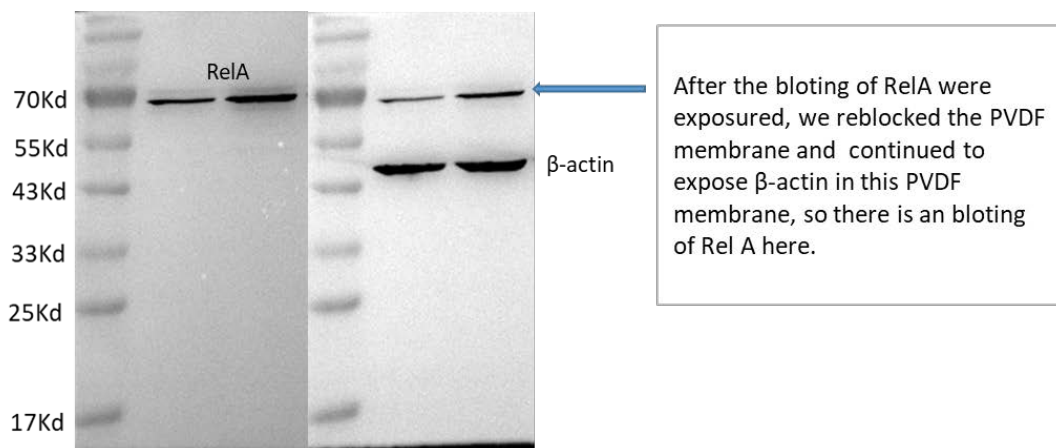
Loading order (left to right):

MDA-MB-231-S, MDA-MB-231-S^{ovESM1}, MDA-MB-231-R, and MDA-MB-231-R^{shESM1}



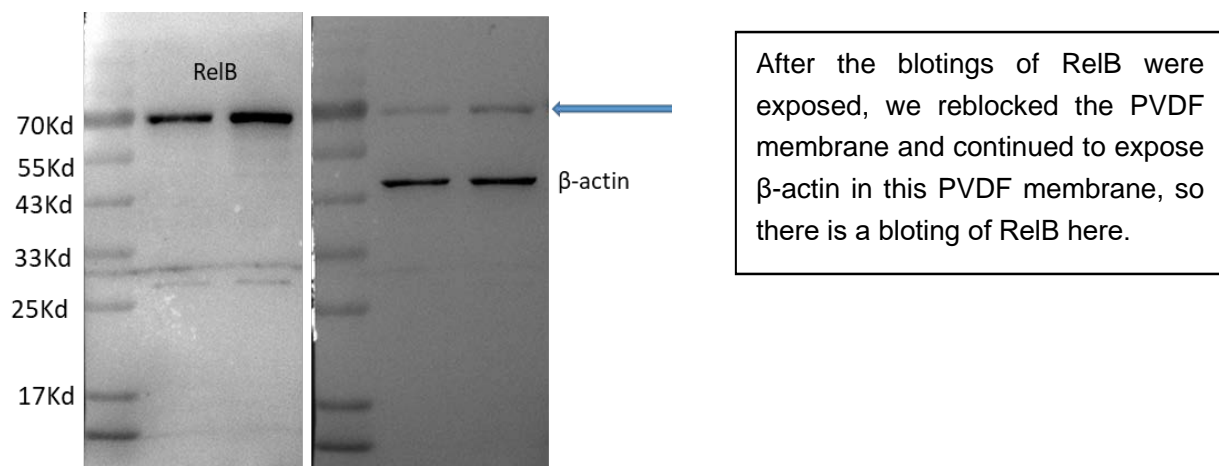
2. Figure S2: RelA or RelB was overexpressed in MDA-MB-231-S cells and detected by western blotting in Figure 4c:

Loading order (left to right): MDA-MB-231-S, MDA-MB-231-S^{ovRelA}



Loading order (left to right):

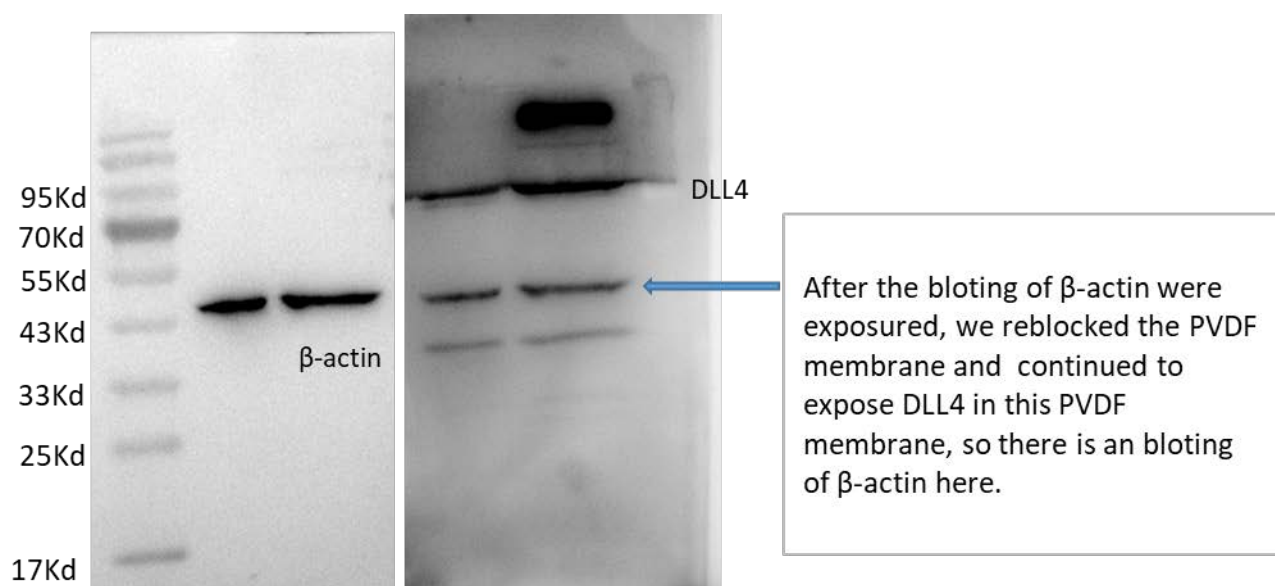
MDA-MB-231-S, MDA-MB-231-S^{ovRelB}



3. Figure S3: Western blotting for DLL4 in HUVEC cells with or without human ESM1 added in Figure 6c:

Loading order (left to right):

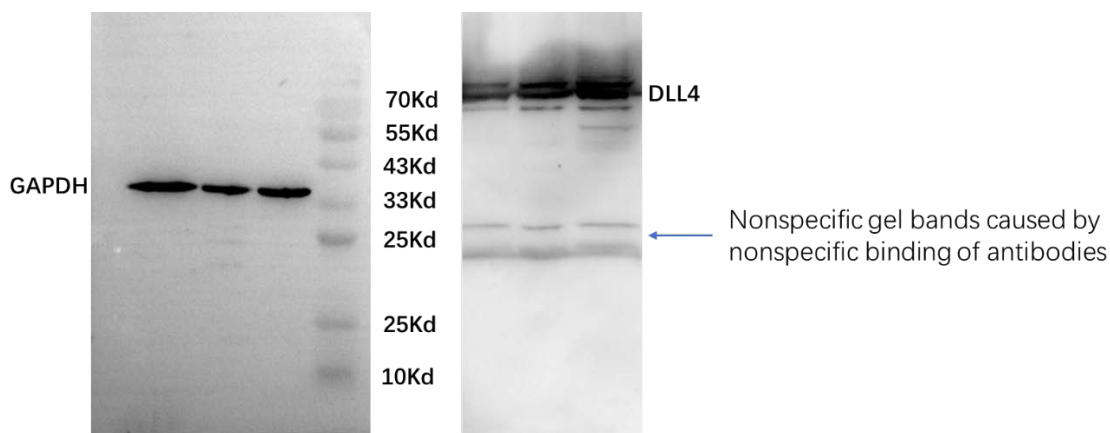
HUVEC, HUVEC-ESM1



4. Figure S4: Western blotting for DLL4 in MDA-MB-231-S, MDA-MB-231-S^{ovESM1}, MDA-MB-231-R in Figure 6d:

Loading order (left to right):

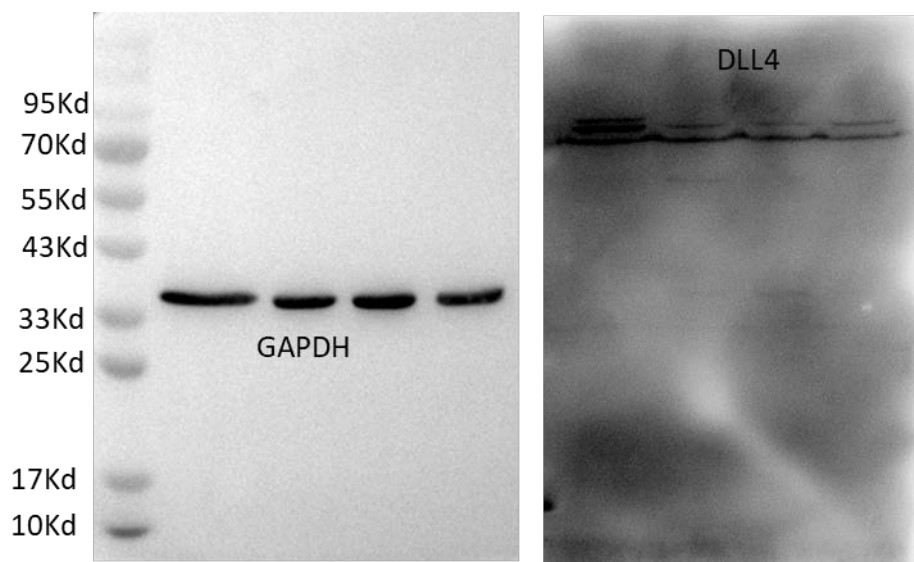
MDA-MB-231-S, MDA-MB-231-S^{ovESM1}, MDA-MB-231-R



5. Figure S5: Western blotting for DLL4 in MDA-MB-231-R and MDA-MB-231-R^{shESM1#1-3} in Figure 6e:

Loading order (left to right):

MDA-MB-231-R, MDA-MB-231-R^{shESM1#1}, MDA-MB-231-R^{shESM1#2}, MDA-MB-231-R^{shESM1#3}



6. Figure S6: Western blotting for analyzing the expression of ESM1 deleted or not by the Crispr-Cas9 system in MDA-MB-231-R cells in Figure 7a:

Loading order (left to right):

MDA-MB-231-R, MDA-MB-231-R^{ESM1ko}

