

Supplementary Information

Article

Synaptotagmin 1 Suppresses Colorectal Cancer Metastasis by Inhibiting ERK/MAPK Signaling-Mediated Tumor Cell Pseudopodial Formation and Migration

Jian-Yun Shi ^{1,†}, Wen-Jing Li ^{1,†}, Zhen-Hua Jia ¹, Ying Peng ¹, Jia-Yi Hou ², Ning Li ³, Rui-Juan Meng ⁴, Wei Fu ⁴, Yan-Lin Feng ¹, Li-Fei Wu ¹, Lan Zhou ¹, De-Ping Wang ¹, Jing Shen ¹, Jia-Song Chang ¹, Yan-Qiang Wang ^{5,*} and Ji-Min Cao ^{1,*}

¹ Key Laboratory of Cellular Physiology at Shanxi Medical University, Ministry of Education, and the Department of Physiology, Shanxi Medical University, Taiyuan 030606, China; shijianyun@sxmu.edu.cn (J.-Y.S.); liwenjing2@sxmu.edu.cn (W.-J.L.); jiazhenhua@sxmu.edu.cn (Z.-H.J.); pengying2@sxmu.edu.cn (Y.P.); feng@sxmu.edu.cn (Y.-L.F.); lifeiwu891002@sxmu.edu.cn (L.-F.W.); zhoulun@sxmu.edu.cn (L.Z.); wangdeping@sxmu.edu.cn (D.-P.W.); shenjing11@sxmu.edu.cn (J.S.); changjiasong@sxmu.edu.cn (J.-S.C.)

² Department of Clinical Laboratory, Shanxi Provincial Academy of Traditional Chinese Medicine, Taiyuan 030071, China; youhoujiayi0103@126.com

³ Department of Gastrointestinal and Pancreatic Surgery & Hernia and Abdominal Surgery, Shanxi Provincial People's Hospital, Taiyuan 030045, China; lining205310@126.com

⁴ Department of Radiology, The First Hospital of Shanxi Medical University, Shanxi Medical University, Taiyuan 030606, China; mrj0601@163.com (R.-J.M.); fuwei001@163.com (W.F.)

⁵ Translational Medicine Research Center, Shanxi Medical University, Taiyuan 030606, China

* Correspondence: yqwang15@sxmu.edu.cn (Y.-Q.W.); caojimin@sxmu.edu.cn (J.-M.C.)

† These authors contributed equally to this work.

Table S1. Results of Cox regression analysis.

Characteristics	Total(N)	Univariate analysis		Multivariate analysis	
		Hazard ratio (95% CI)	P value	Hazard ratio (95% CI)	P value
T stage	640				
T1&T2	131	Reference			
T3&T4	509	2.468 (1.327-4.589)	0.004	1.926 (0.810-4.577)	0.138
N stage	520				
N0	367	Reference			
N1	153	1.803 (1.149-2.829)	0.010	0.768 (0.368-1.604)	0.482
M stage	563				
M0	474	Reference			
M1	89	3.989 (2.684-5.929)	<0.001	5.384 (2.477-11.699)	<0.001
Age	643				
≤65	276	Reference			
>65	367	1.939 (1.320-2.849)	<0.001	2.499 (1.355-4.607)	0.003
Gender	643				
Female	301	Reference			
Male	342	1.054 (0.744-1.491)	0.769		
Lymphatic invasion	581				
No	349	Reference			
Yes	232	2.144 (1.476-3.114)	<0.001	1.763 (1.010-3.076)	0.046
SYT1	643				
Low	321	Reference			
High	322	1.487 (1.045-2.115)	0.027	1.940 (1.112-3.384)	0.020

Table S2. Sources of antibodies used in this study.

Antibodies	Manufacturer
SYT1	CST, 14558S, Rabbit, USA
GAPDH	Beyotime, AF0006, Mouse, CHN
Beta-Tubulin	Affinity, T0023, Mouse, USA
Slug	CST, 9585T, Rabbit, USA
Vimentin	CST, 5741T, Rabbit, USA
ERK1/2	CST, 4695T, Rabbit, USA
p-ERK1/2	CST, 4370T, Rabbit, USA
Ki67	CST, 9449S, Mouse, USA
PCNA	CST, 2586T, Mouse, USA

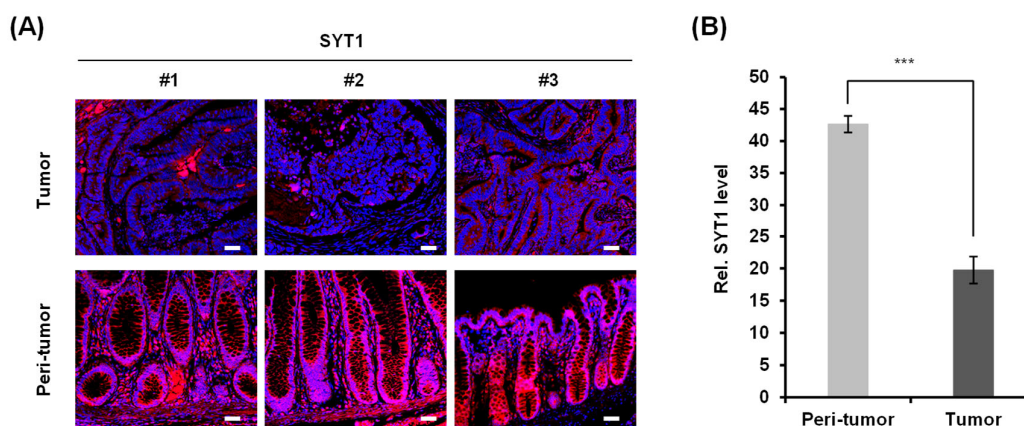


Figure S1. SYT1 suppressed the progression of CRC. (A) Three representative images of immunofluorescence analysis of SYT1 protein in three pairs of CRC tissues and peri-tumor. (B) Statistical analysis of all 15 pairs of samples was calculated. * $p < 0.05$, ** $p < 0.01$, *** $p < 0.001$. Scale bar, 50 μm .

Figure 1

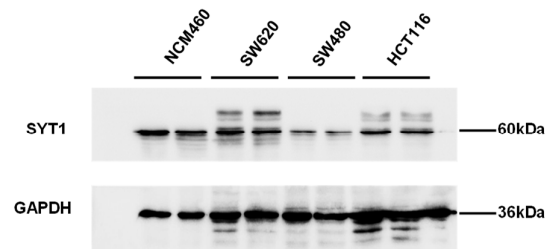


Figure 2

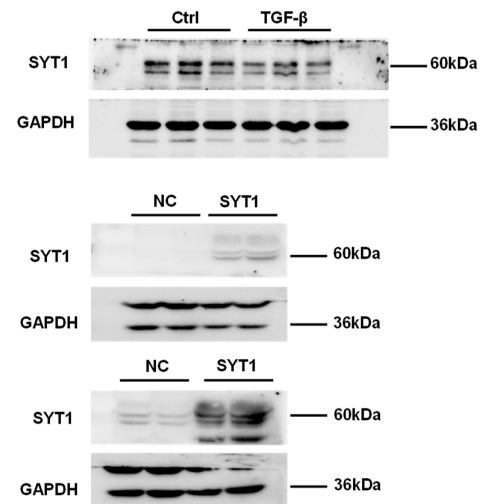


Figure 5

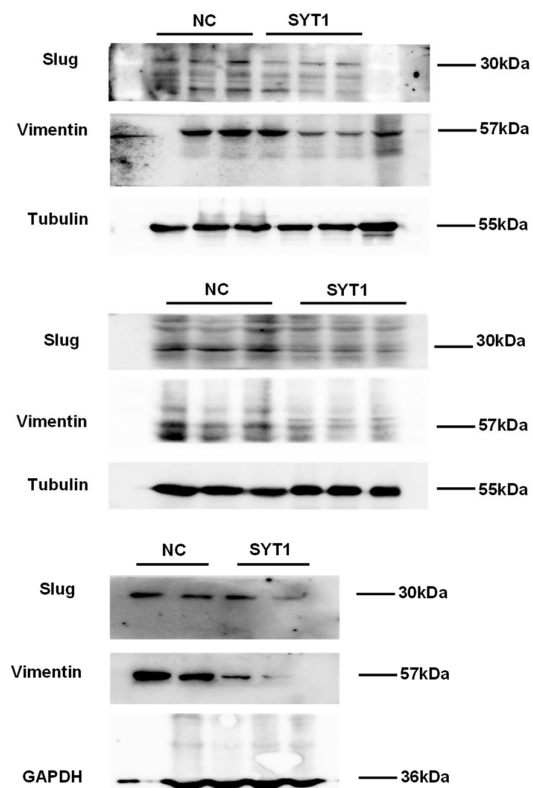


Figure 6

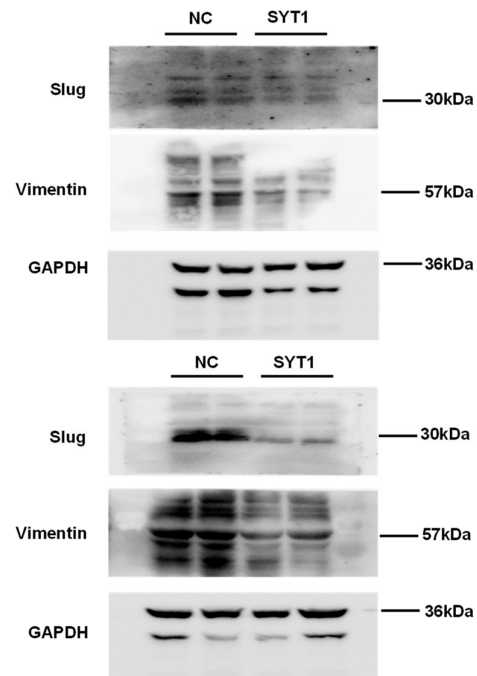


Figure 7

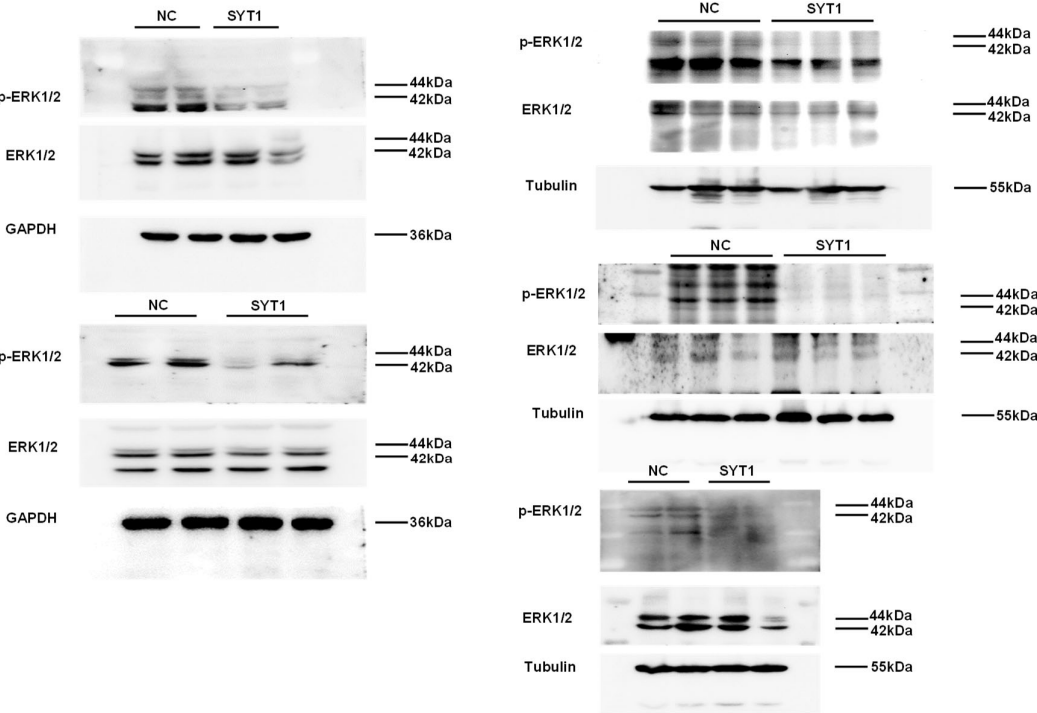


Figure 8

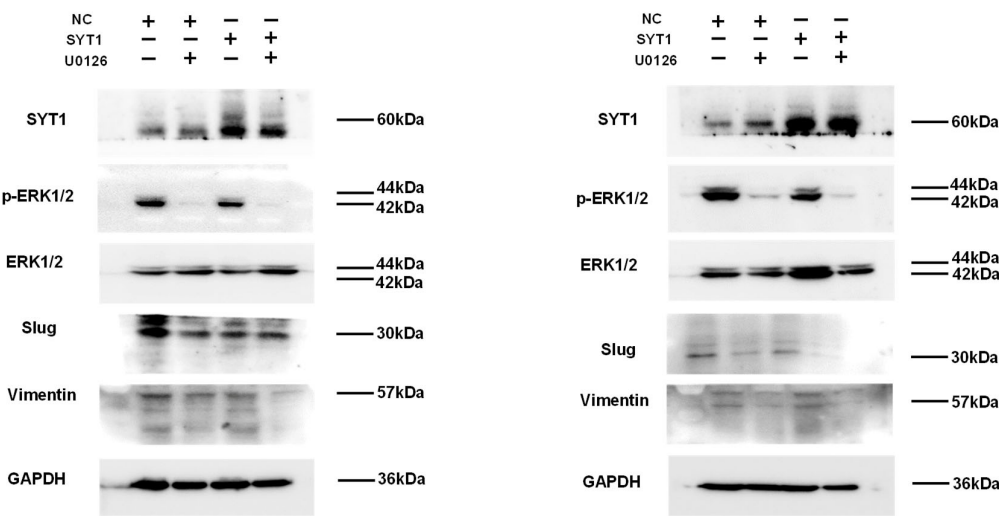


Figure S2. Original blots for Figures 1-8.