

PDE3A is a highly expressed therapy target in myxoid liposarcoma

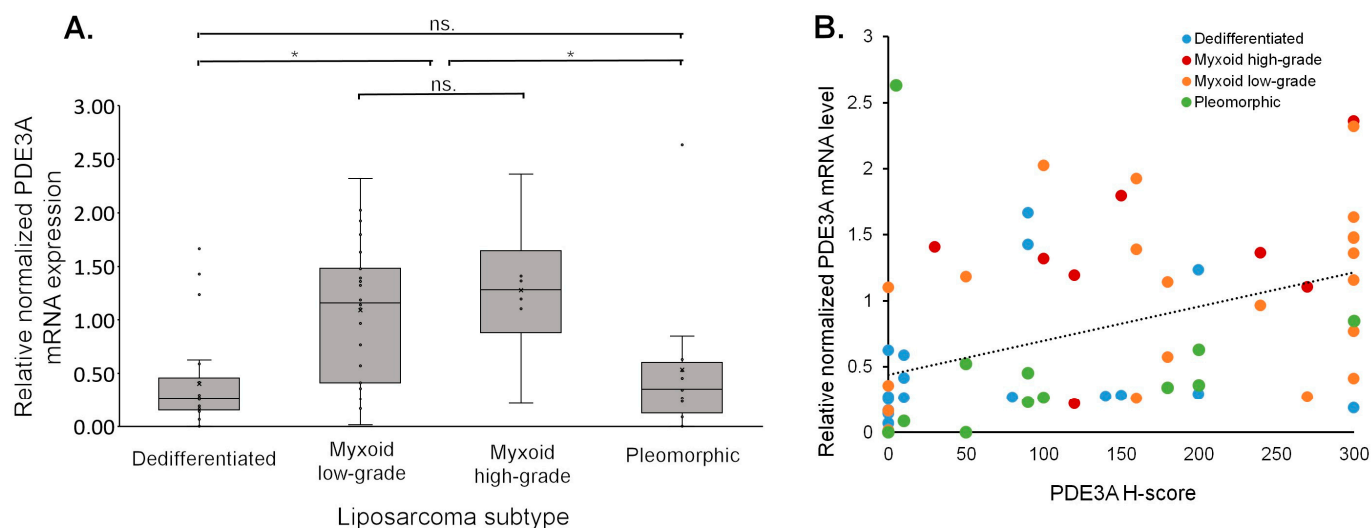


Figure S1. Validating PDE3A immunohistochemical staining in 63 LPS tissue results with RT-qPCR. (a) Strong PDE3A mRNA expression was observed in the myxoid subtype in comparison with other LPS subtypes. Data are presented as median relative to that of GIST882 cell line in FFPE (= 1). * $p < 0.01$ (Kruskal-Wallis test). (b) PDE3A RT-qPCR and immunohistochemistry results showed a strong correlation (Spearman's $\rho = 0.423$, $p < 0.001$). Each dot represents mRNA expression mean of ($n = 3$) biological replicates with the corresponding H-score value from immunohistochemical analysis of the sample. ns = not significant

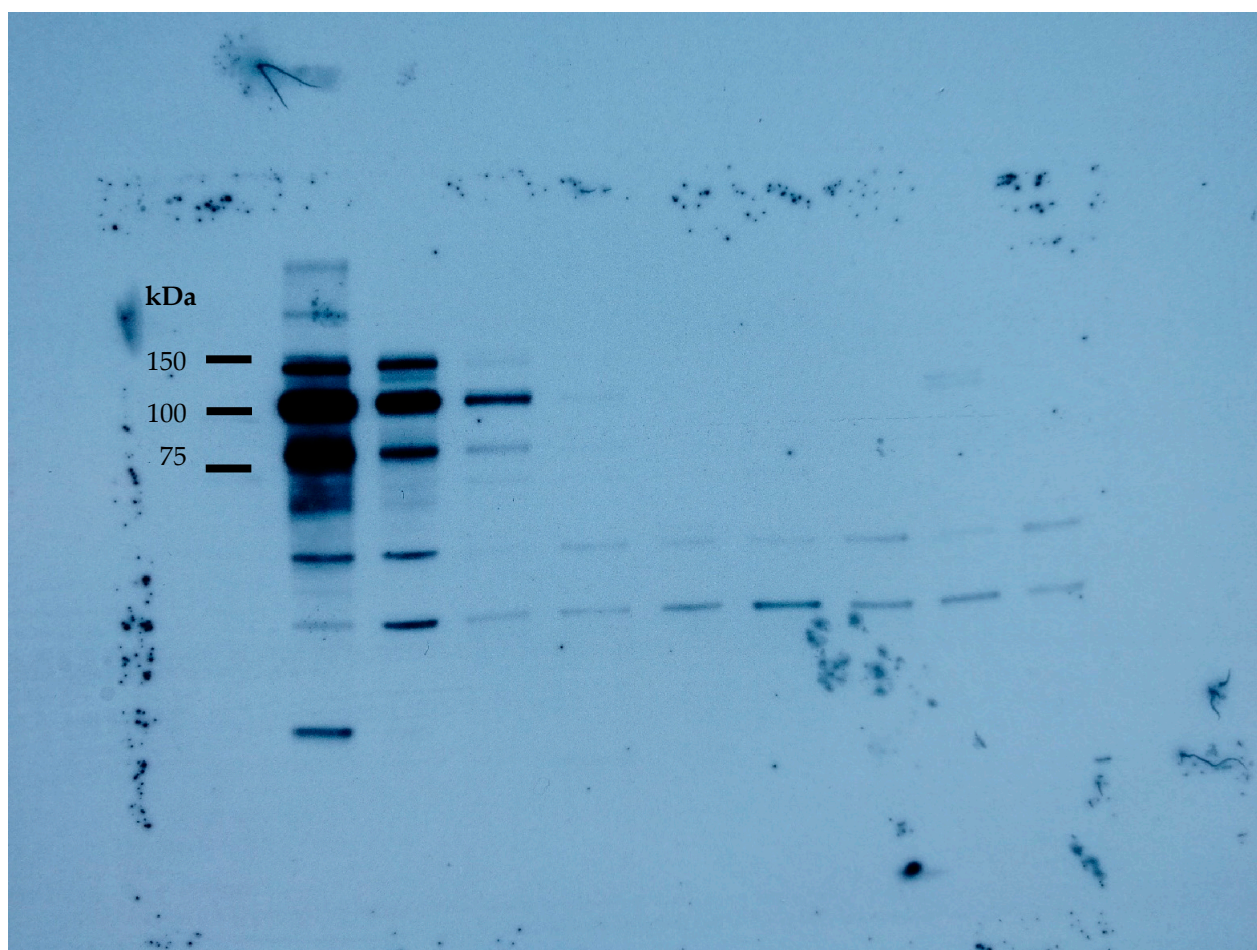


Figure S2. Unedited PDE3A western blot. 4 µg of protein/sample was loaded in wells in the following order: 1. GIST882, 2. SA4, 3. GOT3, 4. 93T449, 5. 94T778, 6. LPS141, 7. MLS1765-92, 8. MLS402-91, 9. SW872

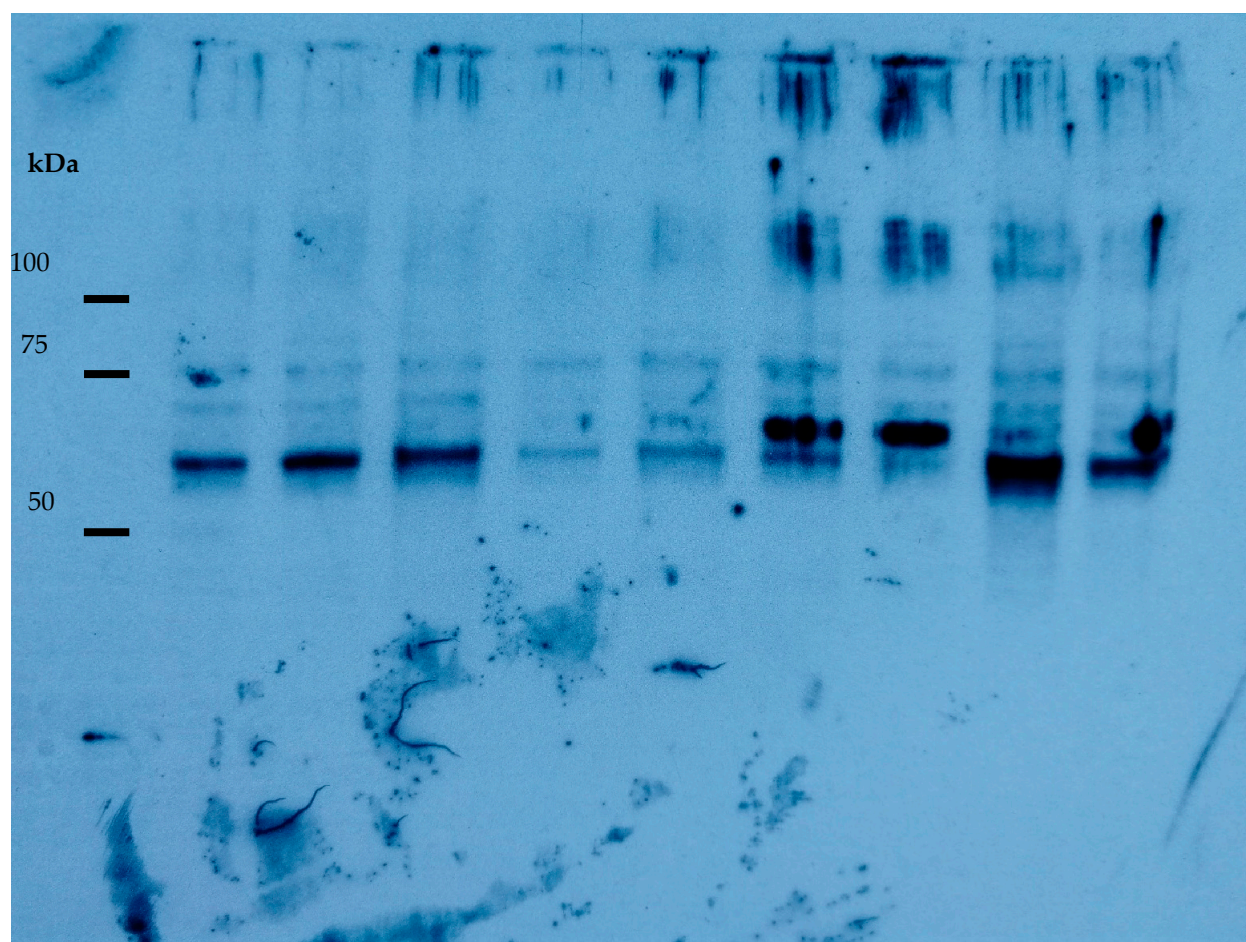


Figure S3. Unedited SLFN12 western blot. 4 µg of protein/sample was loaded in wells in the following order: 1. GIST882, 2. SA4, 3. GOT3, 4. 93T449, 5. 94T778, 6. LPS141, 7. MLS1765-92, 8. MLS402-91, 9. SW872

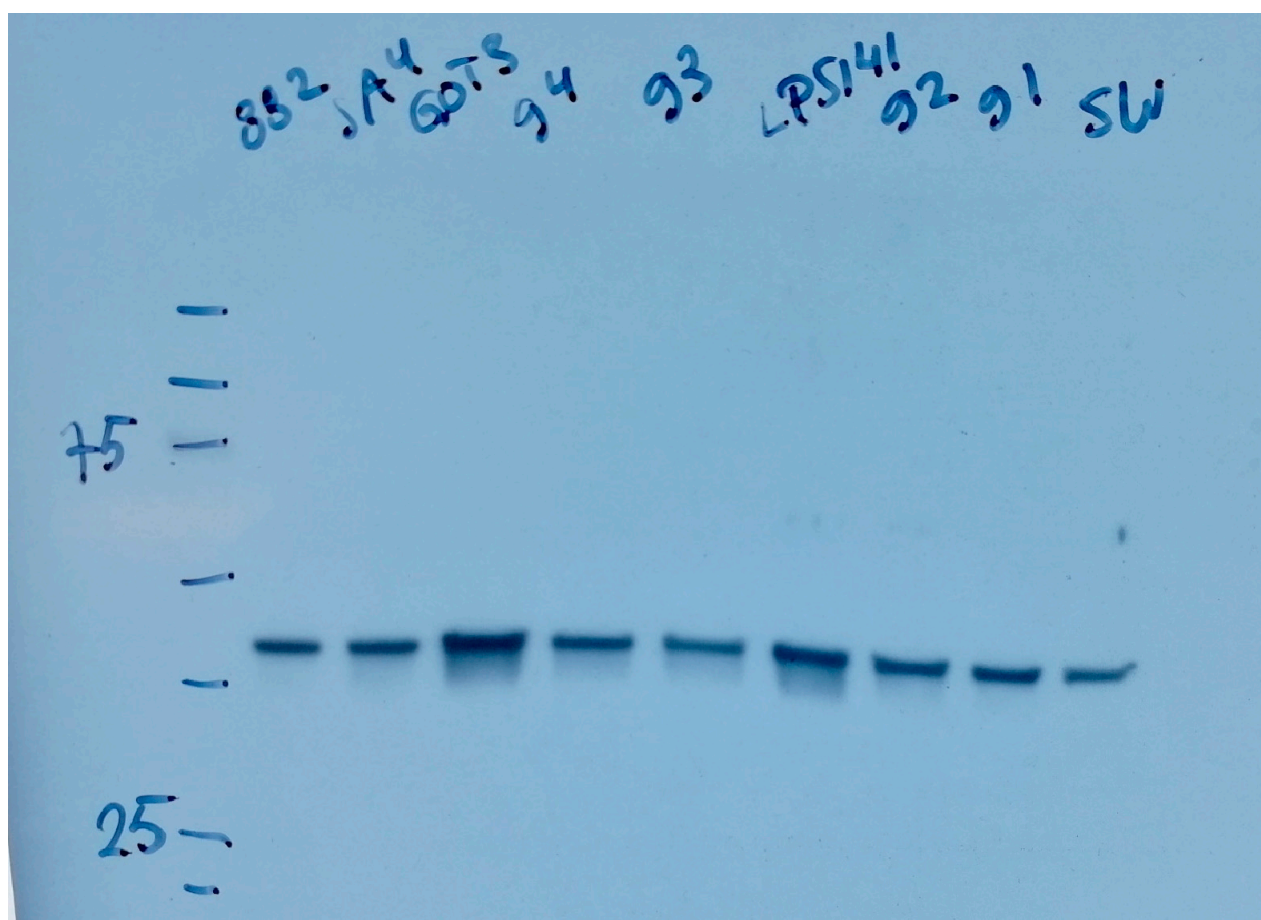


Figure S4. Unedited alpha actin western blot. 4 µg of protein/sample was loaded in wells in the following order: 1. GIST882, 2. SA4, 3. GOT3, 4. 93T449, 5.94T778, 6. LPS141, 7. MLS1765-92, 8. MLS402-91, 9. SW872

21

22

23

24