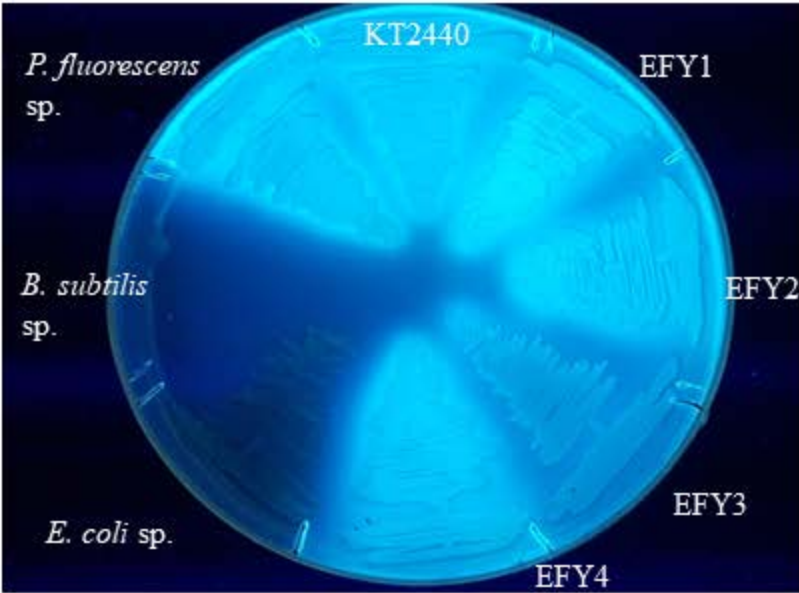


Supplementary material 1: Growth of strains EFY1, EFY2, EFY3, and EFY4 in modified S1 medium. *P. putida* KT2440 and *P. fluorescens* sp. were used as positive controls and *Bacillus subtilis* sp. and *Escherichia coli* sp. as negative controls. Images were taken after incubating the plates at 30 °C for 24 h.



Supplementary material 2: Colonies of *P. putida* KT2440 and strains EFY1, EFY2, EFY3, and EFY4 were grown on LB (top) or LB + 0.5 M NaCl (bottom) plates containing 40 µg/mL of Congo red. Images were taken after incubating the plates at 30 °C for 48 h.

