

### HMD Endmember (high MgO dikes)

- at 0.1 H<sub>2</sub>O (wt.%)
- at 0.5 H<sub>2</sub>O (wt.%)

### RR Endmember (Rattlesnake Rd lava)

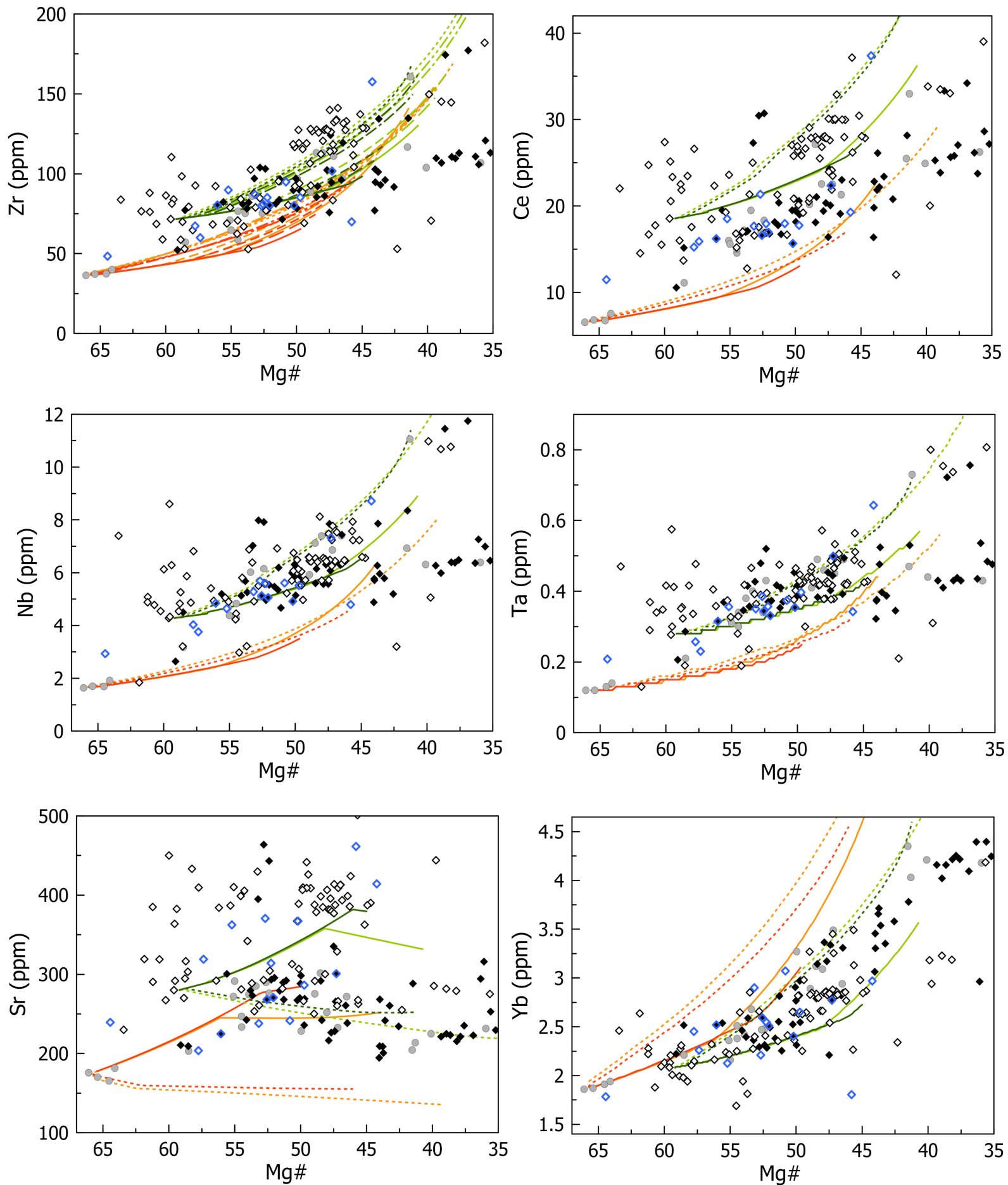
- at 0.1 H<sub>2</sub>O (wt.%)
- at 0.5 H<sub>2</sub>O (wt.%)

### Pressure (kb)

- 2kb
- 3kb
- 4kb
- 7kb
- 8kb
- 9kb

### Samples

- PGB<sup>1</sup>
- ◆ PGB, original distribution
- ◆ PGB, extended distribution
- ◆ samples with isotopic data



### HMD Endmember (high MgO dikes)

- at 0.1 H<sub>2</sub>O (wt.%)
- at 0.5 H<sub>2</sub>O (wt.%)

### RR Endmember (Rattlesnake Rd lava)

- at 0.1 H<sub>2</sub>O (wt.%)
- at 0.5 H<sub>2</sub>O (wt.%)

### Pressure (kb)

- 2kb
- 3kb
- 4kb
- 7kb
- 8kb
- 9kb

### Samples

- PGB<sup>1</sup>
- ◆ PGB, original distribution
- ◇ PGB, extended distribution
- ◇ samples with isotopic data