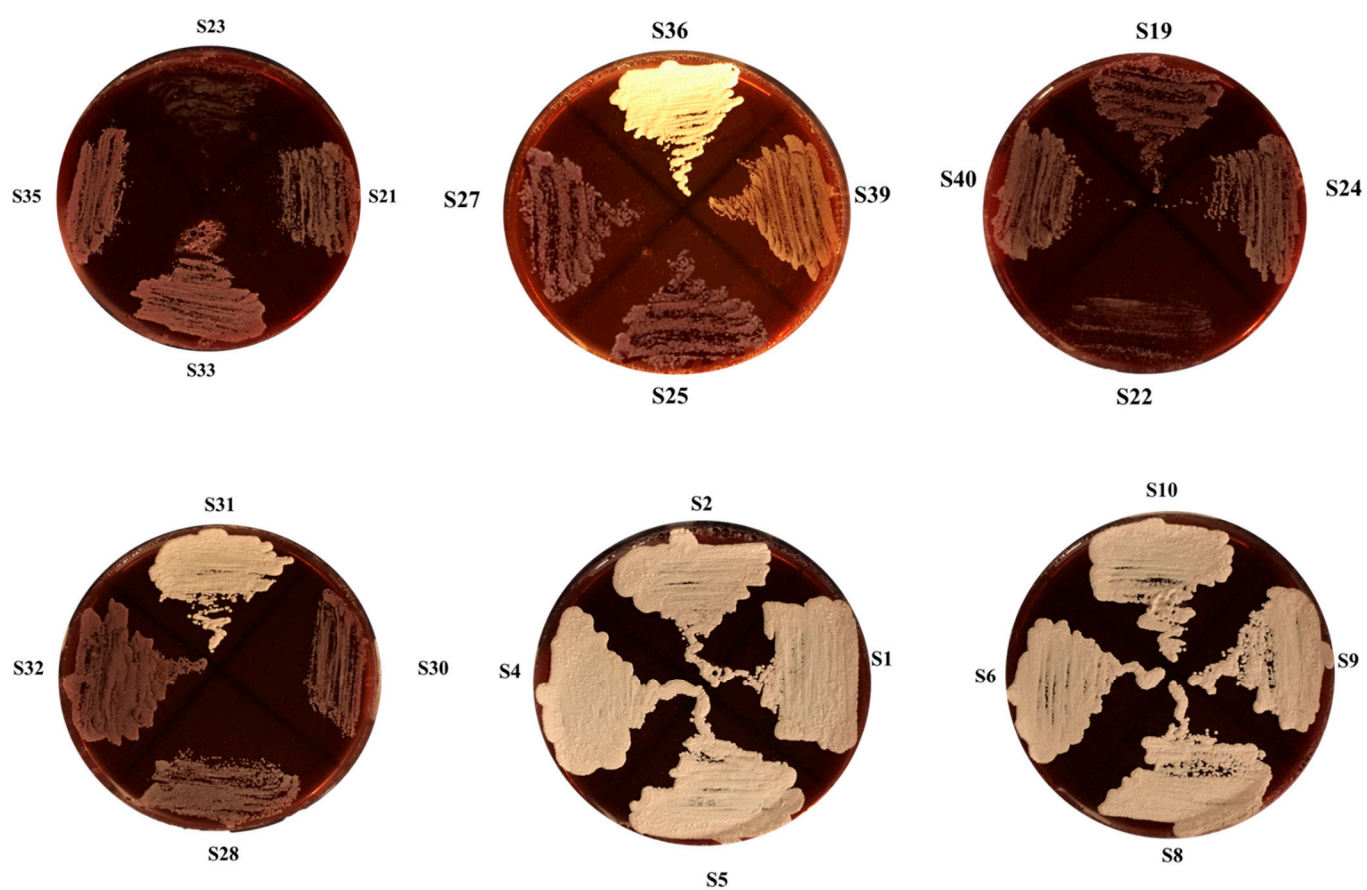


Supplementary Table S1. Yeast species detected in the different samples

Strain	Species	Origin	Accession number	Similarity (%)
S1				
S10				
S2	<i>M. farinosa</i>		FN565484	
S9		1890		
S4				
S19				
S39	<i>Z. bisporus</i>		AF399790	
S31	<i>M. farinosa</i>		FN565484	
S32	<i>Z. bisporus</i>	1895	AF399790	
S21			NG058447	
S24	<i>Z. bisporus</i>		EF460531	
S25			AY046115	
S22	<i>W. versatilis</i>	1920	KY106880	
S23	<i>S. lactis-condensi</i>		KY106546	100
S30	<i>Z. rouxii</i>		KY110285	
S29	<i>S. lactis-condensi</i>		KY106546	
S40	<i>Z. bailii</i>		KY110241	
S26	<i>W. versatilis</i>	1975	KY106880	
S28	<i>Z. bisporus</i>		AF399790	
S27	<i>Z. bisporus</i>		AY046115	
S33	<i>Z. bailii</i>		KY110241	
S35	<i>Z. bailii</i>			
S36		2008		
S6				
S8	<i>M. farinosa</i>		FN565484	
S5				



Supplementary Figure S1. Anthocyanins adsorption by yeast cell walls