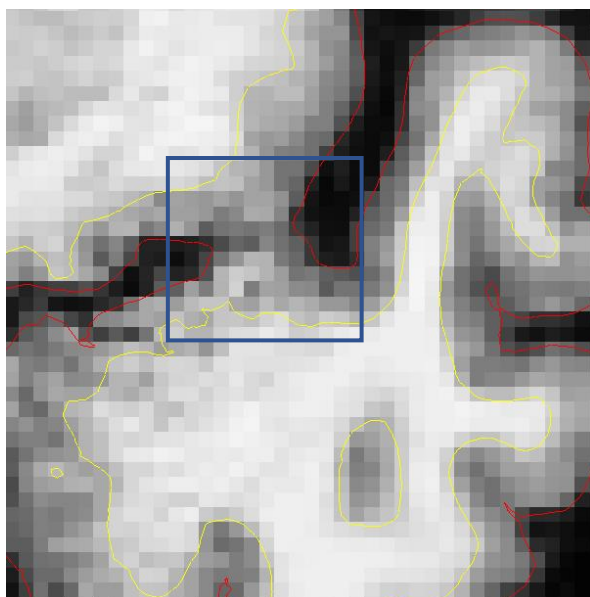
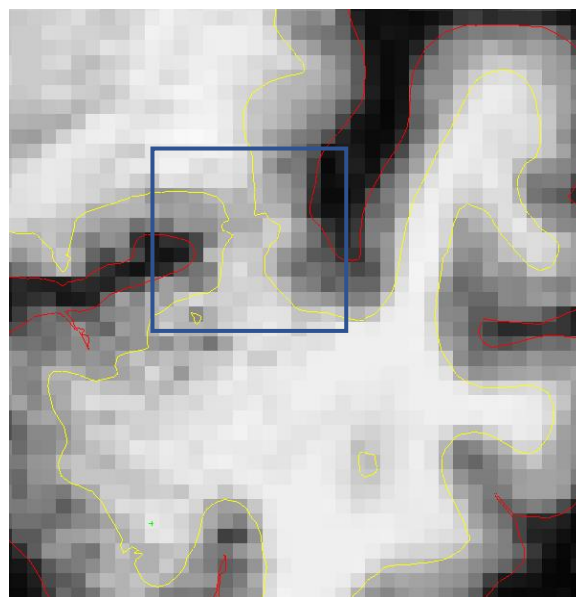


## Supplementary materials

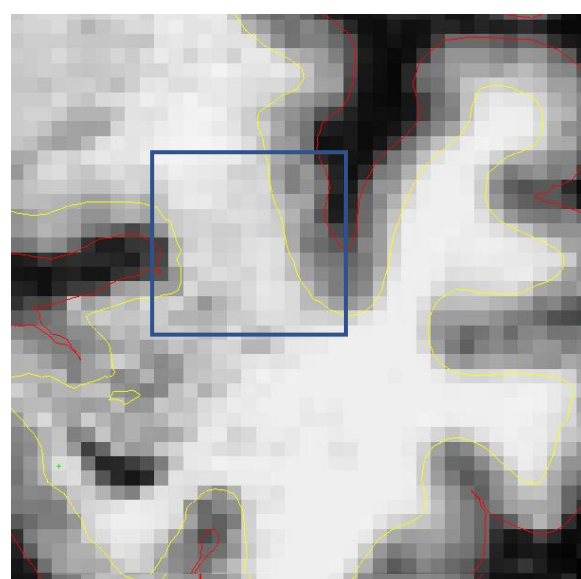
The following **Figures S1-8** visualize the borders of mPRC, IPRC, and ERC in coronal slices using FreeSurfer in one random participant. **A:** How to find the **anterior border** of the left hemisphere (**Figures S1-4**). Yellow line represents white matter surface and red line represents pial surface as generated by FreeSurfer. *Note: 1slice is equal to 1mm.*



**Figure S1.** Anterior border +3slices: Last slice, where the white matter of the limen insulae is not visible (blue mark).



**Figure S2.** Anterior border +2slices: First slice, where the white matter of the limen insulae is visible (blue mark).

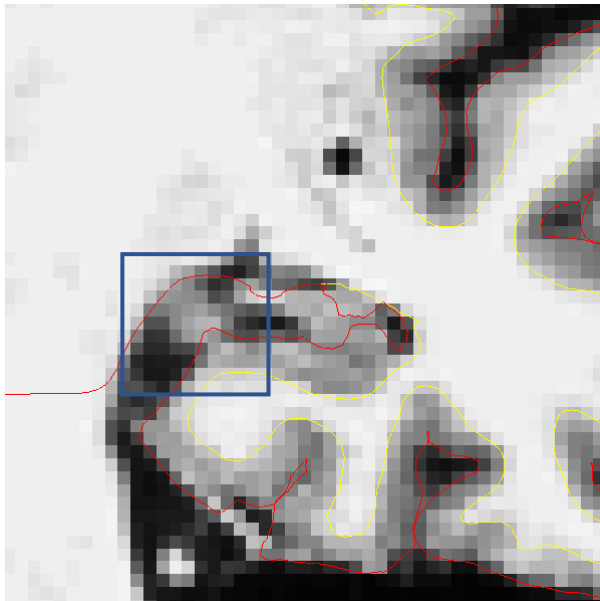


**Figure S3.** Anterior border: 2slices posterior to the first slice, where the white matter of the limen insulae is visible.

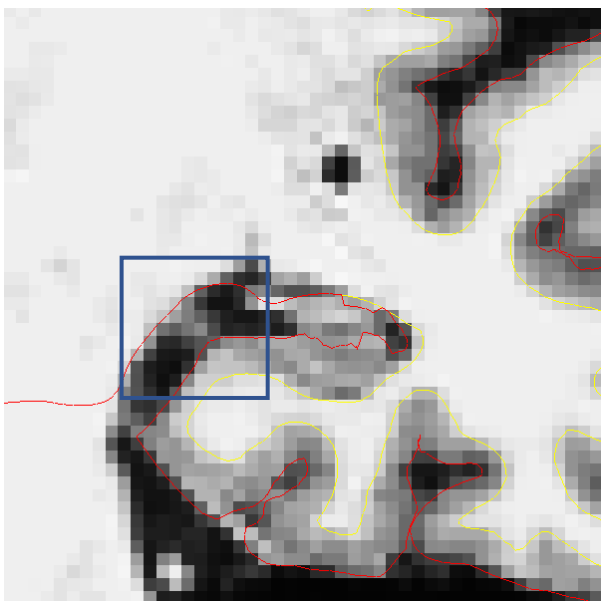
Structure	Anterior border
ERC	2 mm posterior to the first anterior slice where the white matter of the limen insulae is visible.
Medial PRC	Same coronal level as the anterior border of the ERC, i.e., 2 mm posterior to the first anterior slice where the white matter of the limen insulae is visible.
Lateral PRC	Same coronal level as the anterior border of the ERC, i.e., 2 mm posterior to the first anterior slice where the white matter of the limen insulae is visible.

**Figure S4.** Anterior border: Adapted and modified from Krumm et al. (2016).

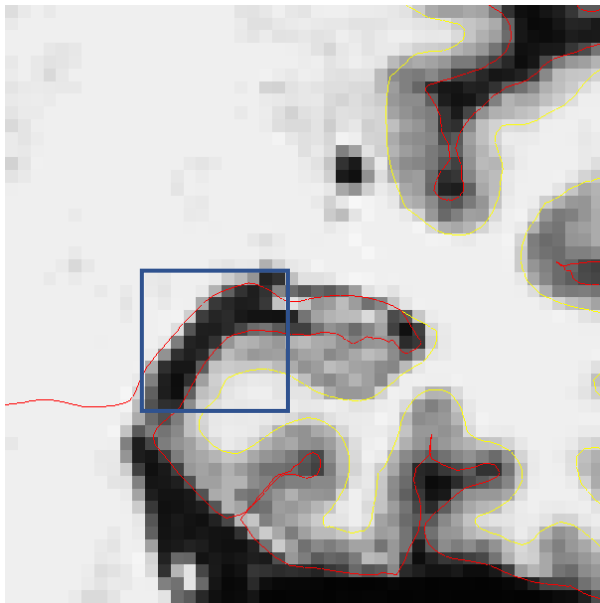
**B: How to find the posterior border of the left hemisphere (Figures S5-8).**



**Figure S5.** Posterior border +2slices: Apex of the intralimbic gyrus is still visible (blue mark).



**Figure S6.** Posterior border +1slice: Last slice still containing the apex of the intralimbic gyrus (blue mark).



**Figure S7.** Posterior border: 1slice posterior to the last slice still containing the apex of the intralimbic gyrus (blue mark).

Structure	Posterior border
ERC	1 mm posterior to the last slice still containing the apex of the intralimbic gyrus.
Medial PRC	1 mm posterior to the last slice still containing the apex of the intralimbic gyrus.
Lateral PRC	1 mm posterior to the last slice still containing the apex of the intralimbic gyrus.

**Figure S8.** Posterior border: Adapted and modified from Krumm et al. (2016).