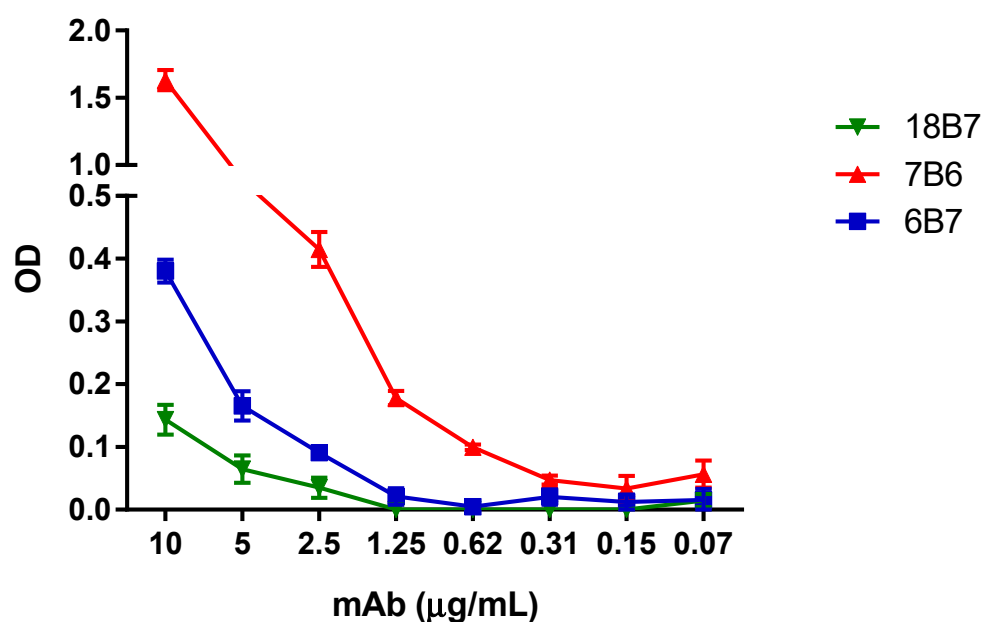


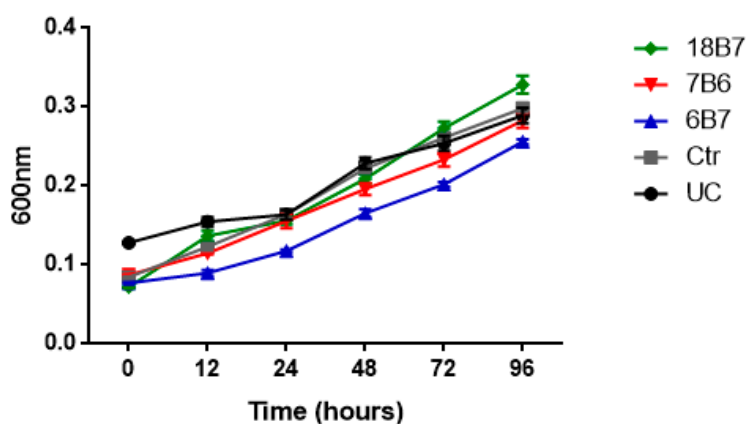
Supplemental information

## Remodeling of the *Histoplasma capsulatum* membrane induced by monoclonal antibodies

Meagan C. Burnet, Daniel Zamith-Miranda, Heino M. Heyman, Karl K. Weitz, Erin L. Bredeweg, Joshua D. Nosanchuk and Ernesto S. Nakayasu



**Figure S1.** mAb binding to *H. capsulatum*. mAb binding was tested by ELISA against *H. capsulatum* yeast cells immobilized on the plate using serial dilutions of the mAb 18B7, 7B6 and 6B7.



**Figure S2.** *Histoplasma capsulatum* growth in the presence of monoclonal antibodies. Cells were grown in Ham's F12 in the presence or absence of 6B7, 7B6 and 18B7 mAb (10 μg/mL). Growth was monitored by absorbance at 600 nm in a plate reader.