

Supplementary Materials

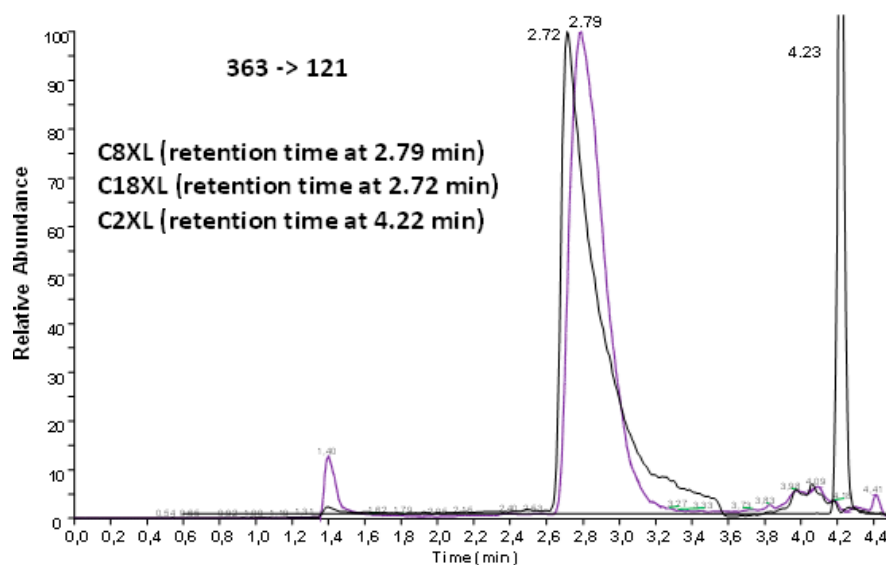


Figure S1: Chromatograms obtained with C8XL, C18XL and C2XL extraction columns. For C8XL and C18XL columns, the initial percentage of B1 used is 40%. For C2XL, the initial percentage of B1 used is 25%. The chromatogram obtained with C2XL is not at the same scale as the others.

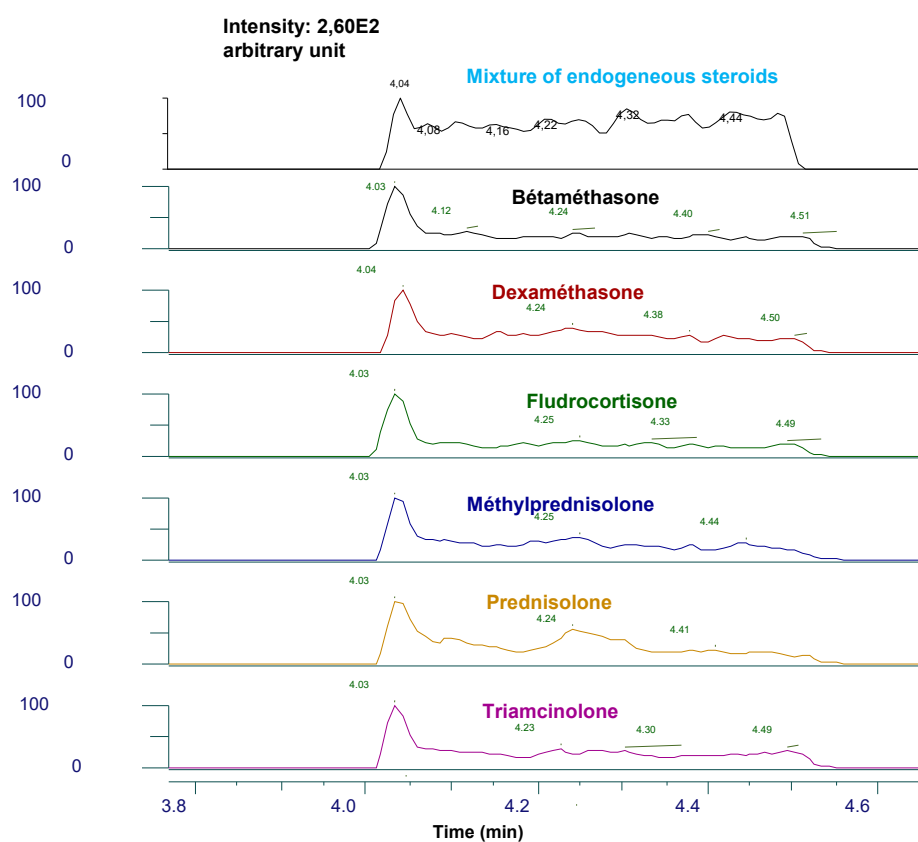


Figure S2: Endogeneous and exogeneous steroids analysis by LC-MS/MS. Chromatograms (363->121 and 366->124) obtained by analyzing solutions of exogenous and endogenous steroids listed in the part 2.1, with the LC-MS/MS method described in 2.4 and 2.5 (cortisol analysis).

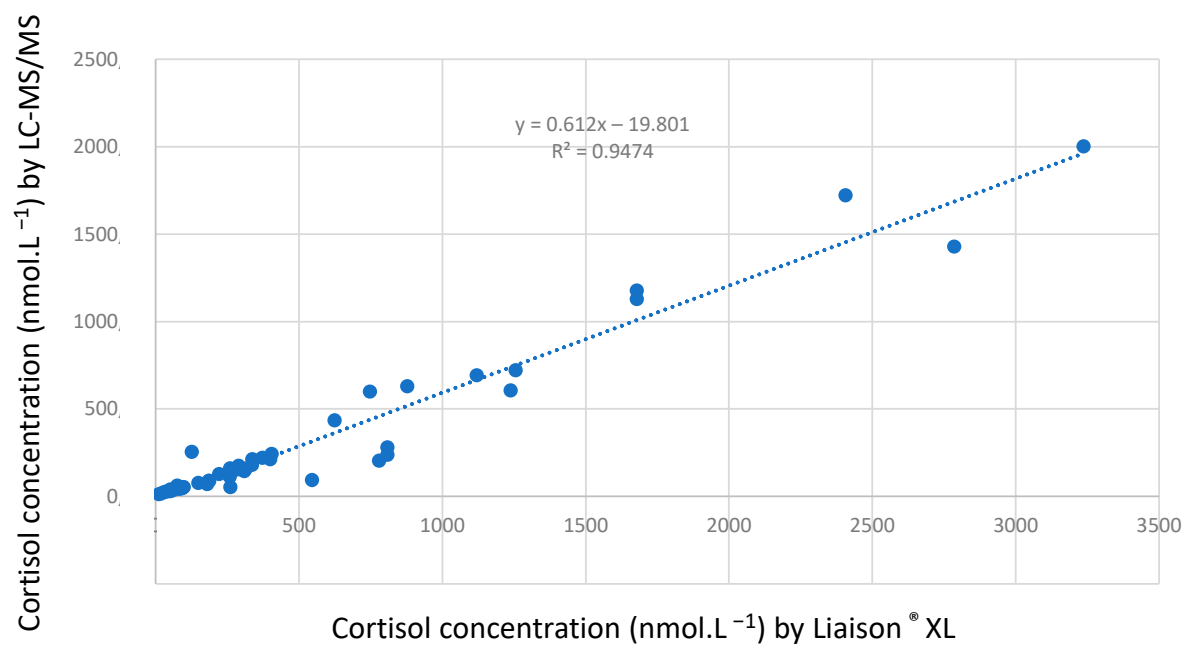


Figure S3: Correlation between urinary free cortisol concentration values determined by LC-MS/MS and Liaison[®] XL (n=47).