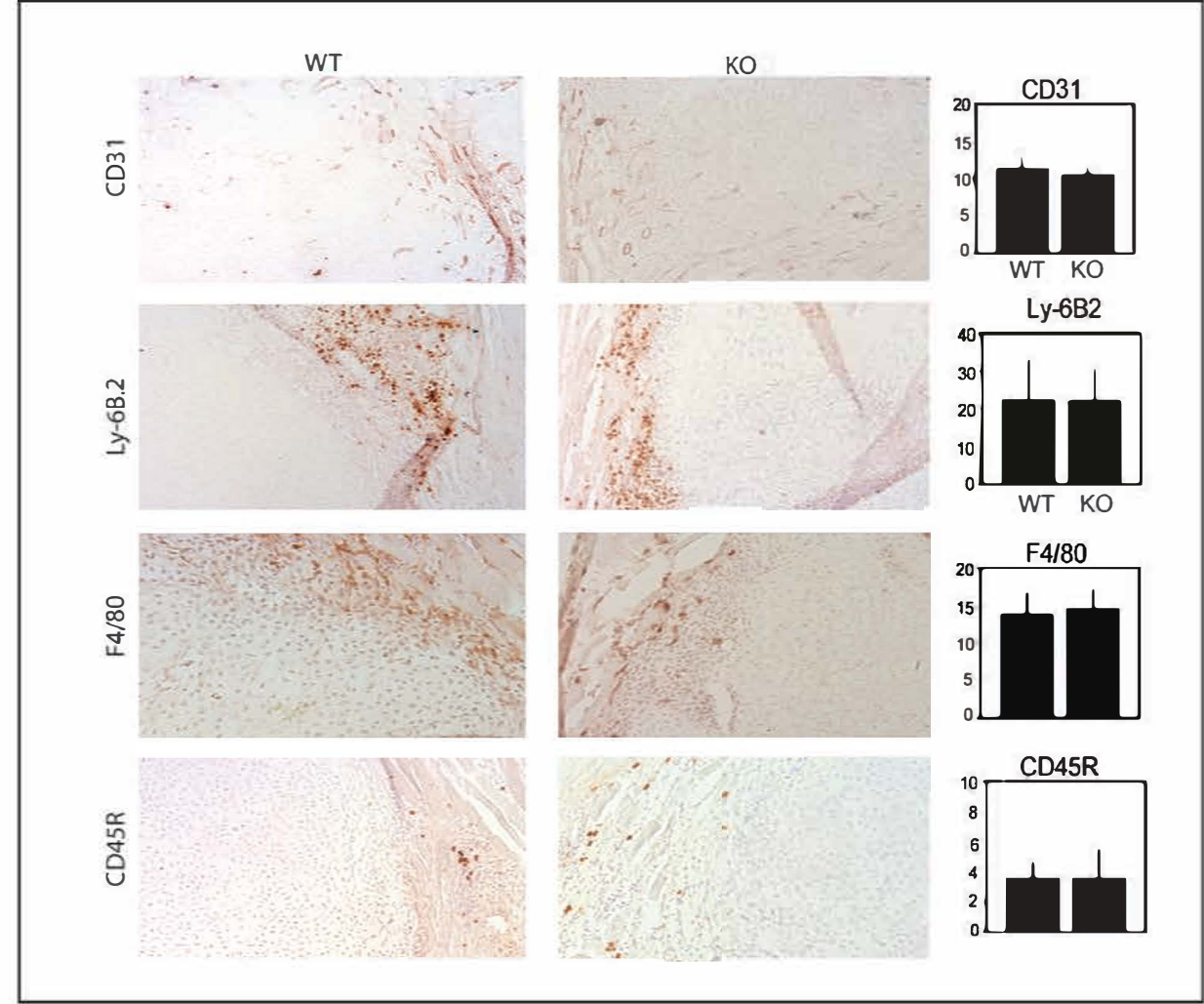


**Supplement Figure S1. Immunohistochemical staining for non-skeletal lineages.**



**Immunohistochemical staining for non-skeletal lineages.** Histology analysis of the bone fracture callus for endothelial cells (CD31) macrophage (F4/80), neutrophil and monocytes (Ly-6B.2), and T cell and B cells (CD45).