

# Supporting Information

## Analysis of Self-Assembled Low- and High-Molecular-Weight Poly-L-Lysine-Ce6 Conjugate-Based Nanoparticles

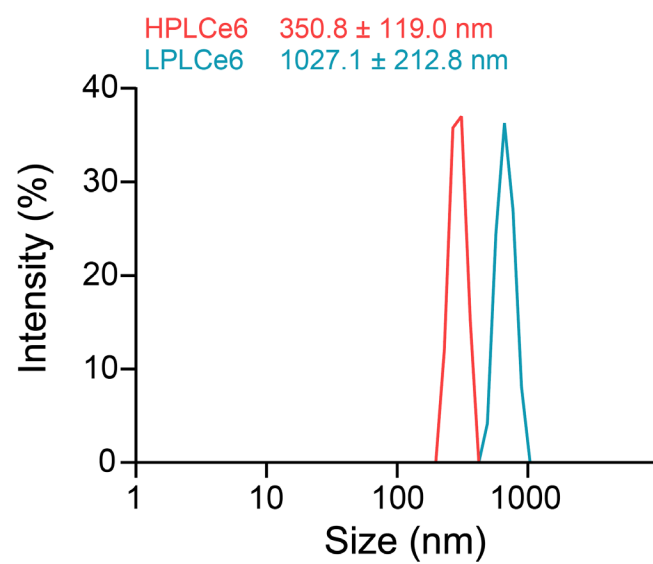
Minho Seo<sup>1†</sup>, Kyeong-Ju Lee<sup>1†</sup>, Bison Seo<sup>2</sup>, Jun-Hyuck Lee<sup>1</sup>, Jae-Hyeon Lee<sup>1</sup>, Dong Wook Shin<sup>2</sup>, and  
Jooho Park<sup>1,2\*</sup>

<sup>1</sup>Department of Applied Life Science, BK21 Program, Konkuk University, Chungju 27478, Republic of Korea

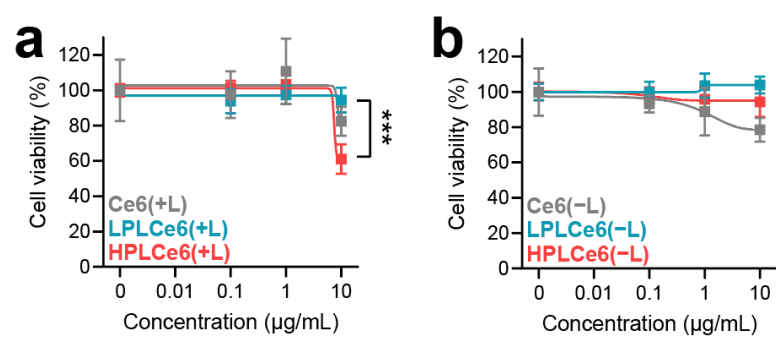
<sup>2</sup>College of Biomedical and Health Science (RIBHS), Konkuk University, Chungju 27478, Republic of Korea

<sup>†</sup>These authors contributed equally to this work.

**\*Corresponding author:** Jooho Park



**Figure S1.** The size distribution of HPLCe6 and LPLCe6 nanoparticles



**Figure S2.** Cytotoxicity evaluation of Ce6, LPLCe6, and HPLCe6 on CT26.WT cells for 12 hours (a) with laser irradiation, and (b) without laser irradiation ( $n = 6$ ), mean  $\pm$ SD, \*\*\*  $p < 0.001$ .

**Table S1.** Photo- and cytotoxicity of Ce6, LPLCe6 and HPLCe6 expressed by IC50 values of the mean  $\pm$  SD ( $\mu\text{g/mL}$ ).

Cell line	Compounds	Cytotoxicity	Phototoxicity	PI*
CT26.WT	Ce6	83.30 $\pm$ 47.70	8.14 $\pm$ 3.04	10.23
	LPLCe6	243.84 $\pm$ 194.25	126.23 $\pm$ 87.48	1.93
	HPLCe6	350.08 $\pm$ 274.22	4.34 $\pm$ 0.84	80.66

\*Phothotherapeutic index (PI) = Cytotoxicity/Phototoxicity