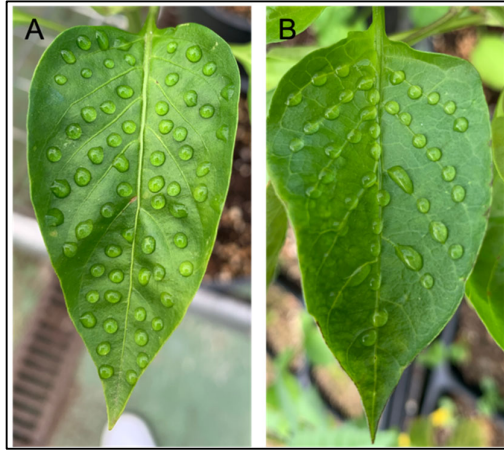


## Supplemental Material

**Title:** Illustration of the drop application.

**Authors:** Jon Niklas Henningsen, Héctor Alejandro Bahamonde, Karl Hermann Mühling and Victoria Fernández



**Figure S1.** Drops of 200 mM KH<sub>2</sub>PO<sub>4</sub> deposited on the adaxial leaf lamina (**A**) and the veins (**B**) of pepper leaves.