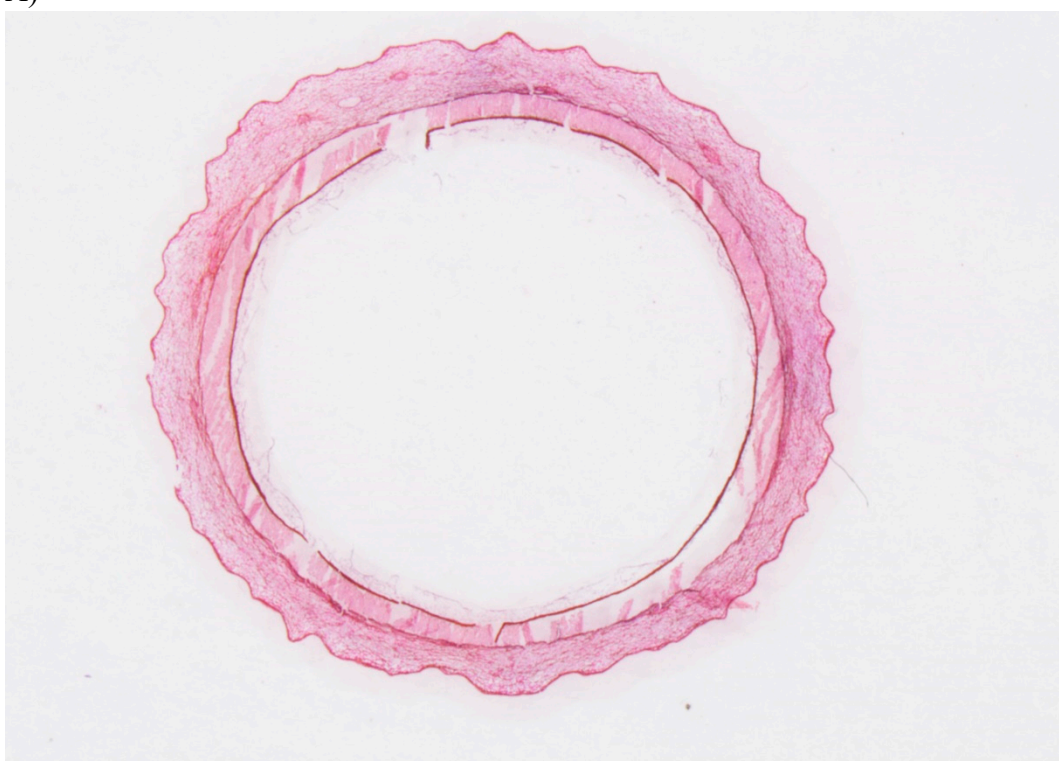




(A)



(B)

Figure S1. Longitudinal (A) and cross section (B) of *Nageia nagi*.

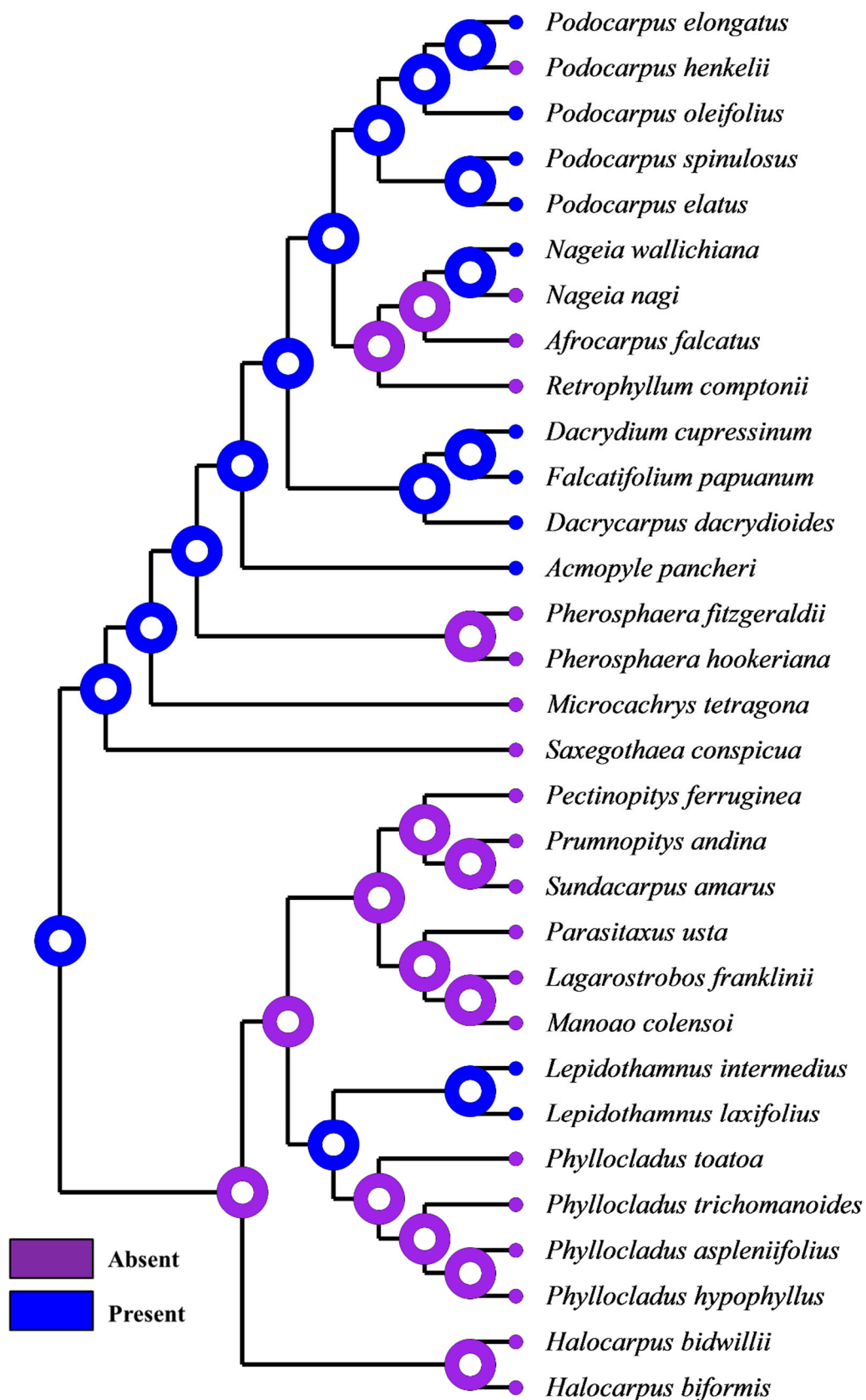
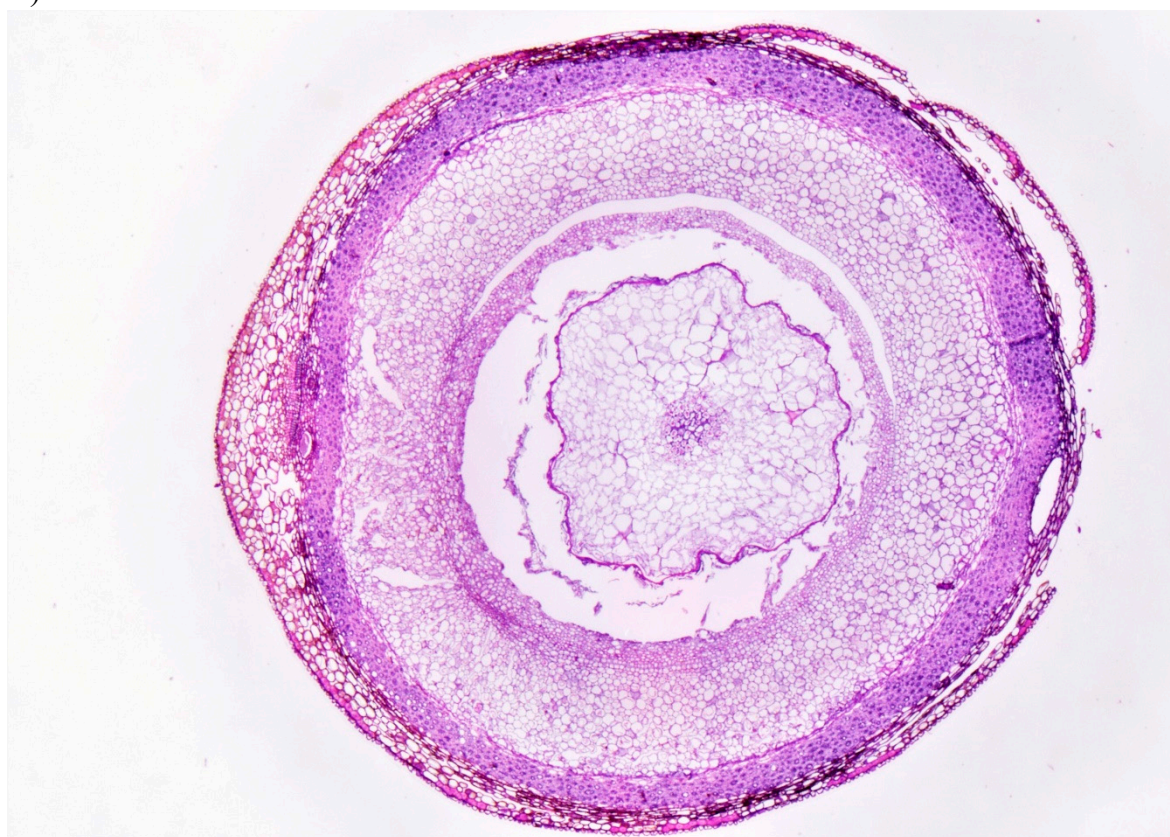


Figure S2. Character mapping of the receptaculum presence in different genera of Podocarpaceae using RASP 4.2 (Reconstruct Ancestral State) Maximum likelihood.



A)



B)

Figure S3. Seed cone (A) and cross section (B) of *Podocarpus lawrencei*.

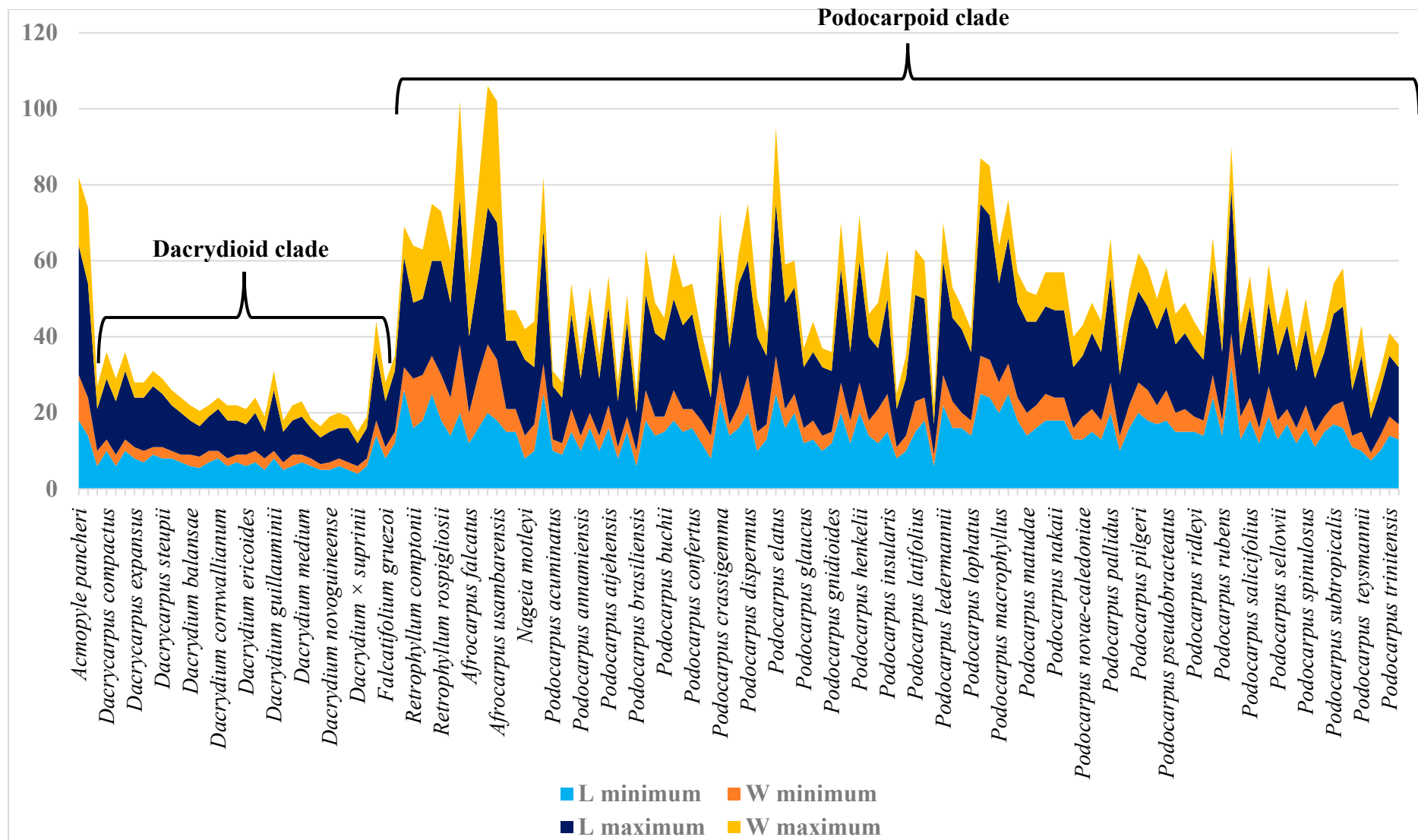


Figure S4. Variation in seed cone size; L (length) and W (width). Species of Podocarpoid clade shows larger seed cone size as compared to Dacrydioid clade.