

SUPPLEMENTARY MATERIALS

Experimental Design and Multiple Response Optimization for the Extraction and Quantitation of Thirty-four Priority Organic Micropollutants in Tomatoes through the QuEChERS Approach

Luca Rivoira^{1,}, Massimo Del Bubba², Giasmin Cecconi¹, Michele Castiglioni¹, Valentina Testa¹,
Mattia Isola¹, and Maria Concetta Bruzzoniti^{1,*}*

¹ *Department of Chemistry, Università degli Studi di Torino, Via Pietro Giuria 7, 10125, Torino, Italy*

² *Department of Chemistry “Ugo Schiff, Università degli Studi di Firenze, Via della Lastruccia, 13 -
50019 Sesto Fiorentino (FI), Italy*

*Corresponding authors:

E-mail address: luca.rivoira@unito.it (L. Rivoira) and mariaconcetta.bruzzoniti@unito.it (M.C. Bruzzoniti). Address: Via Pietro Giuria 7, 10125, Torino (Italy). Phone number: +39 0116705245. Fax number: +39 0112305245



Figure S1. Visual results of the extraction of “Rio Grande” cultivar using cyclohexane (A), acetone (B) and dichloromethane (C) solvents. 0.5 g sample weight, 10 mL extraction volume and 5 min @ 1507xg centrifuge.

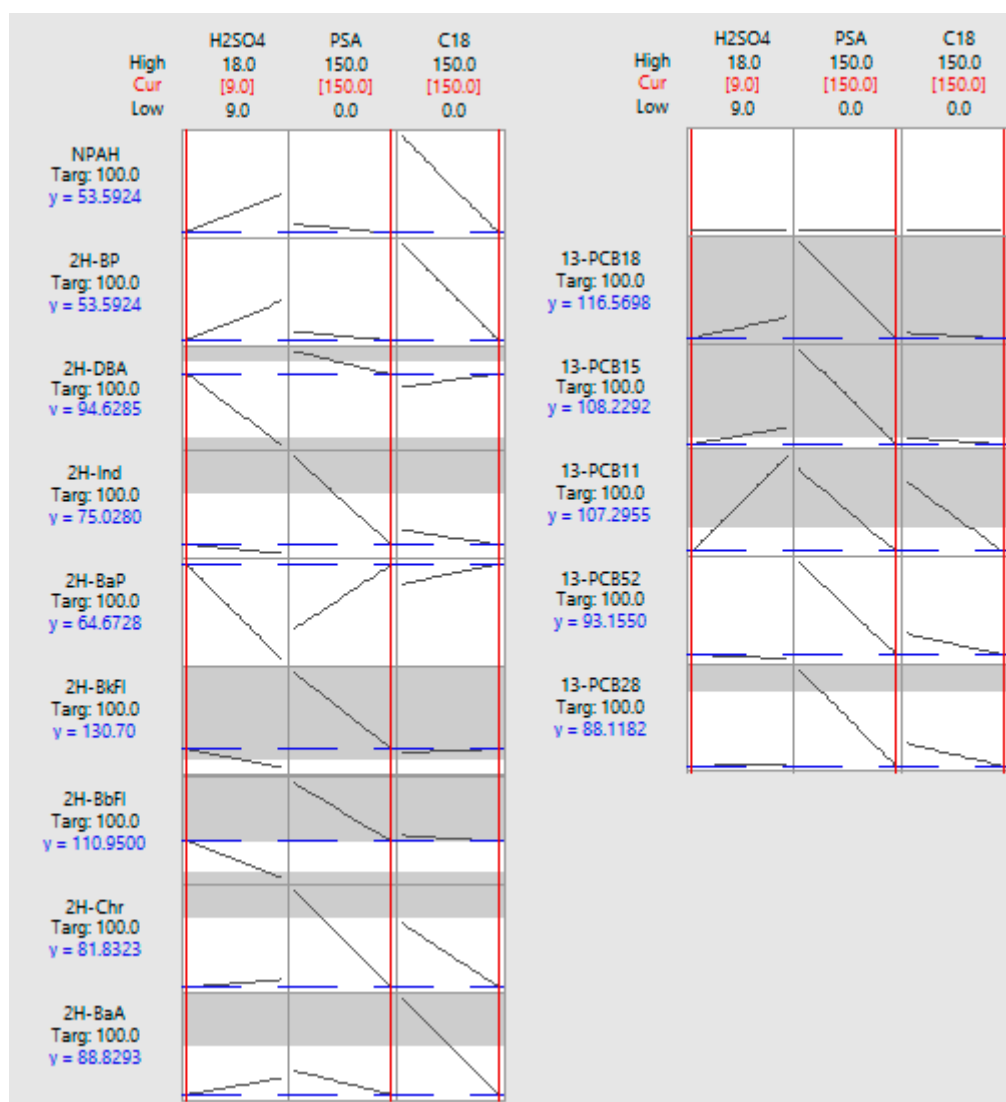


Figure S2. The optimization plot retrieved from MiniTab software, after performing the multiple response optimization. The optimization plot shows the effect of each factor (columns) on the responses or composite desirability (rows). The vertical red lines on the graph represent the current factor settings. The numbers

displayed at the top of a column show the current factor level settings (in red). The horizontal blue lines and numbers represent the responses for the current factor level.

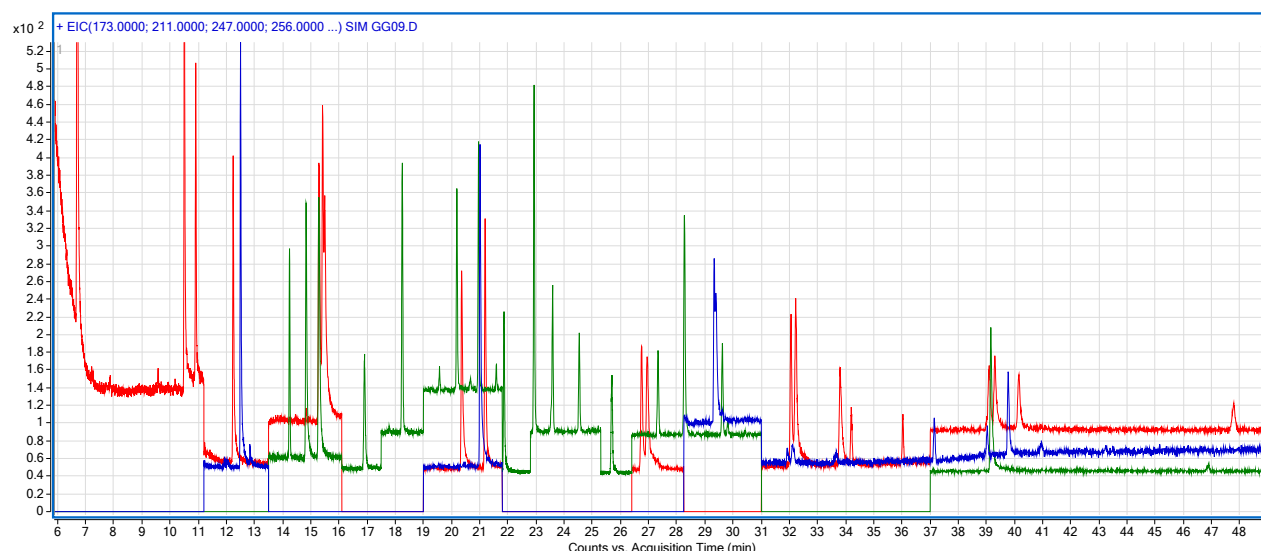


Figure S3. Total ion chromatogram obtained for the 16 PAHs (red line), 14PCBs (green line) and 4 nitro-PAHs (blue line) in post-extraction solvent using the optimized QuEChERS approach followed by GC-MS. Analysis conditions are detailed in Material and Method section.

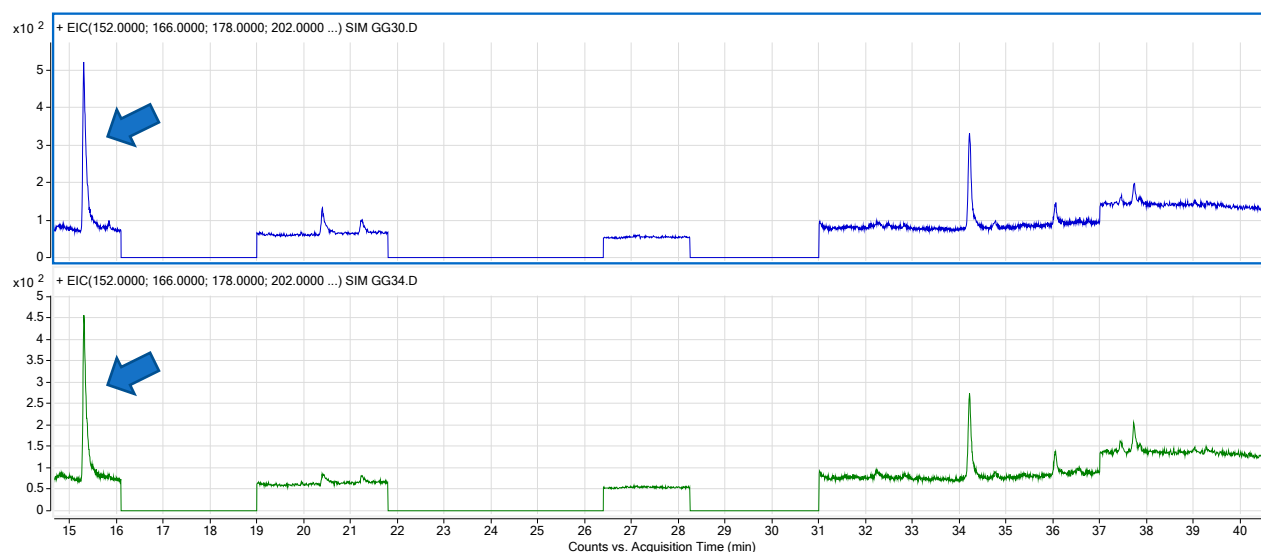


Figure S4. Chromatograms obtained after the extraction and analysis of “Rio Grande” (blue) and “Beefsteak” (green) using the optimized protocol. Phe peak is evidenced by a blue arrow. Protocols details are reported in Material and Method section.

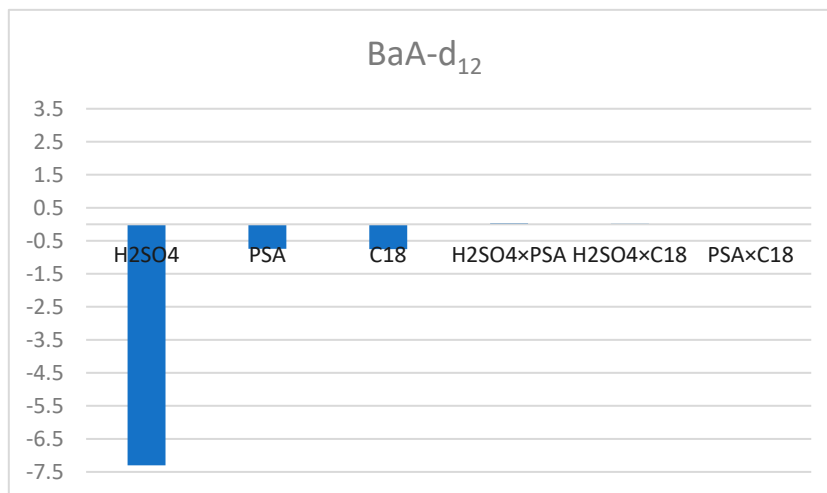
Table S1. Equation models and histogram of coefficients retrieved for each surrogate after the full factorial design (conditions detailed in paragraph 3.1.2.1)

Analyte

Equation and diagram

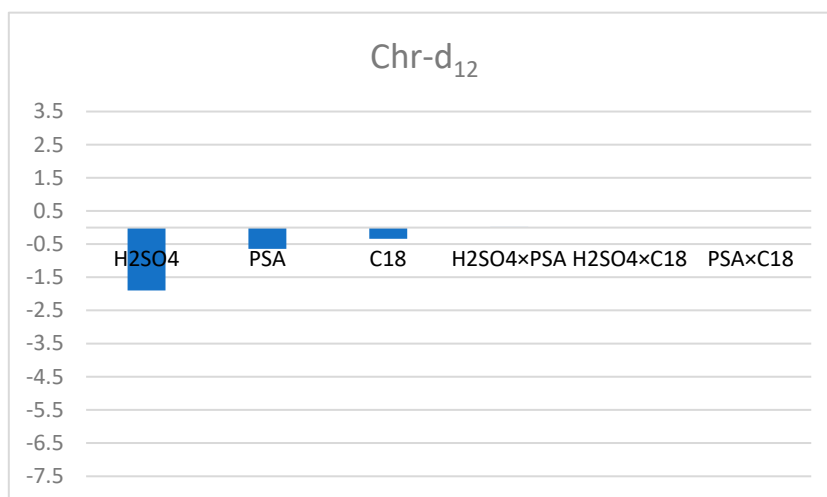
BaA-d₁₂

$$\text{BaA-d}_{12} = 256,9 - 7,30 \times \text{H}_2\text{SO}_4 - 0,745 \times \text{PSA} - 0,752 \times \text{C18} + 0,0385 \times \text{H}_2\text{SO}_4 \times \text{PSA} + 0,0155 \times \text{H}_2\text{SO}_4 \times \text{C18} + 0,00218 \times \text{PSA} \times \text{C18}$$



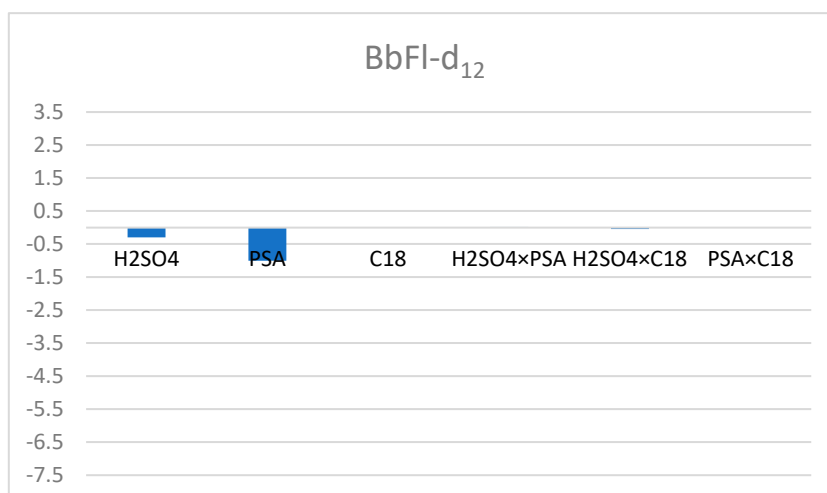
Chr-d₁₂

$$\text{Chr-d}_{12} = 196,1 - 1,90 \times \text{H}_2\text{SO}_4 - 0,642 \times \text{PSA} - 0,339 \times \text{C18} + 0,0191 \times \text{H}_2\text{SO}_4 \times \text{PSA} - 0,0041 \times \text{H}_2\text{SO}_4 \times \text{C18} + 0,001321 \times \text{PSA} \times \text{C18}$$



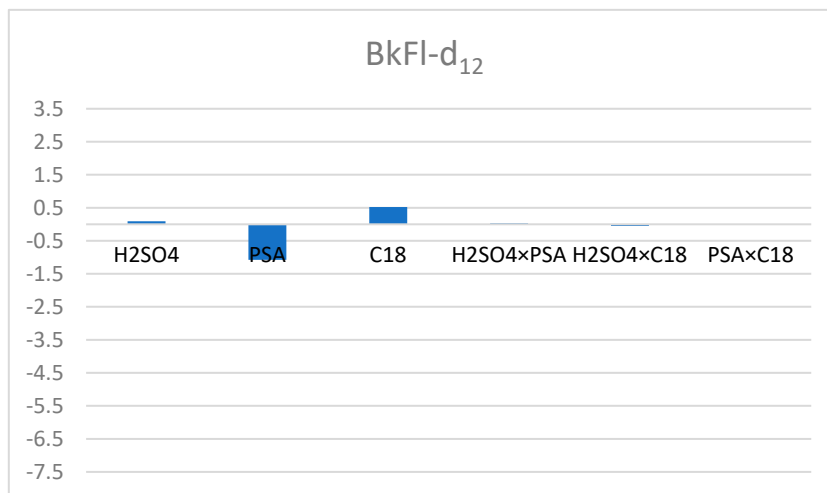
BbFl-d₁₂

$$\text{BbFl-d}_{12} = 247,0 - 0,30 \times \text{H}_2\text{SO}_4 - 1,005 \times \text{PSA} - 0,004 \times \text{C18} + 0,0180 \times \text{H}_2\text{SO}_4 \times \text{PSA} - 0,0489 \times \text{H}_2\text{SO}_4 \times \text{C18} + 0,00260 \times \text{PSA} \times \text{C18}$$



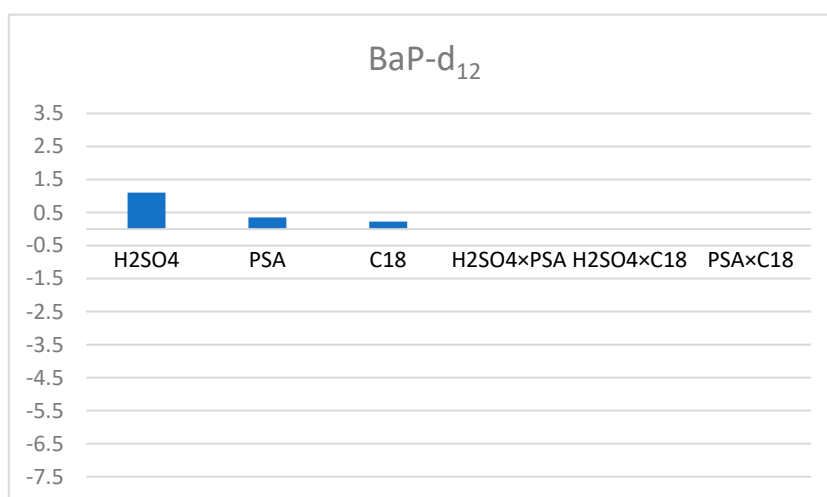
BkFl-d₁₂

$$\text{BkFl-d}_{12}=250+0,09\times\text{H}_2\text{SO}_4-1,08\times\text{PSA}+0,52\times\text{C18}+0,0270\times\text{H}_2\text{SO}_4\times\text{PSA}-0,0512\times\text{H}_2\text{SO}_4\times\text{C18}-0,00012\times\text{PSA}\times\text{C18}$$



BaP-d₁₂

$$\text{BaP-d}_{12}=15,42+1,105\times\text{H}_2\text{SO}_4+0,3538\times\text{PSA}+0,2258\times\text{C18}-0,02304\times\text{H}_2\text{SO}_4\times\text{PSA}-0,02527\times\text{H}_2\text{SO}_4\times\text{C18}+0,000435\times\text{PSA}\times\text{C18}$$



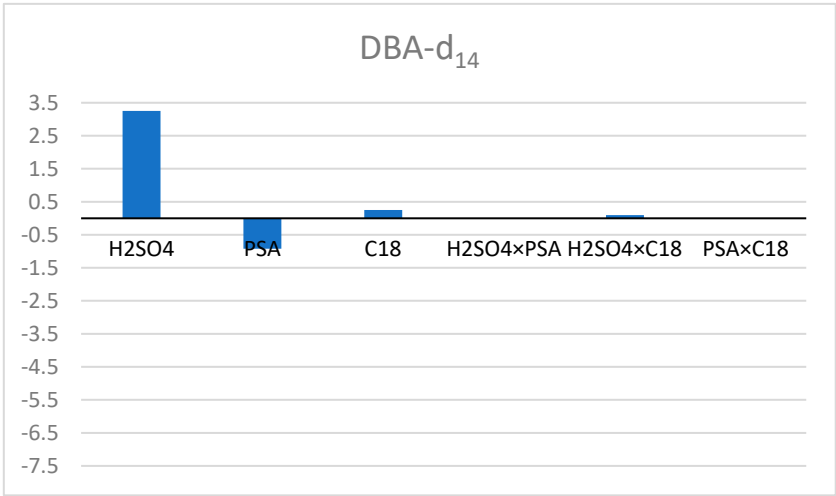
Ind-d₁₂

$$\text{Ind-d}_{12}=172,7+1,17\times\text{H}_2\text{SO}_4-0,952\times\text{PSA}+0,080\times\text{C18}+0,0328\times\text{H}_2\text{SO}_4\times\text{PSA}-0,0452\times\text{H}_2\text{SO}_4\times\text{C18}+0,001745\times\text{PSA}\times\text{C18}$$



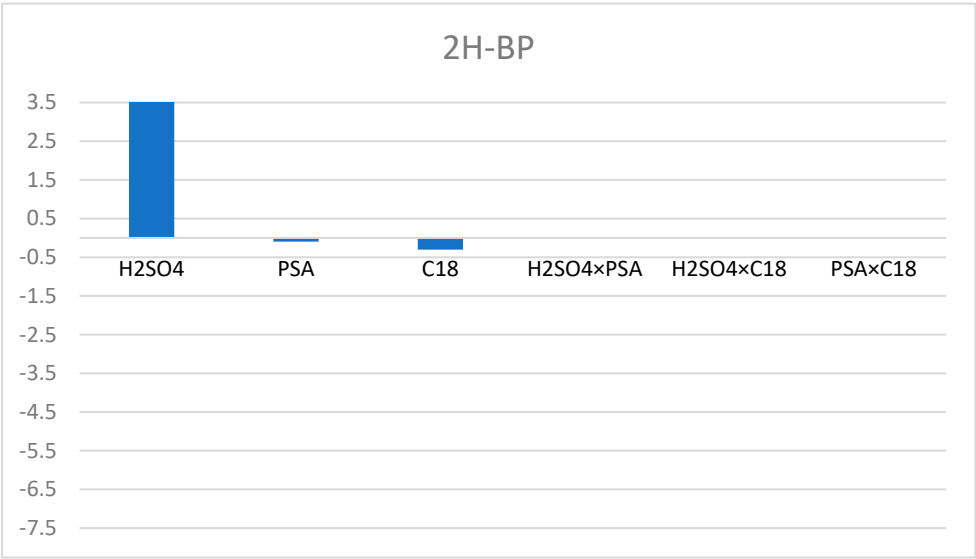
DBA-d₁₄

$$\text{DBA-d}_{14}=181,6+3,25\times\text{H}_2\text{SO}_4-0,925\times\text{PSA}+0,252\times\text{C18}+0,0021\times\text{H}_2\text{SO}_4\times\text{PSA}-$$
$$0,0934\times\text{H}_2\text{SO}_4\times\text{C18}+0,00469\times\text{PSA}\times\text{C18}$$



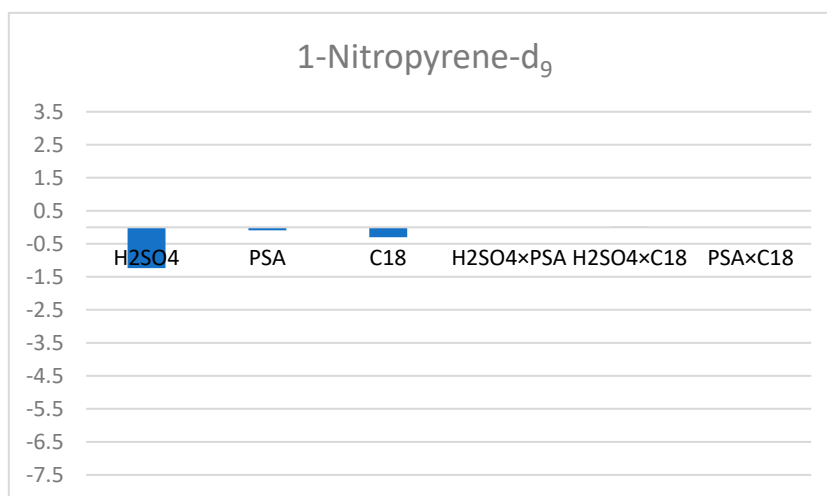
BP-d₁₂

$$\text{BP-d}_{12}=97,7+4,24\times\text{H}_2\text{SO}_4-0,095\times\text{PSA}-$$
$$0,304\times\text{C18}+0,0048\times\text{H}_2\text{SO}_4\times\text{PSA}+0,0111\times\text{H}_2\text{SO}_4\times\text{C18}+0,00024\times\text{PSA}\times\text{C18}$$



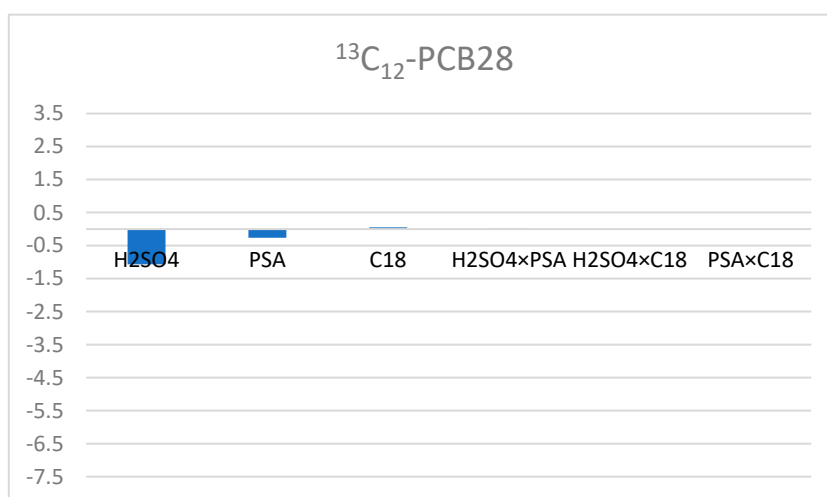
1-
Nitropyrene-
d₉

$$1\text{-Nitropyrene-d}_9 = 97,7 - 1,24 \times \text{H}_2\text{SO}_4 - 0,095 \times \text{PSA} - 0,304 \times \text{C18} + 0,0048 \times \text{H}_2\text{SO}_4 \times \text{PSA} + 0,0111 \times \text{H}_2\text{SO}_4 \times \text{C18} + 0,00024 \times \text{PSA} \times \text{C18}$$



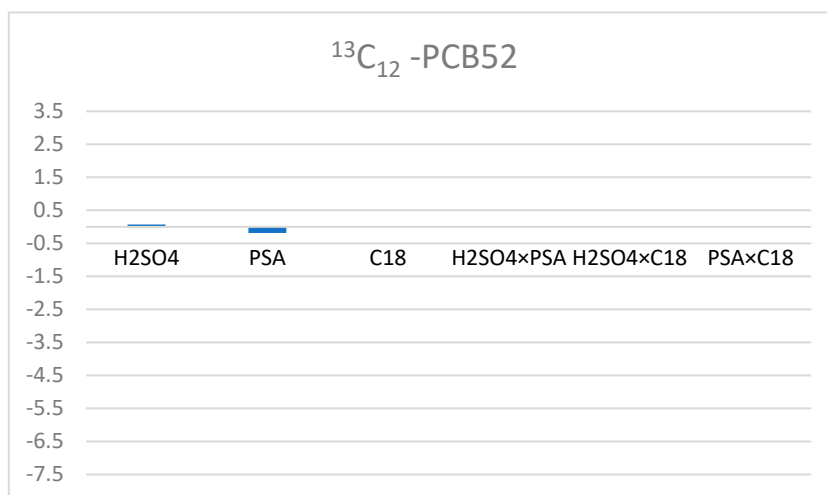
¹³C₁₂-PCB28

$$^{13}\text{C}_{12}\text{-PCB28} = 126,0 - 1,07 \times \text{H}_2\text{SO}_4 - 0,262 \times \text{PSA} + 0,051 \times \text{C18} + 0,01321 \times \text{H}_2\text{SO}_4 \times \text{PSA} - 0,00550 \times \text{H}_2\text{SO}_4 \times \text{C18} - 0,000312 \times \text{PSA} \times \text{C18}$$



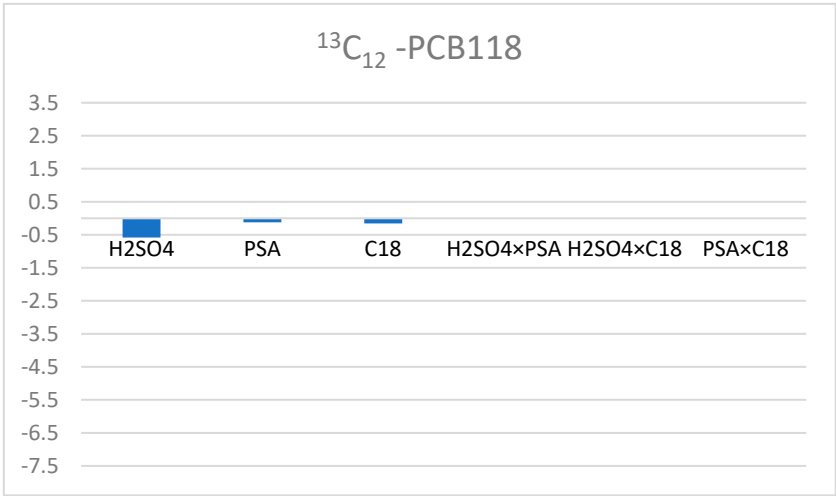
¹³C₁₂-PCB52

$$^{13}\text{C}_{12}\text{-PCB52} = 116,2 + 0,07 \times \text{H}_2\text{SO}_4 - 0,187 \times \text{PSA} + 0,018 \times \text{C18} + 0,00608 \times \text{H}_2\text{SO}_4 \times \text{PSA} - 0,00712 \times \text{H}_2\text{SO}_4 \times \text{C18} + 0,000137 \times \text{PSA} \times \text{C18}$$



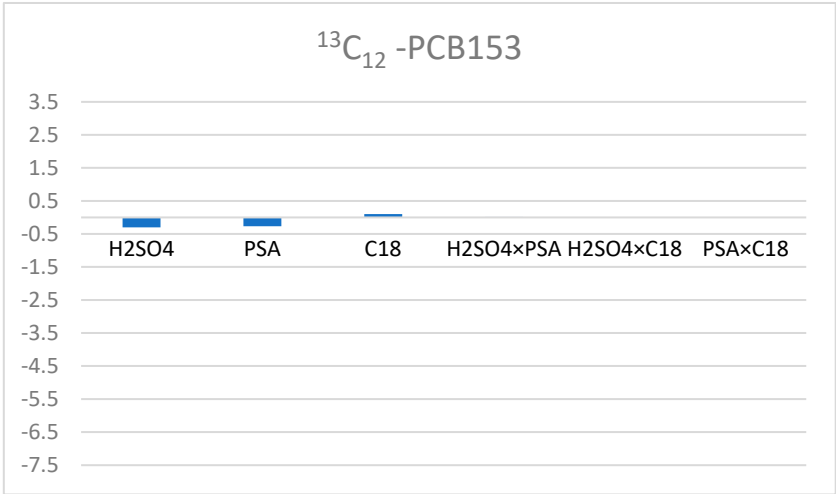
¹³C₁₂-PCB118

$$^{13}\text{C}_{12}\text{-PCB118}=134,9-0,585\times\text{H}_2\text{SO}_4-0,1209\times\text{PSA}-0,1592\times\text{C18}+0,00427\times\text{H}_2\text{SO}_4\times\text{PSA}+0,00982\times\text{H}_2\text{SO}_4\times\text{C18}+0,000030\times\text{PSA}\times\text{C18}$$



¹³C₁₂-PCB153

$$^{13}\text{C}_{12}\text{-PCB153}=133,38-0,299\times\text{H}_2\text{SO}_4-0,2655\times\text{PSA}+0,1009\times\text{C18}+0,01404\times\text{H}_2\text{SO}_4\times\text{PSA}-0,00865\times\text{H}_2\text{SO}_4\times\text{C18}-0,000224\times\text{PSA}\times\text{C18}$$



$^{13}\text{C}_{12}\text{-PCB180}$ $^{13}\text{C}_{12}\text{-PCB180} = 122,2 + 3,10 \times \text{H}_2\text{SO}_4 - 0,236 \times \text{PSA} + 0,133 \times \text{C18} + 0,0026 \times \text{H}_2\text{SO}_4 \times \text{PSA} - 0,0186 \times \text{H}_2\text{SO}_4 \times \text{C18} + 0,00016 \times \text{PSA} \times \text{C18}$

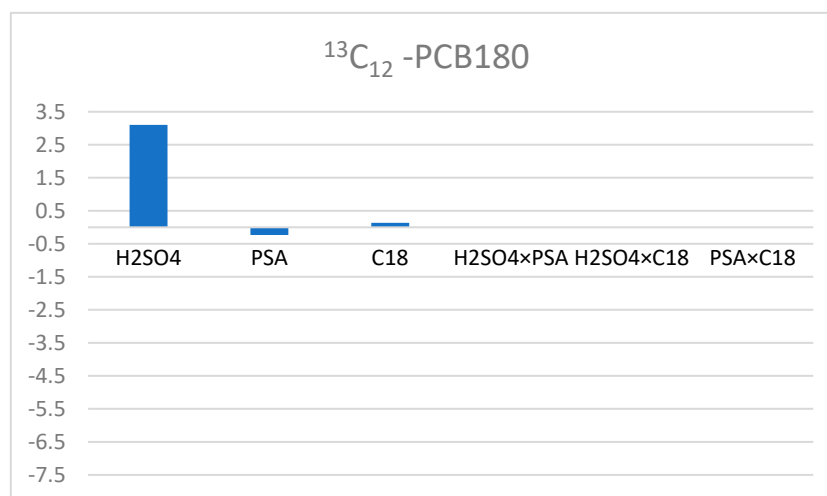


Table S2. Extraction recovery percentages of surrogates from “*Rio Grande*”, “*Beefsteak*” and “*Vine*” cultivars. Extraction conditions are detailed in paragraph 2.4.4 of the manuscript.

	Rio Grande	Beefsteak	Vine
BaA -d₁₂	100	102	93
Chr -d₁₂	86	102	81
BbFl -d₁₂	102	91	89
BkFl -d₁₂	108	110	102
BaP -d₁₂	75	62	61
Ind -d₁₂	80	76	86
DBA -d₁₄	81	88	97
BP -d₁₂	60	62	62
1-nitropyrene-d₉	60	74	83
$^{13}\text{C}_{12}\text{-PCB28}$	86	91	91
$^{13}\text{C}_{12}\text{-PCB52}$	91	95	98
$^{13}\text{C}_{12}\text{-PCB118}$	105	104	109
$^{13}\text{C}_{12}\text{-PCB153}$	107	110	108
$^{13}\text{C}_{12}\text{-PCB180}$	110	111	110