

Supplementary Material

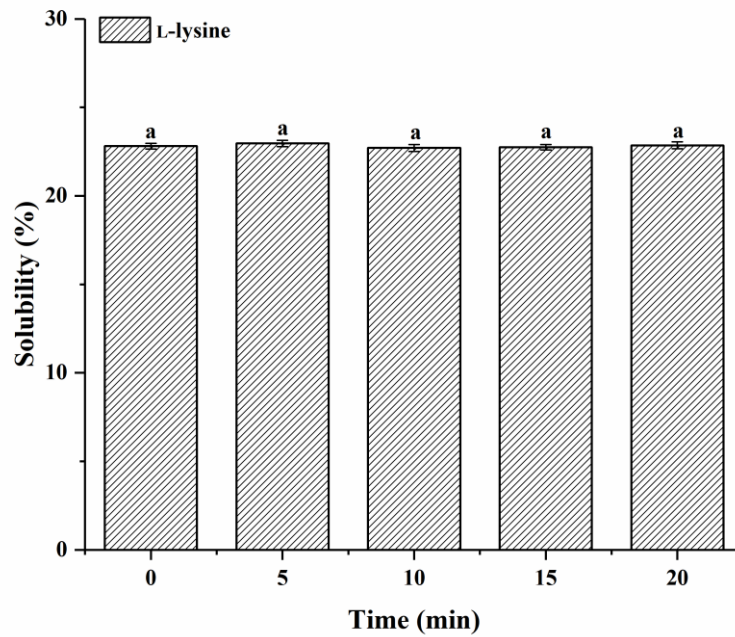


Figure S1. Effect of L-lysine alone on the solubility of myofibrillar proteins. The letters above the bars indicate a significant difference ($p < 0.05$).

Table S1. The probability level (p -value) for experimental main factor (ultrasound time and L-lysine) and their interaction effects on MP.

Experimental factor and interaction of experimental factors	Solubility	turbidity	Particle size of D ₄₃	Reactive sulfhydryl	2-pentanone	2-hexanone	2-heptanone	2-octanone
ultrasound time	<0.05	<0.05	<0.05	<0.05	>0.05	>0.05	>0.05	>0.05
L-lysine	<0.05	<0.05	<0.05	<0.05	<0.05	<0.05	<0.05	<0.05
ultrasound time × L-lysine	<0.05	<0.05	<0.05	<0.05	>0.05	>0.05	>0.05	>0.05