

Supplementary material

Table S1. The resistant starch content of starch samples

Samples	PSn	PSa	PSpa
Resistant starch content (%)	8.2±0.2 ^a	8.9±0.2 ^a	29.8±0.7 ^b

a, b, Different letters are significantly different ($P < 0.05$).

PSn, Native pea starch; PSa, Pea starch treated with autoclaving; PSpa, Pea starch treated with debranching and autoclaving.

Figure S1. SEM images of native and treated pea starches. PSn, Native pea starch; PSa, Pea starch treated with autoclaving; PSpa, Pea starch treated with debranching and autoclaving.

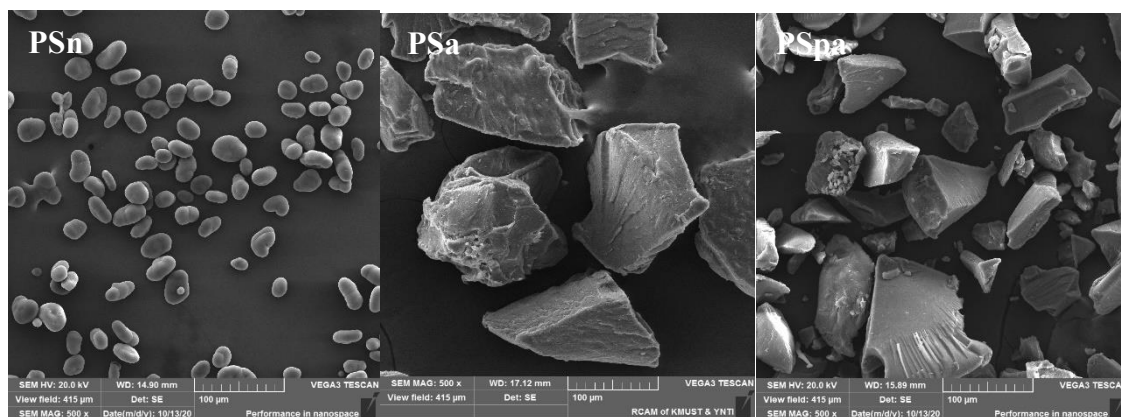


Figure S2. The hardness changes of bread samples during storage time.

