

Table S1. Estimated coefficients of the fitted quadratic polynomial equation for the response of mean fibre diameter; X₁: biopolymer (%), X₂: voltage (kV), X₃: flow rate (mL/h), and X₄: spinning distance (mm); (R² = 98.58%, Adjusted-R² = 97.15%)

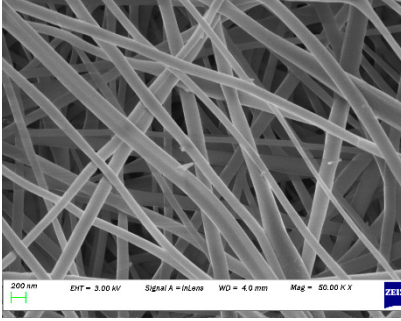
Source	Coefficients	T value	DF	Mean Square	F value	P Value	Sig.
Model			14	5.19	68.11	0.000	0.05
Constant	13.41	108.66				0.000	0.05
X_1	-2.22	-27.84	1	59.01	775.17	0.000	0.05
X_2	-0.48	-6.04	1	2.78	36.52	0.000	0.05
X_3	0.28	3.56	1	0.97	12.69	0.003	0.05
X_4	-2.2	-2.75	1	0.58	7.58	0.016	0.05
X_1^2	-0.62	-5.67	1	2.45	32.18	0.000	0.05
X_2^2	-0.43	-3.99	1	1.21	15.89	0.001	0.05
X_3^2	-1.07	-9.88	1	7.44	97.69	0.000	0.05
X_4^2	-0.31	-2.89	1	0.64	8.35	0.012	0.05
X_1X_2	-0.02	-0.16	1	0.00	0.02	0.877	NS
X_1X_3	0.04	0.28	1	0.01	0.08	0.782	NS
X_1X_4	-0.05	-0.33	1	0.01	0.11	0.746	NS
X_2X_3	0.24	1.74	1	0.23	3.02	0.104	NS
X_2X_4	0.14	1.03	1	0.08	1.06	0.321	NS
X_3X_4	0.20	1.47	1	0.16	2.15	0.164	NS
Error			14	0.08			
Lack of fit			10	0.09	1.72	0.317	NS
Pure error			4	0.05			

NS= not significant

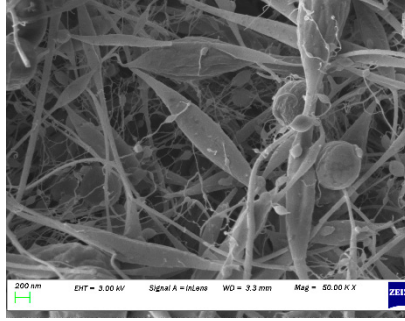
Table S2. Estimated coefficients of the fitted quadratic polynomial equation for the response of mean diameter of fibre defects; X₁: biopolymer (%), X₂: voltage (kV), X₃: flow rate (mL/h), and X₄: spinning distance (mm); (R² = 99.84%, Adjusted-R² = 99.67%)

Source	Coefficients	T value	DF	Mean Square	F value	P Value	Sig.
Model			14	69.43	427.56	0.000	0.05
Constant	9.36	51.96				0.000	0.05
X_1	7.64	65.65	1	699.77	4309.36	0.000	0.05
X_2	-0.44	-3.74	1	2.27	13.97	0.002	0.05
X_3	0.65	5.56	1	5.02	30.89	0.000	0.05
X_4	-0.40	-3.43	1	1.92	11.79	0.004	0.05
X_1^2	-0.62	-3.91	1	2.49	15.31	0.002	0.05
X_2^2	3.93	24.83	1	100.14	616.68	0.000	0.05
X_3^2	4.33	27.38	1	121.74	749.67	0.000	0.05
X_4^2	3.56	22.53	1	82.41	507.50	0.000	0.05
X_1X_2	-0.06	-0.31	1	0.02	0.10	0.760	NS
X_1X_3	-0.04	-0.21	1	0.01	0.04	0.837	NS
X_1X_4	0.45	2.21	1	0.80	4.89	0.044	0.05
X_2X_3	-0.09	-0.46	1	0.035	0.21	0.652	NS
X_2X_4	-1.04	-5.14	1	4.29	26.40	0.000	0.05
X_3X_4	-0.45	-2.24	1	0.81	5.00	0.042	0.05
Error			14	0.16			
Lack of fit			10	0.17	1.09	0.509	NS
Pure error			4	0.15			

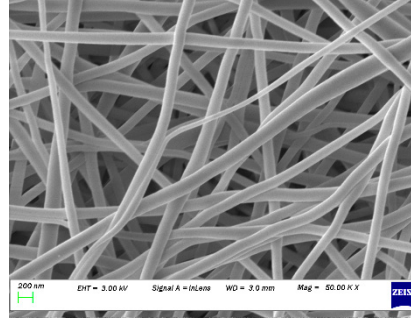
NS= not significant



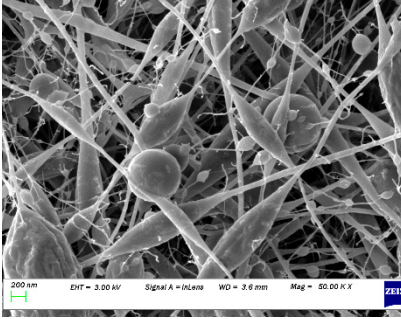
1



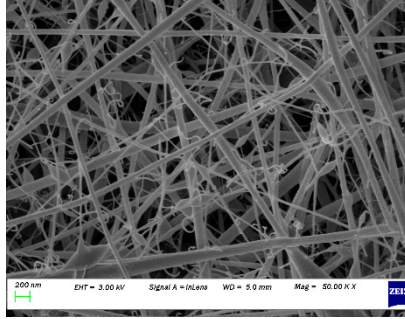
2



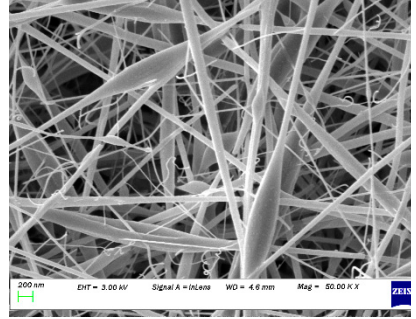
3



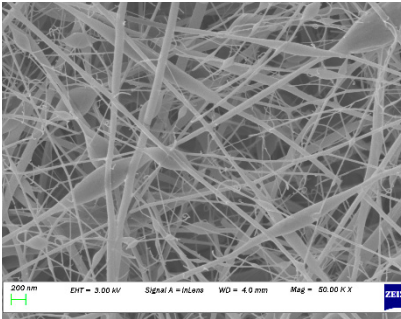
4



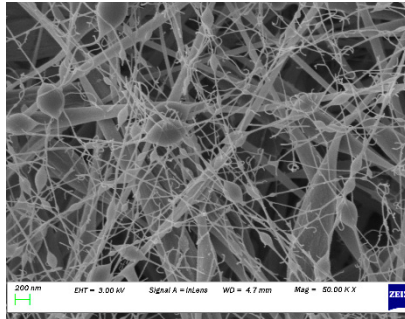
5



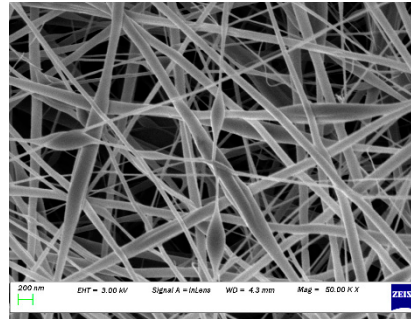
6



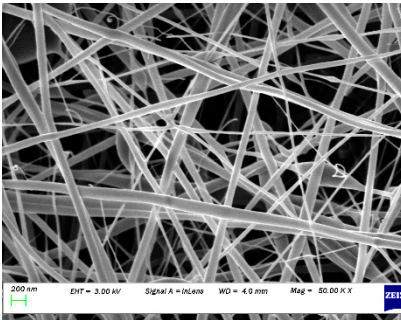
7



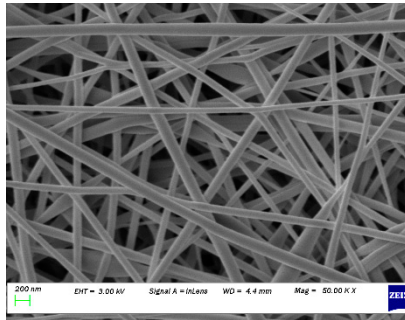
8



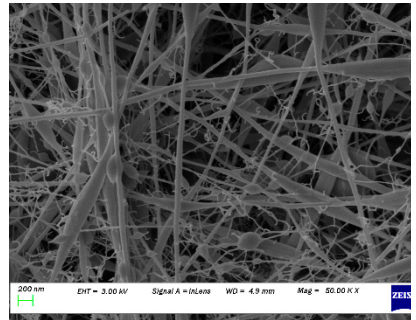
9



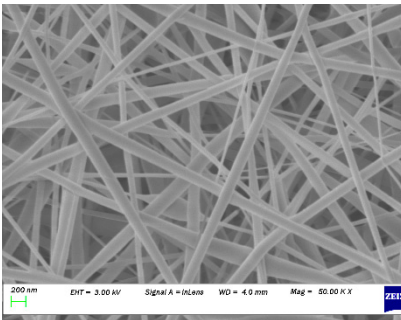
10



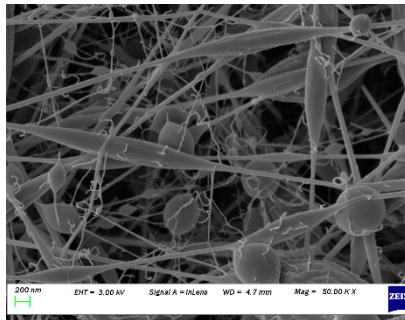
11



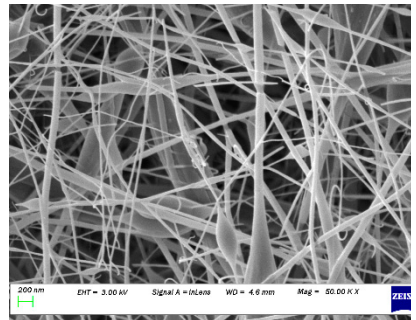
12



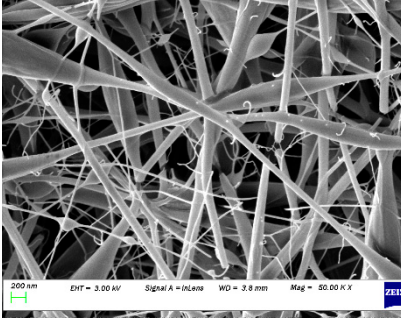
13



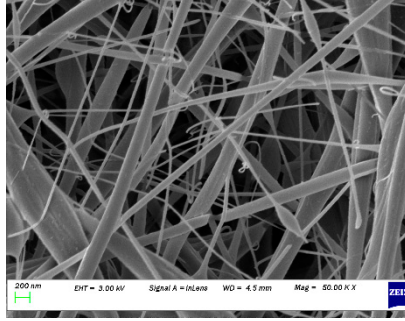
14



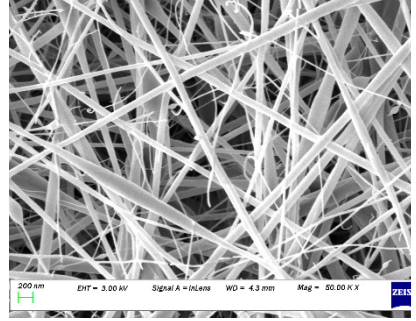
15



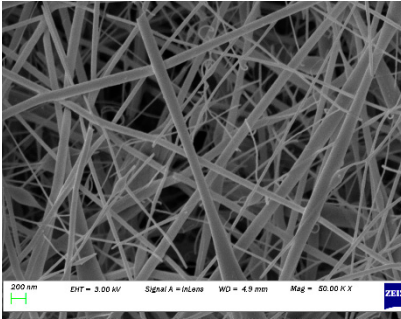
16



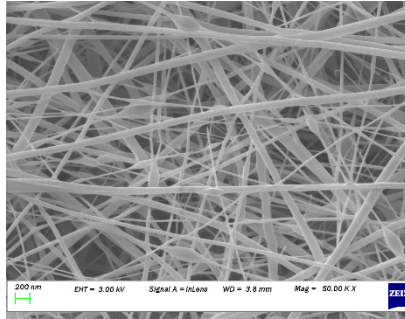
17



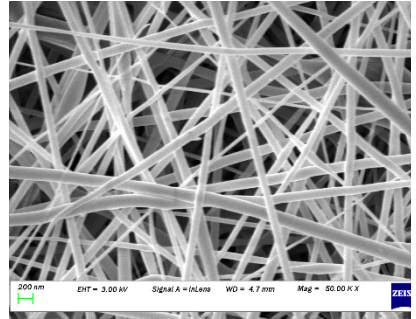
18



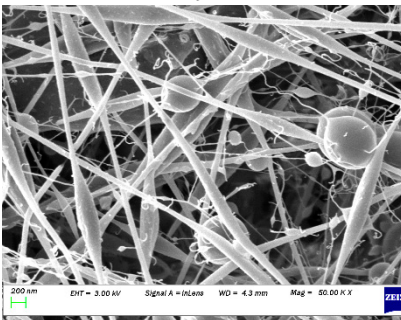
19



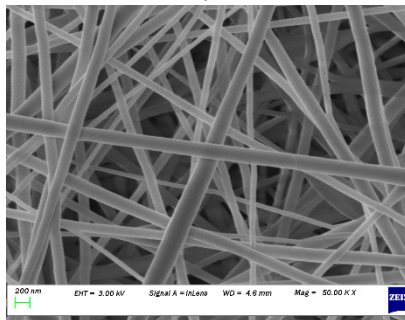
20



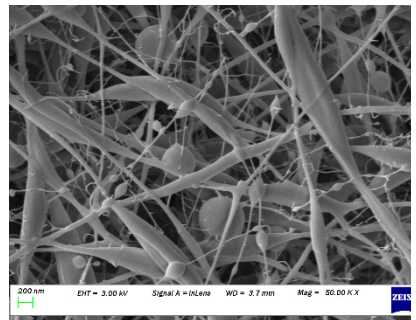
21



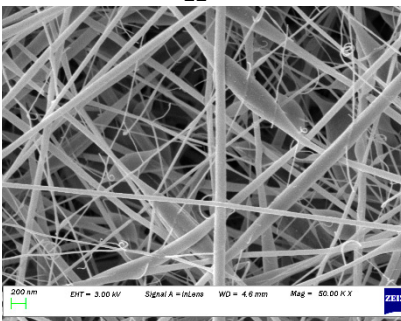
22



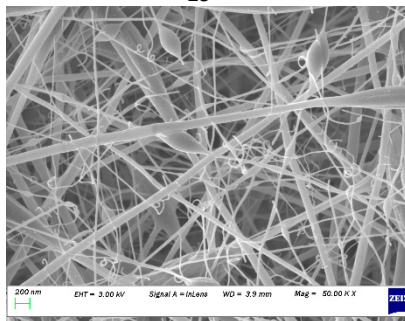
23



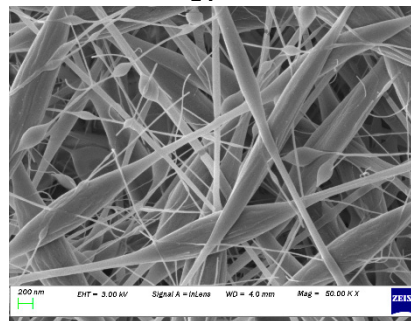
24



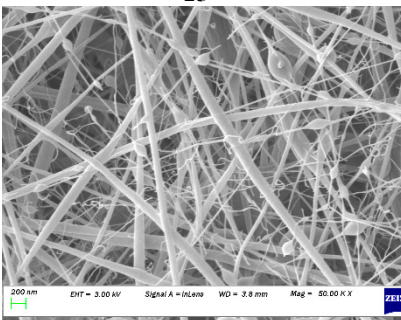
25



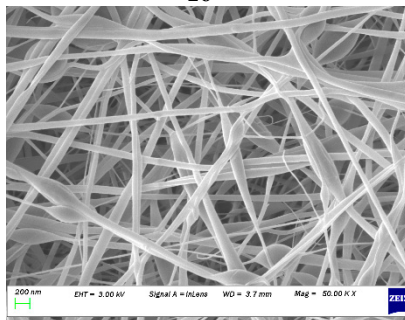
26



27

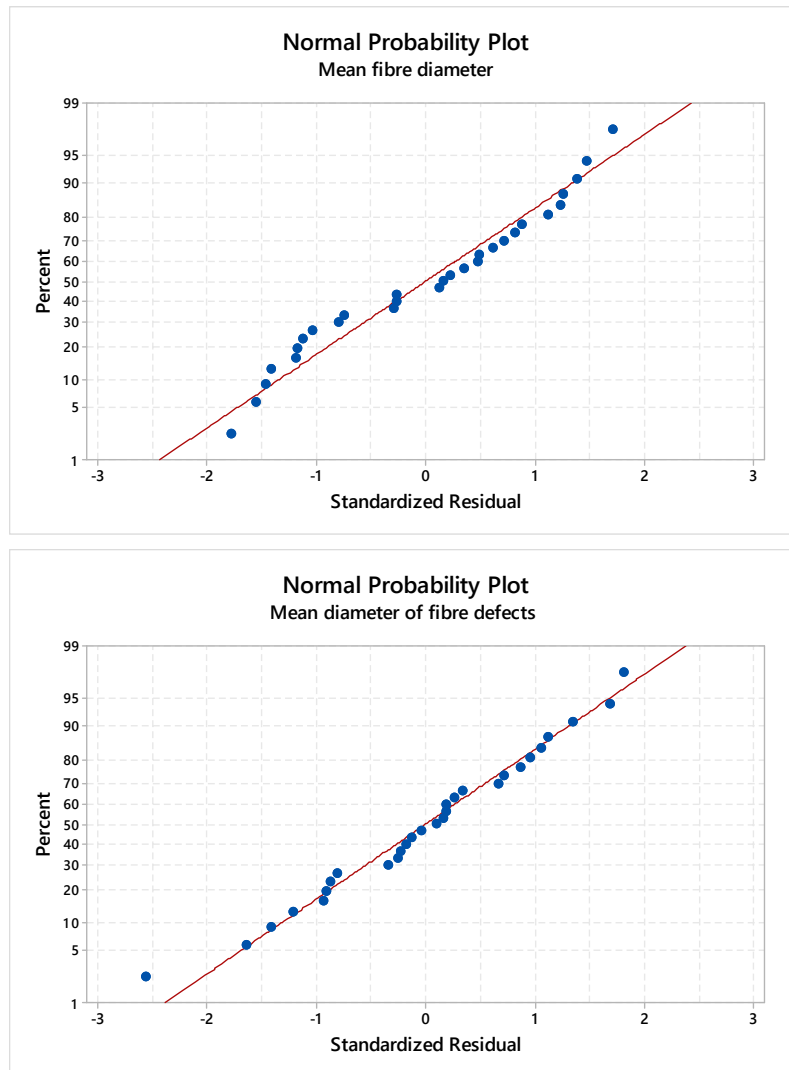


28



29

Figure S1. SEM micrographs of the 3DENS



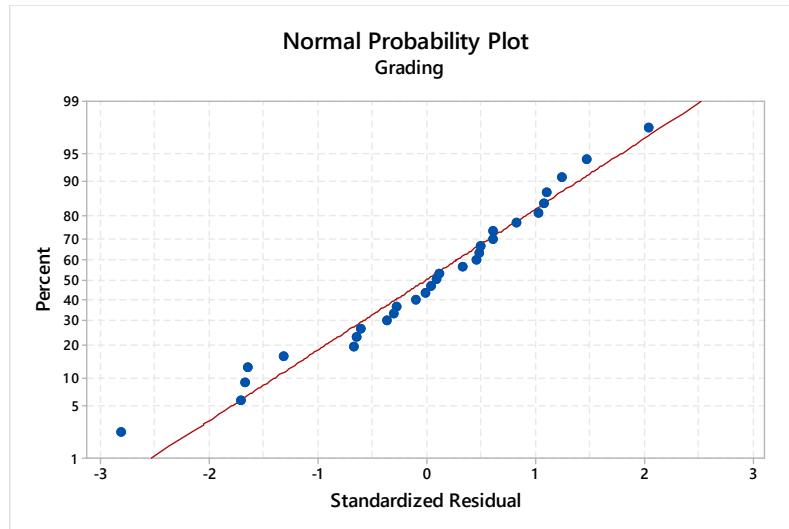
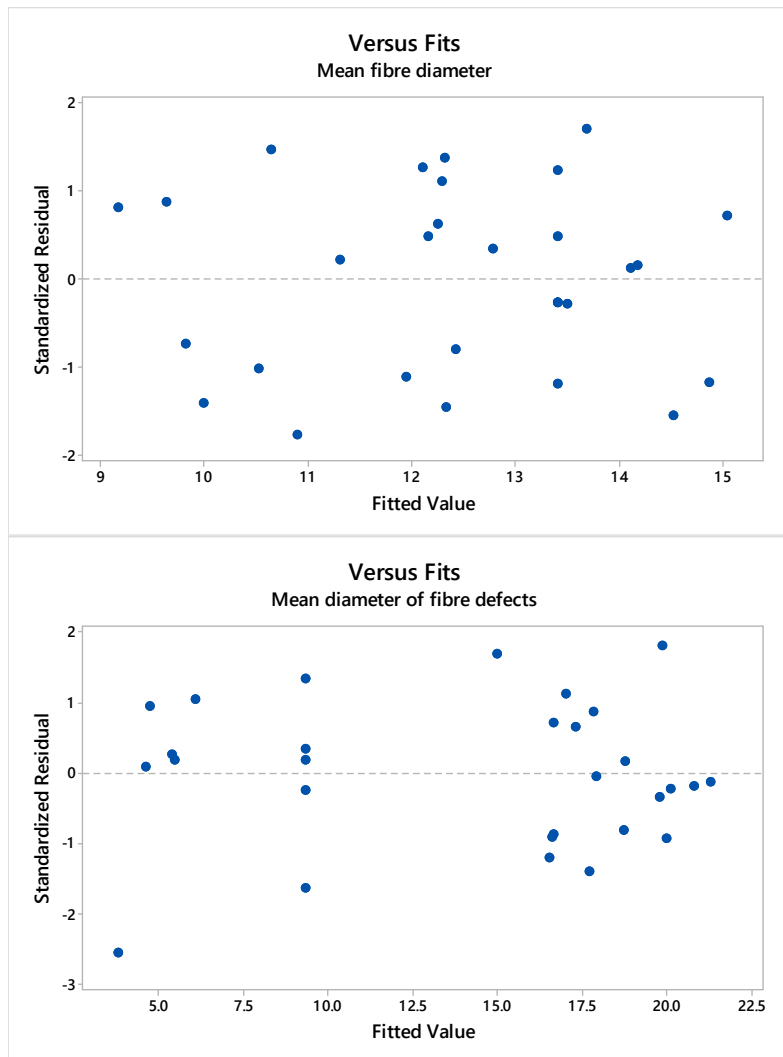


Figure S2. Normal probability plot for mean fibre and mean diameter of fibre defects



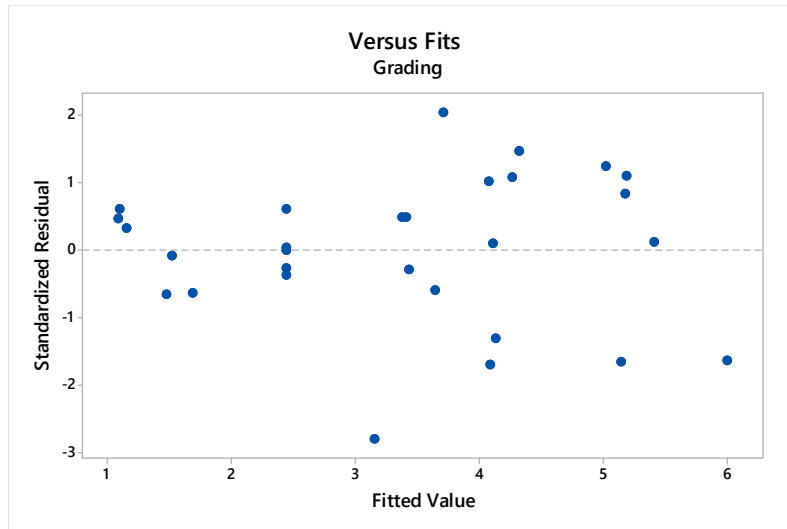
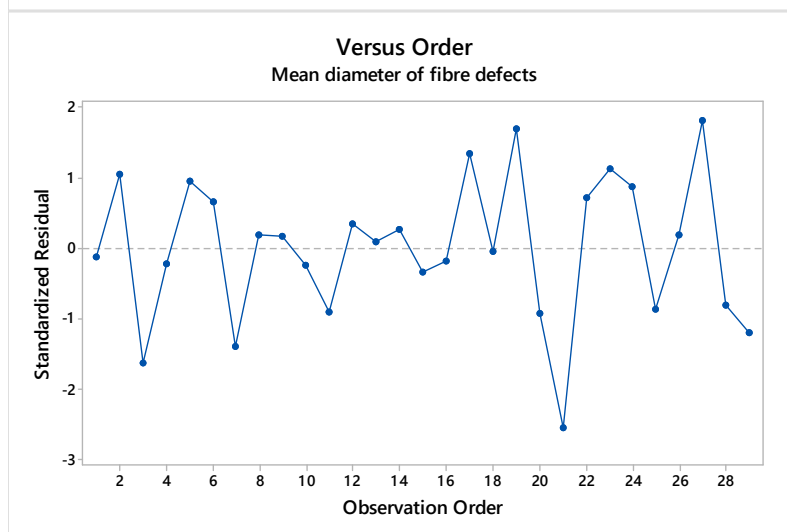
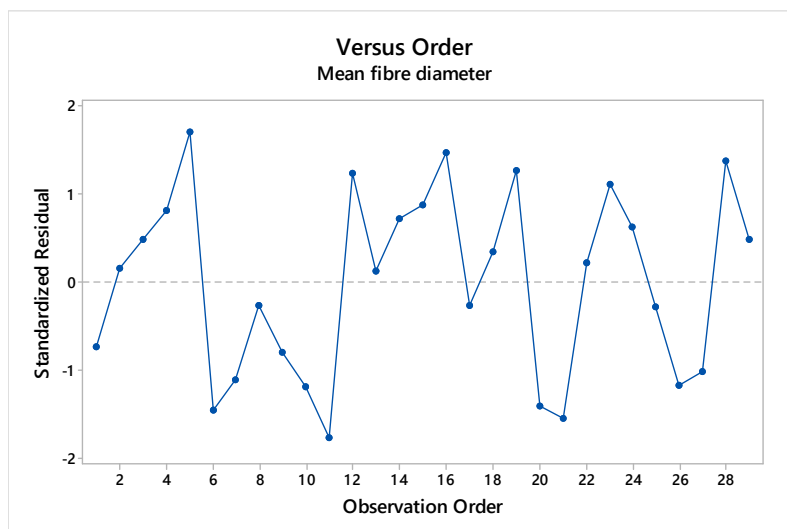


Figure S3. Residual versus fit plot for mean fibre and mean diameter of fibre defects



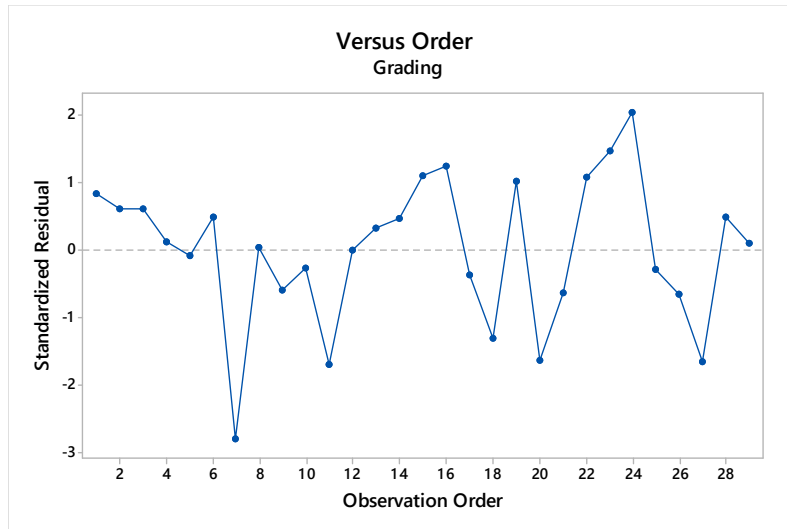


Figure S4. Residual versus order plot for mean fibre and mean diameter of fibre defects