

Figure S1. Chromatogram of bromazepam

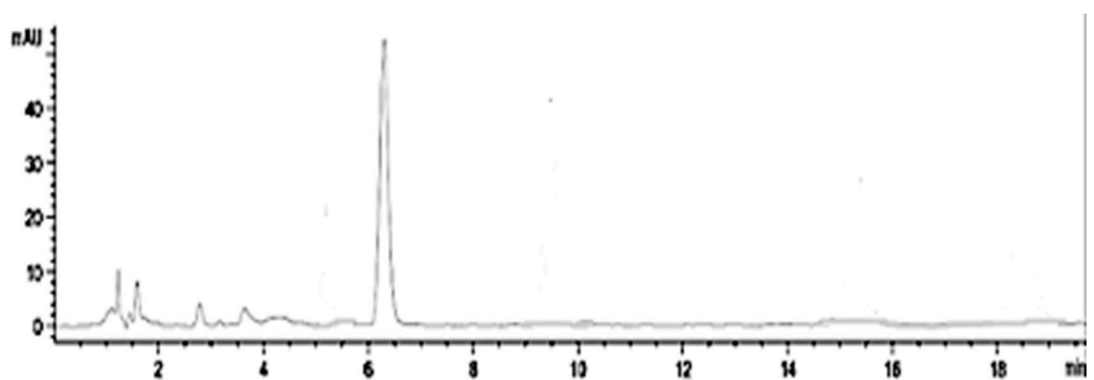


Figure S2. Chromatogram of clonazepam

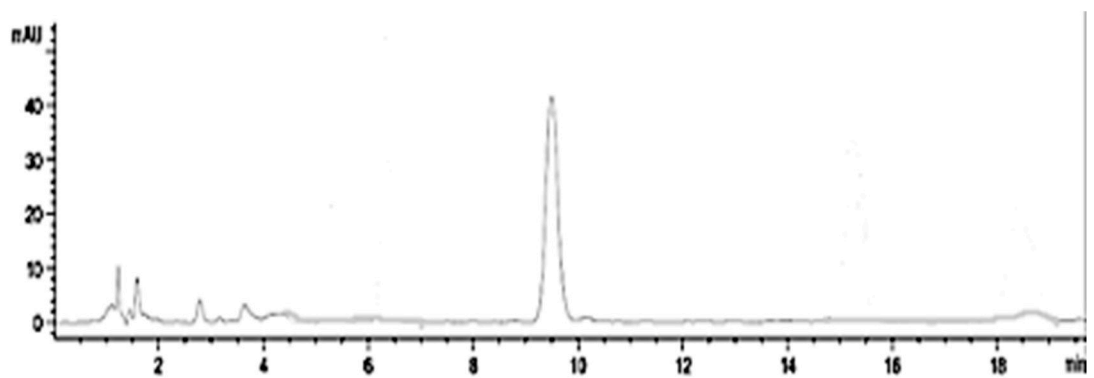
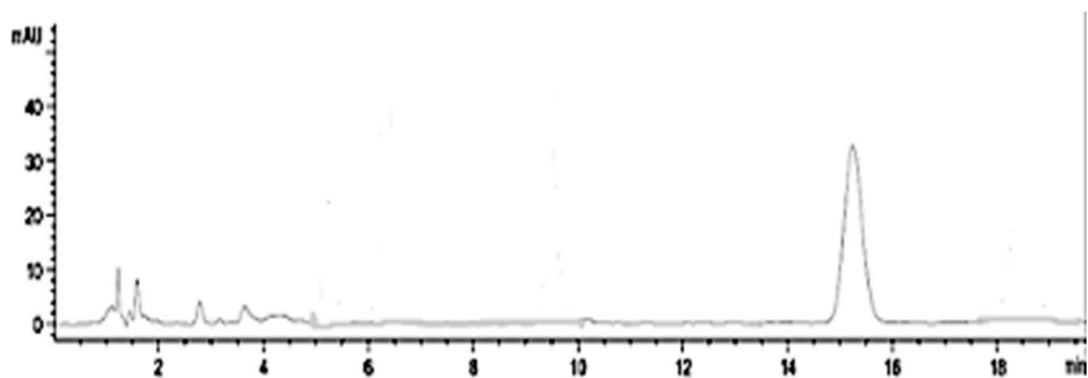
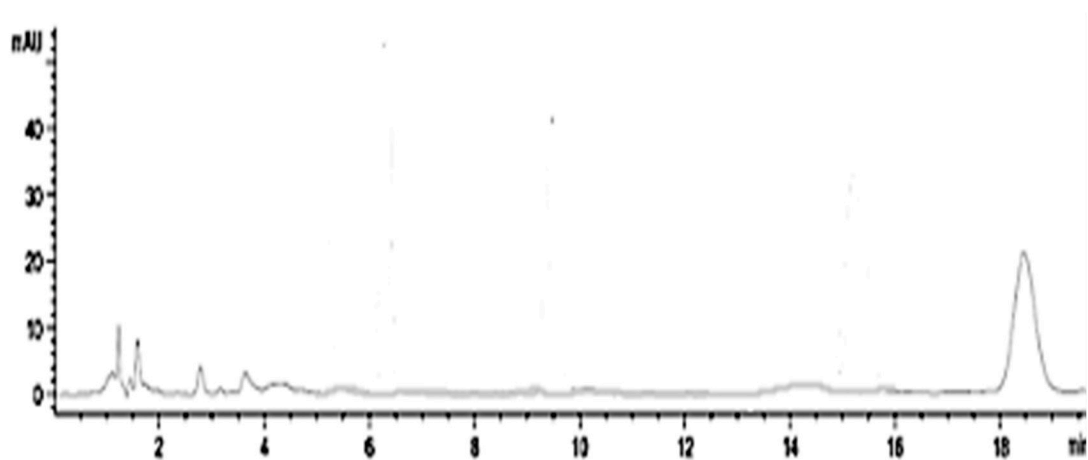


Figure S3. Chromatogram of lorazepam



**Figure S4. Chromatogram of nordiazepam**



**Figure S5. Chromatogram of diazepam**

All chromatograms achieved under the optimum conditions of mobile phase containing 50% of 20 mmol L<sup>-1</sup> phosphate buffer at pH = 7 and 50% methanol, flow rate at 1.0 ml min<sup>-1</sup>, wavelength at 214 nm and 40 °C column temperature.

**Table S1.** Short and long term storage recoveries (%) and RSD

analytes	Storage time	Recovery %	RSD
Bromazepam	Short	98.8	0.219
	Long	99.7	0.374
Clonazepam	Short	99.4	0.187
	Long	100.2	0.432
Lorazepam	Short	99.1	0.176
	Long	102.8	1.981
Nordiazepam	Short	100.2	0.543
	Long	103.1	1.572
Diazepam	Short	99.8	0.441
	Long	100.1	0.518