

Supplemental Information

Table S1. An example of the pairwise PCC comparison sets that were calculated for each sample. Table S1A shows the PCC scores for the EBR-ELS samples. Table S1B shows the ELR-ELS PCC scores. The PCC score for each comparison set was then compared using a student t-test to determine similarity. The results to the Student's t- test are shown in Table C.

A. EBR-ELS	EBR 1	EBR 2	EBR 3	EBR 4	EBR 5	EBR 6
EBR 1	0.454077	0.471931	0.402718	0.470088	0.62021	0.655799
EBR 2	0.517582	0.528813	0.464086	0.587319	0.69579	0.751857
EBR 3	0.62819	0.647237	0.590118	0.478848	0.71836	0.629637
EBR 4	0.507645	0.508044	0.485478	0.542547	0.616457	0.591744
EBR 5	0.522374	0.523894	0.502171	0.532363	0.621469	0.578498
EBR 6	0.304861	0.315543	0.277589	0.364441	0.425948	0.478771

B. ELR-ELS	ELR 1	ELR 2	ELR 3
ELR 1	0.931176	0.834695	0.951059
ELR 2	0.95478	0.88415	0.969477
ELR 3	0.942879	0.873696	0.929913
ELR 4	0.547786	0.600144	0.545886
ELR 5	0.540027	0.595589	0.534723
ELR 6	0.616389	0.557093	0.637518

C. T-test data	Variable 1	Variable 2
Mean	0.528125	0.747054
Variance	0.012558	0.032955
Observations	36	18
Hypothesized Mean Difference	0	
df	24	
t Stat	-4.68928	
P(T<=t) one-tail	4.58E-05	
t Critical one-tail	1.710882	
P(T<=t) two-tail	9.15E-05	
t Critical two-tail	2.063899	
Designation	Lube Preferred	

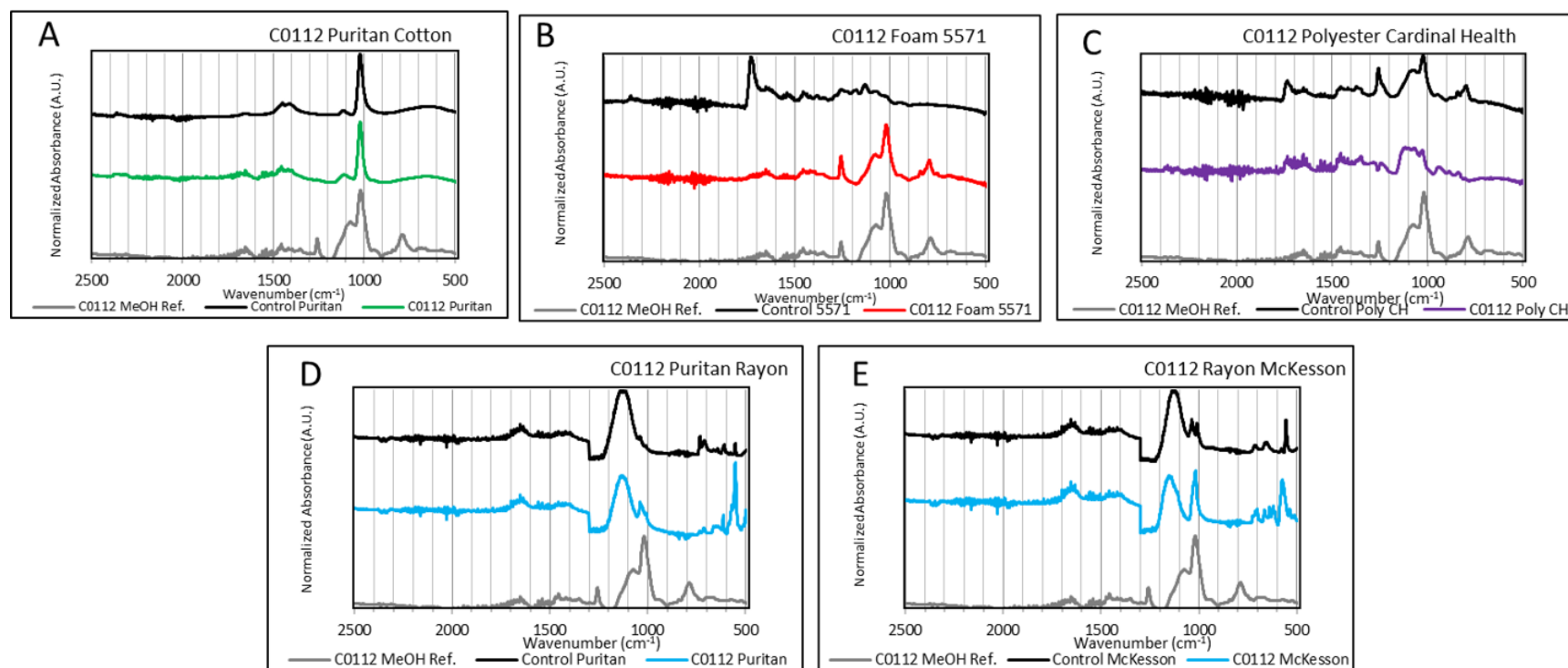


Figure S1. Comparative spectra of blank swab extract (black lines), the C0112 silicone-based lubricant reference (gray lines) and the lubricant extracted by MeOH from the swab in the designated color. The extract from the A) Puritan cotton swab is the green line, B) Foam 5571 swab is the red line, C) Cardinal Health polyester swab is the purple line, and D) & E) Puritan rayon and McKesson rayon swab is the blue line.

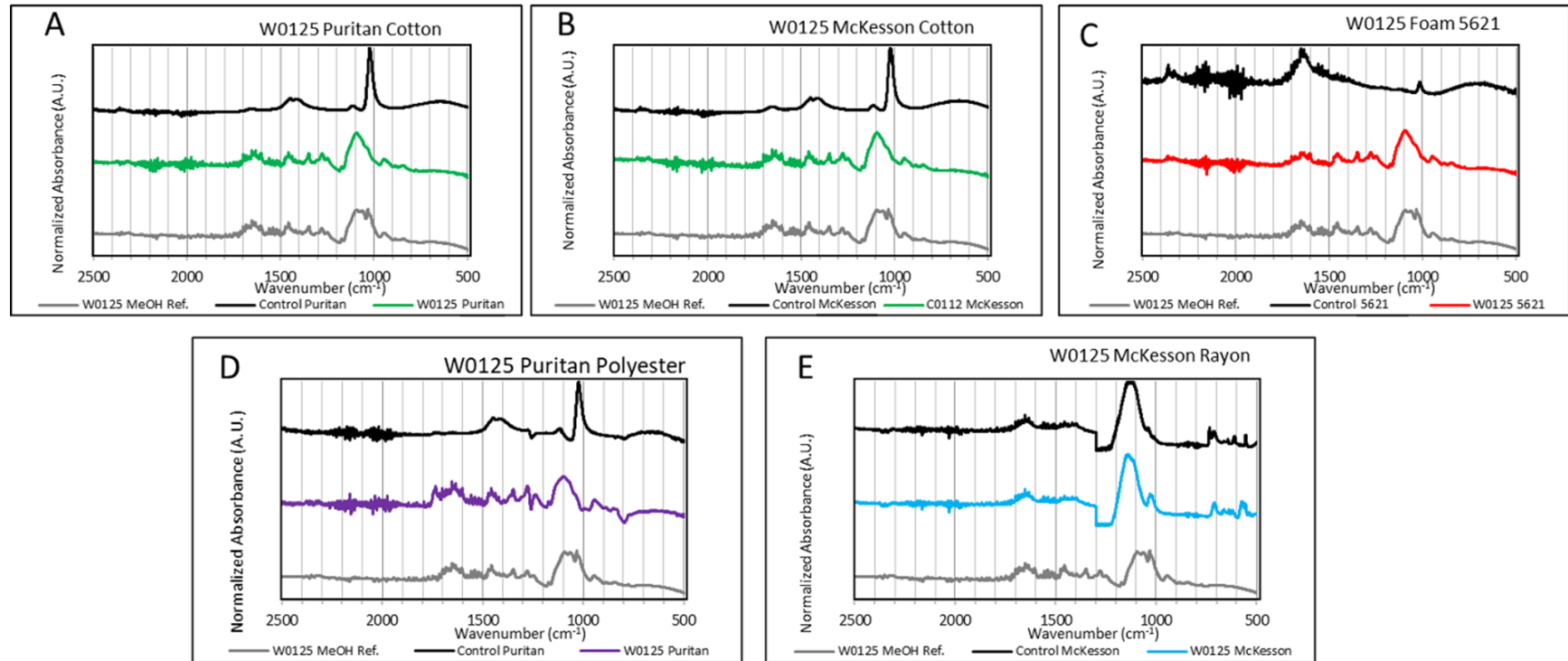


Figure S2. Comparative spectra of blank swab extract (black lines), the W0125 water-based lubricant reference (gray lines) and the lubricant extracted by MeOH from the swab in the designated color. The extract from the A) and B) Puritan and McKesson cotton swab is the green line, C) Foam 5621 swab is the red line, D) Puritan polyester swab is the purple line, and E) McKesson rayon swab is the blue line.

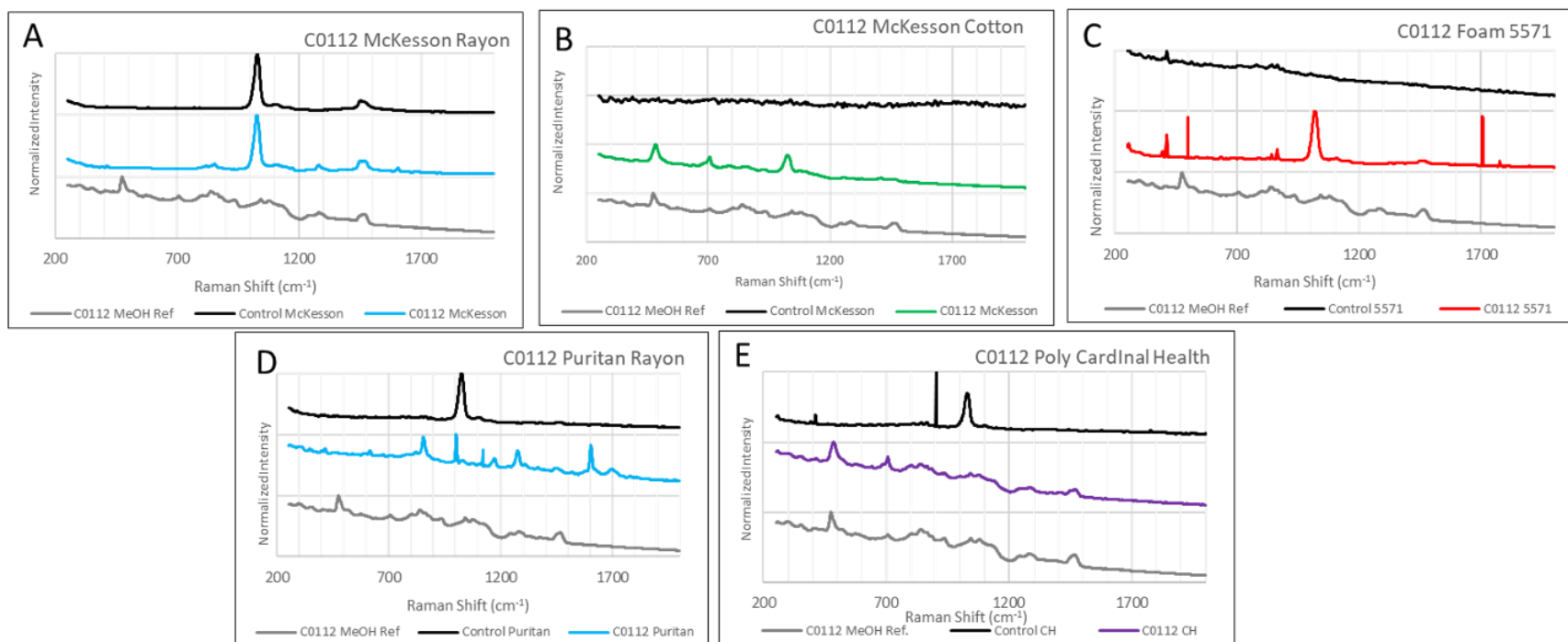


Figure S3. Comparative spectra of blank swab extract (black lines), the C0112 silicone-based lubricant reference (gray lines) and the lubricant extracted by MeOH from the swab in the designated color. The extract from the A) McKesson rayon swab in blue line, B) McKesson cotton swab is the green line, C) Foam 5571 swab is the red line, D) Puritan rayon swab is the blue line, and E) Cardinal Health polyester swab is the purple line.

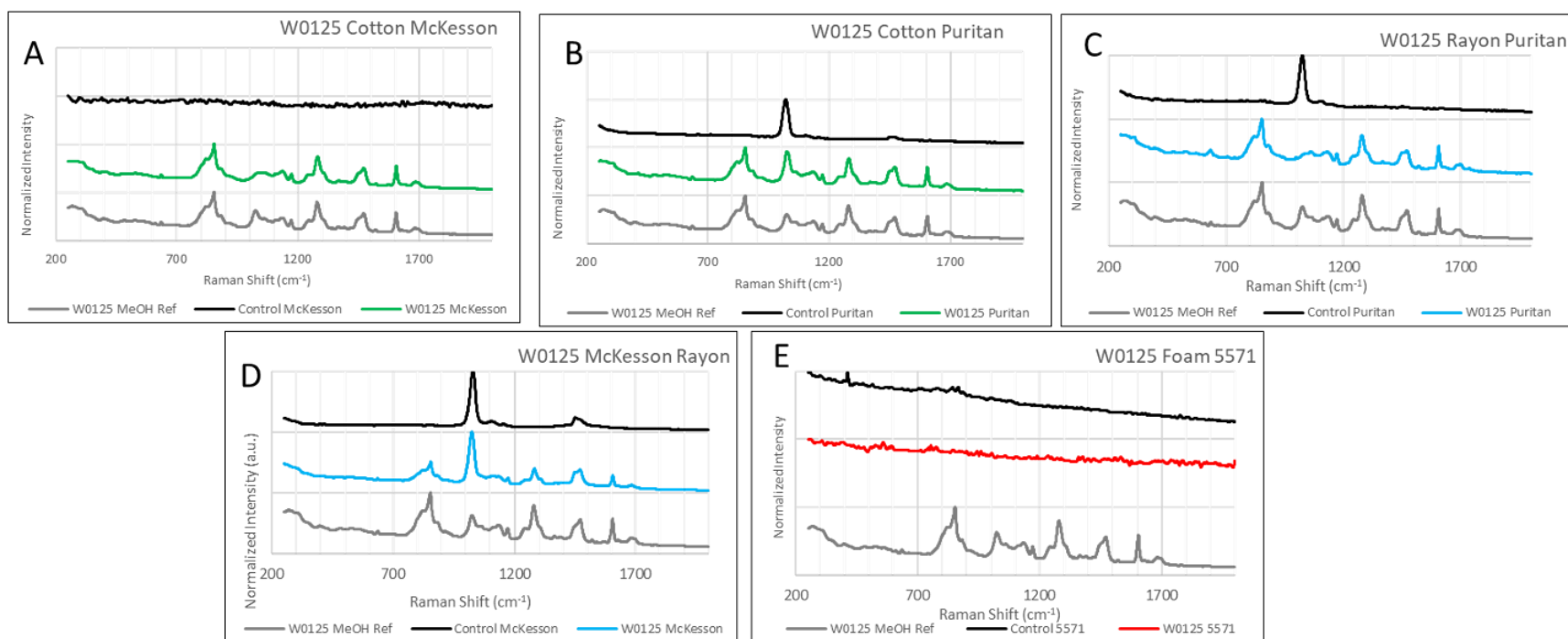


Figure S4. Comparative spectra of blank swab extract (black lines), the W0125 water-based lubricant reference (gray lines) and the lubricant extracted by MeOH from the swab in the designated color. The extract from the A) and B) McKesson and Puritan cotton swab in green line, C) and D) Puritan and McKesson rayon swab is the blue line, and E) Foam 5571 swab is the red line.