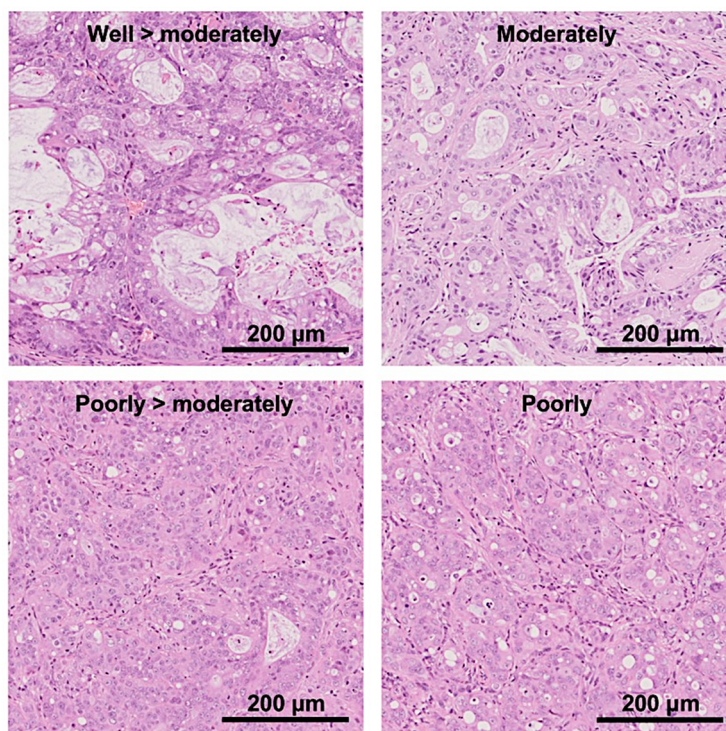


Supplementary Figure S1. A highly polar marine xanthophyll of fucoxanthin. Molecular weight, 658.91.



Supplementary Figure S2. Representative histopathology of pancreatic adenocarcinoma (ADC). Upper left panel, well > moderately differentiated ADC; Upper right, moderately differentiated ADC; Lower left panel, poorly > moderately differentiated ADC; Lower right panel, poorly differentiated ADC. Bar, 200 µm.