

Figure S1. The internal calibration curve ($y=ax+b$) of 2, 6-DIPA using weighted ($1/X$) least-squares linear regression models (A); The corresponding each data of internal calibration curve (B)

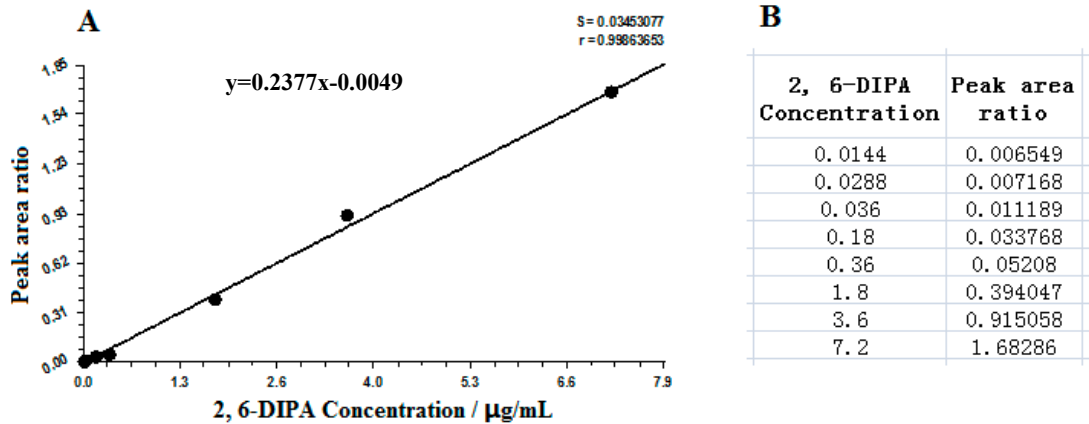


Figure S2. Typical raw GC-MS-SIM chromatogram of high (A: PBAT-1) and low (B: PBAT-2) concentration samples (12.37 min, DEA; 13.77, 2, 6-DIPA; 16.77, TBA)

