

Supplementary Material

1.1 Supplementary Figures

1

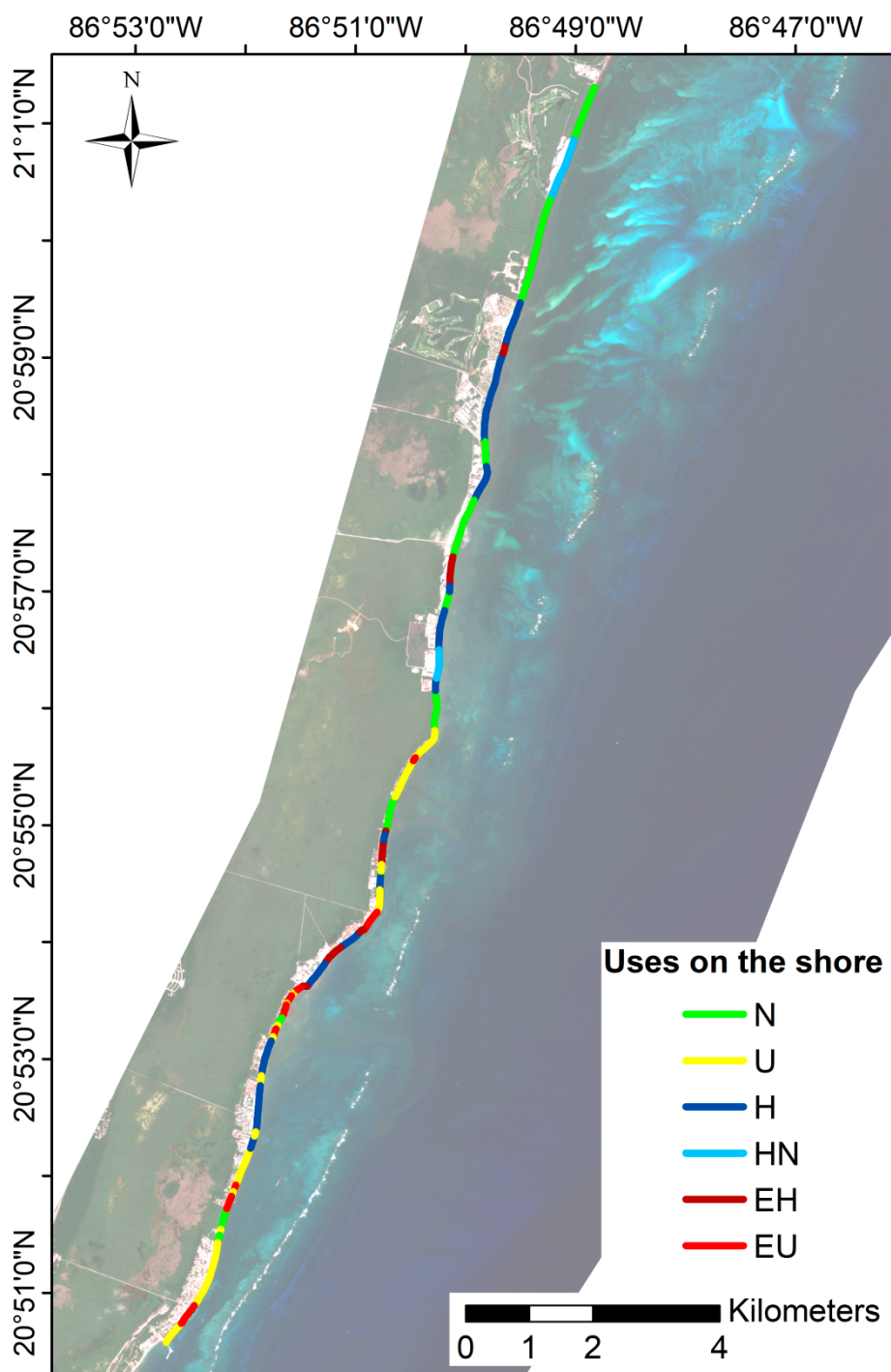


Figure S1. Land use on PNAPM shore (December 2022): N = Natural; U = Urban; H = Hotel; HN = Hotel New; EH = Erosion Hotel; EU = Erosion Urban.

2

3

4

5

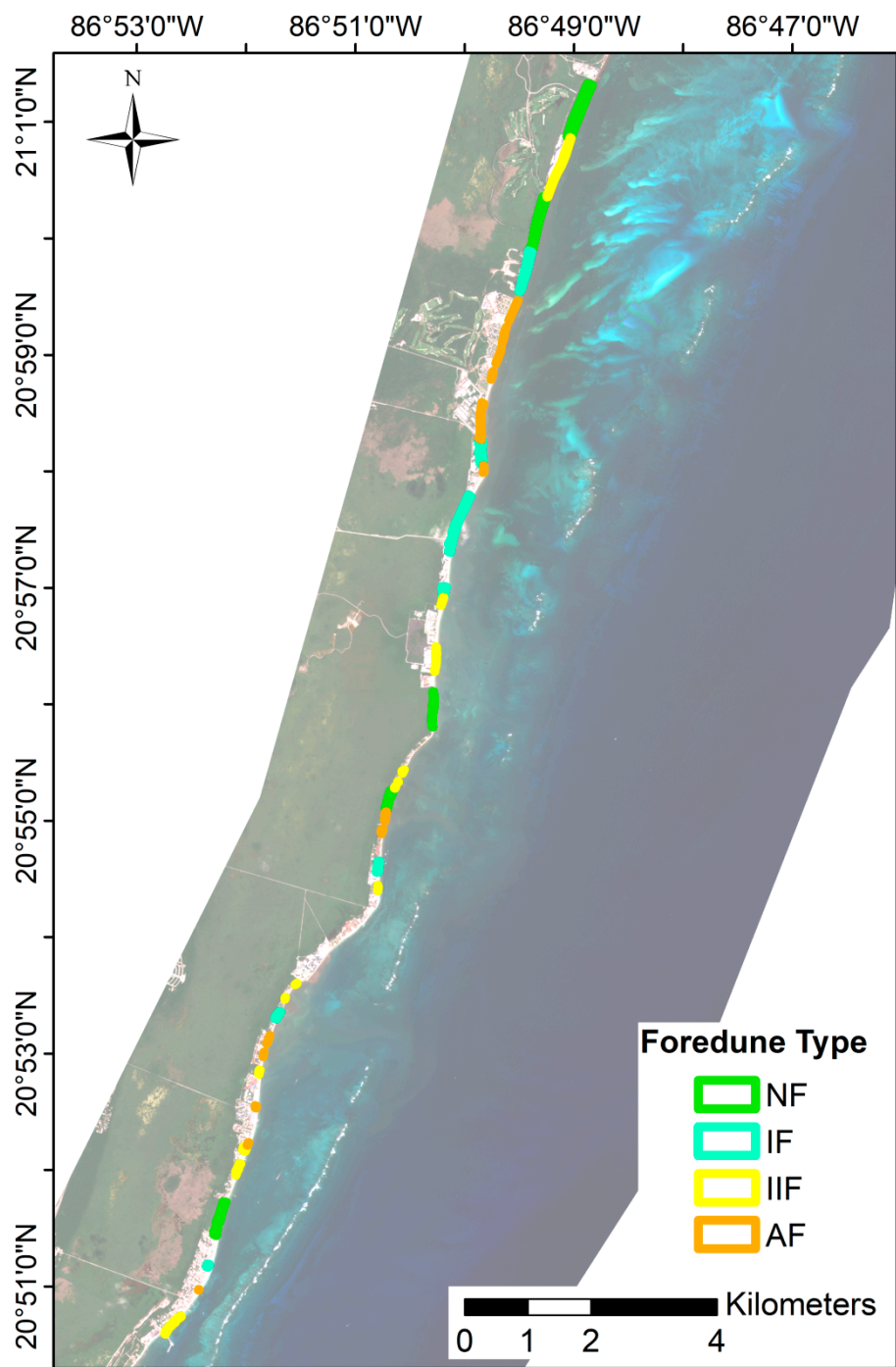


Figure S2. Locations of the foredune areas in PNAPM, January 2023: AF= artificial; NF=natural; IF= interrupted; IIF= interrupted and impacted.

6
7
8
9
10
11
12

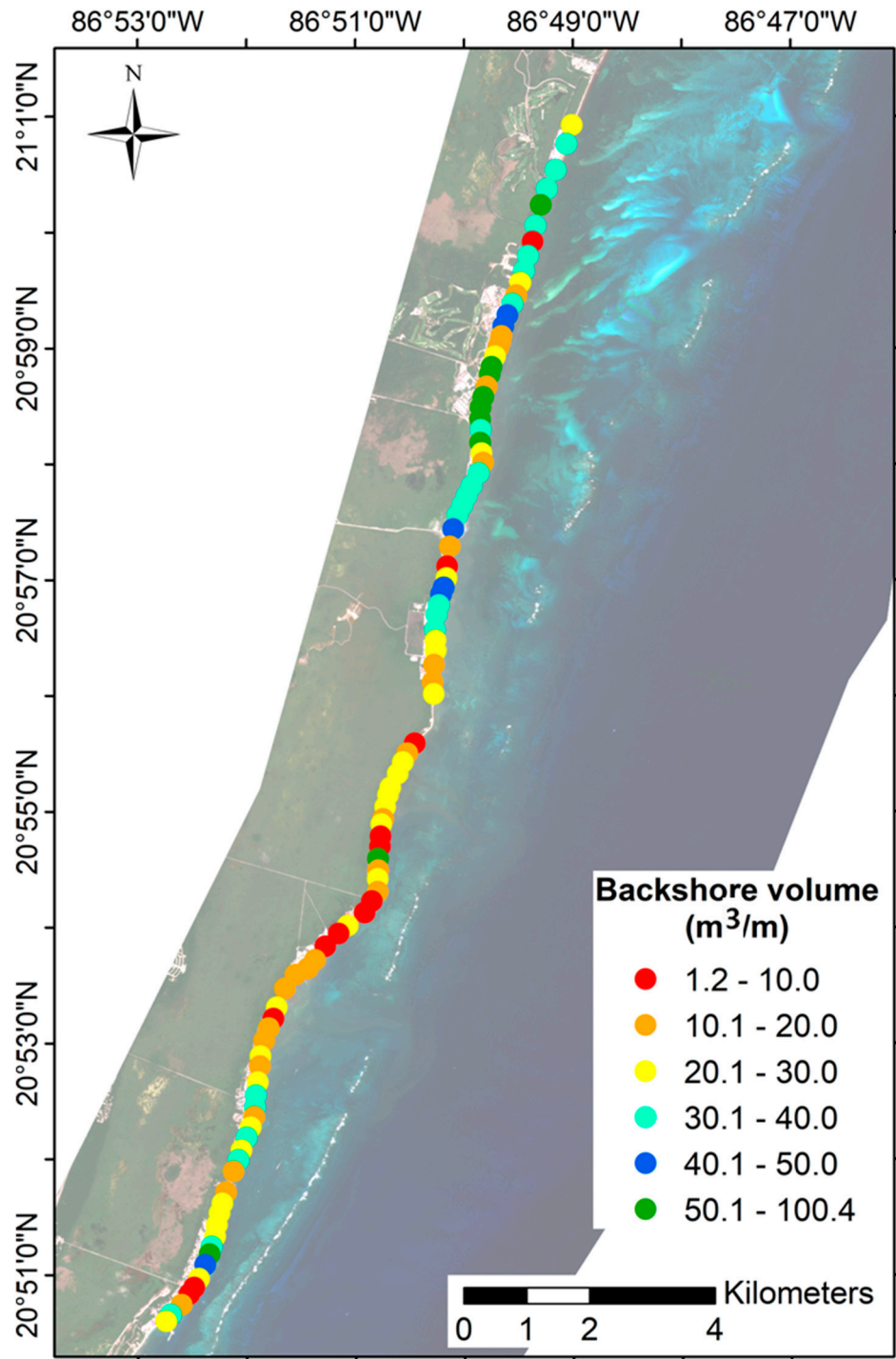


Figure S3. Spatial variation of backshore volume (m^3/m) calculated from beach profile data in PNAPM, winter 2022/2023.

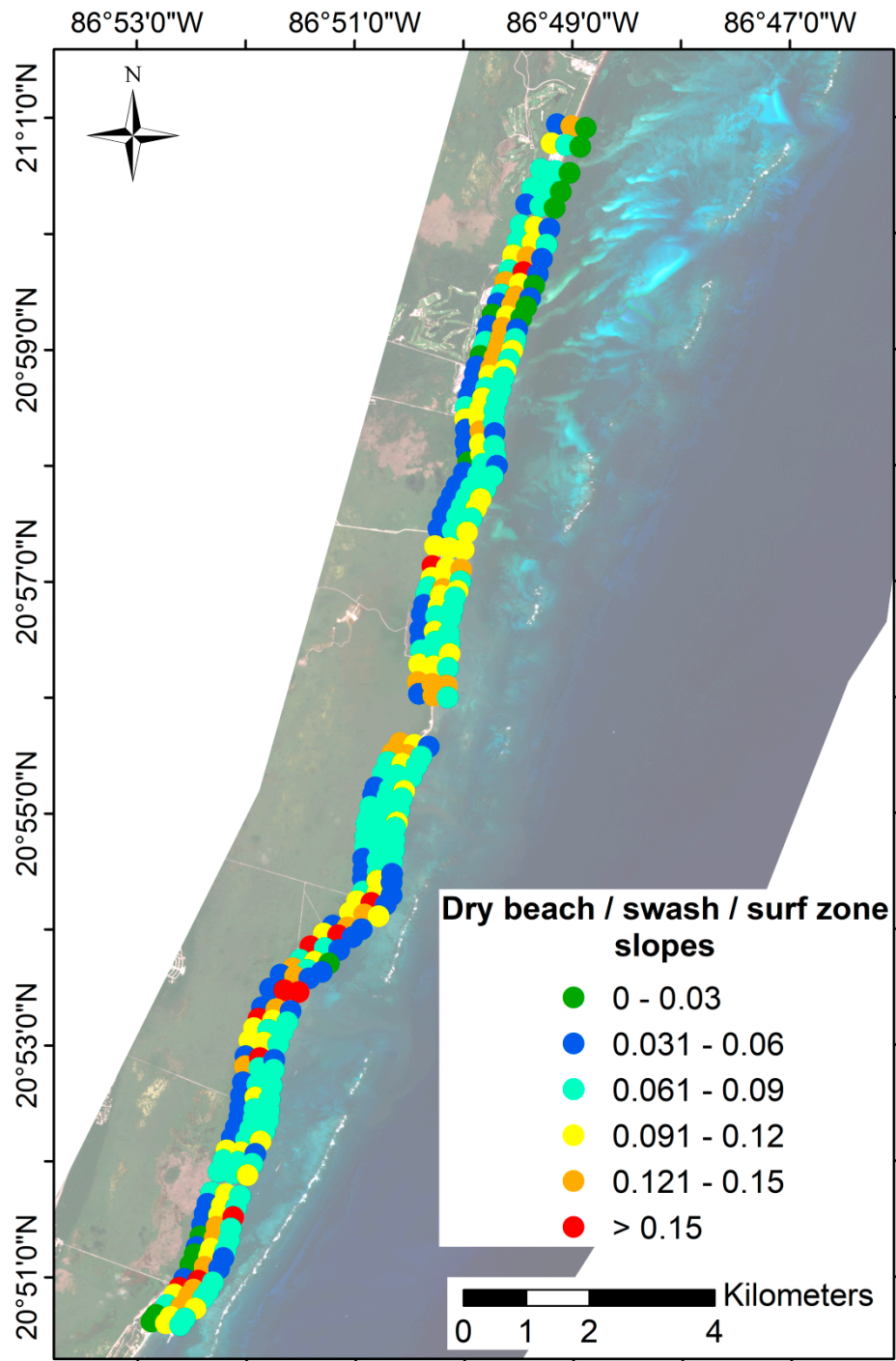


Figure S4. Spatial variation of slope of each beach profile zone obtained in PNAPM, winter 2022/2023: dry beach, swash zone and surf zone (Dry beach and surf zone data points are offset for better visualization).

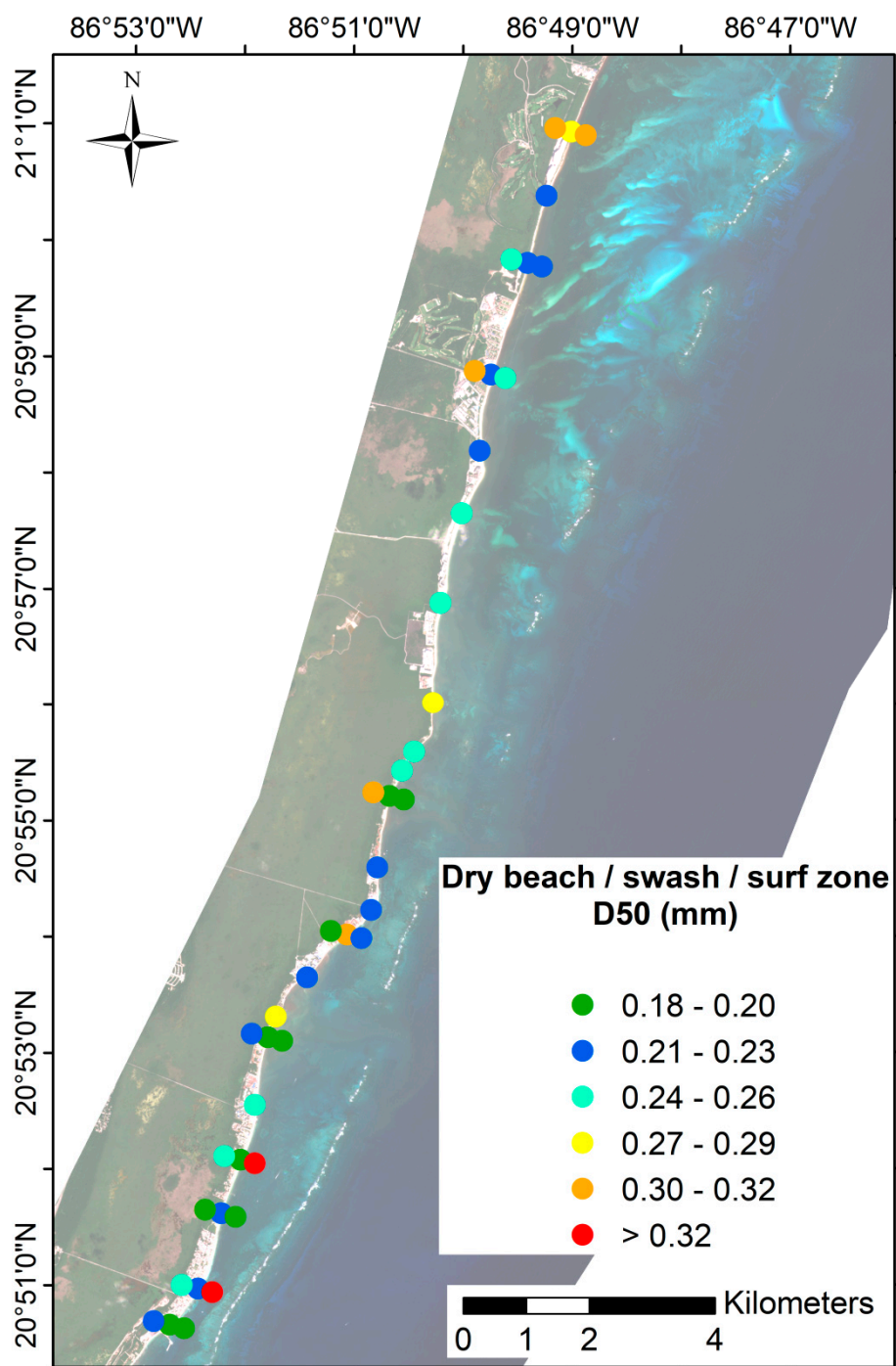


Figure S5. Grain size variation (D50) on PNAPM shore, winter 2022/2023, for dry beach, swash and surf zone. Locations with only 1 point refer to swash zone samples.

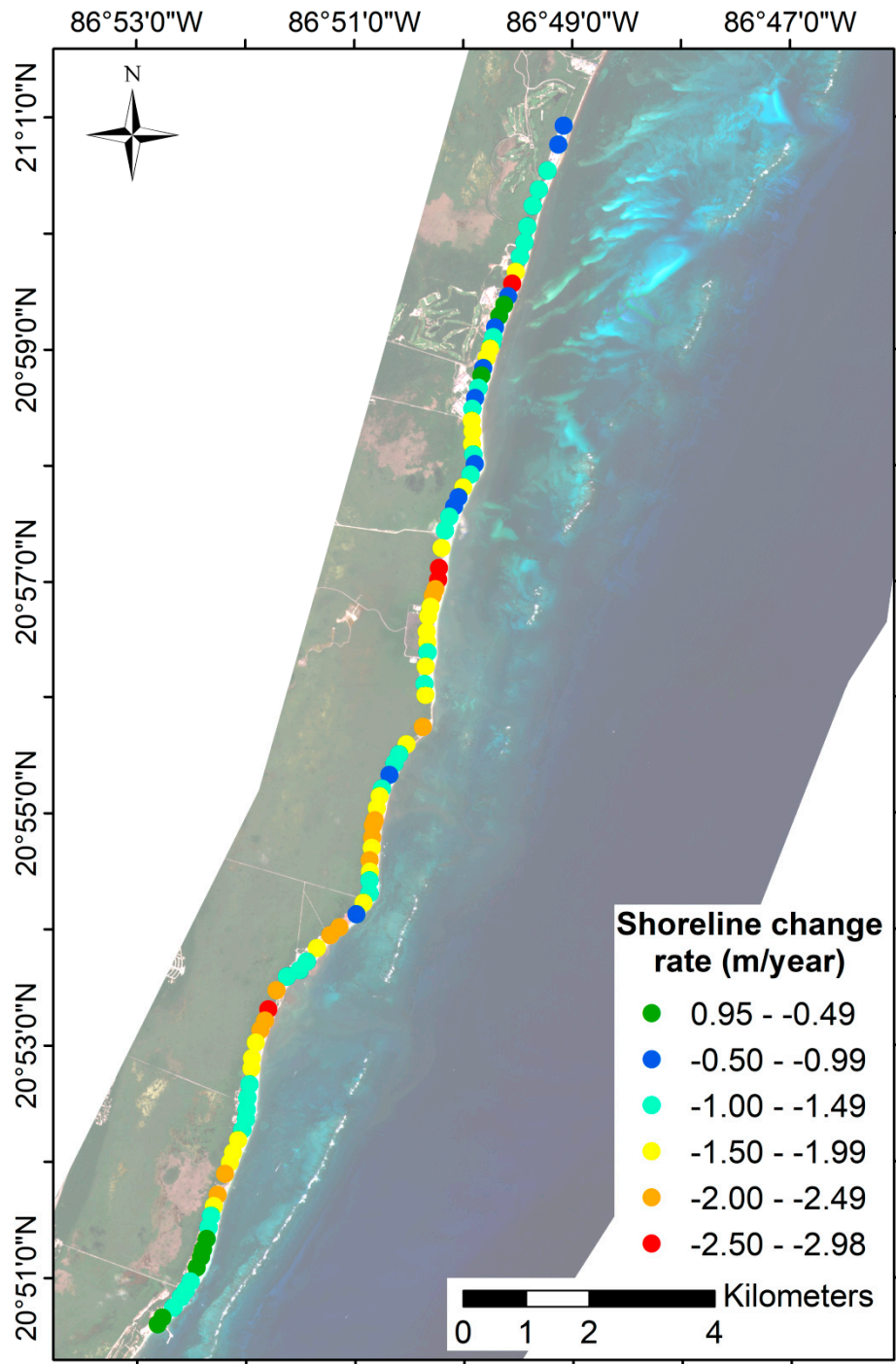


Figure S6. Shoreline change rate (m/year, between 2011-2022) for each location analyzed along the PNAPM shore.

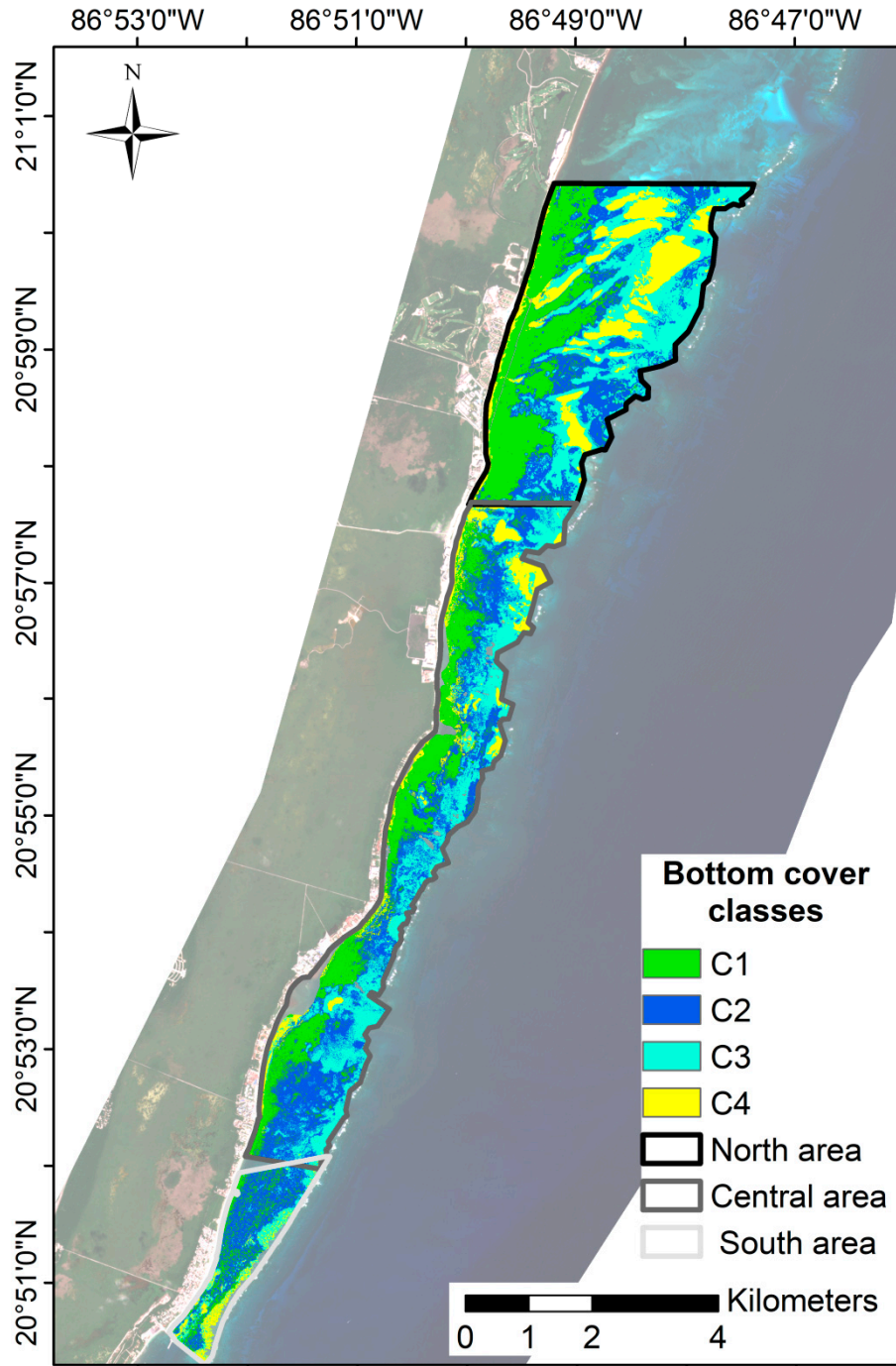


Figure S7. Map of bottom cover classes (vegetation/sediment) of the PNAPM reef lagoon, 2020/2021: C1 (dense vegetation), C2 (medium dense vegetation), C3 (Low dense vegetation), C4 (sediment). The bottom cover map of south area is an adaptation of [51].

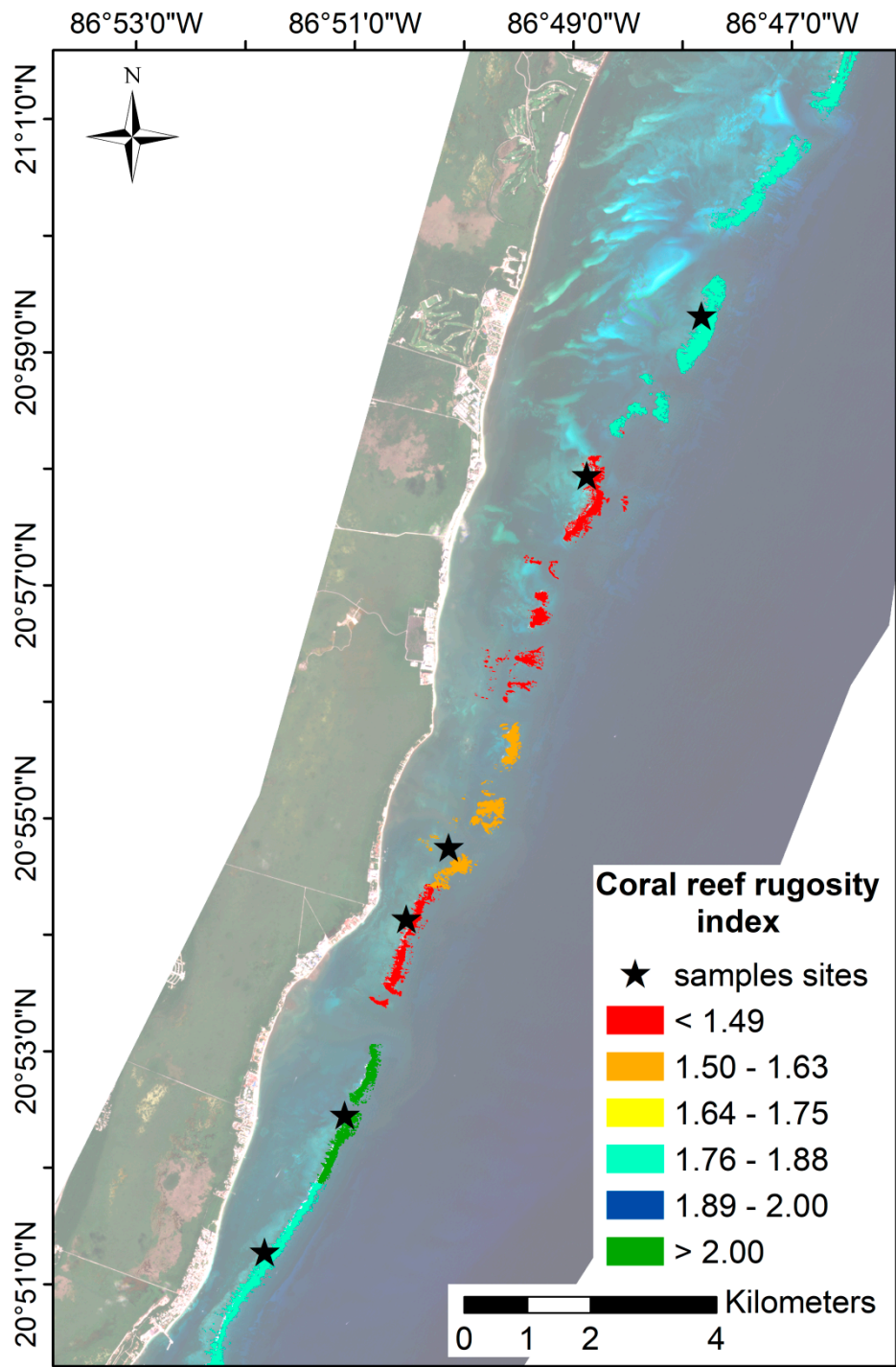


Figure S8. Map of coral reef rugosity index (sites data from [30] and backreef cover from [57]).

42
43
44
45
46