

Figure S1. Crop mapping results of SVM models trained on different sample repositories and satellite images in Henan.

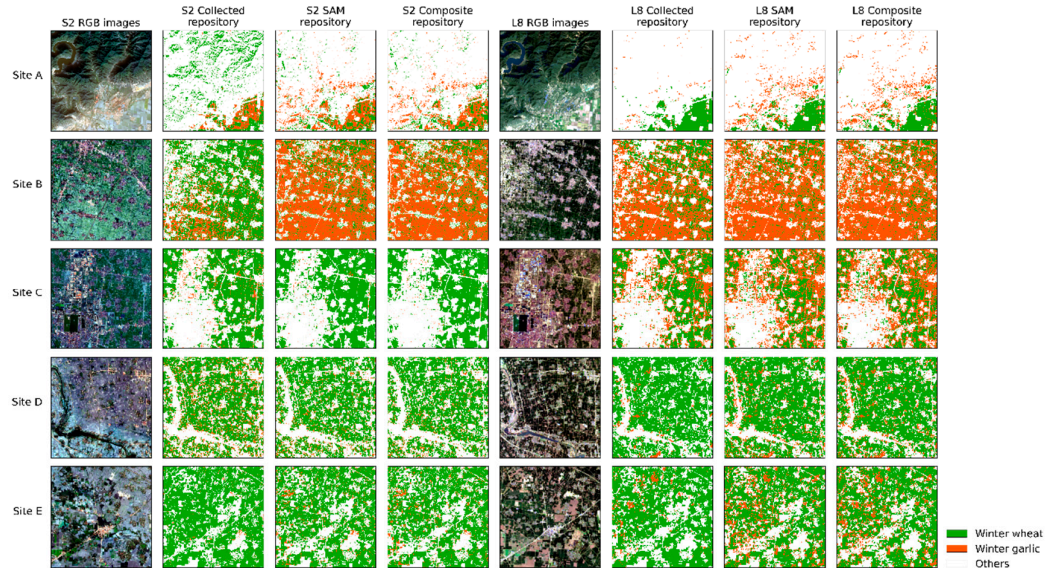


Figure S2. Crop mapping results of KNN models trained on different sample repositories and satellite images in Henan.



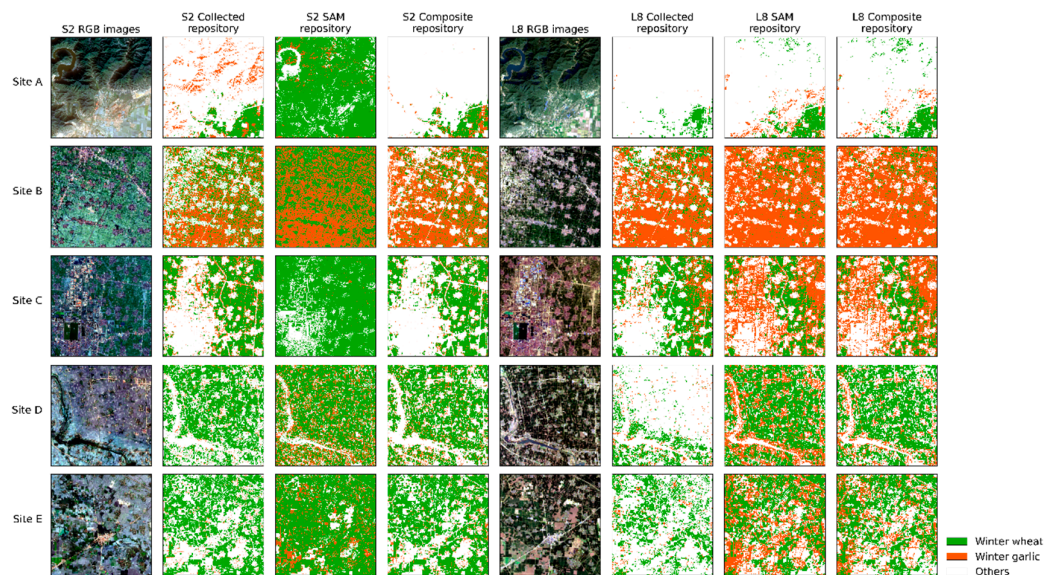


Figure S3. Crop mapping results of AtBiLSTM models trained on different sample repositories and satellite images in Henan.

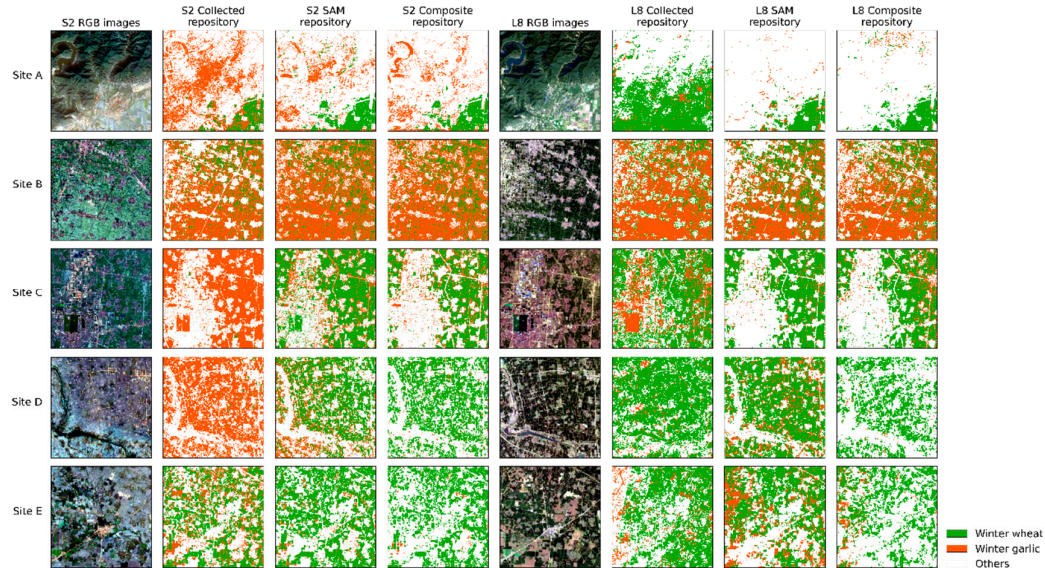


Figure S4. Crop mapping results of Conv1d-based models trained on different sample repositories and satellite images in Henan.

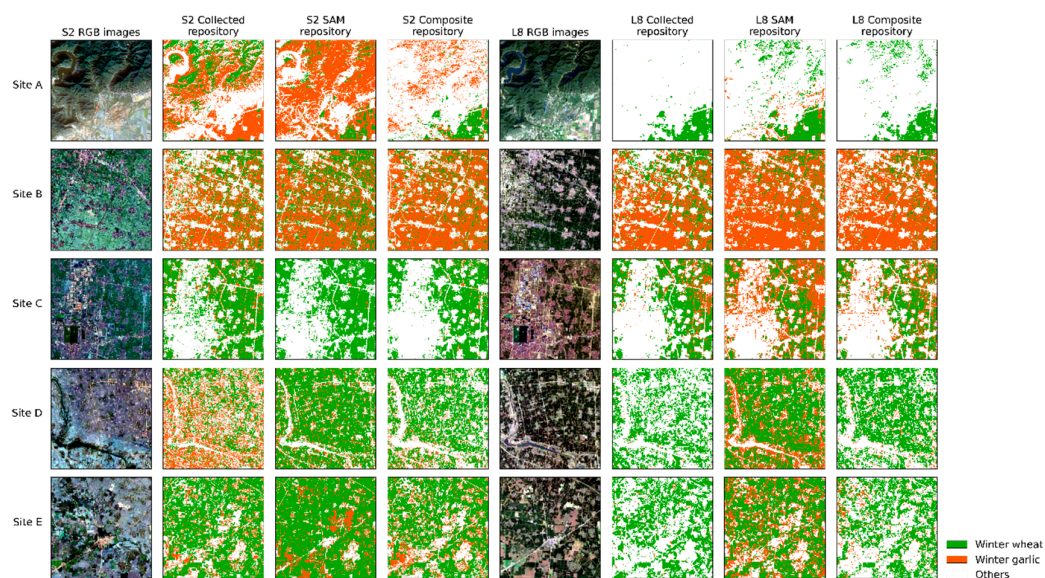


Figure S5. Crop mapping results of transformer models trained on different sample repositories and satellite images in Henan.



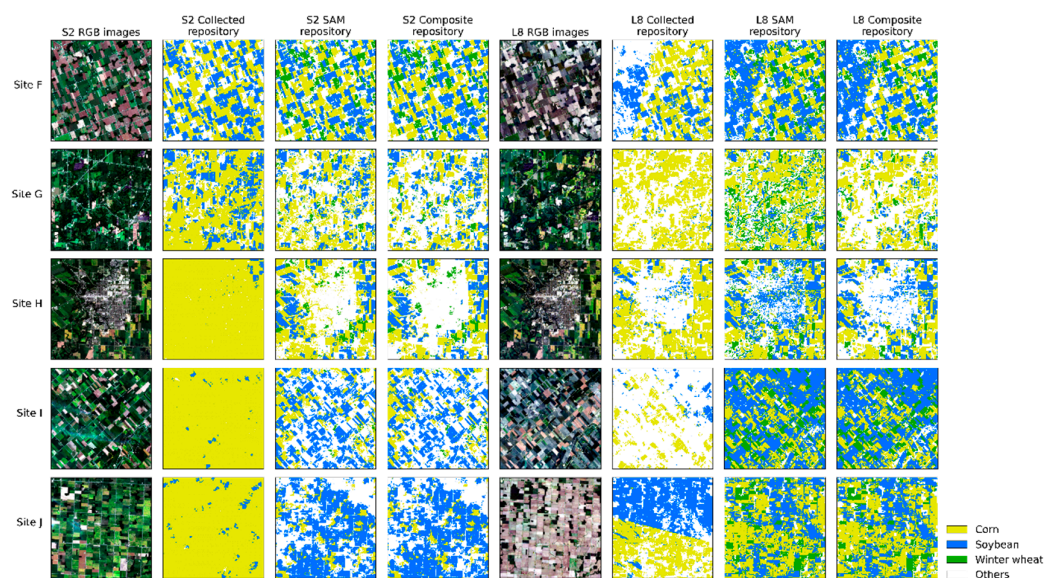


Figure S6. Crop mapping results of SVM models trained on different sample repositories and satellite images in Ontario.

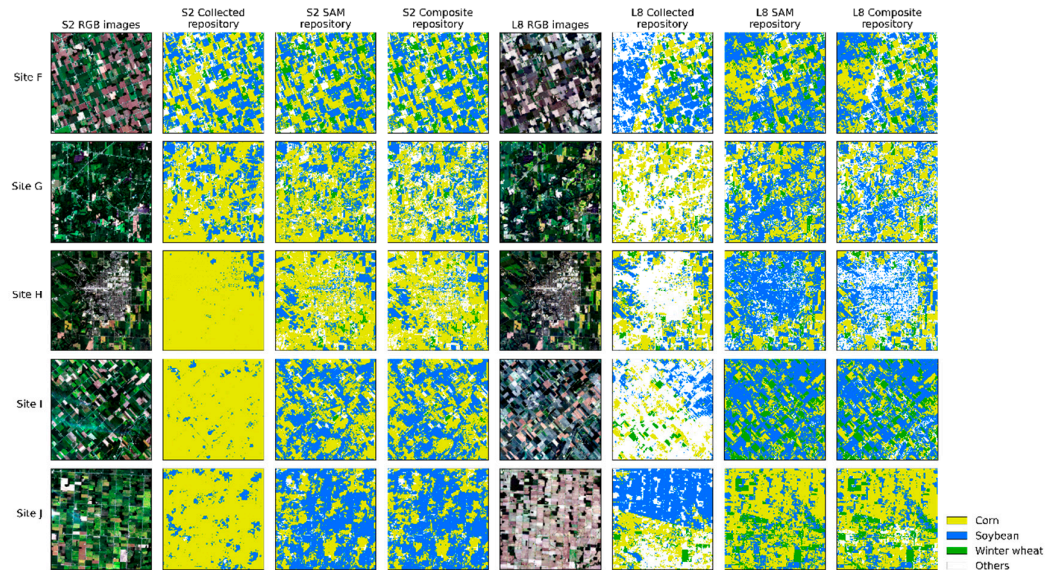


Figure S7. Crop mapping results of KNN models trained on different sample repositories and satellite images in Ontario.



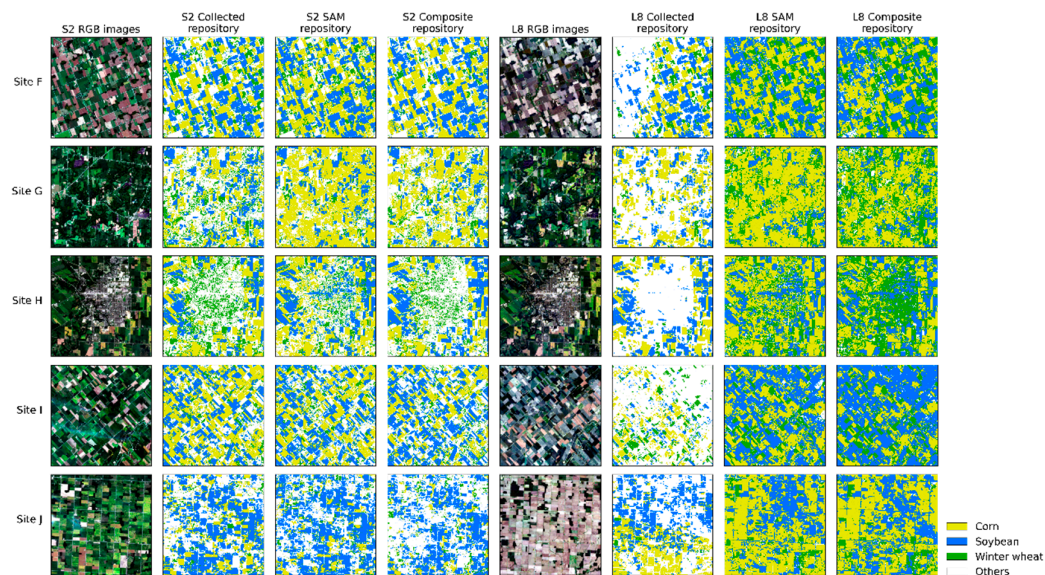


Figure S8. Crop mapping results of AtBiLSTM models trained on different sample repositories and satellite images in Ontario.

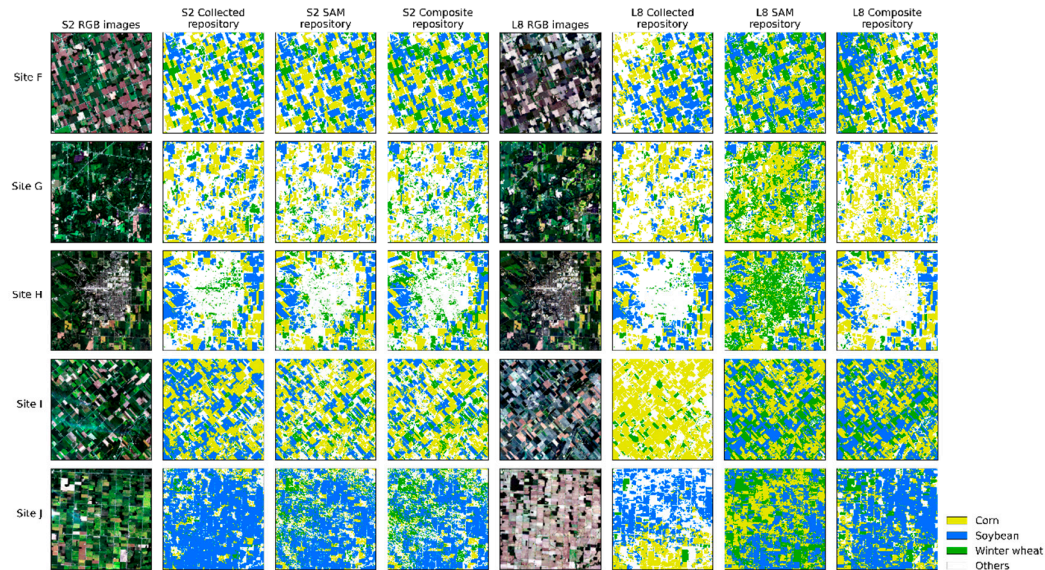


Figure S9. Crop mapping results of Conv1d-based models trained on different sample repositories and satellite images in Ontario.

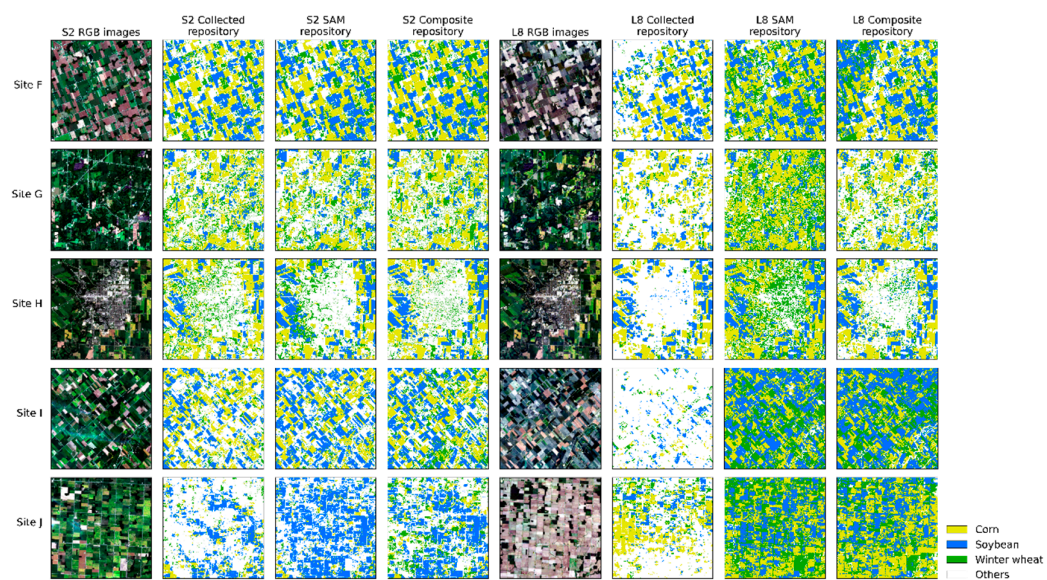


Figure S10. Crop mapping results of transformer models trained on different sample repositories and satellite images in Ontario.