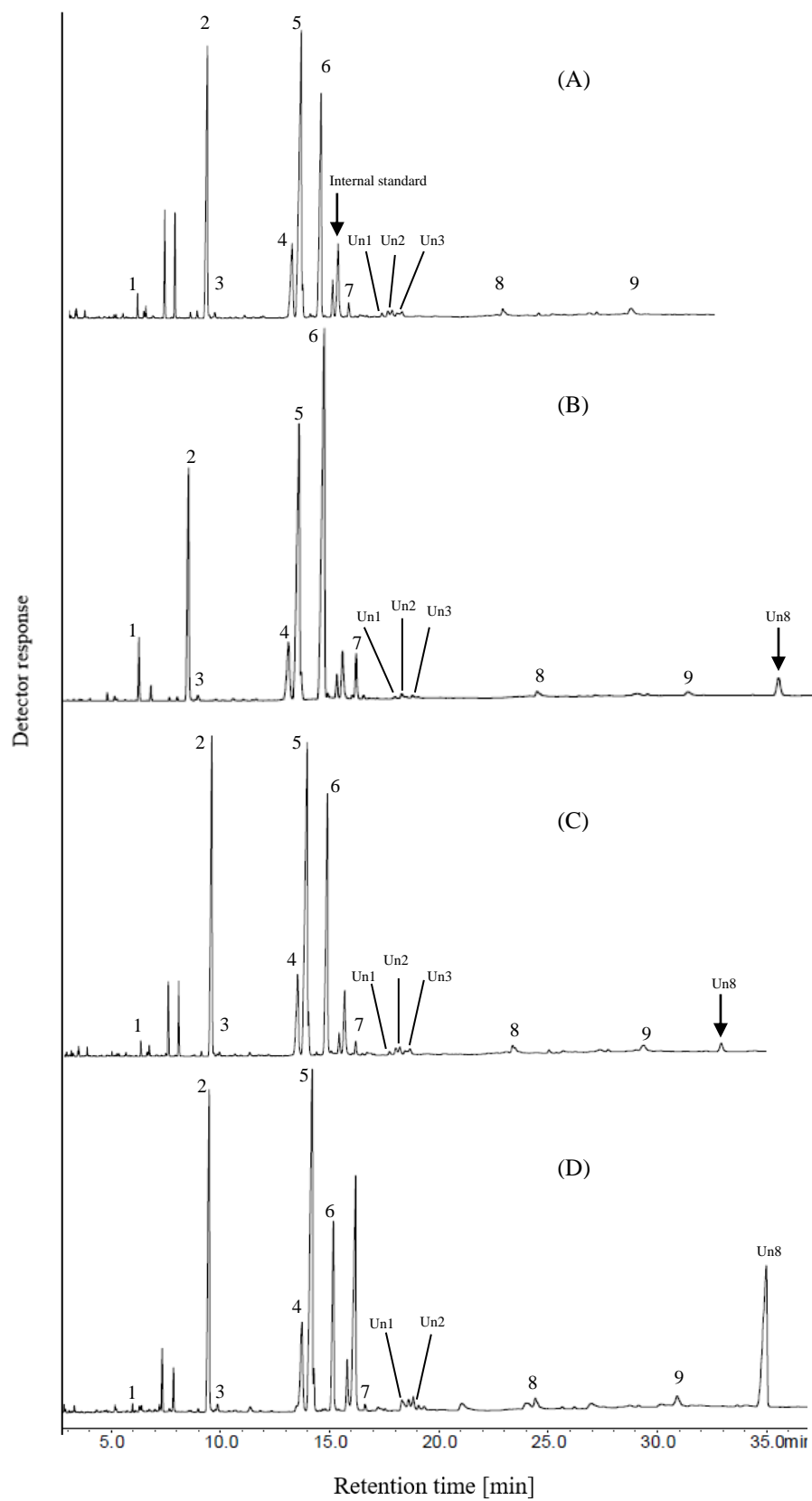
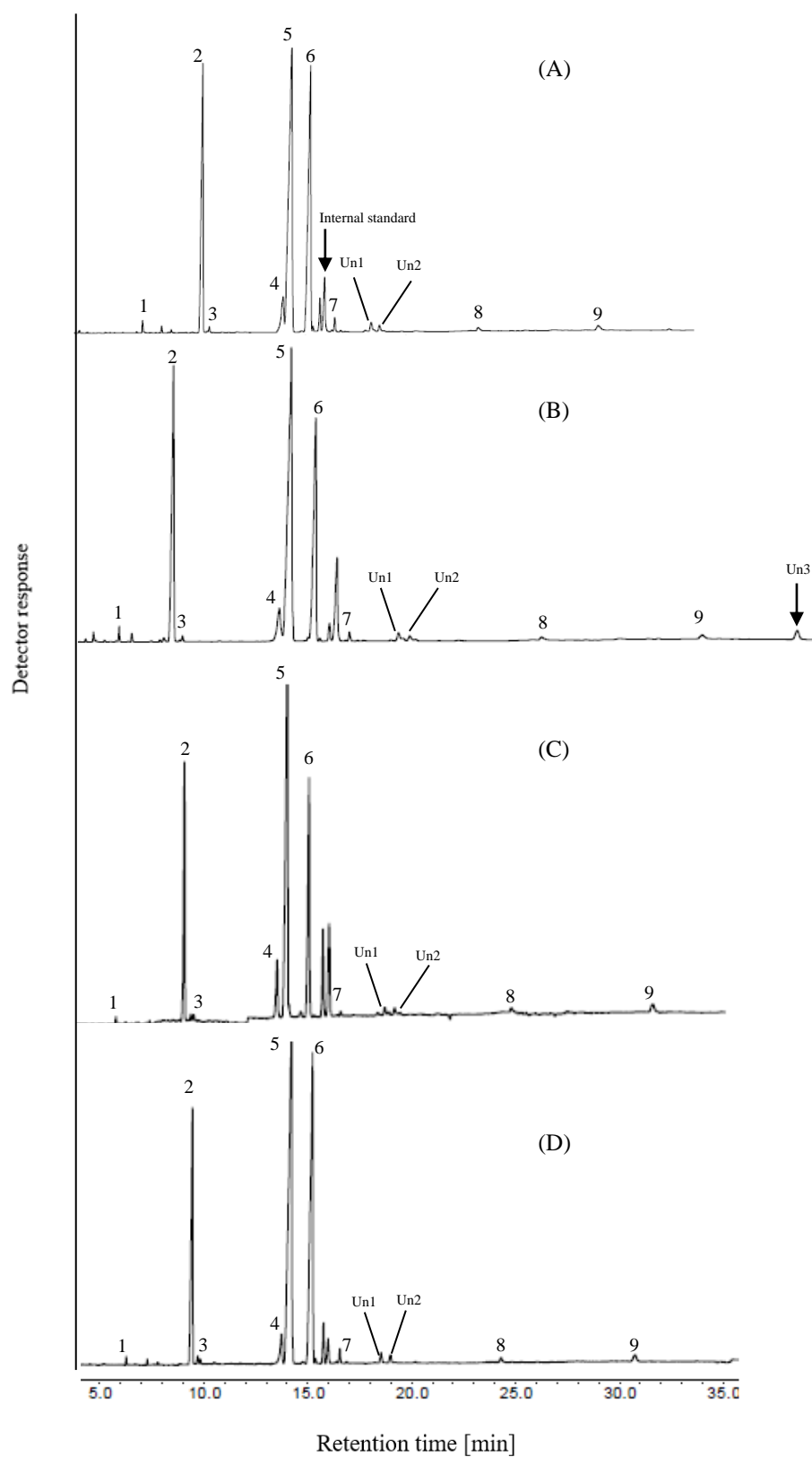


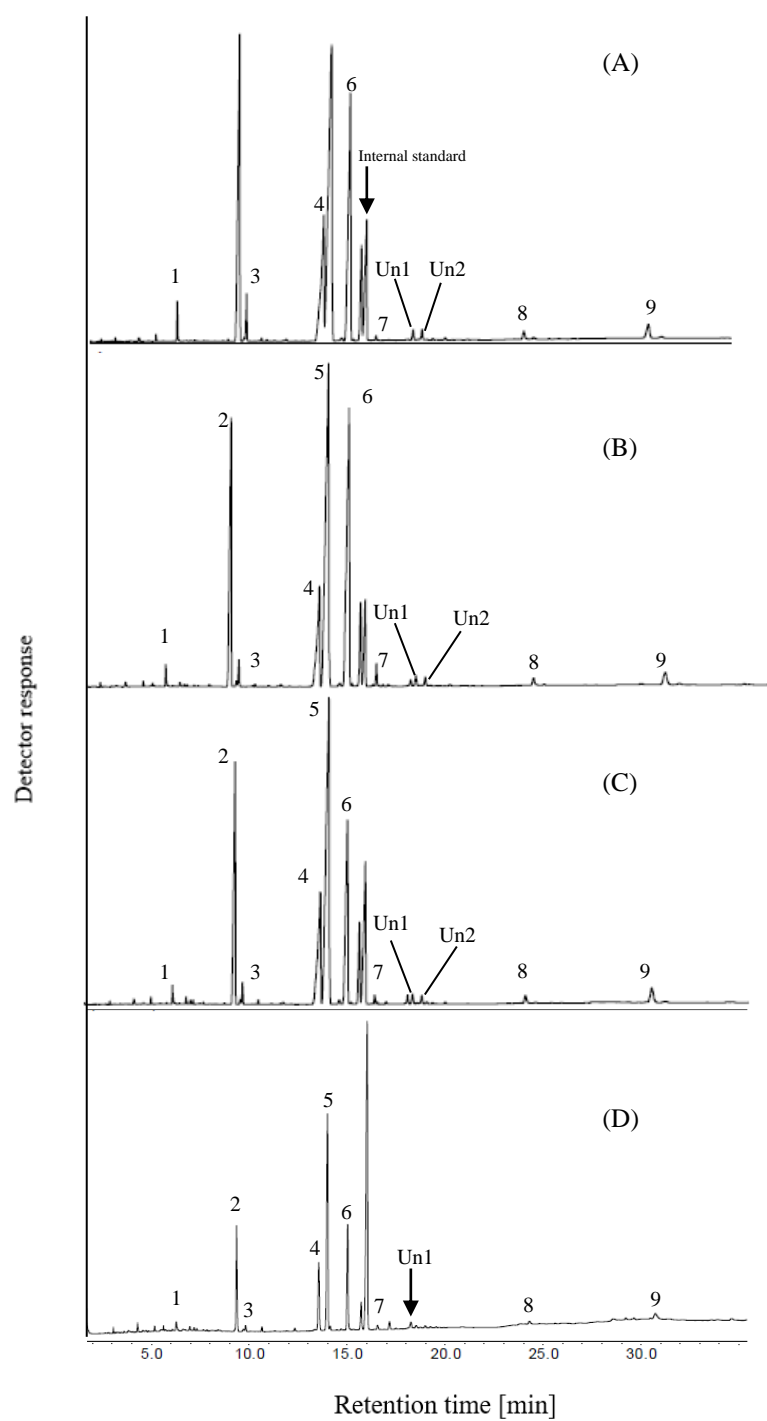
**Figure S1** GC chromatogram of fatty acids for perilla oil supplemented media. Peak: (1)C14:0; (2) C16:0; (3)C16:1; (4)C18:0; (5)C18:1; (6)C18:2; (7)C18:3; (8)C20:4; (9)C20:5; (10)C22:6; (Un1)Unknown 1; (Un2)Unknown 2; (Un3)Unknown 3; (Un4)Unknown 4; (Un5)Unknown 5; (Un6)Unknown 6; (Un7)Unknown 7; (Un8)Unknown 8; (A)2day; (B): 4day; (C):6 day; (D) 8 day.



**Figure S2** GC chromatogram of fatty acids for soybean oil supplemented media. Peak: (1)C14:0; (2) C16:0; (3)C16:1; (4)C18:0; (5)C18:1; (6)C18:2; (7)C18:3; (8)C20:5; (9)C22:6; (Un1)Unknown 1; (Un2)Unknown 2; (Un3)Unknown 3; (Un4)Unknown 4; (Un5)Unknown 5; (Un6)Unknown 6; (Un7)Unknown 7; (Un8)Unknown 8; (A)2day; (B)4day; (C)6 day; (D)8 day.



**Figure S3** GC chromatogram of fatty acids for rice bran oil supplemented media. Peak: (1)C14:0; (2) C16:0; (3)C16:1; (4)C18:0; (5)C18:1; (6)C18:2; (7)C18:3; (8)C20:5; (9)C22:6; (Un1)Unknown 1; (Un2)Unknown 2; (Un3)Unknown 3; (A)2day; (B)4 day; (C)6 day; (D)8 day.



**Figure S4** Chromatograms of fatty acids for unsupplement media. Peak: (1)C14:0; (2) C16:0; (3)C16:1; (4)C18:0; (5)C18:1; (6)C18:2; (7)C18:3; (8)C20:5; (9)C22:6; (Un1) Unknown 1; (Un2)Unknown 2; (A)2day; (B): 4day; (C)6 day; (D)8 day.