

Iron Oxide-Activated Carbon Composites for Enhanced Microwave-Assisted Pyrolysis of Hardwood

Amine Lataf ¹, Andrew E. Khalil Awad ¹, Bjorn Joos ^{2,3}, Robert Carleer ¹, Jan Yperman ¹, Sonja Schreurs ⁴, Jan D'Haen ², Ann Cuypers ⁵ and Dries Vandamme ^{1,*}

¹ Analytical and Circular Chemistry, IMO, CMK, Hasselt University, Agoralaan Building D, 3590 Diepenbeek, Belgium; amine.lataf@uhasselt.be (A.L.); andrew.khalilawad@student.uhasselt.be (A.E.K.A.); robert.carleer@uhasselt.be (R.C.); jan.yperman@uhasselt.be (J.Y.)

² Institute for Materials Research and Imec division Imomec (IMO-IMOMEC), Hasselt University, 3590 Diepenbeek, Belgium; bjorn.joos@uhasselt.be (B.J.); jan.dhaen@uhasselt.be (J.D.)

³ EnergyVille, Thor Park 8320, 3600 Genk, Belgium

⁴ NuTec, CMK, Hasselt University, Agoralaan Building H, 3590 Diepenbeek, Belgium; sonja.schreurs@uhasselt.be

⁵ Environmental Biology, CMK, Hasselt University Agoralaan Building D, 3590 Diepenbeek, Belgium; ann.cuypers@uhasselt.be

*Correspondence: dries.vandamme@uhasselt.be

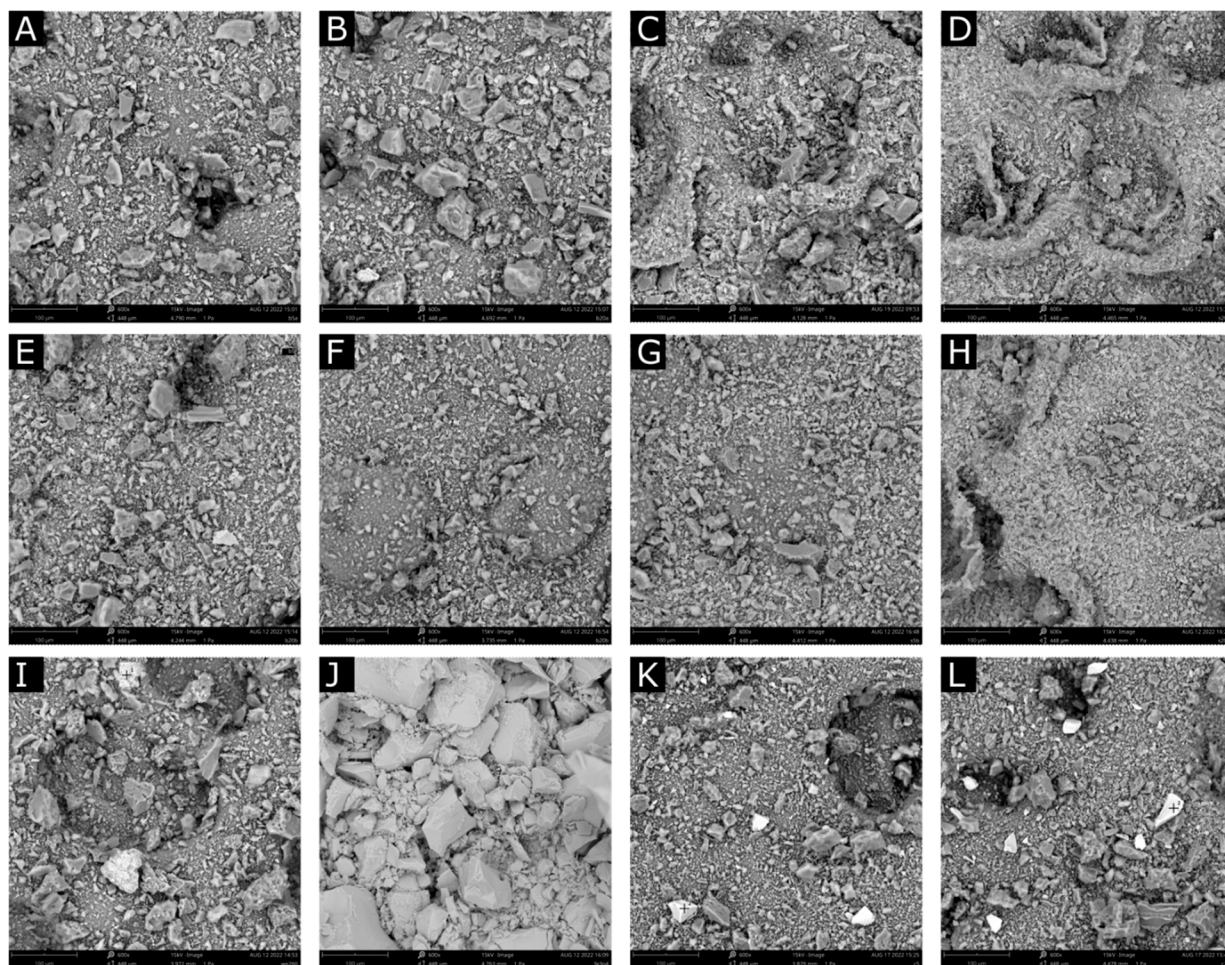


Figure S1 - The SEM pictures of the different used MWAs. A: A0-5; B: A0-20; C: A5; D: A20; E: B0-5; F: B0-20; G: B5; H: B20; I: C0; J: 100% Fe₃O₄; K: C5; L: C20 (Phenom Pro X, Thermo Scientific).

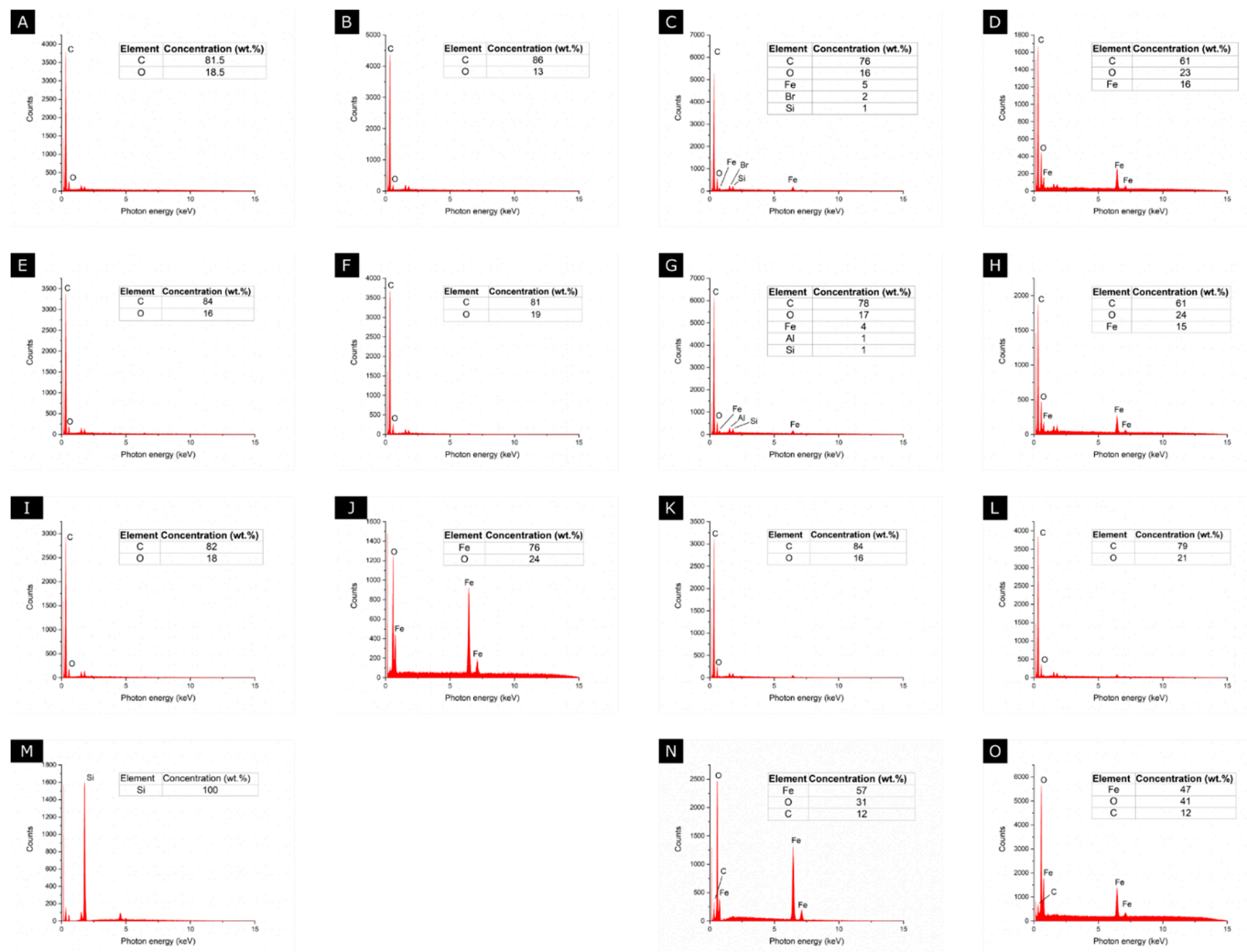


Figure S2- The EDX analysis of the different used MWAs. A: A0-5; B: A0-20; C: A5; D: A20; E: B0-5; F: B0-20; G: B5; H: B20; I: C0; J: 100% Fe₃O₄; K: C5; L: C20; M: C0 spot analysis; N: C5 spot analysis; O: C20 spot analysis (Phenom Pro X, Thermo Scientific).

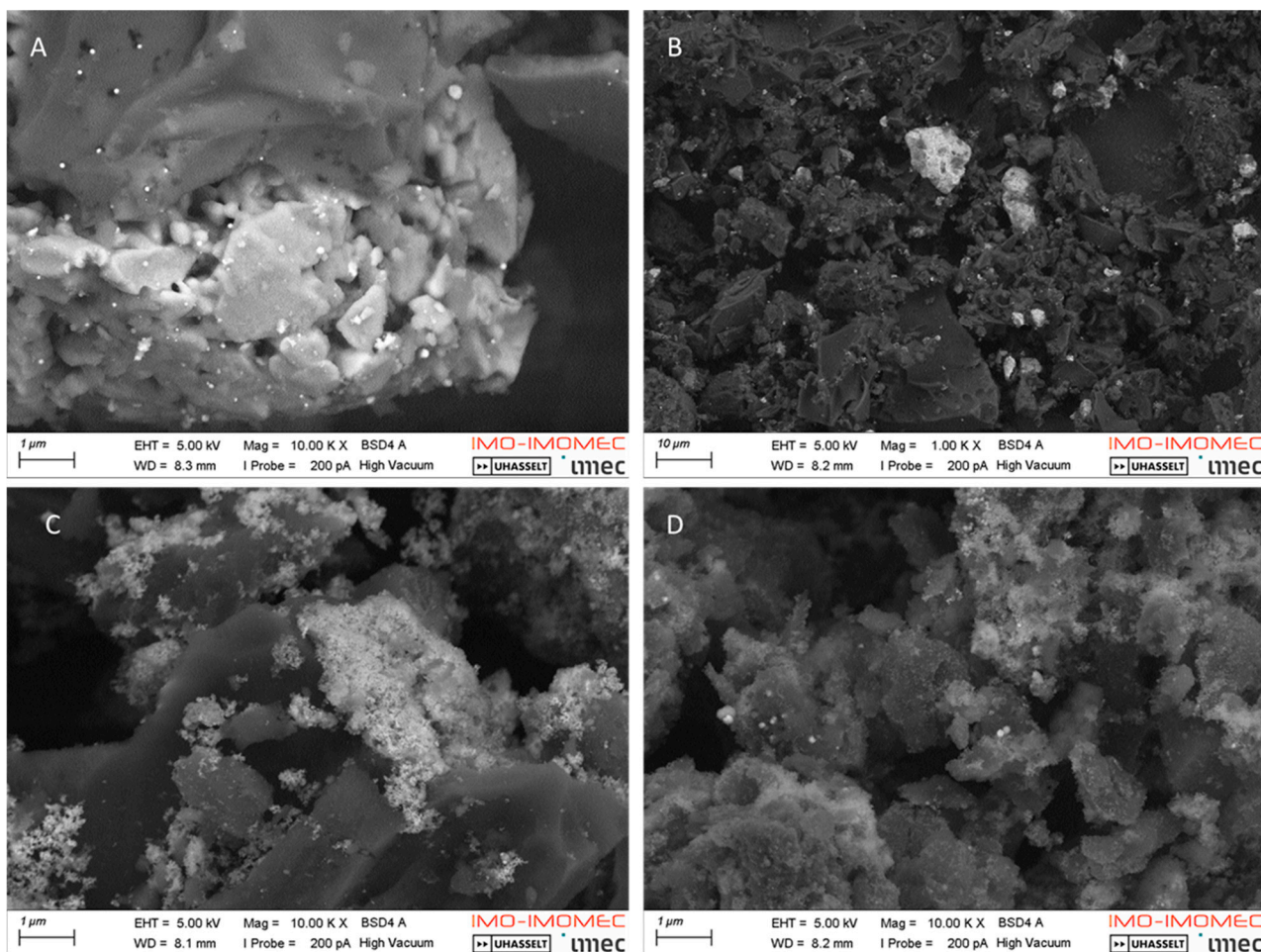


Figure S3 - The SEM pictures of the different used MWAs. A: C0 (10 000 \times); B: C5 (1000 \times); C: A5 (10 000 \times); D: A20 (10 000 \times) (Zeiss 450 FEGSEM with Gemini 2 optics).