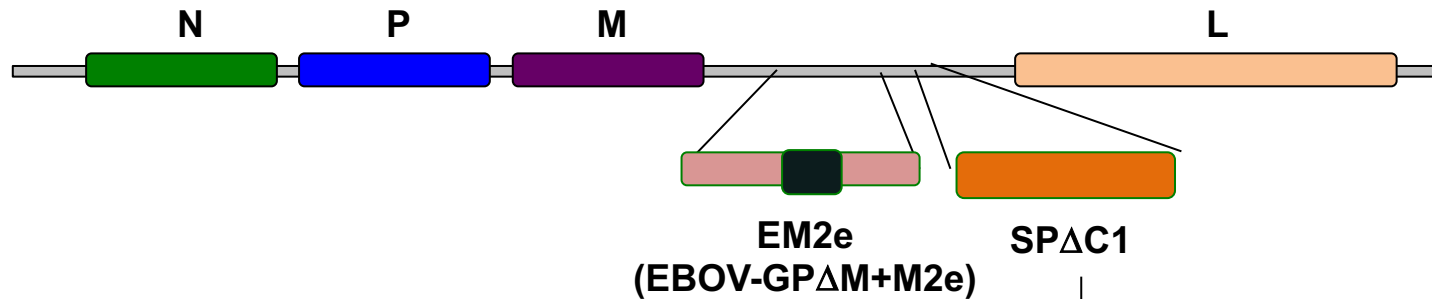
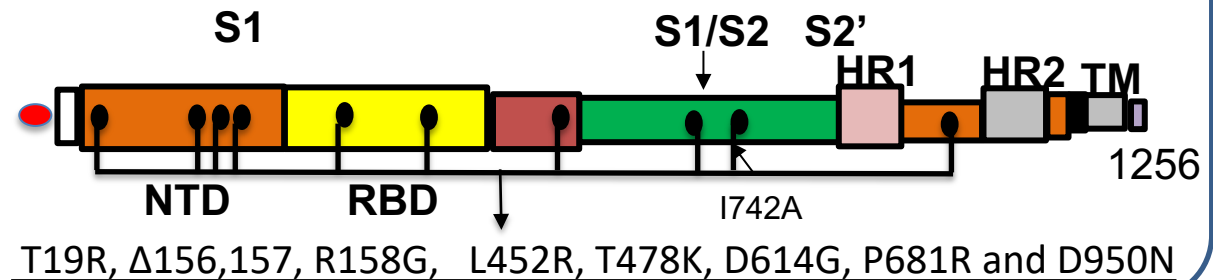


Supplemental Figure S1. The diagram of the vaccine candidate rVSV-EM2-SP<sub>Delta</sub> structure (derived from Ao et al. J. Virol. 2022)

**rVSV-E $\Delta$ tM2e/Delta-SP $\Delta$ C<sub>A742</sub> (VSV-EM2e/SP $\Delta$ C1)**



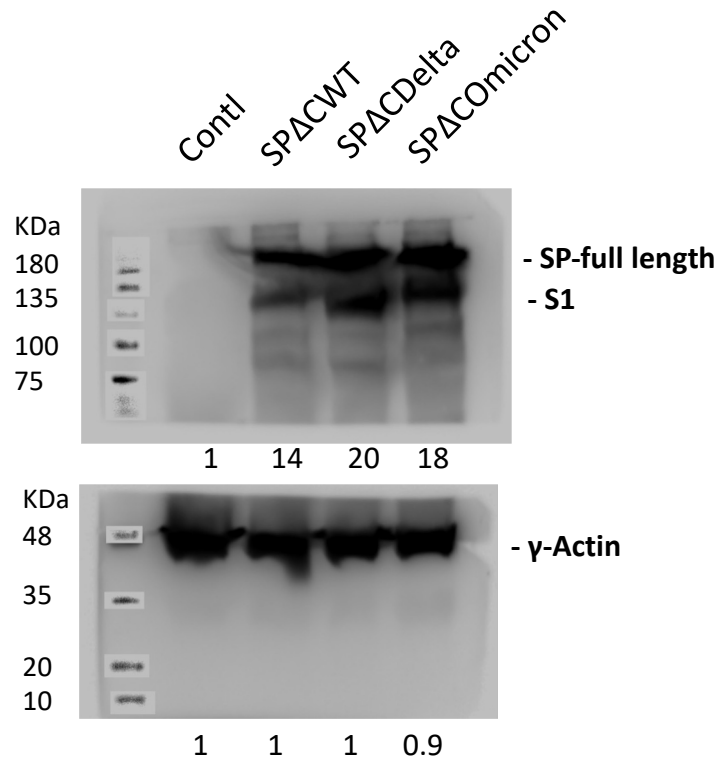
**SARS-CoV-2 Delta-SP $\Delta$ C<sub>A742</sub> (SP $\Delta$ C1)**



Supplemental Figure S2. Expression of SP $\Delta$ CWT, SP $\Delta$ C $\Delta$ Delta, and Hu-IAV-M2 in 293T cells.

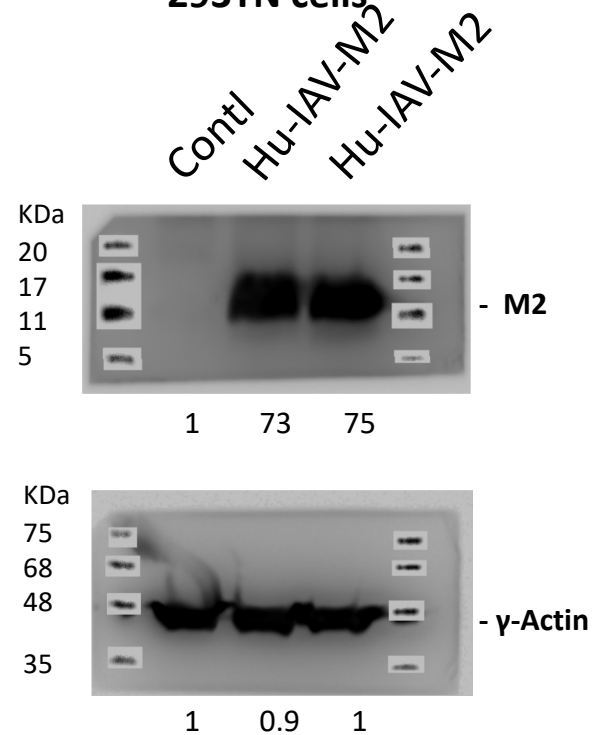
**A.**

**293TN cells**



**B.**

**293TN cells**



Suppl Figure S2: The 293TN cells were transfected with plasmids pCAGGS-SARS-CoV-2 SP $\Delta$ C (deleted C-terminal 17 aa) from the original strain Wu-Han-1 (SP $\Delta$ C<sub>WT</sub>), SP $\Delta$ C<sub>Delta</sub>, or SP $\Delta$ C<sub>Omicron</sub> (A), or plasmids pCAGGS-Hu-IAV-M2 (B). After 48 hrs of transfection, the transfected 293T cells were lysed in RIPA buffer, and directly loaded into the 12 % SDS-PAGE gel and the presence of each of viral proteins was detected by WB with various corresponding antibodies and the detected proteins were indicated in the right side of the each gel.