

Figure S1. Images of experimental tiles of each treatment during the study periods.

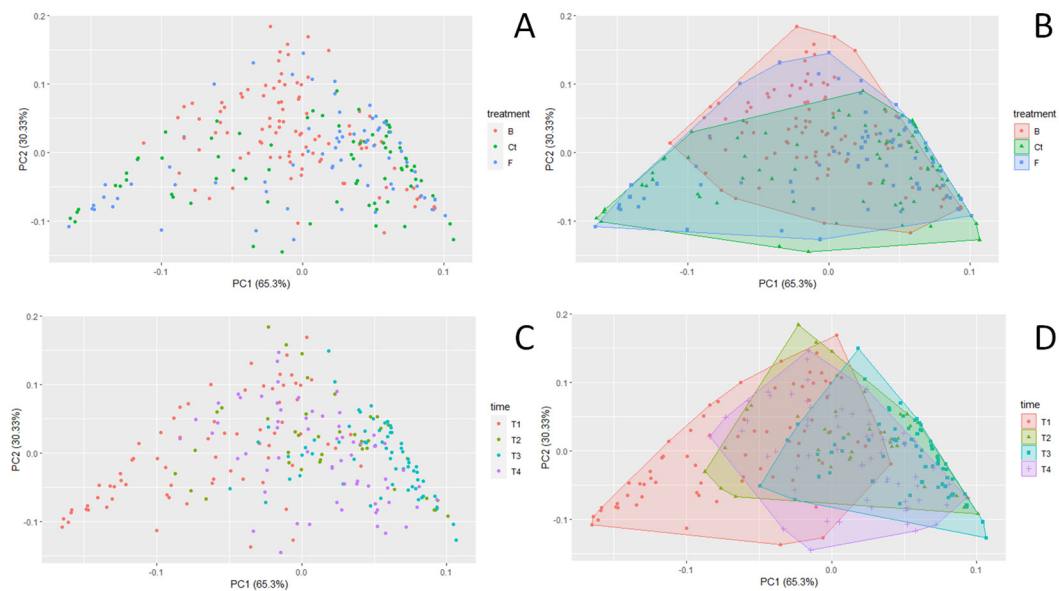


Figure S2. PCA showing the heterogeneous dispersion of data of benthic invertebrate groups by treatments showed in points (A) and overlapped colored frames (B); and by monitoring times in points (C) and colored frames (D).

Table S1. Glm modelling on diversity of benthic groups (model <- glm(Shannon ~ Treatment + Time, data=diversity_cover). Signif. codes: 0 '***' 0.001 '**' 0.01 '*' 0.05 '.' 0.1 ' ' 1.

Coefficients	Estimate	Std. Error	t value	Pr(> t)	
(Intercept) B	1.19379	0.06064	19.687	6.24E-06	***
Treatment Ct	0.07135	0.06687	-1.067	0.3348	
Treatment F	0.07566	0.05981	-1.265	0.2616	
Time T2	-0.19273	0.07975	-2.417	0.0604	.
Time T3	-0.22326	0.06907	-3.233	0.0231	*
Time T4	0.00744	0.06907	0.108	0.9184	