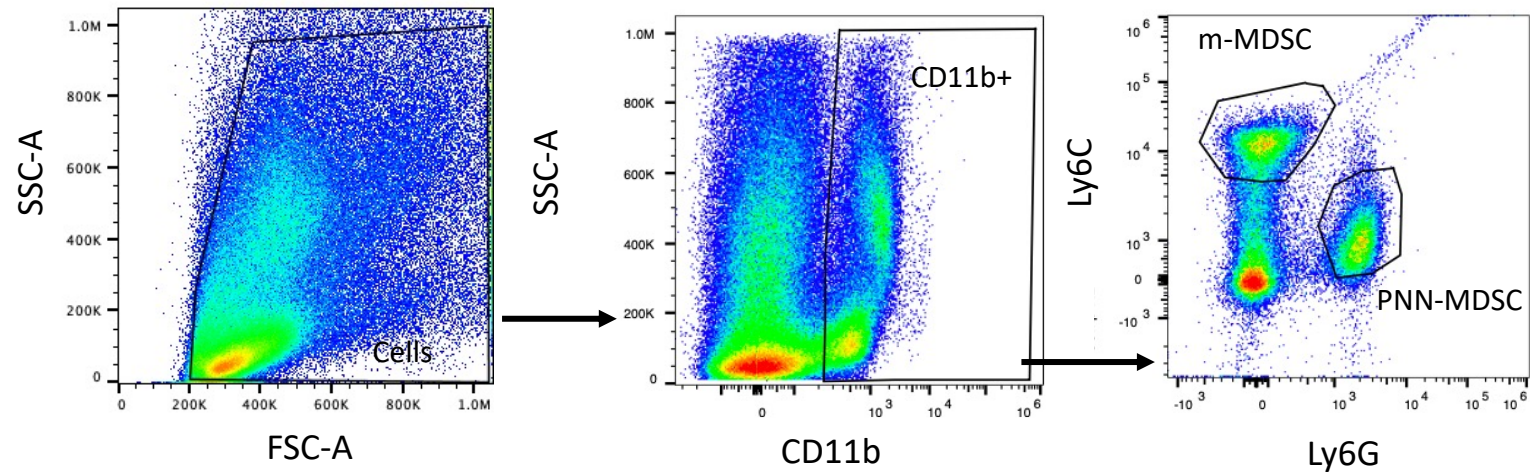
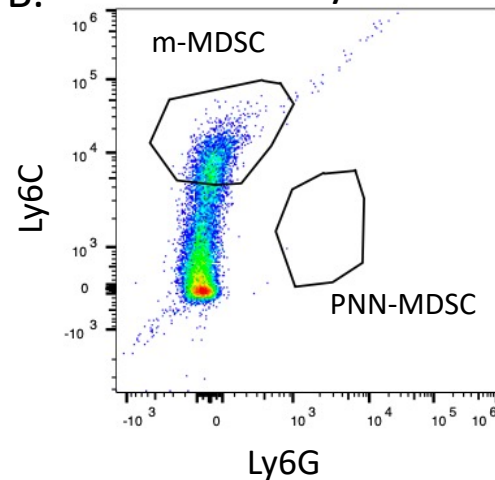


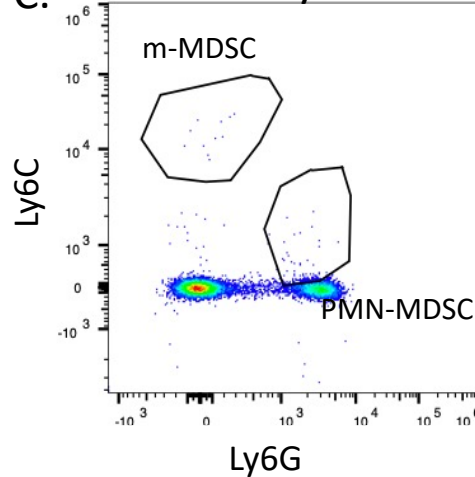
A.



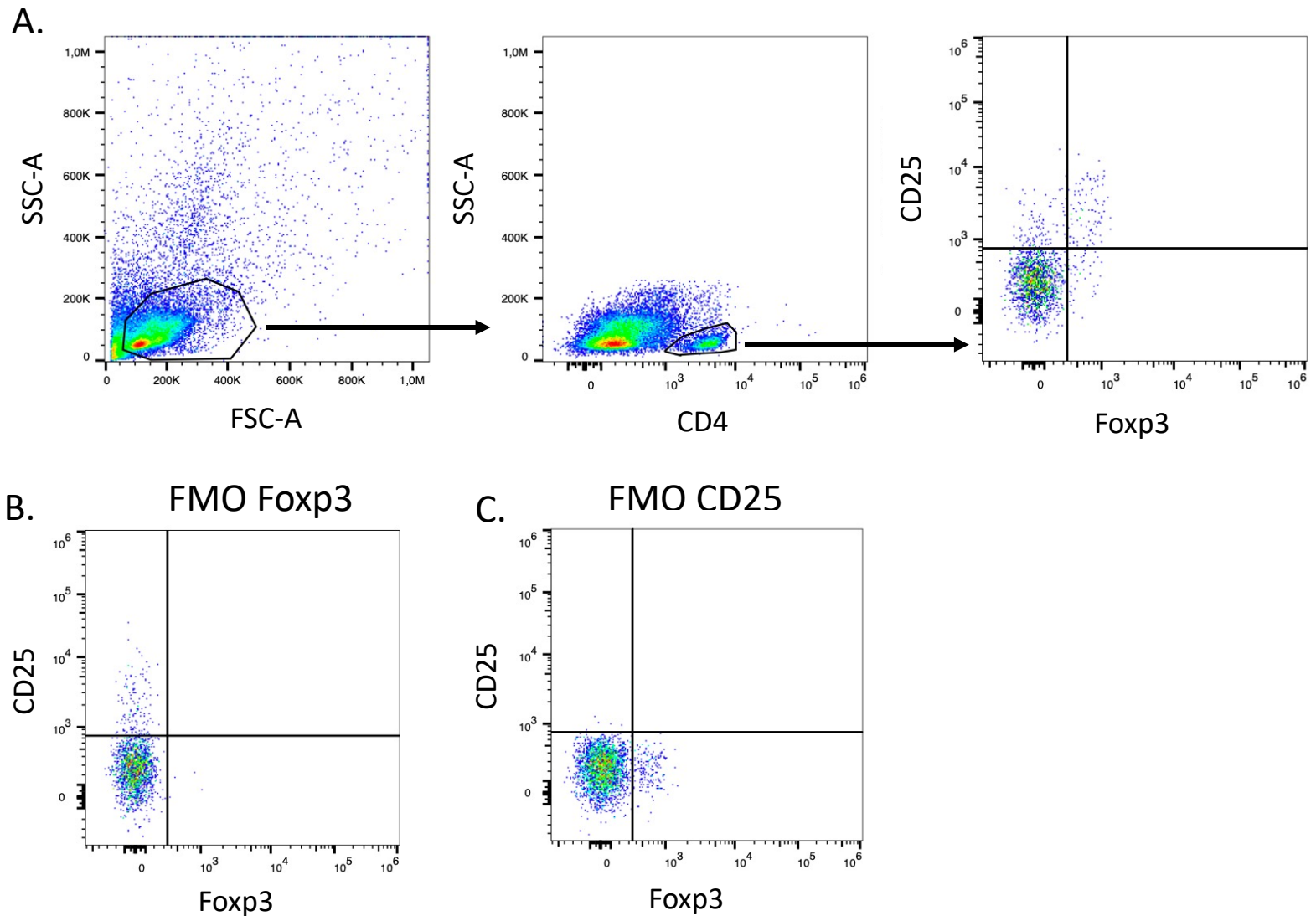
B. FMO Ly6G



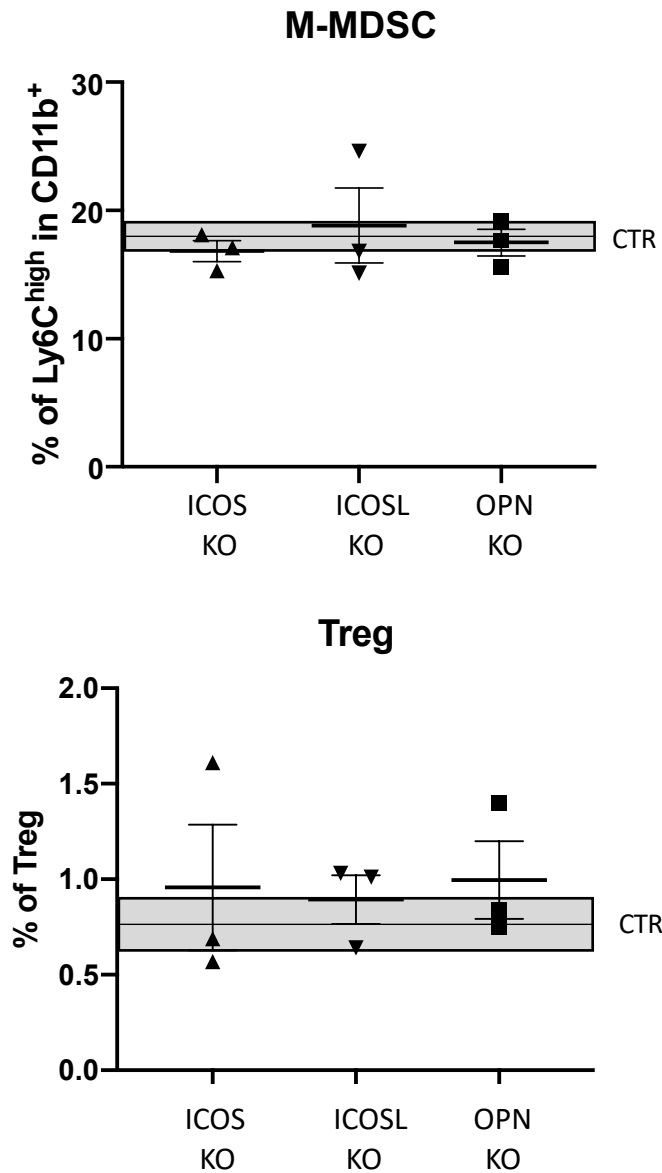
C. FMO Ly6C



Supplementary Figure S1. Gating strategies defining M-MDSC in lungs. After the identification of the cells using the morphological parameters (FSC-A vs SSC-A), MDSC were identified as CD11b⁺ cells and M-MDSC were defined as Ly6C-positive and Ly6G-negative cells. B) Fluorescence minus one (FMO) of Ly6G and C) FMO of Ly6C.



Supplementary Figure S2. A) Gating strategies defining regulatory T cells (Treg) in lungs. Cells were gated on CD4⁺ T cells after morphological discrimination (FSC-A vs. SSC-A), and Tregs are shown as CD25⁺Foxp3⁺ cells, B) fluorescence minus one (FMO) of Foxp3 and C) FMO of CD25 markers.



Supplementary Figure S3. Percentages of m-MDSC and Tregs in lungs of tumor free bearing mice.