

Supplementary information for

Inhibition of amyloid- β (A β)-induced cognitive impairment and neuroinflammation in CHI3L1 knockout mice through downregulation of ERK-PTX3 pathway

Hyeon Joo Ham¹, Yong Sun Lee¹, Ja Keun Koo¹, Jaesuk Yun¹, Dong Ju Son¹, Sang-Bae Han¹,
and Jin Tae Hong¹

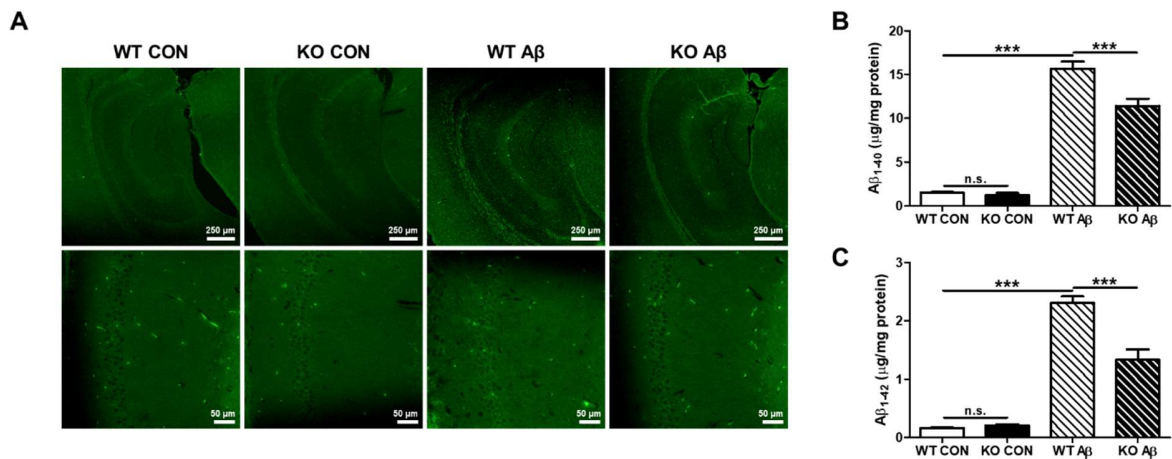
¹College of Pharmacy and Medical Research Center, Chungbuk National University, Osongsaengmyeong 1-ro, Osong-eup, Heungdeok-gu, Cheongju, Chungbuk, 28160, Republic of Korea

*Correspondence: Dr. Jin Tae Hong (jinthong@chungbuk.ac.kr), College of Pharmacy and Medical Research Center, Chungbuk National University, Osongsaengmyeong 1-ro, Osong-eup, Heungdeok-gu, Cheongju, Chungbuk, 28160, Republic of Korea, Tel: +82-043-261-2813, Fax: +82-043-268-2732.

Supplementary Table S1. List and sequences of qPCR primers for mRNA expression

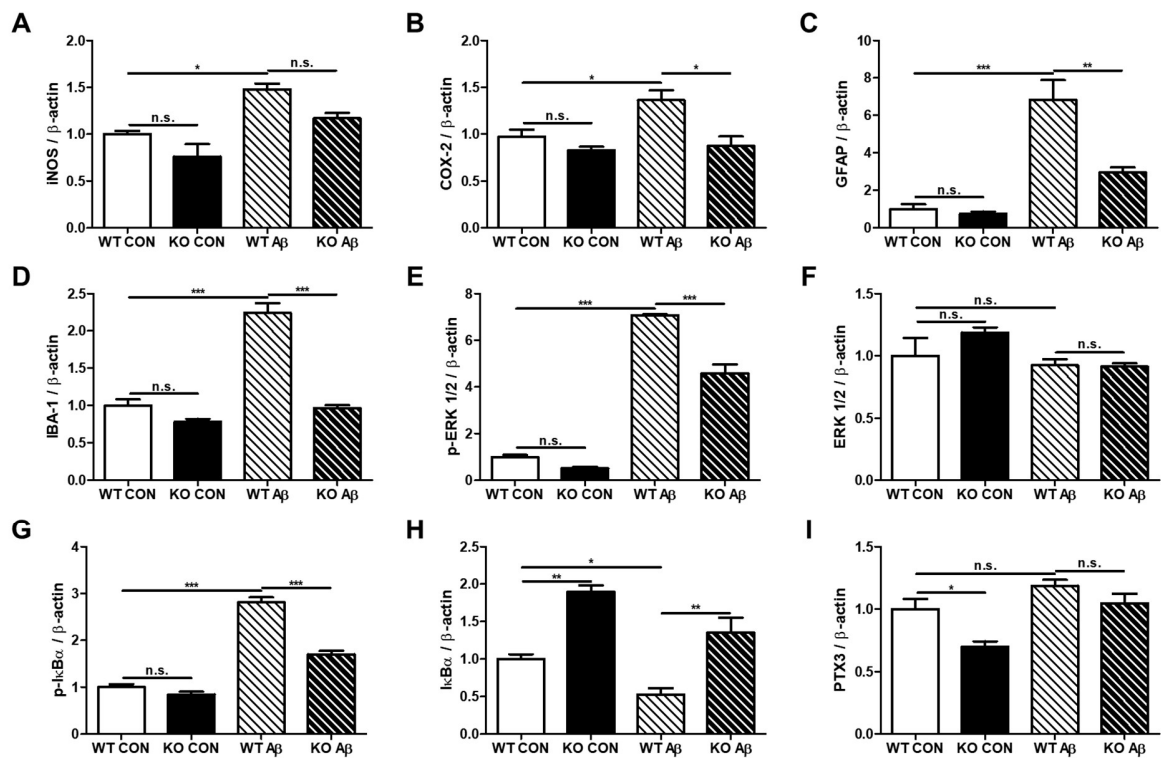
	Forward (5'→3')	Reverse (5'→3')	Species
<i>β-actin</i>	GGCTGTATTCCCCTCCATCG	CCAGTTGGTAACAATGCCATGT	Mouse
<i>Tnf</i>	TCTTCTCATTCCTGCTTGTGG	CACTTGGTGGTTTGCTACGA	Mouse
<i>Il1b</i>	CCTTCCAGGATGAGGACATGA	TGAGTCACAGAGGATGGGCTC	Mouse
<i>Il6</i>	GAGGATACCACTCCCAACAGACC	AAGTGCATCATCGTTGTTTCATACA	Mouse
<i>Ccl2</i>	TTAAAAACCTGGATCGGAACCAA	GCATTAGCTTCAGATTTACGGGT	Mouse
<i>Cd16</i>	TTTGGACACCCAGATGTTTCAG	GTCTTCCTTGAGCACCTGGATC	Mouse
<i>Cd32</i>	AATCCTGCCGTTCTACTGATC	GTGTCACCGTGTCTTCCTTGAG	Mouse
<i>Cd68</i>	TTCTGCTGTGGAAATGCAAG	AGAGGGGCTGGTAGGTTGAT	Mouse
<i>Cd86</i>	TGTTTCCGTGGAGACGCAAG	TTGAGCCTTTGTAAATGGGCA	Mouse

Supplementary figure S1. Effect of CHI3L1 deficiency on A β deposition



(A) The deposition of A β plaques in hippocampus was determined by Thioflavin S staining. (B) The levels of A β_{1-42} and (C) A β_{1-40} in mice hippocampus as 100 μ g of tissue lysate, were assessed using the specific ELISA kits. Each value is mean \pm S.E.M. from 8-10 samples. ***, Significantly different between the two groups ($p < 0.001$).

Supplementary figure S2. Relative intensity of each band in Western blots in Figure 3D, 3E, and 6E



The intensity of each band was measured and the ratio of each protein relative to β -actin was calculated. (A, B, C, D) The relative ratio of each protein in Figure 3D were calculated. (E, F, G, H) The relative ratio of each protein in Figure 3E were calculated. (I) The relative ratio of PTX3 in Figure 6E were calculated. Each value is mean \pm S.E.M. from 3 samples. *, Significantly different between the two groups ($p < 0.05$); **, Significantly different between the two groups ($p < 0.01$); ***, Significantly different between the two groups ($p < 0.001$).