

Supporting Information

Diiodido-bis{N-[2-(diphenylphosphino)benzylidene]benzylamine- κ^2N,P }dicopper(I)

Julian Süß¹, Uwe Monkowius^{1,2*} and Manfred Zabel³

¹ School of Education, Chemistry, Johannes Kepler University Linz, Altenbergerstr. 69, A-4040 Linz, Austria

² Institute of Inorganic Chemistry, Johannes Kepler University Linz, Altenbergerstr. 69, A-4040 Linz, Austria

³ Zentrale Analytik der Universität Regensburg, Röntgenstrukturanalyse, Universitätsstr. 31, D-93053 Regensburg, Germany

* Correspondence: uwe.monkowius@jku.at; Tel.: +43-732-2468-7952

Universität Regensburg
Naturwissenschaftliche Fakultät IV - Chemie und Pharmazie
Zentrale Analytik / Mikrolabor

Eingang: 31.07.2007 Ausgang: 02.08.2007
 Probenbezeichnung: UM 184 Analysenbericht Nr. 07071162
 Schmp. _____ °C, Sdp. _____ °C, WO₃-Zugabe ☒
 Bemerkungen: _____
 Anwesende Elemente: C H N S O Cu, I, P
 Zu bestimmen: ☒ ☒ ☒ ☐ _____
 Erwartete Ergebnisse: _____
61,67 %C 4,38 %H 2,77 %N _____ %
 Gefundene Ergebnisse:
 Einwaage:
2,326 mg 55,81 % C 3,97 % H 2,50 % N _____ % S
2,231 mg 55,67 % C 3,96 % H 2,50 % N _____ % S
 _____ mg _____ % C _____ % H _____ % N _____ % S
 _____ mg _____ % _____ % _____ % _____ %
 _____ mg _____ % _____ % _____ % _____ %
 Durchgeführt: i.A. Baumann

Figure S1: Elemental analysis of the title compound.

D:\ms_aug07\yers\lisc46_070802140658 08/02/2007 02:06:58 PM UM 184
tobi Fischer ES-MS (DCM/MeOH + 10 mM NH4Ac) TSQ 7000
lisc46_070802140658 #1 RT: 0.00 AV: 1 SM: 3B NL: 3.47E6
T: + p ESI ms [199.96-1799.98]

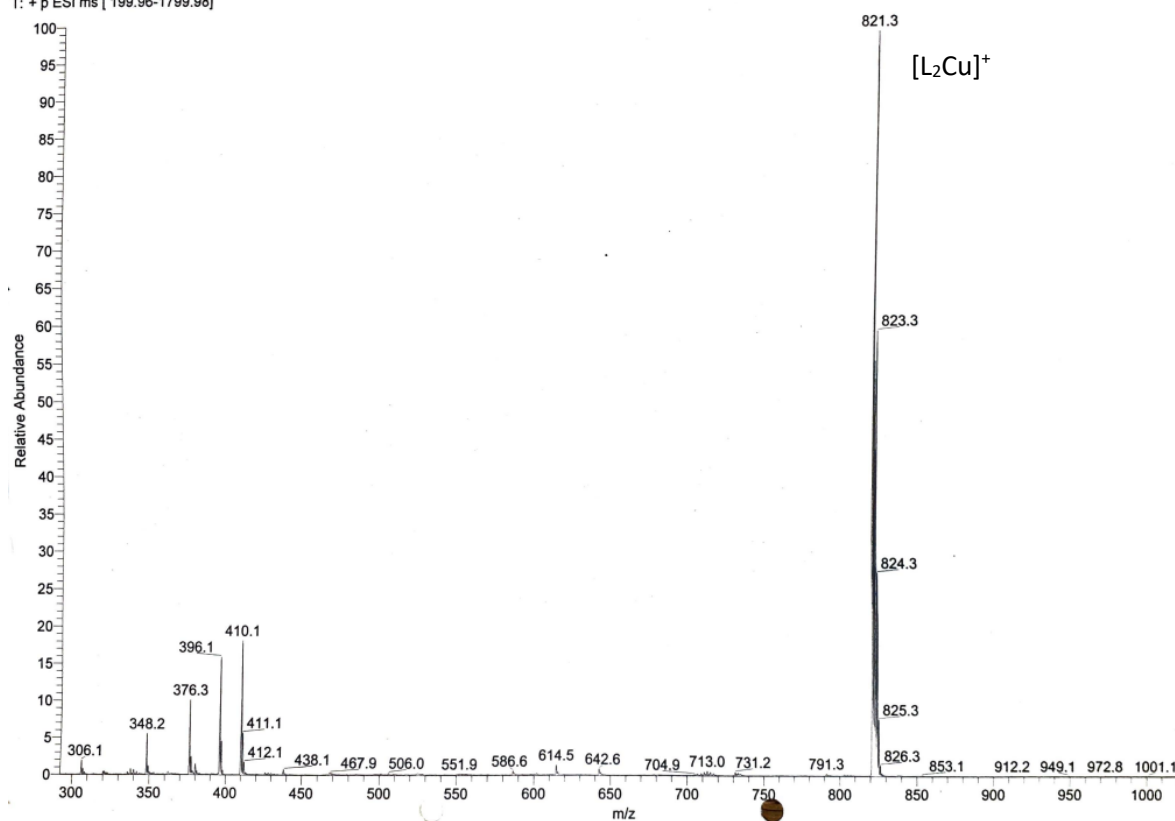


Figure S2: MS(EI) spectrum of the title compound.

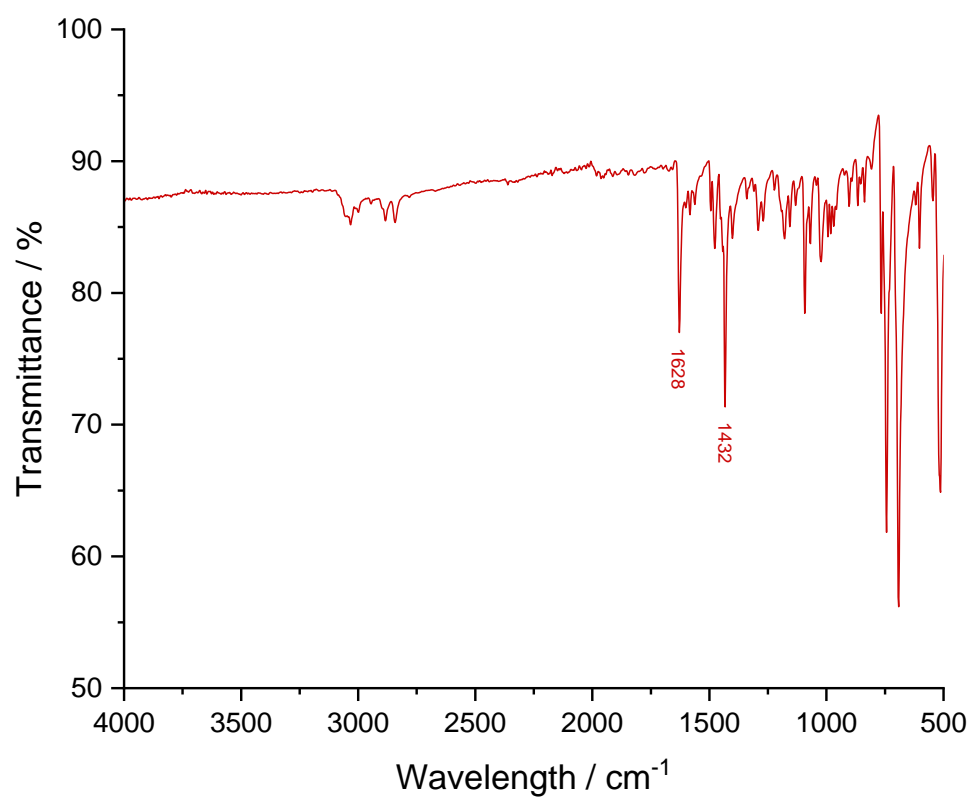


Figure S3: IR-spectrum (ATR) of the title compound.

Table S1. Crystal data and data collection and structure refinement details for **1**.

	1
Empirical formula	C ₅₂ H ₄₄ Cu ₂ I ₂ N ₂ P ₂
<i>M_r</i> , g mol ⁻¹	1139.73
Size, mm ³	0.24×0.18×0.08
Crystal system	Monoclinic
Space group	<i>P</i> 2 ₁ / <i>n</i>
<i>a</i> , Å	15.916(3)
<i>b</i> , Å	9.226(1)
<i>c</i> , Å	15.939(3)
<i>β</i> , deg	95.94(2)
<i>V</i> , Å ³	2328.0(7)
<i>ρ</i> _{calcd.} , g cm ⁻³	1.626
<i>Z</i>	2
<i>μ</i> (Mo- <i>K</i> <i>α</i>), mm ⁻¹	2.346
<i>T</i> , K	297
<i>θ</i> range, deg	2.80-25.91
Measured reflections	24633
Independent reflections	4505
Reflections with <i>I</i> > 2σ(<i>I</i>)	3751
Absorption correction	Analytical
<i>T</i> _{min} / <i>T</i> _{max}	0.8257, 0.5272
Restraints/refined	0/274
<i>R</i> 1 (<i>I</i> ≥ 2σ(<i>I</i>))	0.0321
<i>wR</i> 2	0.0860
<i>ρ</i> _{fin} (max/min), e Å ⁻³	0.79/-0.29
CCDC no.	2334274