

Supplementary Material

Cholestane-3 β ,5 α ,6 β -triol induces multiple cell death in A549 cells via ER stress and autophagy activation

Jiaxi Chen ^{1,†}, Jieping Zhang ^{1,†}, Lijuan Cai ¹, Li Guo ¹, Zhenyu Cai ¹, Hua Han ^{1,*} and Wen Zhang ^{1,2,*}

¹ School of Medicine, Tongji University, 1239 Si-Ping Road, Shanghai 200092, China

² Ningbo Institute of Marine Medicine, Peking University, 56 Kang-Da Road, Ningbo 315832, China

* Correspondence: hanhua@tongji.edu.cn (H.H.); wenzhang1968@163.com (W.Z.)

† These authors contributed equally to this work.

Table of contents

Figure S1. CT induced the cell death of different cell lines.	2
Figure S2. CT induced the cell death of A549 cells at concentration- and time-dependent manner.	3
Figure S3. STS induced the cell death of A549 cells.	3
Figure S4. Western blot of cleaved-PARP and cleaved-caspase-3 in A549 cells.	4
Figure S5. RNA-seq analysis of 10 μ M CT-treated A549 cells.	4
Figure S6. Western blot of p-IRE1 α and LC3 II levels in A549 cell lines treated with CT.	5

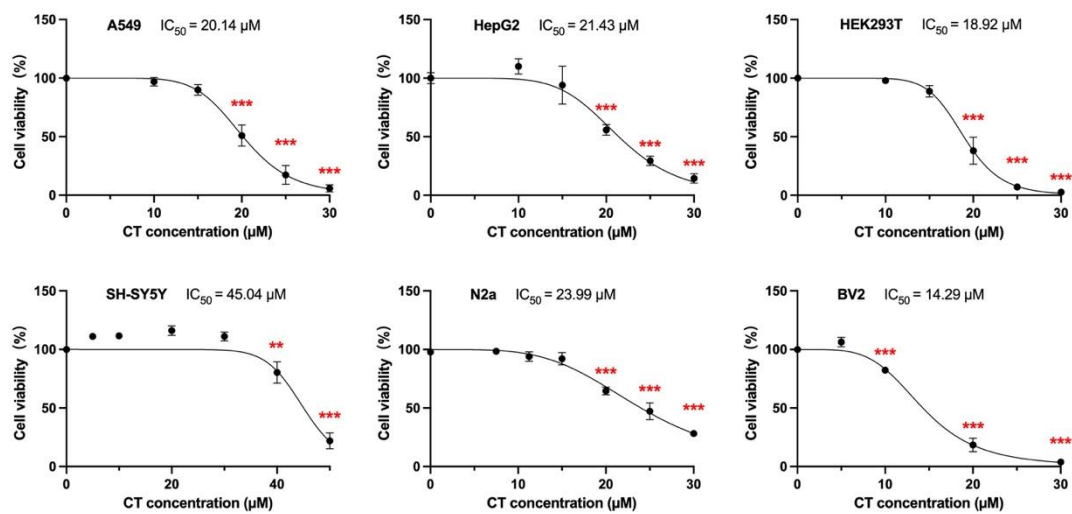


Figure S1. CT induced the cell death of different cell lines. CT inhibited the cell viability of A549, HepG2, HEK293T, SH-SY5Y, N2a, BV2 cells. Cell viability was assessed by CCK-8 kit after the treatment of CT at different concentrations for 24 h. Statistical significance was determined using one-way ANOVA with Dunnett's post-test, ** $p < 0.005$, *** $p < 0.001$ compared with the NC group.

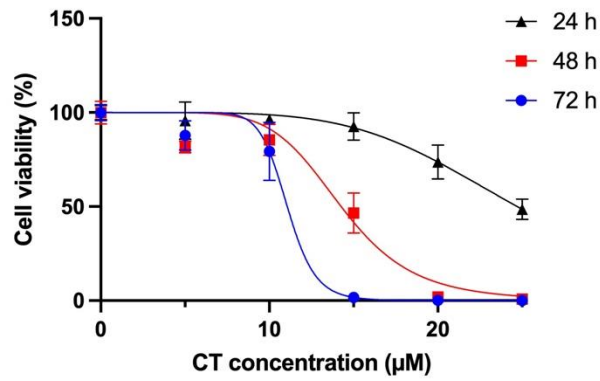


Figure S2. CT induced the cell death of A549 cells at concentration- and time-dependent manner. Cell viability was assessed by CCK-8 kit after the treatment of CT at different concentrations for 24, 48, 72 h.

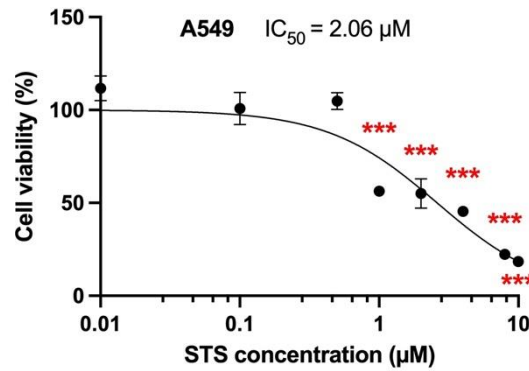


Figure S3. STS induced the cell death of A549 cells. Cell viability was assessed by CCK-8 kit after the treatment of STS at different concentrations for 24 h. Statistical significance was determined using one-way ANOVA with Dunnett's post-test, $n = 2$, *** $p < 0.001$ compared with the NC group.

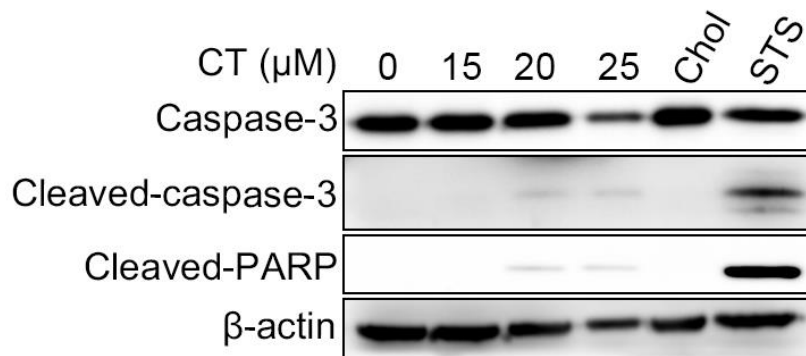


Figure S4. Western blot of cleaved-PARP and cleaved-caspase-3 in A549 cells.

Cells were treated with series doses of CT for 24 h. Cells were treated with 1 μ M STS for 24 h as the positive control, and 20 μ M cholesterol (Chol) for 24 h as an isotype control.

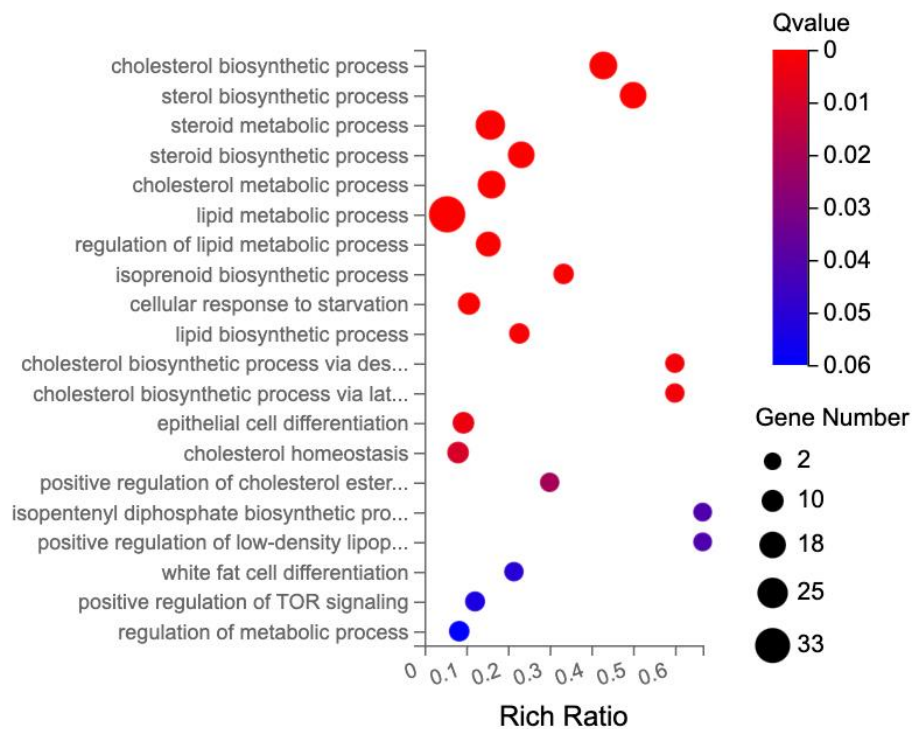


Figure S5. RNA-seq analysis of 10 μ M CT-treated A549 cells. GO analysis of

the upregulated gene clusters in CT 10 μ M treatment groups. The function of Q value ≤ 0.05 was considered as significant enrichment.

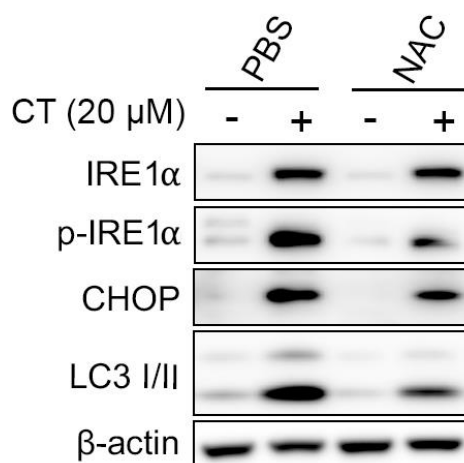


Figure S6. Western blot of p-IRE1 α and LC3 II levels in A549 cell lines treated with CT. The cells were pre-treated with 1 mM 4-PBA or 3 mM NAC for 1 h, then incubated with CT at 20 μ M for 24 h.