

# Introducing the Occupational Health and Safety Potential Midpoint Impact Indicator in Social Life Cycle Assessment

Georgios Archimidis Tsalidis

## Supplementary Material

The supplementary material presents data sources, Figures about Calculated characterization factors when the secondary approach (based on costs) is employed and “Accidents at work by days lost and NACE” of “Crop and animal production, hunting and related service activities”, “Manufacture of textiles”, and “Land transport and transport via pipelines” sectors across Europe.

The data sources for all sector-based data in the manuscript were downloaded from Eurostat.

Sector-based data for Accidents at Work by Days Lost and NACE Rev. 2 Activity can be found online at [https://ec.europa.eu/eurostat/data-browser/view/hsw\\_n2\\_04\\_custom\\_10048280/default/table?lang=en](https://ec.europa.eu/eurostat/data-browser/view/hsw_n2_04_custom_10048280/default/table?lang=en)

Sector-based data for Hours Actually Worked by the Employees per Year can be found online at [https://ec.europa.eu/eurostat/data-browser/view/lfsa\\_ewhan2/default/table?lang=en](https://ec.europa.eu/eurostat/data-browser/view/lfsa_ewhan2/default/table?lang=en)

Sector-based data for Turnover or Gross Premiums Written—Million Euro can be found online at [https://ec.europa.eu/eurostat/data-browser/view/STS\\_TRTU\\_A/default/table?lang=en](https://ec.europa.eu/eurostat/data-browser/view/STS_TRTU_A/default/table?lang=en)

Figure S1. “Accidents at work by days lost and NACE” of “Crop and animal production, hunting and related service activities” sector across Europe

Figure S2. “Accidents at work by days lost and NACE” of “Manufacture of textiles” sector across Europe

Figure S3. “Accidents at work by days lost and NACE” of “Land transport and transport via pipelines” sector across Europe

Table S1. Calculated characterization factors with the secondary approach (based on costs)

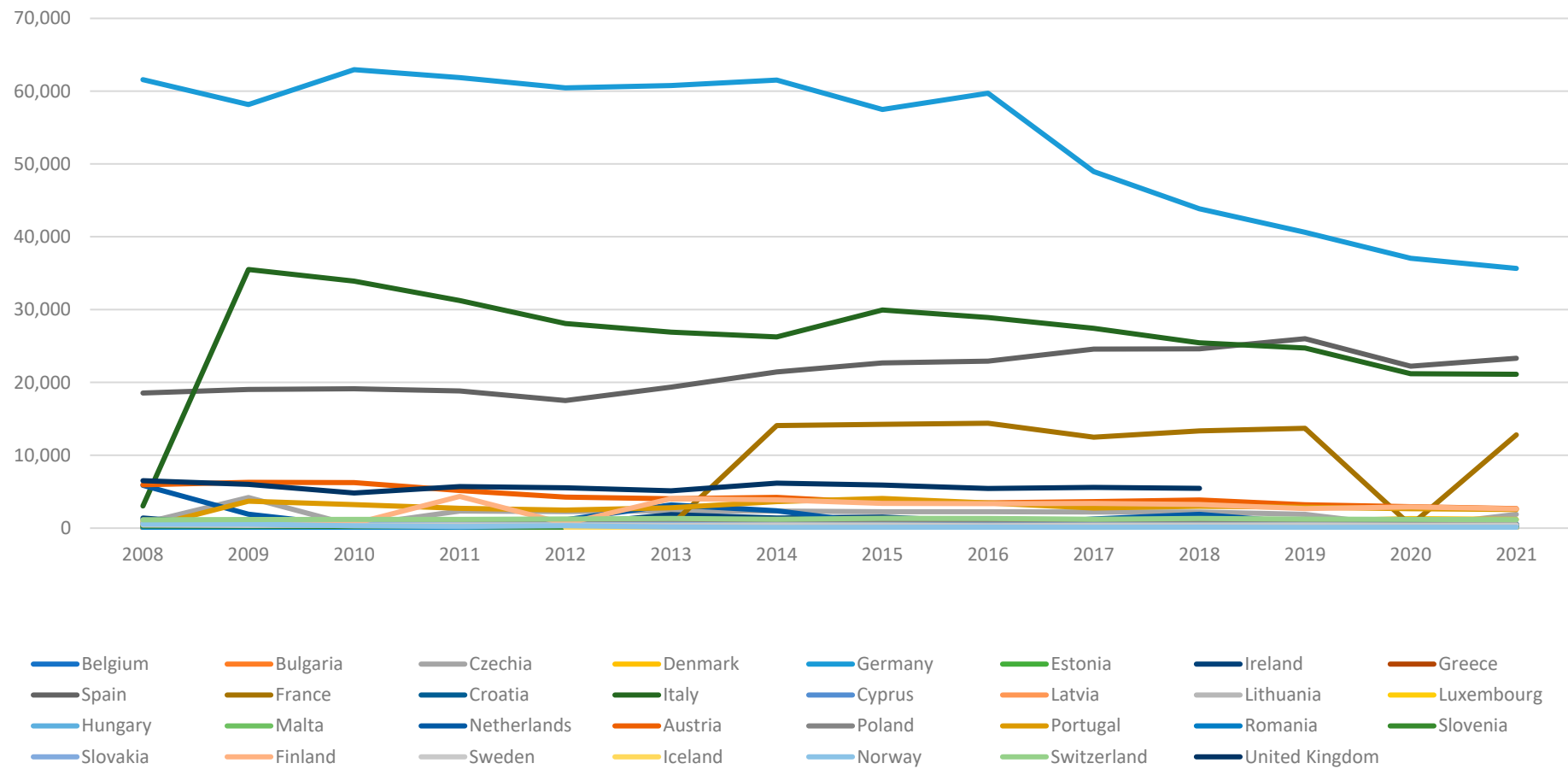


Figure S1. "Accidents at work by days lost and NACE" of "Crop and animal production, hunting and related service activities" sector across Europe

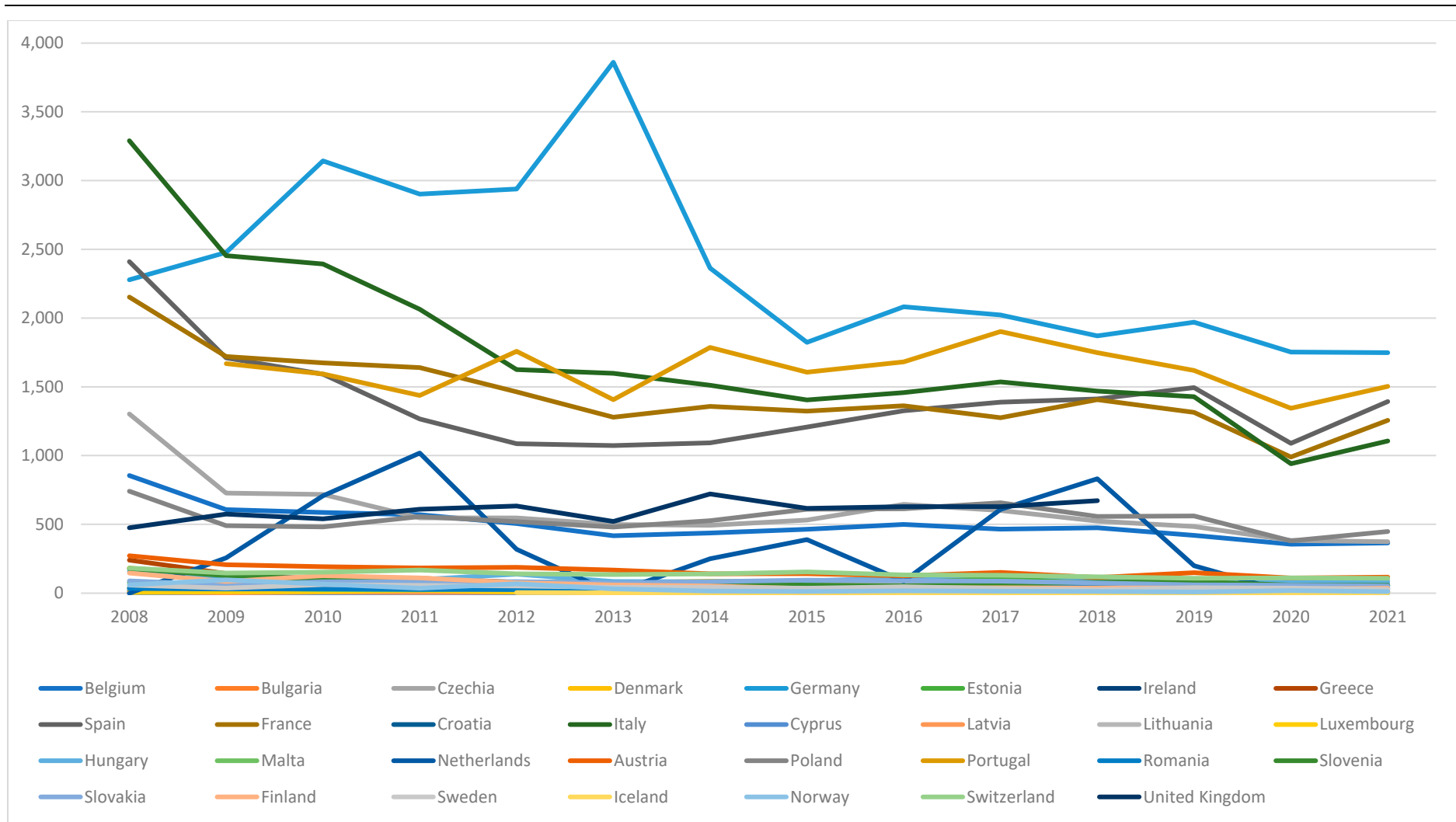


Figure S2. "Accidents at work by days lost and NACE" of "Manufacture of textiles" sector across Europe

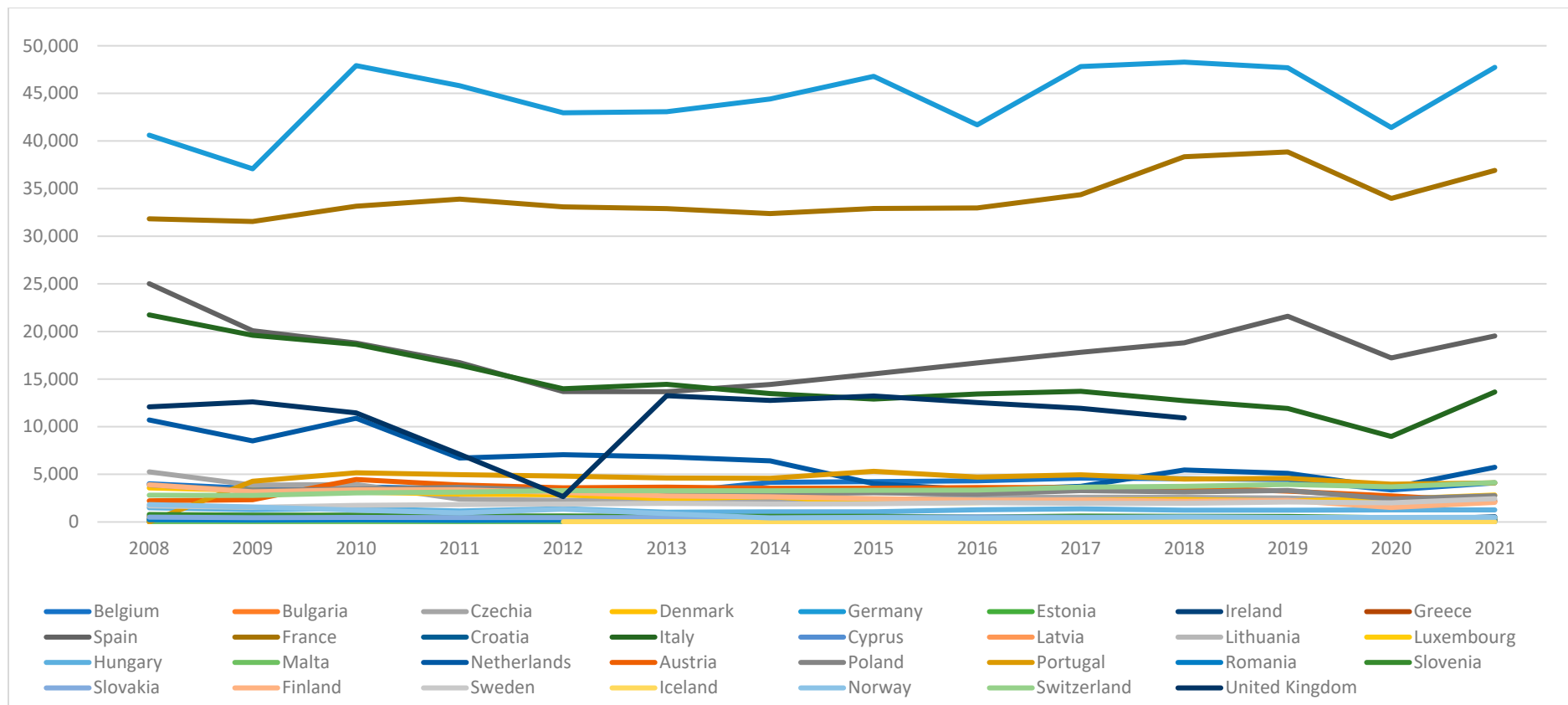


Figure S3. "Accidents at work by days lost and NACE" of "Land transport and transport via pipelines" sector across Europe



Table S1. Calculated characterization factors with the secondary approach (based on costs)

Locations	Cotton production	Shirt production	Shirt distribution
EU supply chain			
Spain	$1.20 \times 10^{-9}$	-	-
Portugal	-	$1.38 \times 10^{-5}$	-
Portugal	-	-	$7.34 \times 10^{-6}$
Global supply chain			
USA	$1.82 \times 10^{-5}$	-	-
Belgium	-	$6.08 \times 10^{-7}$	-
Belgium	-	-	$1.62 \times 10^{-5}$