

Supplementary Material

Fluorosolvatochromism of Platinum Supramolecular Coordination Complexes: Stepwise Synthesis and Photophysical Properties of Organometallic Tetranuclear Pt(II) Squares

Antonia Garypidou ^{1,*}, Konstantinos Ypsilantis ¹ and Achilleas Garoufis ^{1,2,*}

¹ Department of Chemistry, University of Ioannina, GR-45110 Ioannina, Greece; k_ypsilantis@yahoo.gr

² Institute of Materials Science and Computing, University Research Centre of Ioannina (URCI), GR-45110 Ioannina, Greece

* Correspondence: a.garypidou@uoi.gr (A.G.); agaroufi@uoi.gr (A.G.)

TABLE OF CONTENTS

Figure S1. ¹HNMR of complex [Pt(COD)Cl]₂(μ-terph) (**1**) in CD₂Cl₂ in 500 MHz 298K.

Figure S2. Aromatic region of ¹HNMR of complex [Pt(2,2'-bpy)Cl]₂(μ-terph) (**2**) in CD₂Cl₂ in 500 MHz 298K.

Figure S3. Aromatic region of ¹H-¹H COSY spectrum of complex [Pt(2,2'-bpy)Cl]₂(μ-terph) (**2**) in CD₂Cl₂ in 500 MHz 298 K with assignment cross-peaks.

Figure S4. Aromatic region of ¹H-¹H ROESY spectrum of the complex (**2**) in CD₂Cl₂ in 500 MHz 298 K with assignment cross-peaks.

Figure S5. HR-ESI MS spectrum of complex [Pt(2,2'-bpy)Cl]₂(μ-terph) (**2**).

Figure S6. HR-ESI MS spectrum of complex {[Pt(2,2'-bpy)(CH₃CN)]₂(μ-terph)}(NO₃)₂ (**3**).

Figure S7. Aromatic region of ¹H-¹H COSY (a) and ¹H-¹H TOCSY (b) spectra of complex {[Pt(2,2'-bpy)(CH₃CN)]₂(μ-terph)}(NO₃)₂ (**3**) in DMSO-d₆ in 500 MHz 298 K with assignment cross-peaks.

Figure S8. Aromatic region of ¹H-¹H COSY (a) and ¹H-¹H TOCSY (b) spectra of complex {[Pt(2,2'-bpy)]₄(μ-terph)₂(μ-(4,4'-bpy)₂)}{PF₆}₄ (**7**) in DMSO-d₆ in 500 MHz 298 K with assignment cross-peaks.

Figure S9. Aromatic region of ¹H-¹H ROESY spectra of the complex (**8**) (a) and (**9**) (b) in DMSO-d₆ at 298 K in 500 MHz with assignment at inter-ligand cross-peaks.

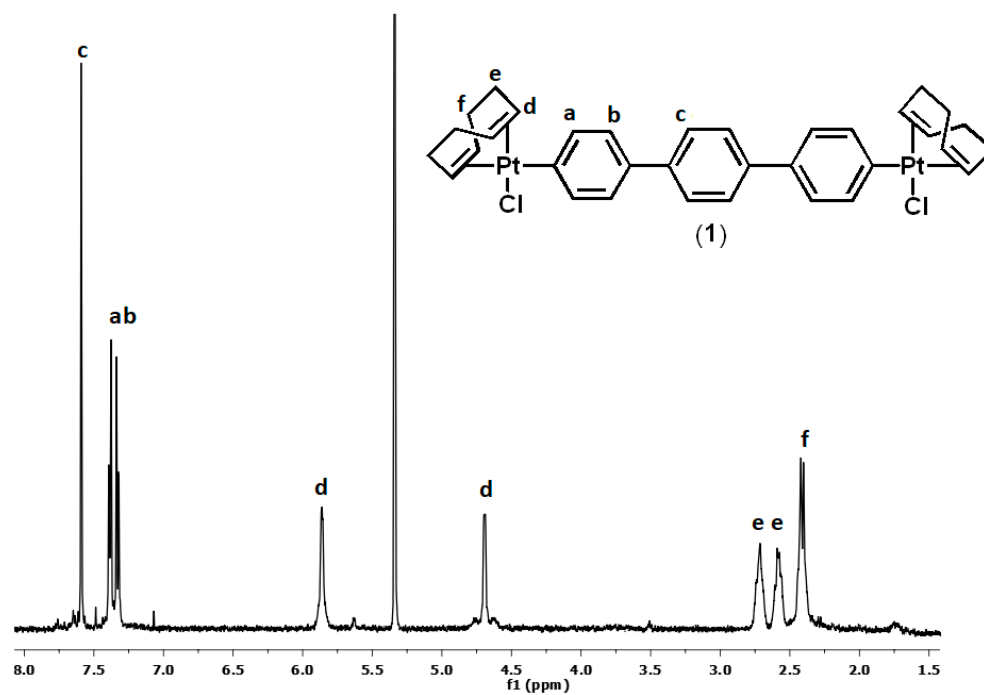


Figure S1. ^1H NMR of complex $[\text{Pt}(\text{COD})\text{Cl}]_2(\mu\text{-terph})$ (1) in CD_2Cl_2 in 500 MHz 298K.

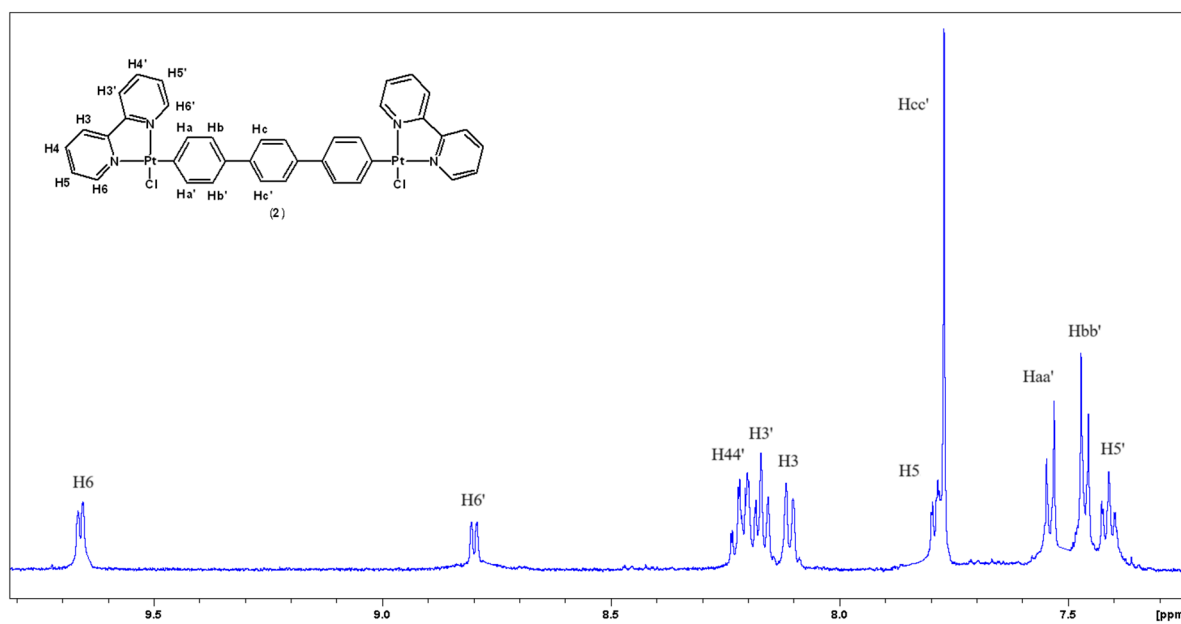


Figure S2. Aromatic region of ^1H NMR of complex $[\text{Pt}(2,2'\text{-bpy})\text{Cl}]_2(\mu\text{-terph})$ (2) in CD_2Cl_2 in 500 MHz 298K.

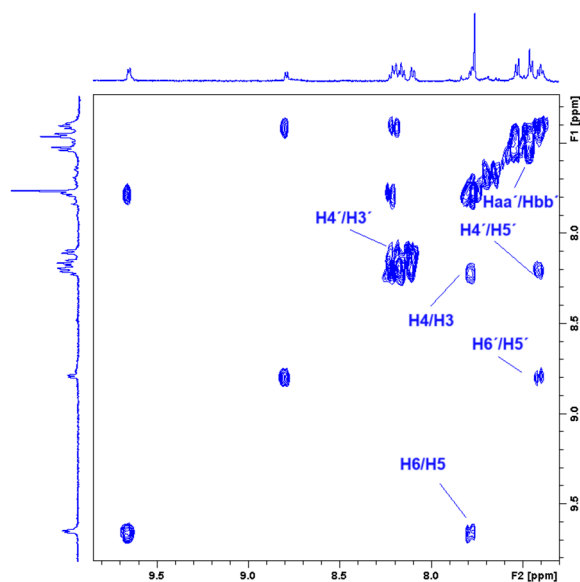


Figure S3. Aromatic region of ^1H - ^1H COSY spectrum of complex $[\text{Pt}(2,2'\text{-bpy})\text{Cl}]_2(\mu\text{-terph})$ (**2**) in CD_2Cl_2 in 500 MHz 298 K with assignment cross-peaks.

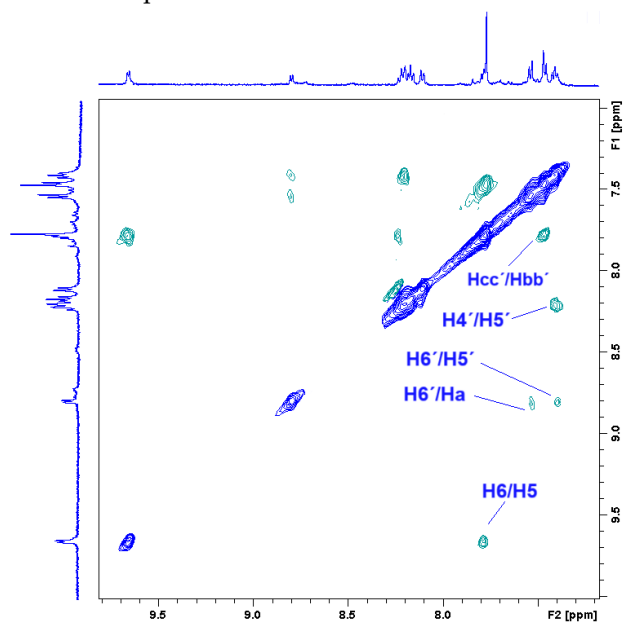


Figure S4. Aromatic region of ROESY spectrum of the complex (**2**) in CD_2Cl_2 in 500 MHz 298 K with cross-peaks assignment.

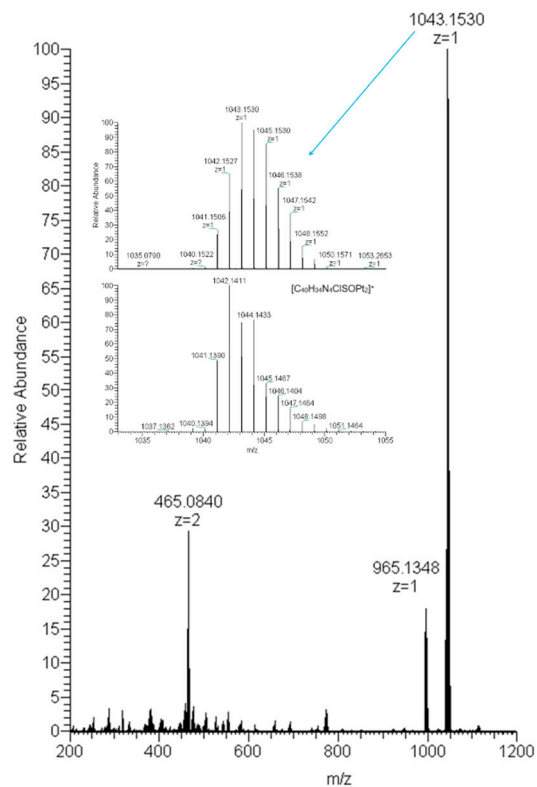


Figure S5. HR-ESI MS spectrum of complex $[\text{Pt}(2,2'\text{-bpy})\text{Cl}]_2(\mu\text{-terph})$ (2).

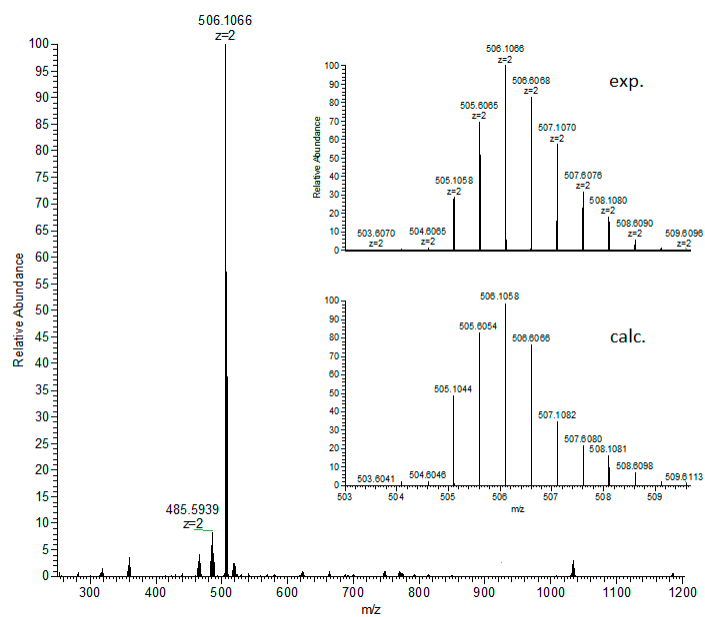


Figure S6. HR-ESI MS spectrum of complex $\{[\text{Pt}(2,2'\text{-bpy})(\text{CH}_3\text{CN})]_2(\mu\text{-terph})\}(\text{NO}_3)_2$ (3).

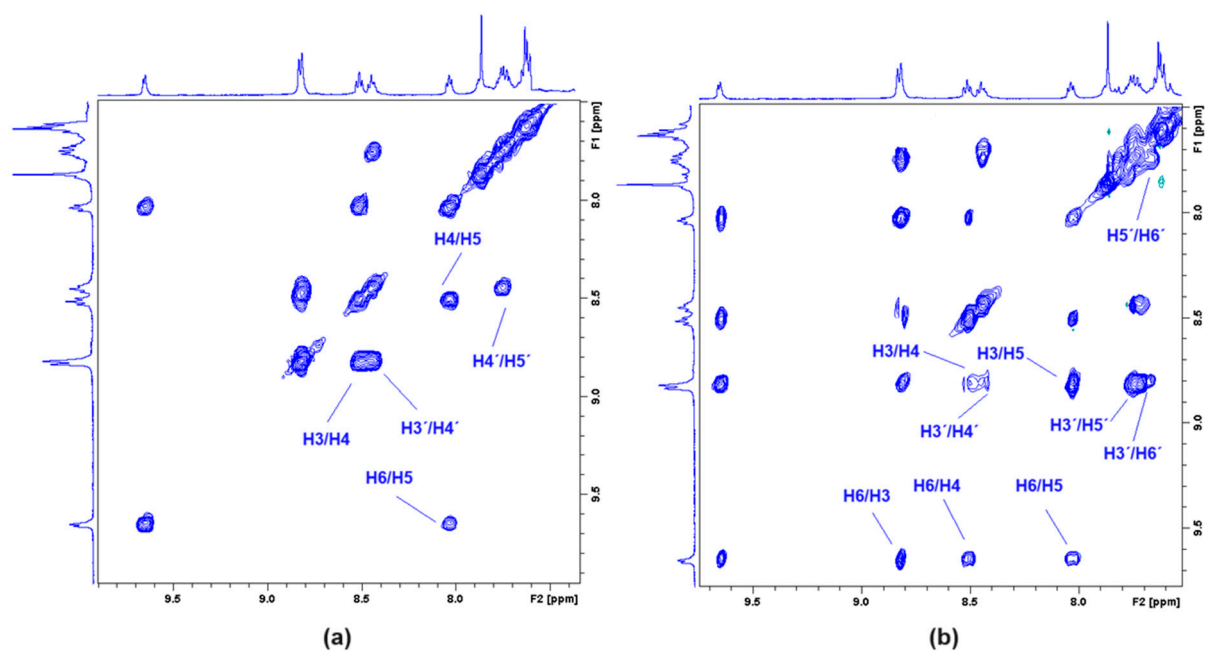


Figure S7. Aromatic region of ^1H - ^1H COSY (a) and ^1H - ^1H TOCSY (b) spectra of complex $\{[\text{Pt}(2,2'\text{-bpy})(\text{CH}_3\text{CN})]_2(\mu\text{-terph})\}(\text{NO}_3)_2$ (**3**) in DMSO-d_6 in 500 MHz 298 K with assignment cross-peaks.

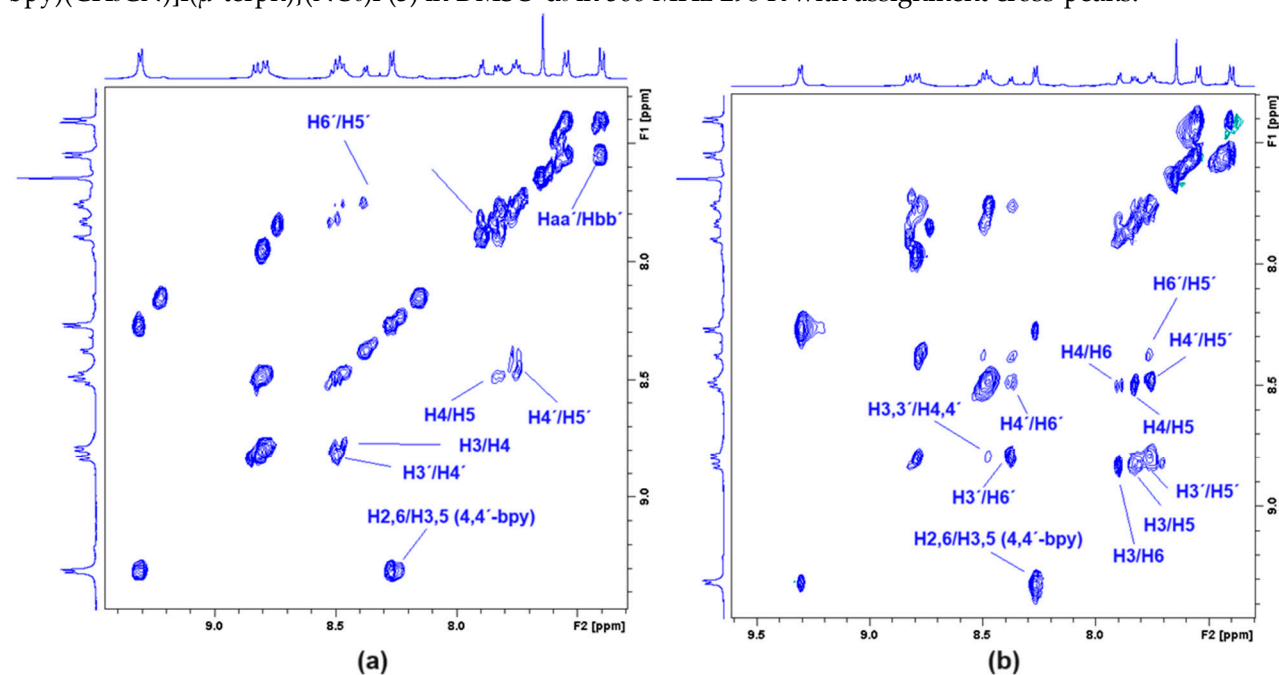


Figure S8. Aromatic region of ^1H - ^1H COSY (a) and ^1H - ^1H TOCSY (b) spectra of complex $\{[\text{Pt}(2,2'\text{-bpy})]_4(\mu\text{-terph})_2(\mu\text{-(4,4'-bpy)}_2)\}(\text{PF}_6)_4$ (**7**) in DMSO-d_6 in 500 MHz 298 K with assignment cross-peaks.

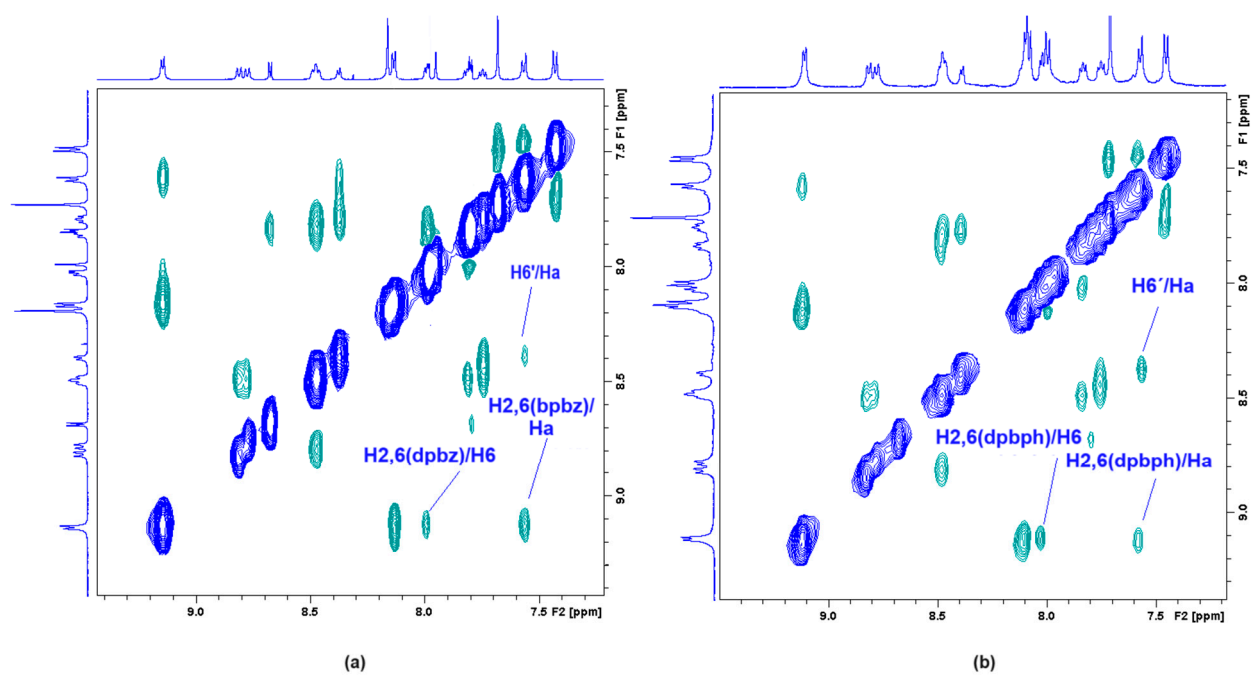


Figure S9. Aromatic region of ^1H - ^1H ROESY spectra of the complex (8) (a) and (9) (b) in DMSO-d_6 at 298 K in 500 MHz with assignment at inter-ligand cross-peaks.