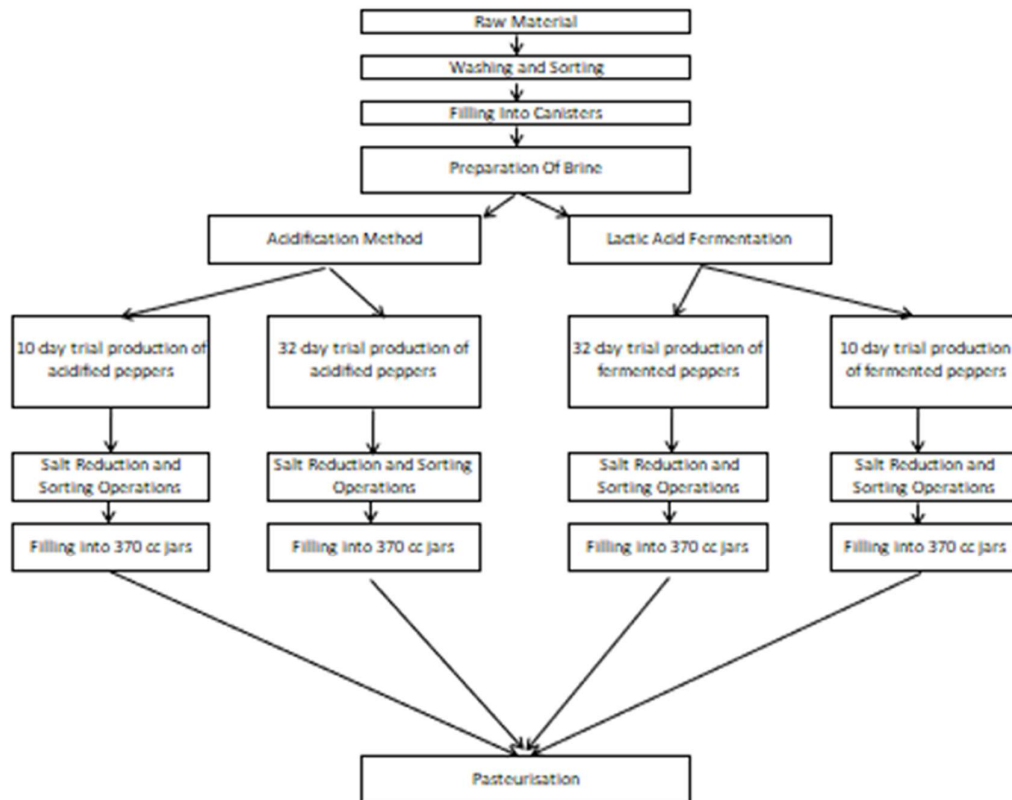


## SUPPLEMENTARY INFORMATION

### Lactic Acid Bacteria Isolation from Üçburun Peppers and Comparison of the Different Production Process for Pickled Pepper

Ali Nalbant and Esra Ersoy Omeroglu \*



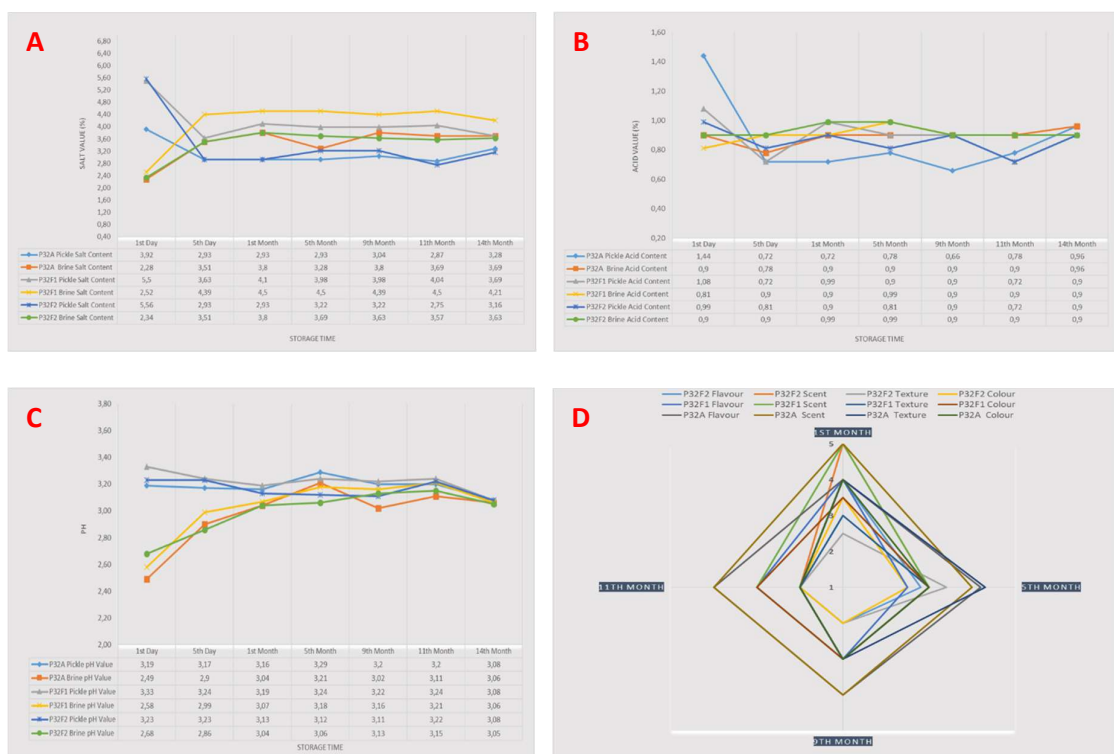
**Figure S1.** Flow Chart of Assay Production.



**Figure S2.** Pickled jars of Üçburun peppers pickled.



**Figure S3.** Results of chemical analysis performed during storage of products produced with semi-finished products taken on the 10th day of fermentation. **A:** salt content, **B:** acid content, **C:** pH value, **D:** flavor, texture, scent and colour.



**Figure S4.** Results of chemical analysis performed during storage of products produced with semi-finished products taken on the 32nd day of fermentation. **A:** salt content, **B:** acid content, **C:** pH value, **D:** flavor, texture, scent and colour.

**Table S1.** Microbiological analysis results on the 4th day, 7th month and 14th month of storage.

Sample No	Storage Time	Total Aerobic Mesophilic Microorganism Counts (CFU/g)	Yeast Count (CFU/g)	Mold Count (CFU/g)	LAB Counts (CFU/g)
P10A	4 <sup>th</sup> Day	$3,0 \times 10^1$	<10	<10	<10
	7 <sup>th</sup> Month	<10	<10	<10	<10
	14 <sup>th</sup> Month	<10	<10	<10	<10
P10F	4 <sup>th</sup> Day	$3,8 \times 10^1$	<10	<10	<10
	7 <sup>th</sup> Month	<10	<10	<10	<10
	14 <sup>th</sup> Month	<10	<10	<10	<10
P32A	4 <sup>th</sup> Day	<10	<10	<10	<10
	1 <sup>st</sup> Month	<10	<10	<10	<10
	5 <sup>th</sup> Month	<10	<10	<10	<10
	10 <sup>th</sup> Month	<10	<10	<10	<10
	24 <sup>th</sup> Month	<10	<10	<10	<10
P32F1	4 <sup>th</sup> Day	<10	<10	<10	<10
	1 <sup>st</sup> Month	$4,0 \times 10^1$	$2,9 \times 10^4$	<10	<10
	5 <sup>th</sup> Month	<10	<10	<10	<10
	10 <sup>th</sup> Month	$3,6 \times 10^3$	$4,6 \times 10^3$	<10	$5,0 \times 10^3$
P32F2	4 <sup>th</sup> Day	$8,5 \times 10^1$	$4,3 \times 10^3$	<10	<10
	1 <sup>st</sup> Month	$7,0 \times 10^1$	$2,5 \times 10^4$	<10	<10
	5 <sup>th</sup> Month	<10	<10	<10	<10
	10 <sup>th</sup> Month	$7,6 \times 10^3$	$6,7 \times 10^3$	<10	$1,3 \times 10^4$