

Antifungal effect of Penicillamine due to the selective targeting of L-homoserine O-acetyltransferase

Aleksandra Kuplińska, Kamila Rząd, Marek Wojciechowski, Sławomir Milewski and Iwona Gabriel*

Department of Pharmaceutical Technology and Biochemistry, Gdansk University of Technology, Gdansk, Poland; aleksandra.kuplinska@pg.edu.pl (A.K.); kamila.rzad@pg.edu.pl (K.R.); marek.wojciechowski@pg.edu.pl (M.W.); slawomir.milewski@pg.edu.pl (S.M.); iwona.gabriel@pg.edu.pl (I.G.) * Correspondence: iwona.gabriel@pg.edu.pl (I.G.); Tel.: +48-58-348-6078 ; Fax: +48-58-347-1144

Table of contents:

1. The multiple sequence alignment of amino acids sequences from 60 microorganisms from the <i>Ascomycota</i> group	2
2. Phylogenetic tree of amino acid sequences from 60 microorganisms from the <i>Ascomycota</i> group	7
3. Conservation of characteristic amino acid motifs in L-homoserine O-acetyltransferase sequences.....	8
4. Overproduction of <i>CaMet2p</i> and <i>CaMet2NHp</i> in <i>E. coli</i> cells.....	8
5. SDS-PAGE or Western blot analysis of enzymes overproduction and purification.....	9
6. Phylogenetic tree of <i>Met2p</i> from various organisms.....	9
7. References.....	9

		1	10	20	30
<i>Candida albicans</i>	ref XP_718283.1	MT.....YKDV	TEEQLO..INPYVKLVPG	QIVPEPVTLE	
<i>Candida dubliniensis</i>	ref XP_002421791.1	MT.....YKDV	TEEQLO..INPYVKLVPG	QIVPEPVTLE	
<i>Candida tropicalis</i>	ref XP_002546119.1	MT.....YKDV	TEEQLO..INPYVKLVPG	QIVPEPVTLE	
<i>Candida orthopositii</i>	ref XP_00385973.1	MT.....YKDV	TEEQLO..INPYVKLVPG	QIVPEPVTLE	
<i>Candida parapsilosis</i>	ref XP_036664758.1	MT.....YKDV	TEEQLO..INPYVKLVPG	QIVPEPVTLE	
<i>Candida maltosa</i>	ref EMG48875.1	MT.....YKDV	TEEQLO..INPYVKLVPG	QIVPEPVTLE	
<i>Suhomyces tanzawaensis</i>	ref XP_020067300.1	MT.....YKDV	TEEQLO..INPYVKLVPG	QIVPEPVTLE	
<i>Candida metapsilosis</i>	ref KAG5420916.1	MT.....YKDV	TEEQLO..INPYVKLVPG	QIVPEPVTLE	
<i>Candida subhashii</i>	ref KAG7662799.1	MT.....YKDV	TEEQLO..INPYVKLVPG	QIVPEPVTLE	
<i>Scheffersomyces stipitis</i>	ref XP_001383339.1	MT.....YKDV	TEEQLO..INPYVKLVPG	QIVPEPVTLE	
<i>Yamadazyma tenuis</i>	ref XP_006685252.1	MT.....YKDV	TEEQLO..INPYVKLVPG	QIVPEPVTLE	
<i>Spathaspora passalidarum</i>	ref XP_007374001.1	MT.....YKDV	TEEQLO..INPYVKLVPG	QIVPEPVTLE	
<i>Dutina rugosa</i>	ref XP_034010932.1	MT.....YKDV	TEEQLO..INPYVKLVPG	QIVPEPVTLE	
<i>Millerozyma farinosa</i>	emb CCB85520.1	MT.....YKDV	TEEQLO..INPYVKLVPG	QIVPEPVTLE	
<i>Debaryomyces fabryi</i>	ref XP_015466149.1	MT.....YKDV	TEEQLO..INPYVKLVPG	QIVPEPVTLE	
<i>Debaryomyces hansenii</i>	ref XP_460331.1	MT.....YKDV	TEEQLO..INPYVKLVPG	QIVPEPVTLE	
<i>Candida viswanathii</i>	ref RCK59094.1	MT.....YKDV	TEEQLO..INPYVKLVPG	QIVPEPVTLE	
<i>Hyphopichia burtonii</i>	ref XP_020074237.1	MT.....YKDV	TEEQLO..INPYVKLVPG	QIVPEPVTLE	
<i>Candida auris</i>	ref P1551135.1	MT.....YKDV	TEEQLO..INPYVKLVPG	QIVPEPVTLE	
<i>Clavispora lusitanae</i>	ref KAF5210728.1	MT.....YKDV	TEEQLO..INPYVKLVPG	QIVPEPVTLE	
<i>Scheffersomyces spartinae</i>	ref XP_043049351.1	MT.....YKDV	TEEQLO..INPYVKLVPG	QIVPEPVTLE	
<i>Zygosaccharomyces parabolii</i>	ref AGZ18953.1	MT.....YKDV	TEEQLO..INPYVKLVPG	QIVPEPVTLE	
<i>Zygosaccharomyces bailii</i>	emb SJM88098.1	MT.....YKDV	TEEQLO..INPYVKLVPG	QIVPEPVTLE	
<i>Kluyveromyces marxianus</i>	ref KAG0681669.1	MT.....YKDV	TEEQLO..INPYVKLVPG	QIVPEPVTLE	
<i>Kluyveromyces lactis</i>	ref QEU60244.1	MT.....YKDV	TEEQLO..INPYVKLVPG	QIVPEPVTLE	
<i>Terfezia boudieri</i>	ref RFB22791.1	MT.....YKDV	TEEQLO..INPYVKLVPG	QIVPEPVTLE	
<i>Trimausa ulvea</i>	ref KAF8420454.1	MT.....YKDV	TEEQLO..INPYVKLVPG	QIVPEPVTLE	
<i>Kalaharihuber piefilii</i>	ref KAF8471959.1	MT.....YKDV	TEEQLO..INPYVKLVPG	QIVPEPVTLE	
<i>Terfezia clavervii</i>	ref KAF8455951.1	MT.....YKDV	TEEQLO..INPYVKLVPG	QIVPEPVTLE	
<i>Nannozyma castellii</i>	ref XP_003673005.1	MT.....YKDV	TEEQLO..INPYVKLVPG	QIVPEPVTLE	
<i>Pachysolen tanophyllus</i>	ref XP_020074237.1	MT.....YKDV	TEEQLO..INPYVKLVPG	QIVPEPVTLE	
<i>Wickerhamomyces ciferrii</i>	ref XP_011272307.1	MT.....YKDV	TEEQLO..INPYVKLVPG	QIVPEPVTLE	
<i>Lachancea dasiensis</i>	emb SCU96634.1	MT.....YKDV	TEEQLO..INPYVKLVPG	QIVPEPVTLE	
<i>Lipomyces starkeyi</i>	ref ODQ74338.1	MT.....YKDV	TEEQLO..INPYVKLVPG	QIVPEPVTLE	
<i>Saitoella complicata</i>	ref GAG051702.1	MT.....YKDV	TEEQLO..INPYVKLVPG	QIVPEPVTLE	
<i>Torulopsis globosa</i>	ref XP_037137900.1	MT.....YKDV	TEEQLO..INPYVKLVPG	QIVPEPVTLE	
<i>Ascoidea rubescens</i>	ref XP_020048617.1	MT.....YKDV	TEEQLO..INPYVKLVPG	QIVPEPVTLE	
<i>Ogataea philodendri</i>	ref XP_046063080.1	MT.....YKDV	TEEQLO..INPYVKLVPG	QIVPEPVTLE	
<i>Lachancea nollifagi</i>	emb SCV03058.1	MT.....YKDV	TEEQLO..INPYVKLVPG	QIVPEPVTLE	
<i>Eremothecium gossypii</i>	ref NP_986230.1	MT.....YKDV	TEEQLO..INPYVKLVPG	QIVPEPVTLE	
<i>Trichomonascus ciferrii</i>	ref KAA8897105.1	MT.....YKDV	TEEQLO..INPYVKLVPG	QIVPEPVTLE	
<i>Autographum hederace</i>	ref KAF1990932.1	MT.....YKDV	TEEQLO..INPYVKLVPG	QIVPEPVTLE	
<i>Lachancea lanzarotensis</i>	ref XP_022630543.1	MT.....YKDV	TEEQLO..INPYVKLVPG	QIVPEPVTLE	
<i>Cyberlindnera fabianii</i>	emb CDR47813.1	MT.....YKDV	TEEQLO..INPYVKLVPG	QIVPEPVTLE	
<i>Wickerhamiella sorbophila</i>	ref XP_024662504.1	MT.....YKDV	TEEQLO..INPYVKLVPG	QIVPEPVTLE	
<i>Lophiostoma macrostromum</i>	ref KAF2652156.1	MT.....YKDV	TEEQLO..INPYVKLVPG	QIVPEPVTLE	
<i>Sphaeroporella brunnea</i>	ref KAA8892634.1	MT.....YKDV	TEEQLO..INPYVKLVPG	QIVPEPVTLE	
<i>Ramularia collo-cygni</i>	ref XP_023631861.1	MT.....YKDV	TEEQLO..INPYVKLVPG	QIVPEPVTLE	
<i>Eremomyces bilateralis</i>	ref XP_033534262.1	MT.....YKDV	TEEQLO..INPYVKLVPG	QIVPEPVTLE	
<i>Coleophoma crateriformis</i>	ref RDW64025.1	MT.....YKDV	TEEQLO..INPYVKLVPG	QIVPEPVTLE	
<i>Penicillium rolfii</i>	ref KAF3396381.1	MT.....YKDV	TEEQLO..INPYVKLVPG	QIVPEPVTLE	
<i>Amorphotheca resinacea</i>	ref XP_024718197.1	MT.....YKDV	TEEQLO..INPYVKLVPG	QIVPEPVTLE	
<i>Chalara longipes</i>	ref KAE3970763.1	MT.....YKDV	TEEQLO..INPYVKLVPG	QIVPEPVTLE	
<i>Aspergillus terreus</i>	ref KAG2412800.1	MT.....YKDV	TEEQLO..INPYVKLVPG	QIVPEPVTLE	
<i>Aspergillus nidulans</i>	ref XP_026603423.1	MT.....YKDV	TEEQLO..INPYVKLVPG	QIVPEPVTLE	
<i>Hyaloscypha variabilis</i>	ref PMD46603.1	MT.....YKDV	TEEQLO..INPYVKLVPG	QIVPEPVTLE	
<i>Talaromyces marneffii</i>	ref XP_002145444.1	MT.....YKDV	TEEQLO..INPYVKLVPG	QIVPEPVTLE	
<i>Aspergillus phoenicis</i>	ref RDK39989.1	MT.....YKDV	TEEQLO..INPYVKLVPG	QIVPEPVTLE	
<i>Aspergillus niger</i>	ref XP_001398292.1	MT.....YKDV	TEEQLO..INPYVKLVPG	QIVPEPVTLE	
<i>Trichodeltschia bisporula</i>	ref KAF2400853.1	MT.....YKDV	TEEQLO..INPYVKLVPG	QIVPEPVTLE	
<i>Candida albicans</i>	ref XP_718283.1	CGEILHNFPYAYKTI	GRNDEAKNVLVIGHAL	TGSSDVQDWWGGLGDRAFD
<i>Candida dubliniensis</i>	ref XP_002421791.1	CGEILHNFPYAYKTI	GRNDEAKNVLVIGHAL	TGSSDVQDWWGGLGDRAFD
<i>Candida tropicalis</i>	ref XP_002546119.1	CGEILHNFPYAYKTI	GRNDEAKNVLVIGHAL	TGSSDVQDWWGGLGDRAFD
<i>Candida orthopositii</i>	ref XP_00385973.1	CGEILHNFPYAYKTI	GRNDEAKNVLVIGHAL	TGSSDVQDWWGGLGDRAFD
<i>Candida parapsilosis</i>	ref XP_036664758.1	CGEILHNFPYAYKTI	GRNDEAKNVLVIGHAL	TGSSDVQDWWGGLGDRAFD
<i>Candida maltosa</i>	ref EMG48875.1	CGEILHNFPYAYKTI	GRNDEAKNVLVIGHAL	TGSSDVQDWWGGLGDRAFD
<i>Suhomyces tanzawaensis</i>	ref XP_020067300.1	CGEILHNFPYAYKTI	GRNDEAKNVLVIGHAL	TGSSDVQDWWGGLGDRAFD
<i>Candida metapsilosis</i>	ref KAG5420916.1	CGEILHNFPYAYKTI	GRNDEAKNVLVIGHAL	TGSSDVQDWWGGLGDRAFD
<i>Candida subhashii</i>	ref KAG7662799.1	CGEILHNFPYAYKTI	GRNDEAKNVLVIGHAL	TGSSDVQDWWGGLGDRAFD
<i>Scheffersomyces stipitis</i>	ref XP_001383339.1	CGEILHNFPYAYKTI	GRNDEAKNVLVIGHAL	TGSSDVQDWWGGLGDRAFD
<i>Yamadazyma tenuis</i>	ref XP_006685252.1	CGEILHNFPYAYKTI	GRNDEAKNVLVIGHAL	TGSSDVQDWWGGLGDRAFD
<i>Spathaspora passalidarum</i>	ref XP_007374001.1	CGEILHNFPYAYKTI	GRNDEAKNVLVIGHAL	TGSSDVQDWWGGLGDRAFD
<i>Dutina rugosa</i>	ref XP_034010932.1	CGEILHNFPYAYKTI	GRNDEAKNVLVIGHAL	TGSSDVQDWWGGLGDRAFD
<i>Millerozyma farinosa</i>	emb CCB85520.1	CGEILHNFPYAYKTI	GRNDEAKNVLVIGHAL	TGSSDVQDWWGGLGDRAFD
<i>Debaryomyces fabryi</i>	ref XP_015466149.1	CGEILHNFPYAYKTI	GRNDEAKNVLVIGHAL	TGSSDVQDWWGGLGDRAFD
<i>Debaryomyces hansenii</i>	ref XP_460331.1	CGEILHNFPYAYKTI	GRNDEAKNVLVIGHAL	TGSSDVQDWWGGLGDRAFD
<i>Candida viswanathii</i>	ref RCK59094.1	CGEILHNFPYAYKTI	GRNDEAKNVLVIGHAL	TGSSDVQDWWGGLGDRAFD
<i>Hyphopichia burtonii</i>	ref XP_020074237.1	CGEILHNFPYAYKTI	GRNDEAKNVLVIGHAL	TGSSDVQDWWGGLGDRAFD
<i>Candida auris</i>	ref P1551135.1	CGEILHNFPYAYKTI	GRNDEAKNVLVIGHAL	TGSSDVQDWWGGLGDRAFD
<i>Clavispora lusitanae</i>	ref KAF5210728.1	CGEILHNFPYAYKTI	GRNDEAKNVLVIGHAL	TGSSDVQDWWGGLGDRAFD
<i>Scheffersomyces spartinae</i>	ref XP_043049351.1	CGEILHNFPYAYKTI	GRNDEAKNVLVIGHAL	TGSSDVQDWWGGLGDRAFD
<i>Zygosaccharomyces parabolii</i>	ref AGZ18953.1	CGEILHNFPYAYKTI	GRNDEAKNVLVIGHAL	TGSSDVQDWWGGLGDRAFD
<i>Zygosaccharomyces bailii</i>	emb SJM88098.1	CGEILHNFPYAYKTI	GRNDEAKNVLVIGHAL	TGSSDVQDWWGGLGDRAFD
<i>Kluyveromyces marxianus</i>	ref KAG0681669.1	CGEILHNFPYAYKTI	GRNDEAKNVLVIGHAL	TGSSDVQDWWGGLGDRAFD
<i>Kluyveromyces lactis</i>	ref QEU60244.1	CGEILHNFPYAYKTI	GRNDEAKNVLVIGHAL	TGSSDVQDWWGGLGDRAFD
<i>Terfezia boudieri</i>	ref RFB22791.1	CGEILHNFPYAYKTI	GRNDEAKNVLVIGHAL	TGSSDVQDWWGGLGDRAFD
<i>Trimausa ulvea</i>	ref KAF8420454.1	CGEILHNFPYAYKTI	GRNDEAKNVLVIGHAL	TGSSDVQDWWGGLGDRAFD
<i>Kalaharihuber piefilii</i>	ref KAF8471959.1	CGEILHNFPYAYKTI	GRNDEAKNVLVIGHAL	TGSSDVQDWWGGLGDRAFD
<i>Terfezia clavervii</i>	ref KAF8455951.1	CGEILHNFPYAYKTI	GRNDEAKNVLVIGHAL	TGSSDVQDWWGGLGDRAFD
<i>Nannozyma castellii</i>	ref XP_003673005.1	CGEILHNFPYAYKTI	GRNDEAKNVLVIGHAL	TGSSDVQDWWGGLGDRAFD
<i>Pachysolen tanophyllus</i>	ref XP_020074237.1	CGEILHNFPYAYKTI	GRNDEAKNVLVIGHAL	TGSSDVQDWWGGLGDRAFD
<i>Wickerhamomyces ciferrii</i>	ref XP_011272307.1	CGEILHNFPYAYKTI	GRNDEAKNVLVIGHAL	TGSSDVQDWWGGLGDRAFD
<i>Lachancea dasiensis</i>	emb SCU96634.1	CGEILHNFPYAYKTI	GRNDEAKNVLVIGHAL	TGSSDVQDWWGGLGDRAFD
<i>Lipomyces starkeyi</i>	ref ODQ74338.1	CGEILHNFPYAYKTI	GRNDEAKNVLVIGHAL	TGSSDVQDWWGGLGDRAFD
<i>Saitoella complicata</i>	ref GAG051702.1	CGEILHNFPYAYKTI	GRNDEAKNVLVIGHAL	TGSSDVQDWWGGLGDRAFD
<i>Torulopsis globosa</i>	ref XP_037137900.1	CGEILHNFPYAYKTI	GRNDEAKNVLVIGHAL	TGSSDVQDWWGGLGDRAFD
<i>Ascoidea rubescens</i>	ref XP_020048617.1	CGEILHNFPYAYKTI	GRNDEAKNVLVIGHAL	TGSSDVQDWWGGLGDRAFD
<i>Ogataea philodendri</i>	ref XP_046063080.1	CGEILHNFPYAYKTI	GRNDEAKNVLVIGHAL	TGSSDVQDWWGGLGDRAFD
<i>Lachancea nollifagi</i>	emb SCV03058.1	CGEILHNFPYAYKTI	GRNDEAKNVLVIGHAL	TGSSDVQDWWGGLGDRAFD
<i>Eremothecium gossypii</i>	ref NP_986230.1	CGEILHNFPYAYKTI	GRNDEAKNVLVIGHAL	TGSSDVQDWWGGLGDRAFD
<i>Trichomonascus ciferrii</i>	ref KAA8897105.1	CGEILHNFPYAYKTI	GRNDEAKNVLVIGHAL	TGSSDVQDWWGGLGDRAFD
<i>Autographum hederace</i>	ref KAF1990932.1	CGEILHNFPYAYKTI	GRNDEAKNVLVIGHAL	TGSSDVQDWWGGLGDRAFD
<i>Lachancea lanzarotensis</i>	ref XP_022630543.1	CGEILHNFPYAYKTI	GRNDEAKNVLVIGHAL	TGSSDVQDWWGGLGDRAFD
<i>Cyberlindnera fabianii</i>	emb CDR47813.1	CGEILHNFPYAYKTI	GRNDEAKNVLVIGHAL	TGSSDVQDWWGGLGDRAFD
<i>Wickerhamiella sorbophila</i>	ref XP_024662504.1	CGEILHNFPYAYKTI	GRNDEAKNVLVIGHAL	TGSSDVQDWWGGLGDRAFD
<i>Lophiostoma macrostromum</i>	ref KAF2652156.1	CGEILHNFPYAYKTI	GRNDEAKNVLVIGHAL	TGSSDVQDWWGGLGDRAFD
<i>Sphaeroporella brunnea</i>	ref KAA8892634.1	CGEILHNFPYAYKTI	GRNDEAKNVLVIGHAL	TGSSDVQDWWGGLGDRAFD
<i>Ramularia collo-cygni</i>	ref XP_023631861.1	CGEILHNFPYAYKTI	GRNDEAKNVLVIGHAL	TGSSDVQDWWGGLGDRAFD
<i>Eremomyces bilateralis</i>	ref XP_033534262.1	CGEILHNFPYAYKTI	GRNDEAKNVLVIGHAL	TGSSDVQDWWGGLGDRAFD
<i>Coleophoma crateriformis</i>	ref RDW64025.1	CGEILHNFPYAYKTI	GRNDEAKNVLVIGHAL	TGSSDVQDWWGGLGDRAFD
<i>Penicillium rolfii</i>	ref KAF3396381.1	CGEILHNFPYAYKTI	GRNDEAKNVLVIGHAL	TGSSDVQDWWGGLGDRAFD
<i>Amorphotheca resinacea</i>	ref XP_024718197.1	CGEILHNFPYAYKTI	GRNDEAKNVLVIGHAL	TGSSDVQDWWGGLGDRAFD
<i>Chalara longipes</i>	ref KAE3970763.1	CGEILHNFPYAYKTI	GRNDEAKNVLVIGHAL	TGSSDVQDWWGGLGDRAFD
<i>Aspergillus terreus</i>	ref KAG2412800.1	CGEILHNFPYAYKTI	GRNDEAKNVLVIGHAL	TGSSDVQDWWGGLGDRAFD
<i>Aspergillus nidulans</i>	ref XP_026603423.1	CGEILHNFPYAYKTI	GRNDEAKNVLVIGHAL	TGSSDVQDWWGGLGDRAFD
<i>Hyaloscypha variabilis</i>	ref PMD46603.1	CGEILHNFPYAYKTI	GRNDEAKNVLVIGHAL	TGSSDVQDWWGGLGDRAFD
<i>Talaromyces marneffii</i>	ref XP_002145444.1	CGEILHNFPYAYKTI	GRNDEAKNVLVIGHAL	TGSSDVQDWWGGLGDRAFD
<i>Aspergillus phoenicis</i>	ref RDK39989.1	CGEILHNFPYAYKTI	GRNDEAKNVLVIGHAL	TGSSDVQDWWGGLGDRAFD
<i>Aspergillus niger</i>	ref XP_001398292.1	CGEILHNFPYAYKTI	GRNDEAKNVLVIGHAL	TGSSDVQDWWGGLGDRAFD
<i>Trichodeltschia bisporula</i>	ref KAF2400853.1	CGEILHNFPYAYKTI	GRNDEAKNVLVIGHAL	TGSSDVQDWWGGLGDRAFD

		90	100	110	120	130	140
<i>Candida albicans</i>	ref XP_718283.1	PSRYLLICNSG	SPSYGSCSPVTIDKSS..TGKFP	GSFPLVFRDDVGTQRLIDSLNVR			
<i>Candida dubliniensis</i>	ref XP_002421791.1	PSRFLICNSG	SPSYGSCSPVTIDKSS..TGKFP	GSFPLVFRDDVGTQRLIDSLNVR			
<i>Candida tropicalis</i>	ref XP_002546119.1	PTKYFIICNSG	SPSYGSCSPVTIDKSS..TGKFP	GSFPLVFRDDVGTQRLIDSLNVR			
<i>Candida orthopositiva</i>	ref XP_003865973.1	PSRFFVICNSG	SPSYGSCSPVTIDKSS..TGKFP	GSFPLVFRDDVGTQRLIDSLNVR			
<i>Candida parapsilosis</i>	ref XP_036664758.1	PSRFFVICNSG	SPSYGSCSPVTIDKSS..TGKFP	GSFPLVFRDDVGTQRLIDSLNVR			
<i>Candida maltosa</i>	ref EMG48875.1	FEVSFIICNSG	SPSYGSCSPVSNKK..TGKFP	GSFPLVFRDDVGTQRLIDSLNVR			
<i>Subomyces tanzawaensis</i>	ref XP_020067300.1	PSRFFVICNSG	SPSYGSCSPVTIDPA..TGKFP	GSFPLVFRDDVGTQRLIDSLNVR			
<i>Candida metapsilosis</i>	ref KAG5420916.1	PSRFFVICNSG	SPSYGSCSPVTIDKSS..TGKFP	GSFPLVFRDDVGTQRLIDSLNVR			
<i>Candida subkharii</i>	ref KAG7662799.1	PSRFFVICNSG	SPSYGSCSPVTIDKSS..TGKFP	GSFPLVFRDDVGTQRLIDSLNVR			
<i>Scheffersomyces stipitis</i>	ref XP_001383339.1	PSRYFIICNSG	SPSYGSCSPVSDKSS..TGKFP	GSFPLVFRDDVGTQRLIDSLNVR			
<i>Yamadzomya tenuis</i>	ref XP_006685252.1	PSRFFVICNSG	SPSYGSCSPVSDKSS..TGKFP	GSFPLVFRDDVGTQRLIDSLNVR			
<i>Spathaspora passalidarum</i>	ref XP_007374001.1	PSRFFVICNSG	SPSYGSCSPVSDKSS..TGKFP	GSFPLVFRDDVGTQRLIDSLNVR			
<i>Dutrinia rugosa</i>	ref XP_034010932.1	PSRFFVICNSG	SPSYGSCSPVSDKSS..TGKFP	GSFPLVFRDDVGTQRLIDSLNVR			
<i>Millerozyma farinosa</i>	emb CCB85520.1	PSRFFVICNSG	SPSYGSCSPVSDKSS..TGKFP	GSFPLVFRDDVGTQRLIDSLNVR			
<i>Debaromyces fabryi</i>	ref XP_015466149.1	PSRFFVICNSG	SPSYGSCSPVSDKSS..TGKFP	GSFPLVFRDDVGTQRLIDSLNVR			
<i>Debaromyces hansenii</i>	ref XP_460331.1	PSRFFVICNSG	SPSYGSCSPVSDKSS..TGKFP	GSFPLVFRDDVGTQRLIDSLNVR			
<i>Candida viswanathii</i>	ref RCK53094.1	PSRYFIICNSG	SPSYGSCSPVSDKSS..TGKFP	GSFPLVFRDDVGTQRLIDSLNVR			
<i>Hypophybia burtonii</i>	ref XP_020074237.1	PSRFFVICNSG	SPSYGSCSPVSDKSS..TGKFP	GSFPLVFRDDVGTQRLIDSLNVR			
<i>Candida auris</i>	ref P1551135.1	PSRFFVICNSG	SPSYGSCSPVSDKSS..TGKFP	GSFPLVFRDDVGTQRLIDSLNVR			
<i>Clavispora lusitanae</i>	ref KAF5210728.1	PSRFFVICNSG	SPSYGSCSPVSDKSS..TGKFP	GSFPLVFRDDVGTQRLIDSLNVR			
<i>Scheffersomyces spartane</i>	ref XP_043049351.1	PSRFFVICNSG	SPSYGSCSPVSDKSS..TGKFP	GSFPLVFRDDVGTQRLIDSLNVR			
<i>Zygosaccharomyces parabolii</i>	ref AQZ18953.1	PSRFLVICNSG	SPSYGSCSPVSDKSS..TGKFP	GSFPLVFRDDVGTQRLIDSLNVR			
<i>Zygosaccharomyces bailii</i>	emb SJM88098.1	PSRFLVICNSG	SPSYGSCSPVSDKSS..TGKFP	GSFPLVFRDDVGTQRLIDSLNVR			
<i>Kluyveromyces marxianus</i>	ref KAG681669.1	PSKFFVICNSG	SPSYGSCSPVSDKSS..TGKFP	GSFPLVFRDDVGTQRLIDSLNVR			
<i>Kluyveromyces lactis</i>	ref QEU60244.1	PSKFFVICNSG	SPSYGSCSPVSDKSS..TGKFP	GSFPLVFRDDVGTQRLIDSLNVR			
<i>Terfezia boudieri</i>	ref RPB22791.1	TKRYFVICNSG	SPSYGSCSPVSDKSS..TGKFP	GSFPLVFRDDVGTQRLIDSLNVR			
<i>Trimonis nivea</i>	ref KAF8420454.1	TKRYFVICNSG	SPSYGSCSPVSDKSS..TGKFP	GSFPLVFRDDVGTQRLIDSLNVR			
<i>Kalahariutuber pfeilii</i>	ref KAF8471959.1	TKRYFVICNSG	SPSYGSCSPVSDKSS..TGKFP	GSFPLVFRDDVGTQRLIDSLNVR			
<i>Terfezia clavayii</i>	ref KAF8455951.1	TKRYFVICNSG	SPSYGSCSPVSDKSS..TGKFP	GSFPLVFRDDVGTQRLIDSLNVR			
<i>Naumovozyma castellii</i>	ref XP_003673005.1	PSRFFVICNSG	SPSYGSCSPVSDKSS..TGKFP	GSFPLVFRDDVGTQRLIDSLNVR			
<i>Pachysolen tannophilus</i>	ref ODV95269.1	PSRFFVICNSG	SPSYGSCSPVSDKSS..TGKFP	GSFPLVFRDDVGTQRLIDSLNVR			
<i>Wickerhamomyces ciferrii</i>	ref XP_011272307.1	PSRFFVICNSG	SPSYGSCSPVSDKSS..TGKFP	GSFPLVFRDDVGTQRLIDSLNVR			
<i>Lachancea dasiensis</i>	emb SCU96634.1	TSRFLVICNSG	SPSYGSCSPVSDKSS..TGKFP	GSFPLVFRDDVGTQRLIDSLNVR			
<i>Lipomyces starkeyi</i>	ref ODQ74338.1	TSRFFVICNSG	SPSYGSCSPVSDKSS..TGKFP	GSFPLVFRDDVGTQRLIDSLNVR			
<i>Saitoella complicata</i>	ref GAO51702.1	TSRFFVICNSG	SPSYGSCSPVSDKSS..TGKFP	GSFPLVFRDDVGTQRLIDSLNVR			
<i>Torulopsis globosa</i>	ref XP_037137900.1	PTKFFVICNSG	SPSYGSCSPVSDKSS..TGKFP	GSFPLVFRDDVGTQRLIDSLNVR			
<i>Ascoidea rubescens</i>	ref XP_020044617.1	PTKFFVICNSG	SPSYGSCSPVSDKSS..TGKFP	GSFPLVFRDDVGTQRLIDSLNVR			
<i>Ogataea philloendri</i>	ref XP_046063080.1	TSRFLVICNSG	SPSYGSCSPVSDKSS..TGKFP	GSFPLVFRDDVGTQRLIDSLNVR			
<i>Lachancea nothofagi</i>	emb SCV03058.1	TSRFLVICNSG	SPSYGSCSPVSDKSS..TGKFP	GSFPLVFRDDVGTQRLIDSLNVR			
<i>Eremothecium gossypii</i>	ref NP_96230.1	TSRFFVICNSG	SPSYGSCSPVSDKSS..TGKFP	GSFPLVFRDDVGTQRLIDSLNVR			
<i>Trichomonascus ciferrii</i>	ref KAA8897105.1	PTKFFVICNSG	SPSYGSCSPVSDKSS..TGKFP	GSFPLVFRDDVGTQRLIDSLNVR			
<i>Antographum hederac</i>	ref KAF1990932.1	TSRFLVICNSG	SPSYGSCSPVSDKSS..TGKFP	GSFPLVFRDDVGTQRLIDSLNVR			
<i>Lachancea lanzarotensis</i>	ref XP_022630543.1	TSRFLVICNSG	SPSYGSCSPVSDKSS..TGKFP	GSFPLVFRDDVGTQRLIDSLNVR			
<i>Cyberlindnera fabianii</i>	emb CDB47813.1	TSRFFVICNSG	SPSYGSCSPVSDKSS..TGKFP	GSFPLVFRDDVGTQRLIDSLNVR			
<i>Wickerhamella sorbophila</i>	ref XP_024662504.1	TSRFFVICNSG	SPSYGSCSPVSDKSS..TGKFP	GSFPLVFRDDVGTQRLIDSLNVR			
<i>Lophostoma macrostromum</i>	ref KAF2652156.1	TSRFFVICNSG	SPSYGSCSPVSDKSS..TGKFP	GSFPLVFRDDVGTQRLIDSLNVR			
<i>Sphaerospora brunnea</i>	ref KAA892634.1	TSRFFVICNSG	SPSYGSCSPVSDKSS..TGKFP	GSFPLVFRDDVGTQRLIDSLNVR			
<i>Romularia collo-cygni</i>	ref XP_023631861.1	TSRFFVICNSG	SPSYGSCSPVSDKSS..TGKFP	GSFPLVFRDDVGTQRLIDSLNVR			
<i>Eremomyces bilateralis</i>	ref XP_033534262.1	TSRFFVICNSG	SPSYGSCSPVSDKSS..TGKFP	GSFPLVFRDDVGTQRLIDSLNVR			
<i>Coleophoma crateriformis</i>	ref RDW64025.1	TSRFFVICNSG	SPSYGSCSPVSDKSS..TGKFP	GSFPLVFRDDVGTQRLIDSLNVR			
<i>Penicillium rolfii</i>	ref KAF3396381.1	TSRFFVICNSG	SPSYGSCSPVSDKSS..TGKFP	GSFPLVFRDDVGTQRLIDSLNVR			
<i>Amorophthea resinac</i>	ref XP_024718197.1	TSRFFVICNSG	SPSYGSCSPVSDKSS..TGKFP	GSFPLVFRDDVGTQRLIDSLNVR			
<i>Chalara longipes</i>	ref KAE370763.1	TSRFFVICNSG	SPSYGSCSPVSDKSS..TGKFP	GSFPLVFRDDVGTQRLIDSLNVR			
<i>Aspergillus terreus</i>	ref KAG2412800.1	TSRFFVICNSG	SPSYGSCSPVSDKSS..TGKFP	GSFPLVFRDDVGTQRLIDSLNVR			
<i>Aspergillus nidulans</i>	ref XP_026603423.1	TSRFFVICNSG	SPSYGSCSPVSDKSS..TGKFP	GSFPLVFRDDVGTQRLIDSLNVR			
<i>Hyaloscypha variabilis</i>	ref PMD46603.1	TSRFFVICNSG	SPSYGSCSPVSDKSS..TGKFP	GSFPLVFRDDVGTQRLIDSLNVR			
<i>Talaromyces marneffei</i>	ref XP_002145444.1	TSRFFVICNSG	SPSYGSCSPVSDKSS..TGKFP	GSFPLVFRDDVGTQRLIDSLNVR			
<i>Aspergillus phoenicis</i>	ref RDK3999.1	TSRFFVICNSG	SPSYGSCSPVSDKSS..TGKFP	GSFPLVFRDDVGTQRLIDSLNVR			
<i>Aspergillus niger</i>	ref XP_001398292.1	TSRFFVICNSG	SPSYGSCSPVSDKSS..TGKFP	GSFPLVFRDDVGTQRLIDSLNVR			
<i>Trichodelia bisporula</i>	ref KAF2400853.1	TSRFFVICNSG	SPSYGSCSPVSDKSS..TGKFP	GSFPLVFRDDVGTQRLIDSLNVR			

		150	160	170	180	190	200
<i>Candida albicans</i>	ref XP_718283.1	RIAAVVGSGMGGHIAL	YSATINNTGTVQKVVAA	DATAARTSANGISWNE	OROCIFSDOFF		
<i>Candida dubliniensis</i>	ref XP_002421791.1	RIAAVVGSGMGGHIAL	YSATINNTGTVQKVVAA	DATAARTSANGISWNE	OROCIFSDOFF		
<i>Candida tropicalis</i>	ref XP_002546119.1	SLAAVVGSGMGGHIAL	YSATINNTGTVQKVVAA	DATAARTSANGISWNE	OROCIFSDOFF		
<i>Candida orthopositiva</i>	ref XP_003865973.1	QIAAVVGSGMGGHIAL	YSATINNTGTVQKVVAA	DATAARTSANGISWNE	OROCIFSDOFF		
<i>Candida parapsilosis</i>	ref XP_036664758.1	RIACVVGSGMGGHIAL	YSATINNTGTVQKVVAA	DATAARTSANGISWNE	OROCIFSDOFF		
<i>Candida maltosa</i>	ref EMG48875.1	SVECVVGSGMGGHIAL	YSATINNTGTVQKVVAA	DATAARTSANGISWNE	OROCIFSDOFF		
<i>Subomyces tanzawaensis</i>	ref XP_020067300.1	SIACVVGSGMGGHIAL	YSATINNTGTVQKVVAA	DATAARTSANGISWNE	OROCIFSDOFF		
<i>Candida metapsilosis</i>	ref KAG5420916.1	QIACVVGSGMGGHIAL	YSATINNTGTVQKVVAA	DATAARTSANGISWNE	OROCIFSDOFF		
<i>Candida subkharii</i>	ref KAG7662799.1	GIACVVGSGMGGHIAL	YSATINNTGTVQKVVAA	DATAARTSANGISWNE	OROCIFSDOFF		
<i>Scheffersomyces stipitis</i>	ref XP_001383339.1	SIACVVGSGMGGHIAL	YSATINNTGTVQKVVAA	DATAARTSANGISWNE	OROCIFSDOFF		
<i>Yamadzomya tenuis</i>	ref XP_006685252.1	SIACVVGSGMGGHIAL	YSATINNTGTVQKVVAA	DATAARTSANGISWNE	OROCIFSDOFF		
<i>Spathaspora passalidarum</i>	ref XP_007374001.1	GIACVVGSGMGGHIAL	YSATINNTGTVQKVVAA	DATAARTSANGISWNE	OROCIFSDOFF		
<i>Dutrinia rugosa</i>	ref XP_034010932.1	KIAAVVGSGMGGHIAL	YSATINNTGTVQKVVAA	DATAARTSANGISWNE	OROCIFSDOFF		
<i>Millerozyma farinosa</i>	emb CCB85520.1	GIACVVGSGMGGHIAL	YSATINNTGTVQKVVAA	DATAARTSANGISWNE	OROCIFSDOFF		
<i>Debaromyces fabryi</i>	ref XP_015466149.1	GIACVVGSGMGGHIAL	YSATINNTGTVQKVVAA	DATAARTSANGISWNE	OROCIFSDOFF		
<i>Debaromyces hansenii</i>	ref XP_460331.1	GIACVVGSGMGGHIAL	YSATINNTGTVQKVVAA	DATAARTSANGISWNE	OROCIFSDOFF		
<i>Candida viswanathii</i>	ref RCK53094.1	LLAAVVGSGMGGHIAL	YSATINNTGTVQKVVAA	DATAARTSANGISWNE	OROCIFSDOFF		
<i>Hypophybia burtonii</i>	ref XP_020074237.1	SLAAVVGSGMGGHIAL	YSATINNTGTVQKVVAA	DATAARTSANGISWNE	OROCIFSDOFF		
<i>Candida auris</i>	ref P1551135.1	KIACVVGSGMGGHIAL	YSATINNTGTVQKVVAA	DATAARTSANGISWNE	OROCIFSDOFF		
<i>Clavispora lusitanae</i>	ref KAF5210728.1	SIACVVGSGMGGHIAL	YSATINNTGTVQKVVAA	DATAARTSANGISWNE	OROCIFSDOFF		
<i>Scheffersomyces spartane</i>	ref XP_043049351.1	SIACVVGSGMGGHIAL	YSATINNTGTVQKVVAA	DATAARTSANGISWNE	OROCIFSDOFF		
<i>Zygosaccharomyces parabolii</i>	ref AQZ18953.1	GVACVVGSGMGGHIAL	YSATINNTGTVQKVVAA	DATAARTSANGISWNE	OROCIFSDOFF		
<i>Zygosaccharomyces bailii</i>	emb SJM88098.1	GVACVVGSGMGGHIAL	YSATINNTGTVQKVVAA	DATAARTSANGISWNE	OROCIFSDOFF		
<i>Kluyveromyces marxianus</i>	ref KAG681669.1	SIACVVGSGMGGHIAL	YSATINNTGTVQKVVAA	DATAARTSANGISWNE	OROCIFSDOFF		
<i>Kluyveromyces lactis</i>	ref QEU60244.1	QVAAVVGSGMGGHIAL	YSATINNTGTVQKVVAA	DATAARTSANGISWNE	OROCIFSDOFF		
<i>Terfezia boudieri</i>	ref RPB22791.1	QVAAVVGSGMGGHIAL	YSATINNTGTVQKVVAA	DATAARTSANGISWNE	OROCIFSDOFF		
<i>Trimonis nivea</i>	ref KAF8420454.1	QVAAVVGSGMGGHIAL	YSATINNTGTVQKVVAA	DATAARTSANGISWNE	OROCIFSDOFF		
<i>Kalahariutuber pfeilii</i>	ref KAF8471959.1	QVAAVVGSGMGGHIAL	YSATINNTGTVQKVVAA	DATAARTSANGISWNE	OROCIFSDOFF		
<i>Terfezia clavayii</i>	ref KAF8455951.1	QVAAVVGSGMGGHIAL	YSATINNTGTVQKVVAA	DATAARTSANGISWNE	OROCIFSDOFF		
<i>Naumovozyma castellii</i>	ref XP_003673005.1	SIACVVGSGMGGHIAL	YSATINNTGTVQKVVAA	DATAARTSANGISWNE	OROCIFSDOFF		
<i>Pachysolen tannophilus</i>	ref ODV95269.1	QIACVVGSGMGGHIAL	YSATINNTGTVQKVVAA	DATAARTSANGISWNE	OROCIFSDOFF		
<i>Wickerhamomyces ciferrii</i>	ref XP_011272307.1	QIACVVGSGMGGHIAL	YSATINNTGTVQKVVAA	DATAARTSANGISWNE	OROCIFSDOFF		
<i>Lachancea dasiensis</i>	emb SCU96634.1	QVAAVVGSGMGGHIAL	YSATINNTGTVQKVVAA	DATAARTSANGISWNE	OROCIFSDOFF		
<i>Lipomyces starkeyi</i>	ref ODQ74338.1	QVAAVVGSGMGGHIAL	YSATINNTGTVQKVVAA	DATAARTSANGISWNE	OROCIFSDOFF		
<i>Saitoella complicata</i>	ref GAO51702.1	QVAAVVGSGMGGHIAL	YSATINNTGTVQKVVAA	DATAARTSANGISWNE	OROCIFSDOFF		
<i>Torulopsis globosa</i>	ref XP_037137900.1	SIACVVGSGMGGHIAL	YSATINNTGTVQKVVAA	DATAARTSANGISWNE	OROCIFSDOFF		
<i>Ascoidea rubescens</i>	ref XP_020044617.1	QVAAVVGSGMGGHIAL	YSATINNTGTVQKVVAA	DATAARTSANGISWNE	OROCIFSDOFF		
<i>Ogataea philloendri</i>	ref XP_046063080.1	QIACVVGSGMGGHIAL	YSATINNTGTVQKVVAA	DATAARTSANGISWNE	OROCIFSDOFF		
<i>Lachancea nothofagi</i>	emb SCV03058.1	SVACVVGSGMGGHIAL	YSATINNTGTVQKVVAA	DATAARTSANGISWNE	OROCIFSDOFF		
<i>Eremothecium gossypii</i>	ref NP_96230.1	QVAAVVGSGMGGHIAL	YSATINNTGTVQKVVAA	DATAARTSANGISWNE	OROCIFSDOFF		
<i>Trichomonascus ciferrii</i>	ref KAA8897105.1	QIACVVGSGMGGHIAL	YSATINNTGTVQKVVAA	DATAARTSANGISWNE	OROCIFSDOFF		
<i>Antographum hederac</i>	ref KAF1990932.1	QIACVVGSGMGGHIAL	YSATINNTGTVQKVVAA	DATAARTSANGISWNE	OROCIFSDOFF		
<i>Lachancea lanzarotensis</i>	ref XP_022630543.1	SVACVVGSGMGGHIAL	YSATINNTGTVQKVVAA	DATAARTSANGISWNE	OROCIFSDOFF		
<i>Cyberlindnera fabianii</i>	emb CDB47813.1	QVAAVVGSGMGGHIAL	YSATINNTGTVQKVVAA	DATAARTSANGISWNE	OROCIFSDOFF		
<i>Wickerhamella sorbophila</i>	ref XP_024662504.1	QIACVVGSGMGGHIAL	YSATINNTGTVQKVVAA	DATAARTSANGISWNE	OROCIFSDOFF		
<i>Lophostoma macrostromum</i>	ref KAF2652156.1	QIACVVGSGMGGHIAL	YSATINNTGTVQKVVAA	DATAARTSANGISWNE	OROCIFSDOFF		
<i>Sphaerospora brunnea</i>	ref KAA892634.1	QVAAVVGSGMGGHIAL	YSATINNTGTVQKVVAA	DATAARTSANGISWNE	OROCIFSDOFF		
<i>Romularia collo-cygni</i>	ref XP_023631861.1	QVAAVVGSGMGGHIAL	YSATINNTGTVQKVVAA	DATAARTSANGISWNE	OROCIFSDOFF		
<i>Eremomyces bilateralis</i>	ref XP_033534262.1	QIACVVGSGMGGHIAL	YSATINNTGTVQKVVAA	DATAARTSANGISWNE	OROCIFSDOFF		
<i>Coleophoma crateriformis</i>	ref RDW64025.1	QVAAVVGSGMGGHIAL	YSATINNTGTVQKVVAA	DATAARTSANGISWNE	OROCIFSDOFF		
<i>Penicillium rolfii</i>	ref KAF3396381.1	QIACVVGSGMGGHIAL	YSATINNTGTVQKVVAA	DATAARTSANGISWNE	OROCIFSDOFF		
<i>Amorophthea resinac</i>	ref XP_024718197.1	QVAAVVGSGMGGHIAL	YSATINNTGTVQKVVAA	DATAARTSANGISWNE	OROCIFSDOFF		
<i>Chalara longipes</i>	ref KAE370763.1	QVAAVVGSGMGGHIAL	YSATINNTGTVQKVVAA	DATAARTSANGISWNE	OROCIFSDOFF		
<i>Aspergillus terreus</i>	ref KAG2412800.1	QIACVVGSGMGGHIAL	YSATINNTGTVQKVVAA	DATAARTSANGISWNE	OROCIFSDOFF		
<i>Aspergillus nidulans</i>	ref XP_026603423.1	QIACVVGSGMGGHIAL	YSATINNTGTVQKVVAA	DATAARTSANGISWNE	OROCIFSDOFF		
<i>Hyaloscypha variabilis</i>	ref PMD46603.1	QVAAVVGSGMGGHIAL	YSATINNTGTVQKVVAA	DATAARTSANGISWNE	OROCIFSDOFF		
<i>Talaromyces marneffei</i>	ref XP_002145444.1	QIACVVGSGMGGHIAL	YSATINNTGTVQKVVAA	DATAARTSANGISWNE	OROCIFSDOFF		
<i>Aspergillus phoenicis</i>	ref RDK3999.1	QIACVVGSGMGGHIAL	YSATINNTGTVQKVVAA	DATAARTSANGISWNE	OROCIFSDOFF		
<i>Aspergillus niger</i>	ref XP_001398292.1	QIACVVGSGMGGHIAL	YSATINNTGTVQKVVAA	DATAARTSANGISWNE	OROCIFSDOFF		
<i>Trichodelia bisporula</i>	ref KAF2400853.1	SIACVVGSGMGGHIAL	YSATINNTGTVQKVVAA	DATAARTSANGISWNE	OROCIFSDOFF		

210 220 230 240 250

Candida albicans ref |XP_718283.1| YDGGVYET..GNKDDSGLSAARMAAALLTYRSRNSFESFGRKLGRSP.....NDG
Candida dubliniensis ref |XP_002421791.1| YDGGVYET..GNKDDSGLSAARMAAALLTYRSRNSFESFGRKLGRSP.....SDG
Candida tropicalis ref |XP_002546119.1| YDGGVYET..GNKDDSGLSAARMAAALLTYRSRNSFESFGRKLGRSP.....SSA
Candida orthoplosis ref |XP_003865973.1| YDGGVYENLGLKDDSGLSAARMAAALLTYRSRNSFESFGRKLGRSP.....KLS
Candida parapsilosis ref |XP_036664758.1| YDGGVYENKLGKDDSGLSAARMAAALLTYRSRNSFESFGRKLGRSP.....SLN
Candida maltosa gb |EMG48875.1| FEDGGVYQI..SNKDDGGLSARMAAALLTYRSRNSFESFGRKLGRSP.....DD.
Subomyces tanzavaensis ref |XP_020067300.1| YDGGVYET..NNKDDSGLSAARMAAALLTYRSRNSFESFGRKLGRSP.....PKTQ
Candida metapsilosis gb |KAG5420916.1| YDGGVYENKLGKDDSGLSAARMAAALLTYRSRNSFESFGRKLGRSP.....KLS
Candida subhashii gb |KAG7662799.1| YDGGVYEN..TIKDDGGLSARMAAALLTYRSRNSFESFGRKLGRSP.....LQKS.SSINSLSPE
Scheffersomyces stipitis ref |XP_001383339.1| YDGGVYEN.NGKDDSGLSAARMAAALLTYRSRNSFESFGRKLGRSP.....NKIGSE
Yamadazyma tenuis ref |XP_006685252.1| YDGGVYENSPNGVDDSGLSAARMAAALLTYRSRNSFESFGRKLGRSP.....GVKN
Spathaspora passalidarum ref |XP_007374001.1| YDGGVYENSGVDDSGLSAARMAAALLTYRSRNSFESFGRKLGRSP.....KAAKPEFSNLSEE
Diutina rugosa gb |XP_034010932.1| YDGGVYEN.EGAKDDSGLSAARMAAALLTYRSRNSFESFGRKLGRSP.....NQQP.AGASTAVTAA
Millerozyma farinosa emb |CCB85520.1| YDGGVYEREDGAKDDSGLSAARMAAALLTYRSRNSFESFGRKLGRSP.....SKDQ
Debaromyces fabryi ref |XP_015466149.1| YDGGVYENKNGIKDDSGLSAARMAAALLTYRSRNSFESFGRKLGRSP.....SVKS.NTQNGISEE
Debaromyces hansenii ref |XP_460331.1| YDGGVYENKNGIKDDSGLSAARMAAALLTYRSRNSFESFGRKLGRSP.....SVKA.NIEPKEISEE
Candida viswanathii gb |RCG59094.1| YDGGVYEDF..DDPDDSGLSAARMAAALLTYRSRNSFESFGRKLGRSP.....KDE
Hyphopichia burtonii ref |XP_020074237.1| YDGGVYERSDNNVDDSGLSAARMAAALLTYRSRNSFESFGRKLGRSP.....NTDPKAYQKQ
Candida auris gb |PI551135.1| YDGGVYENPKGLRDPDGLSARMAAALLTYRSRNSFESFGRKLGRSP.....EDQ
Clavispora lusitanae gb |KAF5210728.1| YDGGVYETPN..LSPNGGLSARMAAALLTYRSRNSFESFGRKLGRSP.....Q
Scheffersomyces spartinae ref |XP_043049351.1| YDGGVYEN..GNSNGGLSARMAAALLTYRSRNSFESFGRKLGRSP.....SSSS
Zygosaccharomyces parabailli gb |AQ218953.1| YDGGVYSLN...DPPDGLSARMAAALLTYRSRNSFESFGRKLGRSP.....KKNFARIPSAEHSNKVARP...
Zygosaccharomyces bailii emb |JSM88098.1| YDGGVYSLN...DPPDGLSARMAAALLTYRSRNSFESFGRKLGRSP.....KKNFARIPSAEHSNKVARP...
Kluyveromyces marxianus gb |KAG0681669.1| YDGGVYSLD...EPPDGLSARMAAALLTYRSRNSFESFGRKLGRSP.....SLQQQKSGRLDAQT
Kluyveromyces lactis gb |QBU50244.1| YDGGVYSLD...EPPDGLSARMAAALLTYRSRNSFESFGRKLGRSP.....SLQQQKSGR...
Terfezia boudieri gb |RPB2791.1| YDGGVYSLD...EPPDGLSARMAAALLTYRSRNSFESFGRKLGRSP.....SLQQQKSGR...
Trimitana nivea gb |KAF8420454.1| YDGGVYSLD...EPPDGLSARMAAALLTYRSRNSFESFGRKLGRSP.....SLQQQKSGR...
Kalaharutuber pfeilii gb |KAF8471959.1| YDGGVYSLD...EPPDGLSARMAAALLTYRSRNSFESFGRKLGRSP.....SLQQQKSGR...
Terfezia clavervii gb |KAF8455951.1| YDGGVYSLD...EPPDGLSARMAAALLTYRSRNSFESFGRKLGRSP.....SLQQQKSGR...
Nannozyma castellii ref |XP_003673005.1| YDGGVYSLD...EPPDGLSARMAAALLTYRSRNSFESFGRKLGRSP.....SLQQQKSGR...
Pachysolen tannophilus gb |ODV95269.1| YDGGVYSLD...EPPDGLSARMAAALLTYRSRNSFESFGRKLGRSP.....SLQQQKSGR...
Wickerhamomyces ciferrii ref |XP_011272307.1| YDGGVYDPK...DPPSGLSARMAAALLTYRSRNSFESFGRKLGRSP.....SIVQKN...
Lachancea danielsii emb |SCU96634.1| YDGGVYDQ...KQVVGGLSARMAAALLTYRSRNSFESFGRKLGRSP.....SVLHQHSRO...
Lipomyces starkei gb |ODQ74338.1| YDGGVYAFD...DPPSGLSARMAAALLTYRSRNSFESFGRKLGRSP.....ASHRIV...
Saitoella complicata gb |GAO51702.1| YDGGVYAFD...DPPSGLSARMAAALLTYRSRNSFESFGRKLGRSP.....SKOPYNAL...
Torulaspora globosa ref |XP_037137900.1| YDGGVYSLQ...DPPDGLSARMAAALLTYRSRNSFESFGRKLGRSP.....FARIPSAEHSNKVARP...
Ascoidea rubescens ref |XP_020048617.1| YDGGVYSLD...EPPDGLSARMAAALLTYRSRNSFESFGRKLGRSP.....SLQQQKSGR...
Ogataea philloendrii ref |XP_046063080.1| YDGGVYSLD...EPPDGLSARMAAALLTYRSRNSFESFGRKLGRSP.....SLQQQKSGR...
Lachancea nethofi emb |SCU3058.1| YDGGVYSLD...EPPDGLSARMAAALLTYRSRNSFESFGRKLGRSP.....SLQQQKSGR...
Eremothecium gossypii ref |NP_986230.1| YDGGVYSLD...EPPDGLSARMAAALLTYRSRNSFESFGRKLGRSP.....SLQQQKSGR...
Trichomonascus ciferrii gb |KAA8897105.1| YDGGVYSLD...EPPDGLSARMAAALLTYRSRNSFESFGRKLGRSP.....SLQQQKSGR...
Autographum hederace gb |KAF1990932.1| YDGGVYSLD...EPPDGLSARMAAALLTYRSRNSFESFGRKLGRSP.....SLQQQKSGR...
Lachancea lanzarotensis ref |XP_022630543.1| YDGGVYSLD...EPPDGLSARMAAALLTYRSRNSFESFGRKLGRSP.....SLQQQKSGR...
Cyberlindnera fabianii emb |COR47813.1| YDGGVYSLD...EPPDGLSARMAAALLTYRSRNSFESFGRKLGRSP.....SLQQQKSGR...
Wickerhamiella sorbophila ref |XP_024662504.1| YDGGVYSLD...EPPDGLSARMAAALLTYRSRNSFESFGRKLGRSP.....SLQQQKSGR...
Lophiostoma macrostomum gb |KAF2652156.1| YDGGVYSLD...EPPDGLSARMAAALLTYRSRNSFESFGRKLGRSP.....SLQQQKSGR...
Sphaerospora brunnea gb |KAA8892634.1| YDGGVYSLD...EPPDGLSARMAAALLTYRSRNSFESFGRKLGRSP.....SLQQQKSGR...
Romularia collo-cygni ref |XP_023631861.1| YDGGVYSLD...EPPDGLSARMAAALLTYRSRNSFESFGRKLGRSP.....SLQQQKSGR...
Eremomyces bilateralis ref |XP_033534262.1| YDGGVYSLD...EPPDGLSARMAAALLTYRSRNSFESFGRKLGRSP.....SLQQQKSGR...
Coleophoma crateriformis gb |RDW64025.1| YDGGVYSLD...EPPDGLSARMAAALLTYRSRNSFESFGRKLGRSP.....SLQQQKSGR...
Penicillium rolfsii gb |KAF3396381.1| YDGGVYSLD...EPPDGLSARMAAALLTYRSRNSFESFGRKLGRSP.....SLQQQKSGR...
Amorphotheca resinae ref |XP_024718197.1| YDGGVYSLD...EPPDGLSARMAAALLTYRSRNSFESFGRKLGRSP.....SLQQQKSGR...
Chalara longipes gb |KAF370763.1| YDGGVYSLD...EPPDGLSARMAAALLTYRSRNSFESFGRKLGRSP.....SLQQQKSGR...
Aspergillus terreus gb |KAG2412800.1| YDGGVYSLD...EPPDGLSARMAAALLTYRSRNSFESFGRKLGRSP.....SLQQQKSGR...
Aspergillus mulundensis ref |XP_026603423.1| YDGGVYSLD...EPPDGLSARMAAALLTYRSRNSFESFGRKLGRSP.....SLQQQKSGR...
Hyaloscypha variabilis gb |PMD46603.1| YDGGVYSLD...EPPDGLSARMAAALLTYRSRNSFESFGRKLGRSP.....SLQQQKSGR...
Talaromyces marneffei ref |XP_002145444.1| YDGGVYSLD...EPPDGLSARMAAALLTYRSRNSFESFGRKLGRSP.....SLQQQKSGR...
Aspergillus phoenicis gb |RDK39989.1| YDGGVYSLD...EPPDGLSARMAAALLTYRSRNSFESFGRKLGRSP.....SLQQQKSGR...
Aspergillus niger ref |XP_001398292.1| YDGGVYSLD...EPPDGLSARMAAALLTYRSRNSFESFGRKLGRSP.....SLQQQKSGR...
Trichodelia bispurula gb |KAF2400853.1| YDGGVYSLD...EPPDGLSARMAAALLTYRSRNSFESFGRKLGRSP.....SLQQQKSGR...

260 270

Candida albicans ref |XP_718283.1| GASP.....RTKH.EEH.....SLLNQGSKL.....IN
Candida dubliniensis ref |XP_002421791.1| SASP.....RTKH.EEH.....SLLNQGSKL.....VN
Candida tropicalis ref |XP_002546119.1| SLSPENSRSRSPRSQ.EEH.....SLLNQGSKL.....VK
Candida orthoplosis ref |XP_003865973.1| NK.DDSV.DETGKVPKTKD.EEH.....SLLNQGSKL.....KLS
Candida parapsilosis ref |XP_036664758.1| SKGDDEI.DESGKVPKTKD.EEH.....SLLNQGSKL.....LQKS.SSINSLSPE
Candida maltosa gb |EMG48875.1| ..TEES.VKEAVRYPKTKD.EEN.....SLLNQGSKL.....DD.
Subomyces tanzavaensis ref |XP_020067300.1| ..TEES.VKEAVRYPKTKD.EEN.....SLLNQGSKL.....PKTQ
Candida metapsilosis gb |KAG5420916.1| ..TEES.VKEAVRYPKTKD.EEN.....SLLNQGSKL.....KLS
Candida subhashii gb |KAG7662799.1| ..TEES.VKEAVRYPKTKD.EEN.....SLLNQGSKL.....LQKS.SSINSLSPE
Scheffersomyces stipitis ref |XP_001383339.1| ..TEES.VKEAVRYPKTKD.EEN.....SLLNQGSKL.....NKIGSE
Yamadazyma tenuis ref |XP_006685252.1| ..TEES.VKEAVRYPKTKD.EEN.....SLLNQGSKL.....GVKN
Spathaspora passalidarum ref |XP_007374001.1| ..TEES.VKEAVRYPKTKD.EEN.....SLLNQGSKL.....KAAKPEFSNLSEE
Diutina rugosa gb |XP_034010932.1| ..TEES.VKEAVRYPKTKD.EEN.....SLLNQGSKL.....NQQP.AGASTAVTAA
Millerozyma farinosa emb |CCB85520.1| ..TEES.VKEAVRYPKTKD.EEN.....SLLNQGSKL.....SKDQ
Debaromyces fabryi ref |XP_015466149.1| ..TEES.VKEAVRYPKTKD.EEN.....SLLNQGSKL.....SVKS.NTQNGISEE
Debaromyces hansenii ref |XP_460331.1| ..TEES.VKEAVRYPKTKD.EEN.....SLLNQGSKL.....SVKA.NIEPKEISEE
Candida viswanathii gb |RCG59094.1| ..TEES.VKEAVRYPKTKD.EEN.....SLLNQGSKL.....KDE
Hyphopichia burtonii ref |XP_020074237.1| ..TEES.VKEAVRYPKTKD.EEN.....SLLNQGSKL.....NTDPKAYQKQ
Candida auris gb |PI551135.1| ..TEES.VKEAVRYPKTKD.EEN.....SLLNQGSKL.....EDQ
Clavispora lusitanae gb |KAF5210728.1| ..TEES.VKEAVRYPKTKD.EEN.....SLLNQGSKL.....Q
Scheffersomyces spartinae ref |XP_043049351.1| ..TEES.VKEAVRYPKTKD.EEN.....SLLNQGSKL.....SSSS
Zygosaccharomyces parabailli gb |AQ218953.1| ..TEES.VKEAVRYPKTKD.EEN.....SLLNQGSKL.....KKNFARIPSAEHSNKVARP...
Zygosaccharomyces bailii emb |JSM88098.1| ..TEES.VKEAVRYPKTKD.EEN.....SLLNQGSKL.....KKNFARIPSAEHSNKVARP...
Kluyveromyces marxianus gb |KAG0681669.1| ..TEES.VKEAVRYPKTKD.EEN.....SLLNQGSKL.....SLQQQKSGRLDAQT
Kluyveromyces lactis gb |QBU50244.1| ..TEES.VKEAVRYPKTKD.EEN.....SLLNQGSKL.....SLQQQKSGR...
Terfezia boudieri gb |RPB2791.1| ..TEES.VKEAVRYPKTKD.EEN.....SLLNQGSKL.....SLQQQKSGR...
Trimitana nivea gb |KAF8420454.1| ..TEES.VKEAVRYPKTKD.EEN.....SLLNQGSKL.....SLQQQKSGR...
Kalaharutuber pfeilii gb |KAF8471959.1| ..TEES.VKEAVRYPKTKD.EEN.....SLLNQGSKL.....SLQQQKSGR...
Terfezia clavervii gb |KAF8455951.1| ..TEES.VKEAVRYPKTKD.EEN.....SLLNQGSKL.....SLQQQKSGR...
Nannozyma castellii ref |XP_003673005.1| ..TEES.VKEAVRYPKTKD.EEN.....SLLNQGSKL.....SLQQQKSGR...
Pachysolen tannophilus gb |ODV95269.1| ..TEES.VKEAVRYPKTKD.EEN.....SLLNQGSKL.....SLQQQKSGR...
Wickerhamomyces ciferrii ref |XP_011272307.1| ..TEES.VKEAVRYPKTKD.EEN.....SLLNQGSKL.....SIVQKN...
Lachancea danielsii emb |SCU96634.1| ..TEES.VKEAVRYPKTKD.EEN.....SLLNQGSKL.....SVLHQHSRO...
Lipomyces starkei gb |ODQ74338.1| ..TEES.VKEAVRYPKTKD.EEN.....SLLNQGSKL.....ASHRIV...
Saitoella complicata gb |GAO51702.1| ..TEES.VKEAVRYPKTKD.EEN.....SLLNQGSKL.....SKOPYNAL...
Torulaspora globosa ref |XP_037137900.1| ..TEES.VKEAVRYPKTKD.EEN.....SLLNQGSKL.....FARIPSAEHSNKVARP...
Ascoidea rubescens ref |XP_020048617.1| ..TEES.VKEAVRYPKTKD.EEN.....SLLNQGSKL.....SLQQQKSGR...
Ogataea philloendrii ref |XP_046063080.1| ..TEES.VKEAVRYPKTKD.EEN.....SLLNQGSKL.....SLQQQKSGR...
Lachancea nethofi emb |SCU3058.1| ..TEES.VKEAVRYPKTKD.EEN.....SLLNQGSKL.....SLQQQKSGR...
Eremothecium gossypii ref |NP_986230.1| ..TEES.VKEAVRYPKTKD.EEN.....SLLNQGSKL.....SLQQQKSGR...
Trichomonascus ciferrii gb |KAA8897105.1| ..TEES.VKEAVRYPKTKD.EEN.....SLLNQGSKL.....SLQQQKSGR...
Autographum hederace gb |KAF1990932.1| ..TEES.VKEAVRYPKTKD.EEN.....SLLNQGSKL.....SLQQQKSGR...
Lachancea lanzarotensis ref |XP_022630543.1| ..TEES.VKEAVRYPKTKD.EEN.....SLLNQGSKL.....SLQQQKSGR...
Cyberlindnera fabianii emb |COR47813.1| ..TEES.VKEAVRYPKTKD.EEN.....SLLNQGSKL.....SLQQQKSGR...
Wickerhamiella sorbophila ref |XP_024662504.1| ..TEES.VKEAVRYPKTKD.EEN.....SLLNQGSKL.....SLQQQKSGR...
Lophiostoma macrostomum gb |KAF2652156.1| ..TEES.VKEAVRYPKTKD.EEN.....SLLNQGSKL.....SLQQQKSGR...
Sphaerospora brunnea gb |KAA8892634.1| ..TEES.VKEAVRYPKTKD.EEN.....SLLNQGSKL.....SLQQQKSGR...
Romularia collo-cygni ref |XP_023631861.1| ..TEES.VKEAVRYPKTKD.EEN.....SLLNQGSKL.....SLQQQKSGR...
Eremomyces bilateralis ref |XP_033534262.1| ..TEES.VKEAVRYPKTKD.EEN.....SLLNQGSKL.....SLQQQKSGR...
Coleophoma crateriformis gb |RDW64025.1| ..TEES.VKEAVRYPKTKD.EEN.....SLLNQGSKL.....SLQQQKSGR...
Penicillium rolfsii gb |KAF3396381.1| ..TEES.VKEAVRYPKTKD.EEN.....SLLNQGSKL.....SLQQQKSGR...
Amorphotheca resinae ref |XP_024718197.1| ..TEES.VKEAVRYPKTKD.EEN.....SLLNQGSKL.....SLQQQKSGR...
Chalara longipes gb |KAF370763.1| ..TEES.VKEAVRYPKTKD.EEN.....SLLNQGSKL.....SLQQQKSGR...
Aspergillus terreus gb |KAG2412800.1| ..TEES.VKEAVRYPKTKD.EEN.....SLLNQGSKL.....SLQQQKSGR...
Aspergillus mulundensis ref |XP_026603423.1| ..TEES.VKEAVRYPKTKD.EEN.....SLLNQGSKL.....SLQQQKSGR...
Hyaloscypha variabilis gb |PMD46603.1| ..TEES.VKEAVRYPKTKD.EEN.....SLLNQGSKL.....SLQQQKSGR...
Talaromyces marneffei ref |XP_002145444.1| ..TEES.VKEAVRYPKTKD.EEN.....SLLNQGSKL.....SLQQQKSGR...
Aspergillus phoenicis gb |RDK39989.1| ..TEES.VKEAVRYPKTKD.EEN.....SLLNQGSKL.....SLQQQKSGR...
Aspergillus niger ref |XP_001398292.1| ..TEES.VKEAVRYPKTKD.EEN.....SLLNQGSKL.....SLQQQKSGR...
Trichodelia bispurula gb |KAF2400853.1| ..TEES.VKEAVRYPKTKD.EEN.....SLLNQGSKL.....SLQQQKSGR...

280 290

Candida albicans ref |XP_718283.1| ..TEES.VKEAVRYPKTKD.EEN.....SLLNQGSKL.....IN
Candida dubliniensis ref |XP_002421791.1| ..TEES.VKEAVRYPKTKD.EEN.....SLLNQGSKL.....VN
Candida tropicalis ref |XP_002546119.1| ..TEES.VKEAVRYPKTKD.EEN.....SLLNQGSKL.....VK
Candida orthoplosis ref |XP_003865973.1| ..TEES.VKEAVRYPKTKD.EEN.....SLLNQGSKL.....KLS
Candida parapsilosis ref |XP_036664758.1| ..TEES.VKEAVRYPKTKD.EEN.....SLLNQGSKL.....LQKS.SSINSLSPE
Candida maltosa gb |EMG48875.1| ..TEES.VKEAVRYPKTKD.EEN.....SLLNQGSKL.....DD.
Subomyces tanzavaensis ref |XP_020067300.1| ..TEES.VKEAVRYPKTKD.EEN.....SLLNQGSKL.....PKTQ
Candida metapsilosis gb |KAG5420916.1| ..TEES.VKEAVRYPKTKD.EEN.....SLLNQGSKL.....KLS
Candida subhashii gb |KAG7662799.1| ..TEES.VKEAVRYPKTKD.EEN.....SLLNQGSKL.....LQKS.SSINSLSPE
Scheffersomyces stipitis ref |XP_001383339.1| ..TEES.VKEAVRYPKTKD.EEN.....SLLNQGSKL.....NKIGSE
Yamadazyma tenuis ref |XP_006685252.1| ..TEES.VKEAVRYPKTKD.EEN.....SLLNQGSKL.....GVKN
Spathaspora passalidarum ref |XP_007374001.1| ..TEES.VKEAVRYPKTKD.EEN.....SLLNQGSKL.....KAAKPEFSNLSEE
Diutina rugosa gb |XP_034010932.1| ..TEES.VKEAVRYPKTKD.EEN.....SLLNQGSKL.....NQQP.AGASTAVTAA
Millerozyma farinosa emb |CCB85520.1| ..TEES.VKEAVRYPKTKD.EEN.....SLLNQGSKL.....SKDQ
Debaromyces fabryi ref |XP_015466149.1| ..TEES.VKEAVRYPKTKD.EEN.....SLLNQGSKL.....SVKS.NTQNGISEE
Debaromyces hansenii ref |XP_460331.1| ..TEES.VKEAVRYPKTKD.EEN.....SLLNQGSKL.....SVKA.NIEPKEISEE
Candida viswanathii gb |RCG59094.1| ..TEES.VKEAVRYPKTKD.EEN.....SLLNQGSKL.....KDE
Hyphopichia burtonii ref |XP_020074237.1| ..TEES.VKEAVRYPKTKD.EEN.....SLLNQGSKL.....NTDPKAYQKQ
Candida auris gb |PI551135.1| ..TEES.VKEAVRYPKTKD.EEN.....SLLNQGSKL.....EDQ
Clavispora lusitanae gb |KAF5210728.1| ..TEES.VKEAVRYPKTKD.EEN.....SLLNQGSKL.....Q
Scheffersomyces spartinae ref |XP_043049351.1| ..TEES.VKEAVRYPKTKD.EEN.....SLLNQGSKL.....SSSS
Zygosaccharomyces parabailli gb |AQ218953.1| ..TEES.VKEAVRYPKTKD.EEN.....SLLNQGSKL.....KKNFARIPSAEHSNKVARP...
Zygosaccharomyces bailii emb |JSM88098.1| ..TEES.VKEAVRYPKTKD.EEN.....SLLNQGSKL.....KKNFARIPSAEHSNKVARP...
Kluyveromyces marxianus gb |KAG0681669.1| ..TEES.VKEAVRYPKTKD.EEN.....SLLNQGSKL.....SLQQQKSGRLDAQT
Kluyveromyces lactis gb |QBU50244.1| ..TEES.VKEAVRYPKTKD.EEN.....SLLNQGSKL.....SLQQQKSGR...
Terfezia boudieri gb |RPB2791.1| ..TEES.VKEAVRYPKTKD.EEN.....SLLNQGSKL.....SLQQQKSGR...
Trimitana nivea gb |KAF8420454.1| ..TEES.VKEAVRYPKTKD.EEN.....SLLNQGSKL.....SLQQQKSGR...
Kalaharutuber pfeilii gb |KAF8471959.1| ..TEES.VKEAVRYPKTKD.EEN.....SLLNQGSKL.....SLQQQKSGR...
Terfezia clavervii gb |KAF8455951.1| ..TEES.VKEAVRYPKTKD.EEN.....SLLNQGSKL.....SLQQQKSGR...
Nannozyma castellii ref |XP_003673005.1| ..TEES.VKEAVRYPKTKD.EEN.....SLLNQGSKL.....SLQQQKSGR...
Pachysolen tannophilus gb |ODV95269.1| ..TEES.VKEAVRYPKTKD.EEN.....SLLNQGSKL.....SLQQQKSGR...
Wickerhamomyces ciferrii ref |XP_011272307.1| ..TEES.VKEAVRYPKTKD.EEN.....SLLNQGSKL.....SIVQKN...
Lachancea danielsii emb |SCU96634.1| ..TEES.VKEAVRYPKTKD.EEN.....SLLNQGSKL.....SVLHQHSRO...
Lipomyces starkei gb |ODQ74338.1| ..TEES.VKEAVRYPKTKD.EEN.....SLLNQGSKL.....ASHRIV...
Saitoella complicata gb |GAO51702.1| ..TEES.VKEAVRYPKTKD.EEN.....SLLNQGSKL.....SKOPYNAL...
Torulaspora globosa ref |XP_037137900.1| ..TEES.VKEAVRYPKTKD.EEN.....SLLNQGSKL.....FARIPSAEHSNKVARP...
Ascoidea rubescens ref |XP_020048617.1| ..TEES.VKEAVRYPKTKD.EEN.....SLLNQGSKL.....SLQQQKSGR...
Ogataea philloendrii ref |XP_046063080.1| ..TEES.VKEAVRYPKTKD.EEN.....SLLNQGSKL.....SLQQQKSGR...
Lachancea nethofi emb |SCU3058.1| ..TEES.VKEAVRYPKTKD.EEN.....SLLNQGSKL.....SLQQQKSGR...
Eremothecium gossypii ref |NP_986230.1| ..TEES.VKEAVRYPKTKD.EEN.....SLLNQGSKL.....SLQQQKSGR...
Trichomonascus ciferrii gb |KAA8897105.1| ..TEES.VKEAVRYPKTKD.EEN.....SLLNQGSKL.....SLQQQKSGR...
Autographum hederace gb |KAF1990932.1| ..TEES.VKEAVRYPKTKD.EEN.....SLLNQGSKL.....SLQQQKSGR...
Lachancea lanzarotensis ref |XP_022630543.1| ..TEES.VKEAVRYPKTKD.EEN.....SLLNQGSKL.....SLQQQKSGR...
Cyberlindnera fabianii emb |COR47813.1| ..TEES.VKEAVRYPKTKD.EEN.....SLLNQGSKL.....SLQQQKSGR...
Wickerhamiella sorbophila ref |XP_024662504.1| ..TEES.VKEAVRYPKTKD.EEN.....SLLNQGSKL.....SLQQQKSGR...
Lophiostoma macrostomum gb |KAF2652156.1| ..TEES.VKEAVRYPKTKD.EEN.....SLLNQGSKL.....SLQQQKSGR...
Sphaerospora brunnea gb |KAA8892634.1| ..TEES.VKEAVRYPKTKD.EEN.....SLLNQGSKL.....SLQQQKSGR...
Romularia collo-cygni ref |XP_023631861.1| ..TEES.VKEAVRYPKTKD.EEN.....SLLNQGSKL.....SLQQQKSGR...
Eremomyces bilateralis ref |XP_033534262.1| ..TEES.VKEAVRYPKTKD.EEN.....SLLNQGSKL.....SLQQQKSGR...
Coleophoma crateriformis gb |RDW64025.1| ..TEES.VKEAVRYPKTKD.EEN.....SLLNQGSKL.....SLQQQKSGR...
Penicillium rolfsii gb |KAF3396381.1| ..TEES.VKEAVRYPKTKD.EEN.....SLLNQGSKL.....SLQQQKSGR...
Amorphotheca resinae ref |XP_024718197.1| ..TEES.VKEAVRYPKTKD.EEN.....SLLNQGSKL.....SLQQQKSGR...
Chalara longipes gb |KAF370763.1| ..TEES.VKEAVRYPKTKD.EEN.....SLLNQGSKL.....SLQQQKSGR...
Aspergillus terreus gb |KAG2412800.1| ..TEES.VKEAVRYPKTKD.EEN.....SLLNQGSKL.....SLQQQKSGR...
Aspergillus mulundensis ref |XP_026603423.1| ..TEES.VKEAVRYPKTKD.EEN.....SLLNQGSKL.....SLQQQKSGR...
Hyaloscypha variabilis gb |PMD46603.1| ..TEES.VKEAVRYPKTKD.EEN.....SLLNQGSKL.....SLQQQKSGR...
Talaromyces marneffei ref |XP_002145444.1| ..TEES.VKEAVRYPKTKD.EEN.....SLLNQGSKL.....SLQQQKSGR...
Aspergillus phoenicis gb |RDK39989.1| ..TEES.VKEAVRYPKTKD.EEN.....SLLNQGSKL.....SLQQQKSGR...
Aspergillus niger ref |XP_001398292.1| ..TEES.VKEAVRYPKTKD.EEN.....SLLNQGSKL.....SLQQQKSGR...
Trichodelia bispurula gb |KAF2400853.1| ..TEES.VKEAVRYPKTKD.EEN.....SLLNQGSKL.....SLQQQKSGR...

5

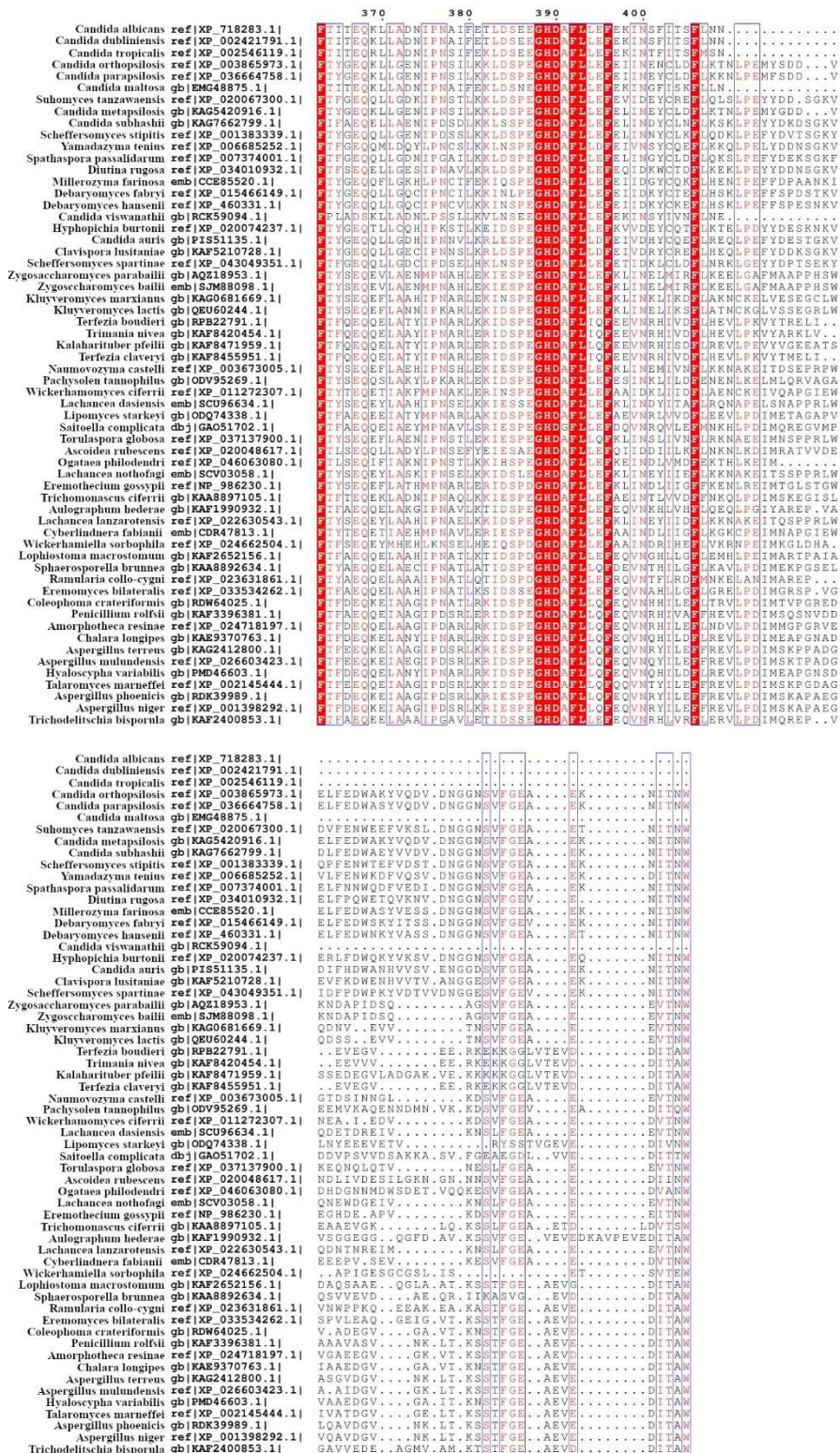


Figure S1. The multiple sequence alignment of amino acid sequences from 60 microorganisms from the Ascomycota group to the C. albicans Met2 amino acid sequence from C. albicans. Analysis performed using BLAST program [1].

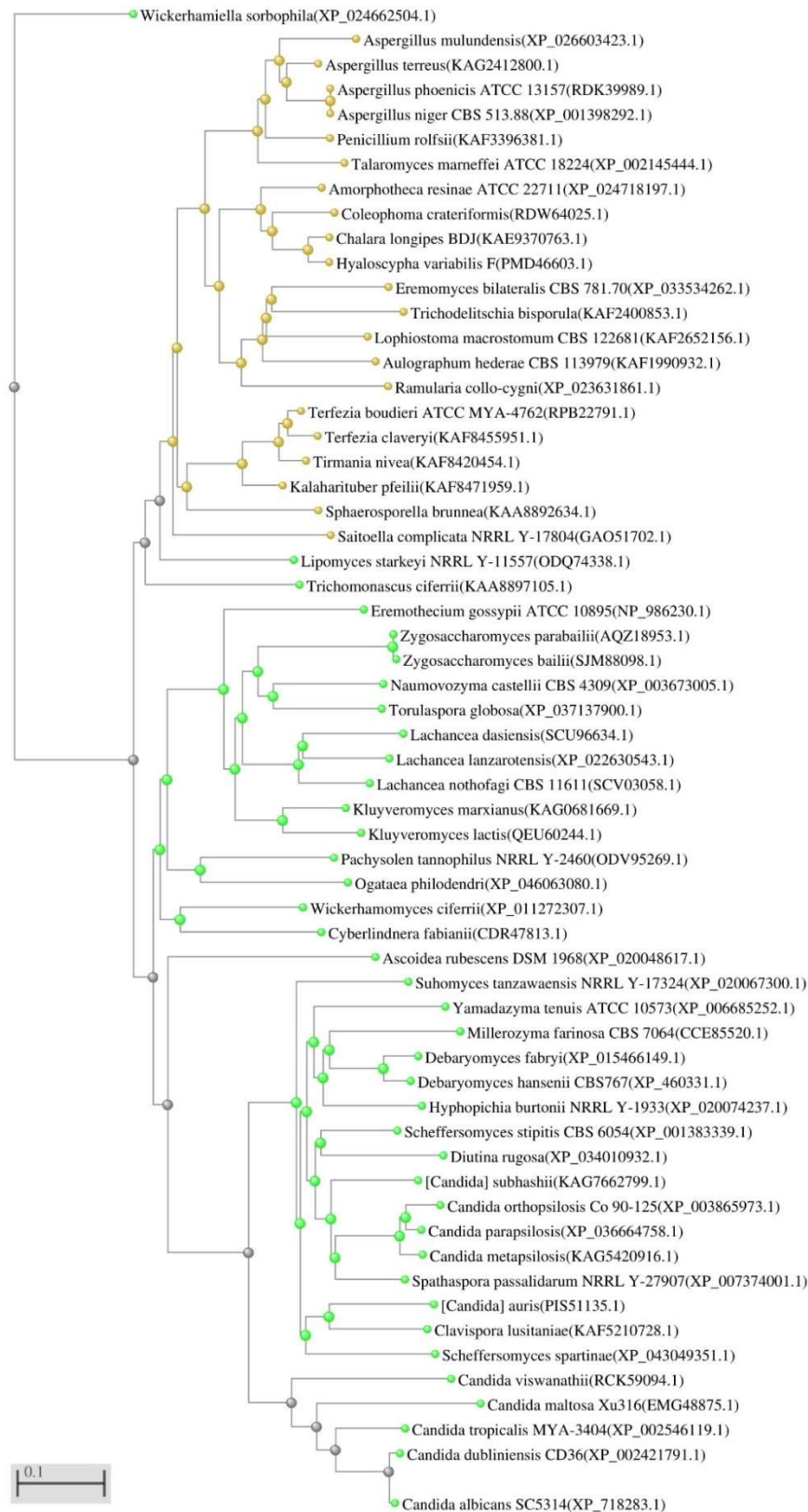


Figure S2. Phylogenetic tree of amino acid sequences from 60 microorganisms from the Ascomycota group with high similarity (≥ 50.34 % of identity) to the Met2 amino acid sequence from *C. albicans*. Analysis performed using BLAST program [1].

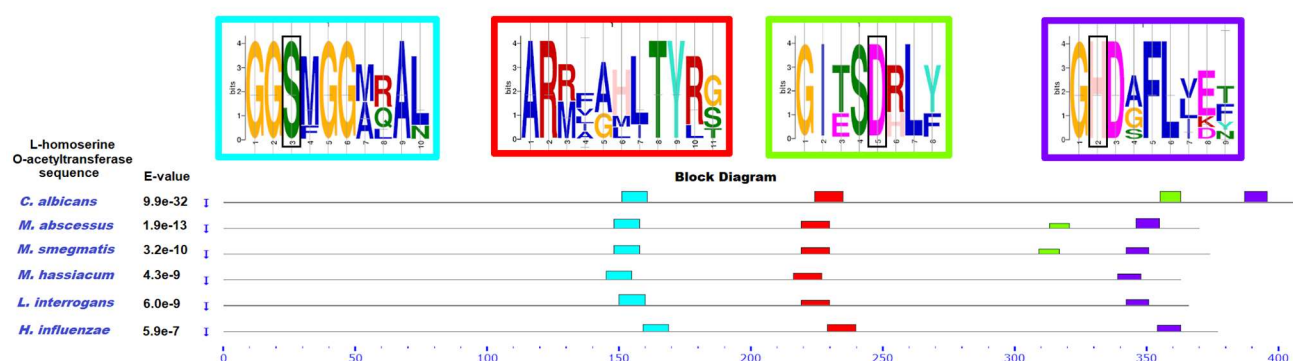
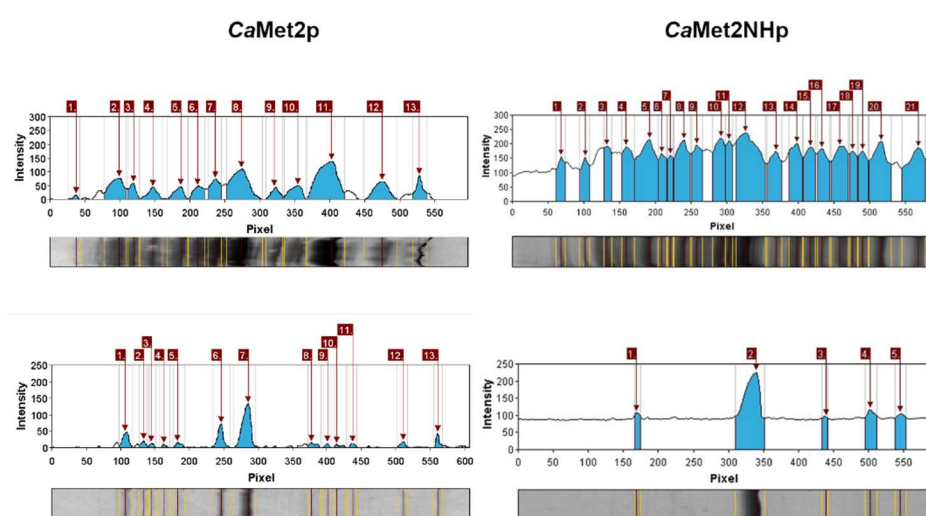


Figure S3. Conservation of characteristic amino acid motifs in L-homoserine O-acetyltransferase sequences. The catalytic triad residues are marked with a black frame. The analysis was performed using MAST , FIMO and TOMTOM tools from The MEME suite [2-4].



(a)

Protein name	CaMet2p	CaMet2NHp
Total amount of protein in cell extract	100 %	100%
Rate of protein expression	23 %	19 %
Volume of purified protein	10 mL	10 mL
Concentration of recombinant protein	0.114 mg mL ⁻¹	0.237 mg mL ⁻¹
Purity of recombinant protein	44 %	86 %

(b)

Protein name	CaMet2p	CaMet2NHp
Theoretical molecular mass	45.4 kDa	46.2 kDa
Calculated molecular mass after SDS-PAGE analysis	45.0 kDa	46.6 kDa

(c)

Figure S4. Overproduction of *CaMet2p* and *CaMet2NHp* in *E. coli* cells: (a) Densitometric analysis of SDS-PAGE electrophoresis analysis of cell extract (top) and purified fraction (bottom) from *E. coli* cells producing *CaMet2p* and *CaMet2NHp* recombinant protein. Gel Analyzer software [5]; (b) Mass balance of *CaMet2p* and *CaMet2NHp* purification developed on the base of the Gel Analyzer Program analysis results and experimental work; (c) Theoretical molecular mass (ProtParam analysis [6]) and determined by SDS-PAGE analysis molecular mass of the *CaMet2p* and *CaMet2NHp*.

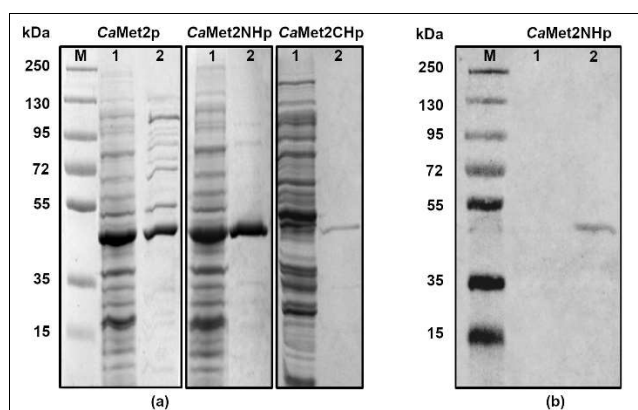


Figure S5. (a) SDS-PAGE analysis of CaMet2p, CaMet2NHp and CaMet2CHp overproduction in *E. coli* cells and purification. Plus Prestained Protein Ladder (M), cell-free extract (1), CaMet2p-containing fraction (2) (b) Western blot analysis of CaMet2NHp overproduction. (1) no IPTG induction, (2) IPTG induced.

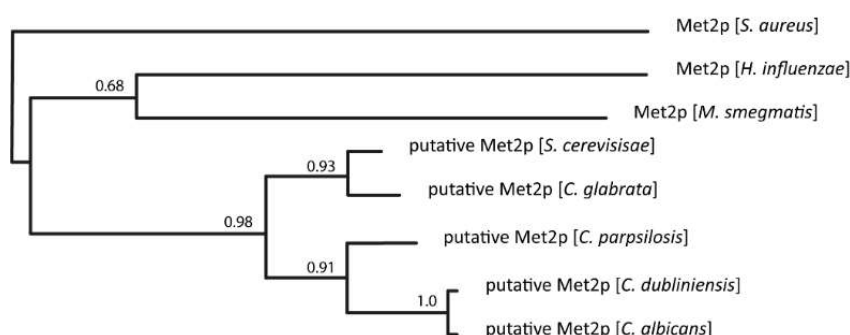


Figure S6. Phylogenetic tree of Met2p from various organisms. Analysis performed using BLAST program [1].

References

1. Altschul, S.F.; Gish, W.; Miller, W.; Myers, E.W.; Lipman, D.J. Basic local alignment search tool. *J. Mol. Biol.* **1990**, *215*, 403–410, doi:10.1016/S0022-2836(05)80360-2.
2. Bailey, T.L.; Gribskov, M. Combining evidence using p-values: Application to sequence homology searches. *Bioinformatics* **1998**, *14*, 48–54, doi:10.1093/bioinformatics/14.1.48.
3. Gupta, S.; Stamatoyannopoulos, J.A.; Bailey, T.L.; Noble, W. Quantifying similarity between motifs. *Genome Biol.* **2007**, *8*, R24, doi:10.1186/gb-2007-8-2-r24.
4. Grant, C.E.; Bailey, T.L.; Noble, W.S. FIMO: scanning for occurrences of a given motif. *Bioinformatics* **2011**, *27*, 1017–1018, doi:10.1093/bioinformatics/btr064.
5. Lazar Jr., I.; Lazar Sr., I. GelAnalyzer 19.1 (www.gelanalyzer.com).
6. Gasteiger, E.; Hoogland, C.; Gattiker, A.; Duvaud, S.; Wilkins, M.R.; Appel, R.D.; Bairoch, A. Protein Identification and Analysis Tools on the ExPASy Server. In *The Proteomics Protocols Handbook*; Humana Press, 2005; pp. 571–607.